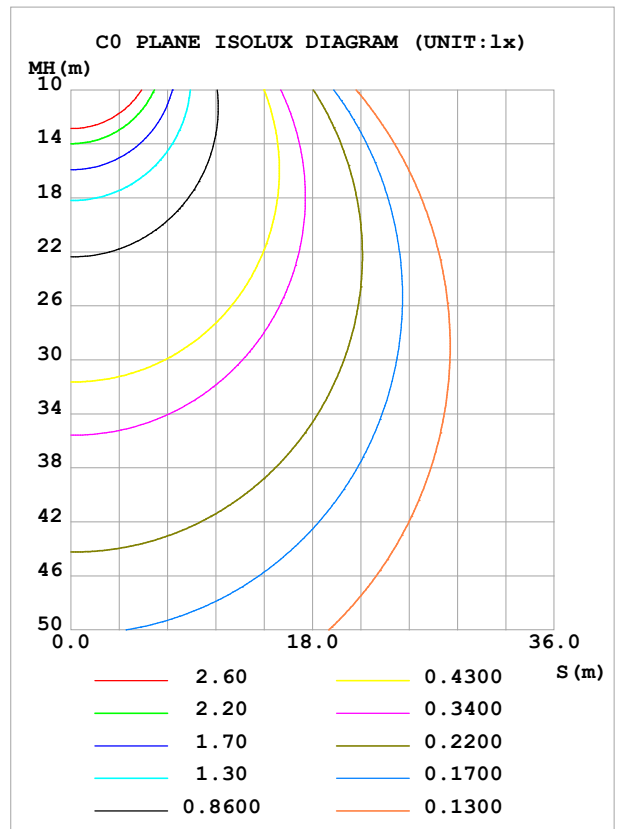
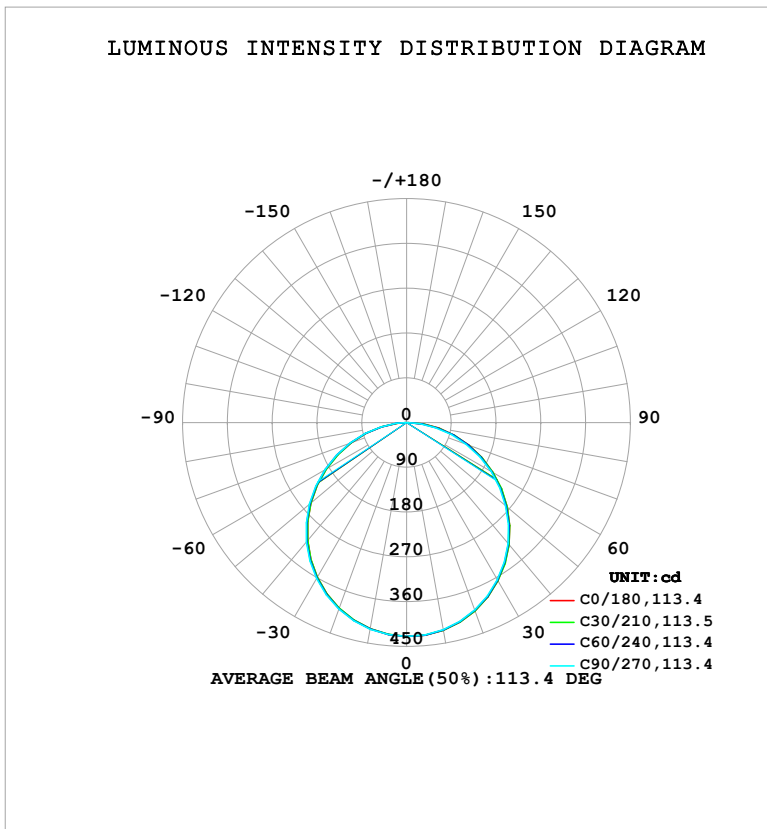


LUMINAIRE PHOTOMETRIC TEST REPORT

Test:U:120.67V I:0.2195A P:24.322W PF:0.9181 Freq:60.00Hz Lamp Flux:1253.99x1 lm		
NAME: 208081eddc	TYPE:	WEIGHT:
SPEC.:	DIM.:	SERIAL No.: 1#-35K
MFR.: EVERFINE	SUR.: 0.258	Shielding Angle:

DATA OF LAMP		PHOTOMETRIC DATA				Eff: 51.56 lm/W
MODEL: E912-K248-X120B5T-W1-35K		I _{max} (cd)	430.1	S/MH (C0/180)	1.24	
NOMINAL POWER (W)	24	LOR (%)	100.0	S/MH (C90/270)	1.25	
RATED VOLTAGE (V)	120	TOTAL FLUX (lm)	1254.0	η UP, DN (C0-180)	0.0, 50.5	
NOMINAL FLUX (lm)	1253.99	CIE CLASS	DIRECT	η UP, DN (C180-360)	0.0, 49.5	
LAMPS INSIDE	1	η up (%)	0.0	CIBSE SHR NOM	1.25	
TEST VOLTAGE (V)	120	η down (%)	100.0	CIBSE SHR MAX	1.35	



C Range: 0 - 360DEG
C Interval: 30.0DEG
Test Speed: HIGH
Temperature: 25.3 °C
Operators: DAMIN
Test Date: 2025-08-18

γ Range: 0 - 90DEG
γ Interval: 5.0DEG
Test System: EVERFINE GO-2000B_V1 SYSTEM V2.00.488
Humidity: 65.0%
Test Distance: 6.144m [K=1.0000]
Remarks:

ZONAL FLUX DIAGRAM

ZONAL FLUX DIAGRAM:

γ	C0	C45	C90	C135	C180	C225	C270	C315	γ	Φ zone	Φ total	%lum, lamp
10	423.9	423.5	422.7	421.5	421.0	421.1	421.7	423.3	0- 10	40.68	40.68	3.24,3.24
20	402.5	401.9	400.9	398.3	397.1	397.5	398.6	401.6	10- 20	116.5	157.2	12.5,12.5
30	367.2	366.6	365.1	361.2	359.3	360.1	362.1	366.1	20- 30	176.6	333.8	26.6,26.6
40	320.3	319.6	317.4	312.4	310.0	310.8	313.3	318.5	30- 40	213.2	547.0	43.6,43.6
50	263.7	262.9	260.1	254.2	251.6	252.4	255.1	261.4	40- 50	221.8	768.8	61.3,61.3
60	200.4	199.5	196.1	189.3	186.5	187.3	190.0	196.7	50- 60	202.1	970.9	77.4,77.4
70	133.2	132.3	127.9	120.9	118.5	119.1	121.2	126.8	60- 70	157.7	1129	90,90
80	66.38	64.96	59.26	52.55	50.85	51.81	52.89	58.05	70- 80	95.90	1224	97.6,97.6
90	3.599	2.500	0.8597	0.8333	0.9636	0.9465	0.9236	2.035	80- 90	29.51	1254	100,100
100									90-100			
110									100-110			
120									110-120			
130									120-130			
140									130-140			
150									140-150			
160									150-160			
170									160-170			
180									170-180			
DEG	LUMINOUS INTENSITY:cd									UNIT:lm		

Conical surface Flux(90deg): 658.61 lm

%lum = 52.5%

%lamp = 52.5%

Conical surface Flux(130deg): 1056.6 lm

%lum = 84.3%

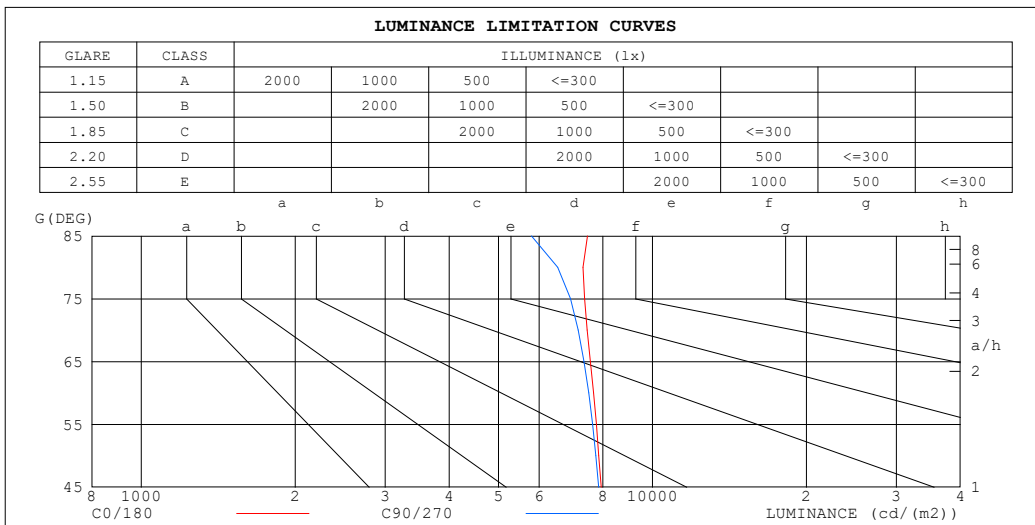
%lamp = 84.3%

C Range: 0 - 360DEG
 C Interval: 30.0DEG
 Test Speed: HIGH
 Temperature:25.3°C
 Operators:DAMIN
 Test Date:2025-08-18

γ Range: 0 - 90DEG
 γ Interval: 5.0DEG
 Test System:EVERFINE GO-2000B_V1 SYSTEM V2.00.488
 Humidity:65.0%
 Test Distance:6.144m [K=1.0000]
 Remarks:

LUMINANCE LIMITATION CURVES

Test:U:120.67V I:0.2195A P:24.322W PF:0.9181 Freq:60.00Hz Lamp Flux:1253.99x1 lm		
NAME: 208081eddc	TYPE:	WEIGHT:
SPEC.:	DIM.:	SERIAL No.: 1#-35K
MFR.: EVERFINE	SUR.: 0.258	Shielding Angle:



LUMINANCE cd/(m2)		
G (DEG)	C0/180	C90/270
85	7461	5796
80	7314	6529
75	7365	6911
70	7454	7154
65	7560	7342
60	7667	7503
55	7763	7634
50	7850	7744
45	7934	7842

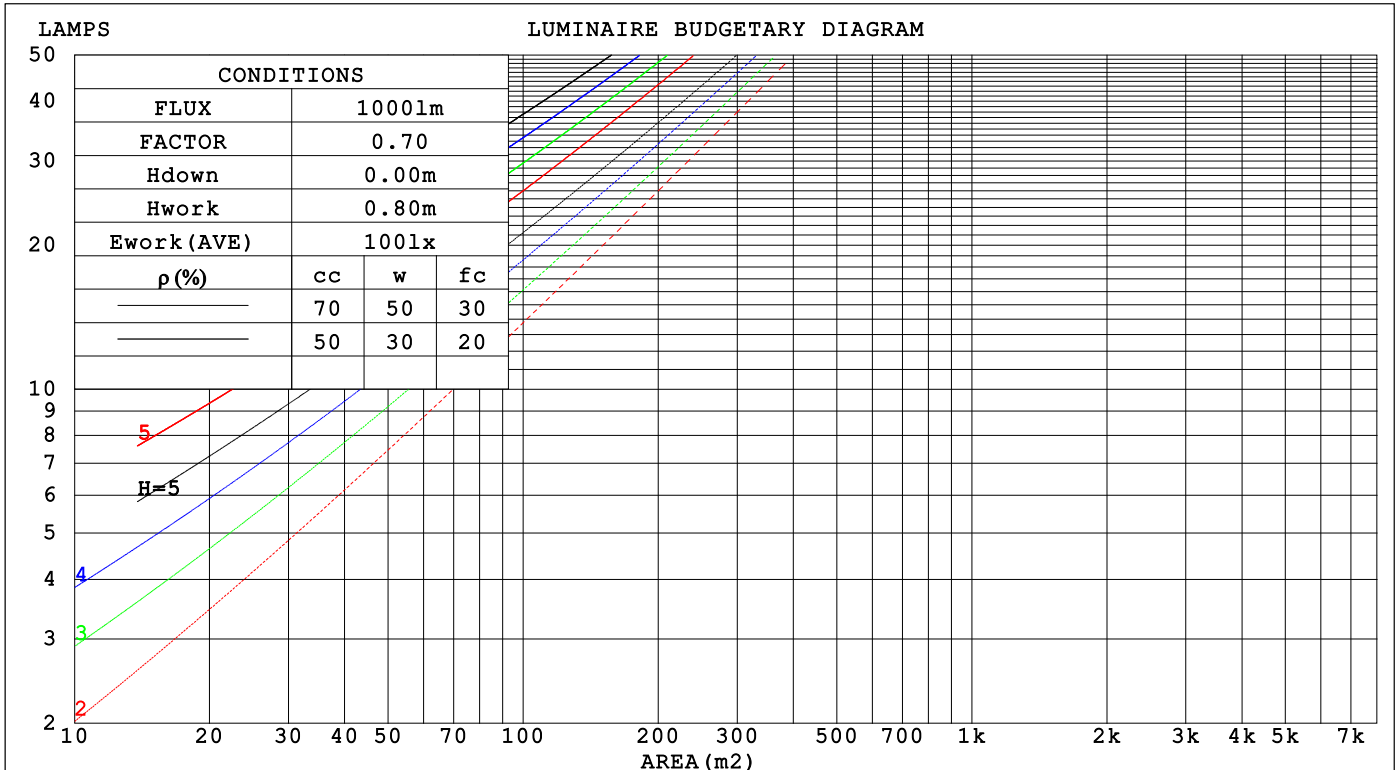
C Range: 0 - 360DEG
 C Interval: 30.0DEG
 Test Speed: HIGH
 Temperature:25.3 °C
 Operators:DAMIN
 Test Date:2025-08-18

γ Range: 0 - 90DEG
 γ Interval: 5.0DEG
 Test System:EVERFINE GO-2000B_V1 SYSTEM V2.00.488
 Humidity:65.0%
 Test Distance:6.144m [K=1.0000]
 Remarks:

CU AND LUMINAIRE BUDGETARY ESTIMATE DIAGRAM

Test:U:120.67V I:0.2195A P:24.322W PF:0.9181 Freq:60.00Hz Lamp Flux:1253.99x1 lm		
NAME: 208081eddc	TYPE:	WEIGHT:
SPEC.:	DIM.:	SERIAL No.: 1#-35K
MFR.: EVERFINE	SUR.: 0.258	Shielding Angle:

pcc	80%			70%			50%			30%			10%			0
pw	50%	30%	10%	50%	30%	10%	50%	30%	10%	50%	30%	10%	50%	30%	10%	0
pfc	20%			20%			20%			20%			20%			0
RCR	RCR:Room Cavity Ratio															
	Coefficients of Utilization(CU)															
0.0	1.19	1.19	1.19	1.16	1.16	1.16	1.11	1.11	1.11	1.06	1.06	1.06	1.02	1.02	1.02	.00
1.0	1.03	.99	.95	1.01	.97	.93	.97	.94	.90	.93	.90	.88	.89	.87	.85	.83
2.0	.90	.83	.77	.88	.81	.76	.84	.79	.74	.81	.76	.72	.78	.74	.71	.69
3.0	.79	.70	.64	.77	.69	.63	.74	.67	.62	.71	.66	.61	.69	.64	.60	.58
4.0	.70	.61	.54	.68	.60	.53	.66	.58	.53	.63	.57	.52	.61	.56	.51	.49
5.0	.62	.53	.46	.61	.52	.46	.59	.51	.45	.57	.50	.45	.55	.49	.44	.42
6.0	.56	.47	.40	.55	.46	.40	.53	.45	.40	.51	.45	.39	.50	.44	.39	.37
7.0	.51	.42	.36	.50	.41	.35	.48	.41	.35	.47	.40	.35	.45	.39	.35	.33
8.0	.46	.38	.32	.45	.37	.32	.44	.37	.31	.43	.36	.31	.42	.36	.31	.29
9.0	.42	.34	.28	.42	.34	.28	.41	.33	.28	.40	.33	.28	.38	.32	.28	.26
10.0	.39	.31	.26	.39	.31	.26	.38	.30	.26	.37	.30	.25	.36	.30	.25	.24



C Range: 0 - 360DEG
 C Interval: 30.0DEG
 Test Speed: HIGH
 Temperature:25.3 °C
 Operators:DAMIN
 Test Date:2025-08-18

γ Range: 0 - 90DEG
 γ Interval: 5.0DEG
 Test System:EVERFINE GO-2000B_V1 SYSTEM V2.00.488
 Humidity:65.0%
 Test Distance:6.144m [K=1.0000]
 Remarks:

WEC AND CCEC

Test:U:120.67V I:0.2195A P:24.322W PF:0.9181 Freq:60.00Hz Lamp Flux:1253.99x1 lm		
NAME: 208081eddc	TYPE:	WEIGHT:
SPEC.:	DIM.:	SERIAL No.: 1#-35K
MFR.: EVERFINE	SUR.: 0.258	Shielding Angle:

ρ_{CC}	80%			70%			50%			30%			10%			0
ρ_w	50%	30%	10%	50%	30%	10%	50%	30%	10%	50%	30%	10%	50%	30%	10%	0
ρ_{fc}	20%			20%			20%			20%			20%			0
RCR	RCR:Room Cavity Ratio						Wall Exitance Coefficients(WEC)									
0.0																
1.0	.319	.181	.057	.312	.178	.056	.298	.171	.055	.286	.165	.053	.275	.159	.051	
2.0	.298	.163	.050	.291	.160	.049	.280	.155	.048	.269	.151	.047	.259	.146	.046	
3.0	.274	.146	.044	.269	.144	.043	.258	.140	.043	.249	.136	.042	.240	.133	.041	
4.0	.252	.131	.039	.247	.130	.038	.238	.126	.038	.230	.123	.037	.222	.120	.037	
5.0	.233	.119	.034	.228	.117	.034	.220	.115	.034	.213	.112	.033	.206	.110	.033	
6.0	.216	.108	.031	.212	.107	.031	.204	.105	.030	.198	.103	.030	.191	.101	.030	
7.0	.200	.099	.028	.197	.098	.028	.190	.096	.028	.184	.095	.028	.179	.093	.027	
8.0	.187	.091	.026	.184	.091	.026	.178	.089	.025	.173	.087	.025	.167	.086	.025	
9.0	.175	.085	.024	.172	.084	.024	.167	.083	.023	.162	.081	.023	.158	.080	.023	
10.0	.165	.079	.022	.162	.078	.022	.157	.077	.022	.153	.076	.022	.149	.075	.021	

ρ_{CC}	80%			70%			50%			30%			10%			0
ρ_w	50%	30%	10%	50%	30%	10%	50%	30%	10%	50%	30%	10%	50%	30%	10%	0
ρ_{fc}	20%			20%			20%			20%			20%			0
RCR	RCR:Room Cavity Ratio						Ceiling Cavity Exitance Coefficients(CCEC)									
0.0	.190	.190	.190	.163	.163	.163	.111	.111	.111	.064	.064	.064	.020	.020	.020	
1.0	.181	.156	.134	.155	.134	.115	.106	.092	.080	.061	.053	.046	.020	.017	.015	
2.0	.173	.132	.097	.148	.114	.084	.102	.079	.059	.059	.046	.034	.019	.015	.011	
3.0	.165	.114	.074	.142	.099	.064	.097	.069	.045	.056	.040	.026	.018	.013	.009	
4.0	.158	.101	.058	.135	.087	.050	.093	.061	.035	.054	.036	.021	.017	.012	.007	
5.0	.150	.091	.047	.129	.078	.041	.089	.055	.029	.051	.032	.017	.017	.011	.006	
6.0	.143	.082	.039	.123	.071	.034	.085	.050	.024	.049	.029	.014	.016	.010	.005	
7.0	.136	.075	.033	.117	.065	.029	.081	.046	.020	.047	.027	.012	.015	.009	.004	
8.0	.129	.070	.029	.111	.060	.025	.077	.042	.018	.045	.025	.011	.015	.008	.003	
9.0	.123	.065	.025	.106	.056	.022	.074	.039	.016	.043	.023	.009	.014	.008	.003	
10.0	.118	.060	.022	.101	.052	.019	.070	.037	.014	.041	.022	.008	.013	.007	.003	

C Range: 0 - 360DEG
 C Interval: 30.0DEG
 Test Speed: HIGH
 Temperature:25.3 °C
 Operators:DAMIN
 Test Date:2025-08-18

γ Range: 0 - 90DEG
 γ Interval: 5.0DEG
 Test System:EVERFINE GO-2000B_V1 SYSTEM V2.00.488
 Humidity:65.0%
 Test Distance:6.144m [K=1.0000]
 Remarks:

UGR(Unified Glare Rating) Table

Test:U:120.67V I:0.2195A P:24.322W PF:0.9181 Freq:60.00Hz Lamp Flux:1253.99x1 lm		
NAME: 208081eddc	TYPE:	WEIGHT:
SPEC.:	DIM.:	SERIAL No.: 1#-35K
MFR.: EVERFINE	SUR.: 0.258	Shielding Angle:

ceiling/cavity	0.7	0.7	0.5	0.5	0.3	0.7	0.7	0.5	0.5	0.3
walls	0.5	0.3	0.5	0.3	0.3	0.5	0.3	0.5	0.3	0.3
working plane	0.2	0.2	0.2	0.2	0.2	0.2	0.2	0.2	0.2	0.2

Room dimensions	Viewed crosswise					Viewed endwise				
x = 2H y = 2H	19.3	20.9	19.6	21.1	21.3	19.2	20.8	19.5	21.0	21.2
3H	21.0	22.5	21.3	22.7	22.9	20.9	22.3	21.2	22.5	22.8
4H	21.8	23.1	22.1	23.4	23.6	21.6	22.9	21.9	23.2	23.4
6H	22.4	23.7	22.7	23.9	24.2	22.1	23.4	22.4	23.7	23.9
8H	22.6	23.8	22.9	24.1	24.4	22.2	23.5	22.6	23.8	24.1
12H	22.8	23.9	23.1	24.2	24.5	22.3	23.5	22.7	23.8	24.1
4H 2H	20.0	21.3	20.3	21.6	21.9	19.9	21.3	20.2	21.5	21.8
3H	21.9	23.1	22.2	23.4	23.7	21.8	22.9	22.1	23.2	23.5
4H	22.8	23.9	23.1	24.2	24.5	22.6	23.7	23.0	24.0	24.3
6H	23.5	24.5	23.9	24.8	25.2	23.2	24.2	23.6	24.6	24.9
8H	23.8	24.7	24.2	25.1	25.5	23.5	24.4	23.9	24.7	25.1
12H	24.0	24.9	24.5	25.2	25.6	23.6	24.4	24.0	24.8	25.2
8H 4H	23.1	24.0	23.5	24.4	24.7	22.9	23.8	23.3	24.2	24.6
6H	24.0	24.8	24.5	25.2	25.6	23.8	24.5	24.2	24.9	25.4
8H	24.4	25.1	24.9	25.5	26.0	24.1	24.7	24.5	25.2	25.6
12H	24.7	25.3	25.2	25.8	26.2	24.3	24.9	24.8	25.3	25.8
12H 4H	23.1	23.9	23.5	24.3	24.7	23.0	23.8	23.4	24.2	24.6
6H	24.1	24.8	24.6	25.2	25.7	23.9	24.5	24.3	25.0	25.4
8H	24.6	25.1	25.0	25.6	26.1	24.2	24.8	24.7	25.3	25.7

Variations with the observer position at spacings(CIE Pub.117):		
S = 1.0H	+ 0.1 / - 0.2	+ 0.1 / - 0.2
1.5H	+ 0.2 / - 0.3	+ 0.2 / - 0.3
2.0H	+ 0.1 / - 0.3	+ 0.1 / - 0.3

CIE Pub.117, 1254 lm Total Lamp Luminous Flux Correct (8log(F/F0) = 0.8)
Area: 0.0523 m2

C Range: 0 - 360DEG
C Interval: 30.0DEG
Test Speed: HIGH
Temperature:25.3°C
Operators:DAMIN
Test Date:2025-08-18

γ Range: 0 - 90DEG
γ Interval: 5.0DEG
Test System:EVERFINE GO-2000B_V1 SYSTEM V2.00.488
Humidity:65.0%
Test Distance:6.144m [K=1.0000]
Remarks:

UTILIZATION FACTORS TABLE

Test:U:120.67V I:0.2195A P:24.322W PF:0.9181 Freq:60.00Hz Lamp Flux:1253.99x1 lm		
NAME: 208081eddc	TYPE:	WEIGHT:
SPEC.:	DIM.:	SERIAL No.: 1#-35K
MFR.: EVERFINE	SUR.: 0.258	Shielding Angle:

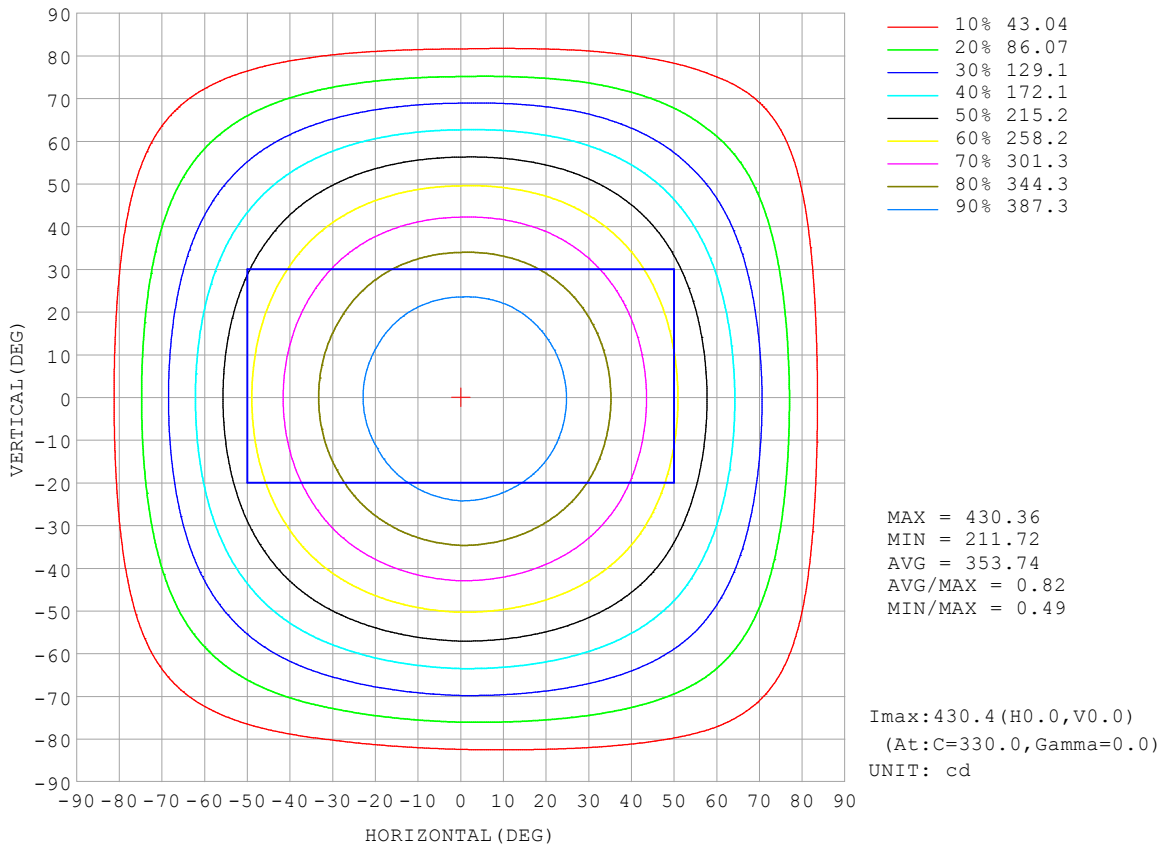
REFLECTANCE										
Ceiling	0.8	0.8	0.8	0.7	0.7	0.7	0.5	0.5	0.5	0
Walls	0.7	0.5	0.3	0.7	0.5	0.3	0.7	0.5	0.3	0
Working plane	0.2	0.2	0.2	0.2	0.2	0.2	0.2	0.2	0.2	0
ROOM INDEX	UTILIZATION FACTORS (PERCENT) $k(RI) \times RCR = 5$									
k = 0.60	57	45	38	56	45	38	55	45	38	31
0.80	67	55	48	66	55	48	64	54	47	40
1.00	75	64	57	74	63	56	72	65	56	49
1.25	82	72	64	81	71	64	78	70	63	56
1.50	87	77	70	86	76	70	83	75	69	61
2.00	94	86	79	93	84	78	89	82	77	69
2.50	98	90	84	96	89	83	92	86	81	73
3.00	102	95	89	100	93	88	95	90	86	77
4.00	106	100	95	103	98	94	99	95	91	82
5.00	108	103	99	106	101	98	101	98	95	85
ROOM INDEX	UF(total)									Direct
According to DIN EN 13032-2 2004			Suspended				SHRNOM = 1.25			

C Range: 0 - 360DEG
 C Interval: 30.0DEG
 Test Speed: HIGH
 Temperature:25.3 °C
 Operators:DAMIN
 Test Date:2025-08-18

γ Range: 0 - 90DEG
 γ Interval: 5.0DEG
 Test System:EVERFINE GO-2000B_V1 SYSTEM V2.00.488
 Humidity:65.0%
 Test Distance:6.144m [K=1.0000]
 Remarks:

ISOCANDELA DIAGRAM

Test:U:120.67V I:0.2195A P:24.322W PF:0.9181 Freq:60.00Hz Lamp Flux:1253.99x1 lm		
NAME: 208081eddc	TYPE:	WEIGHT:
SPEC.:	DIM.:	SERIAL No.: 1#-35K
MFR.: EVERFINE	SUR.: 0.258	Shielding Angle:



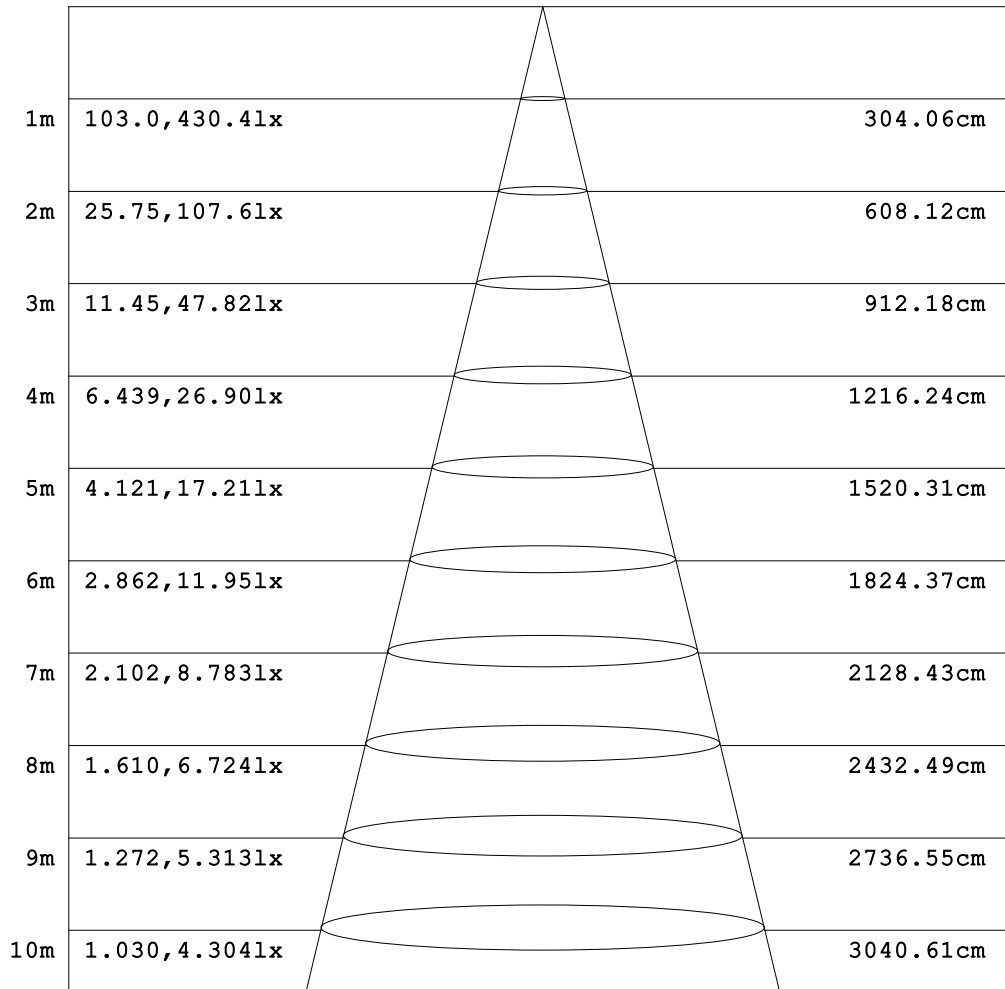
C Range: 0 - 360DEG
 C Interval: 30.0DEG
 Test Speed: HIGH
 Temperature: 25.3 °C
 Operators: DAMIN
 Test Date: 2025-08-18

γ Range: 0 - 90DEG
 γ Interval: 5.0DEG
 Test System: EVERFINE GO-2000B_V1 SYSTEM V2.00.488
 Humidity: 65.0%
 Test Distance: 6.144m [K=1.0000]
 Remarks:

AAI Figure

Test:U:120.67V I:0.2195A P:24.322W PF:0.9181 Freq:60.00Hz Lamp Flux:1253.99x1 lm		
NAME: 208081eddc	TYPE:	WEIGHT:
SPEC.:	DIM.:	SERIAL No.: 1#-35K
MFR.: EVERFINE	SUR.: 0.258	Shielding Angle:

Flux out:970.9 lm



Angle:113.33deg

Height

Eavg, Emax

Diameter

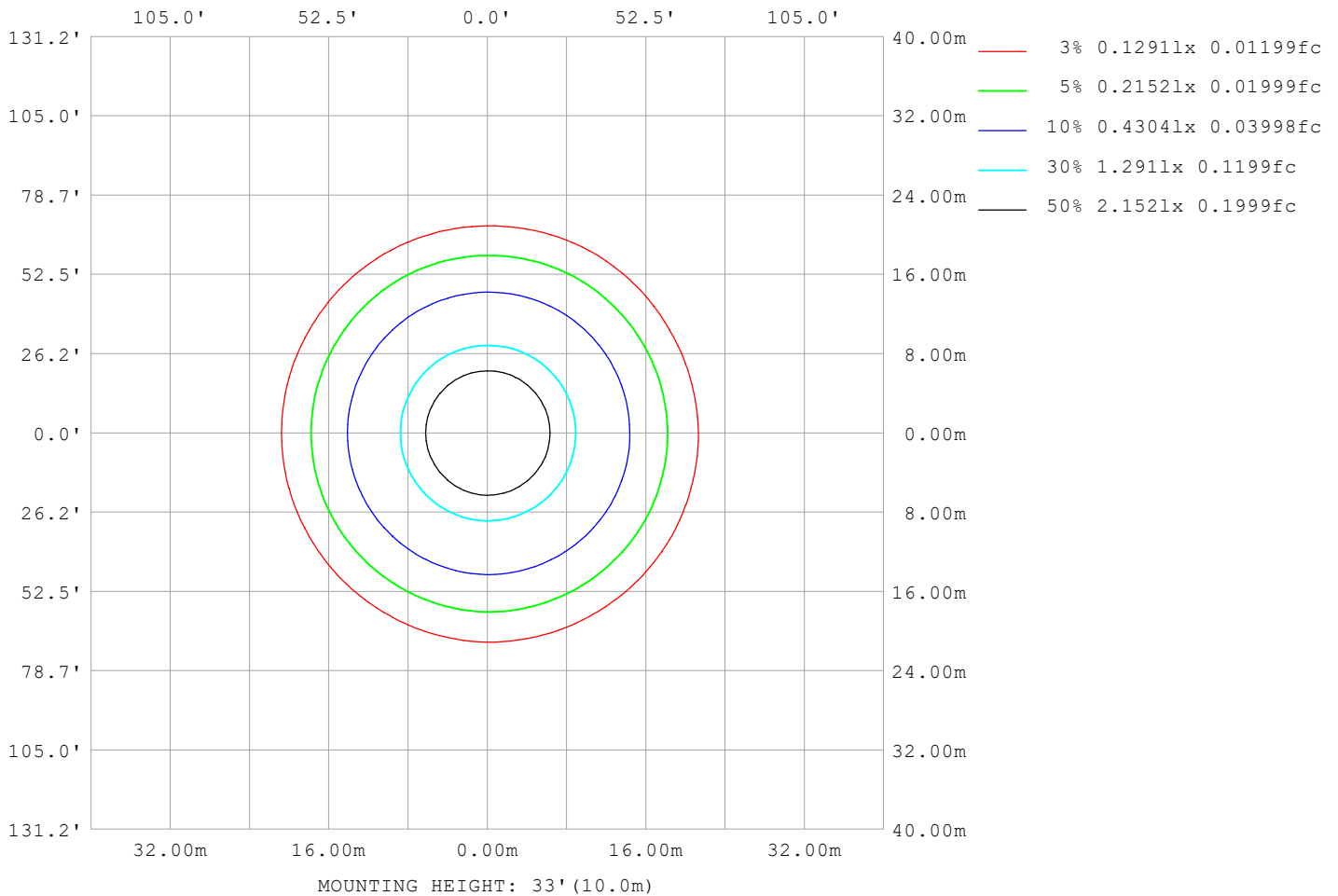
Note:The Curves indicate the illuminated area and the average illumination when the luminaire is at different distance.

C Range: 0 - 360DEG
C Interval: 30.0DEG
Test Speed: HIGH
Temperature:25.3 °C
Operators:DAMIN
Test Date:2025-08-18

γ Range: 0 - 90DEG
γ Interval: 5.0DEG
Test System:EVERFINE GO-2000B_V1 SYSTEM V2.00.488
Humidity:65.0%
Test Distance:6.144m [K=1.0000]
Remarks:

ISOLUX DIAGRAM

Test:U:120.67V I:0.2195A P:24.322W PF:0.9181 Freq:60.00Hz Lamp Flux:1253.99x1 lm		
NAME: 208081eddc	TYPE:	WEIGHT:
SPEC.:	DIM.:	SERIAL No.: 1#-35K
MFR.: EVERFINE	SUR.: 0.258	Shielding Angle:



C Range: 0 - 360DEG
 C Interval: 30.0DEG
 Test Speed: HIGH
 Temperature:25.3°C
 Operators:DAMIN
 Test Date:2025-08-18

γ Range: 0 - 90DEG
 γ Interval: 5.0DEG
 Test System:EVERFINE GO-2000B_V1 SYSTEM V2.00.488
 Humidity:65.0%
 Test Distance:6.144m [K=1.0000]
 Remarks:

LED Avg.L Report

Test:U:120.67V I:0.2195A P:24.322W PF:0.9181 Freq:60.00Hz Lamp Flux:1253.99x1 lm		
NAME: 208081eddc	TYPE:	WEIGHT:
SPEC.:	DIM.:	SERIAL No.: 1#-35K
MFR.: EVERFINE	SUR.: 0.258	Shielding Angle:

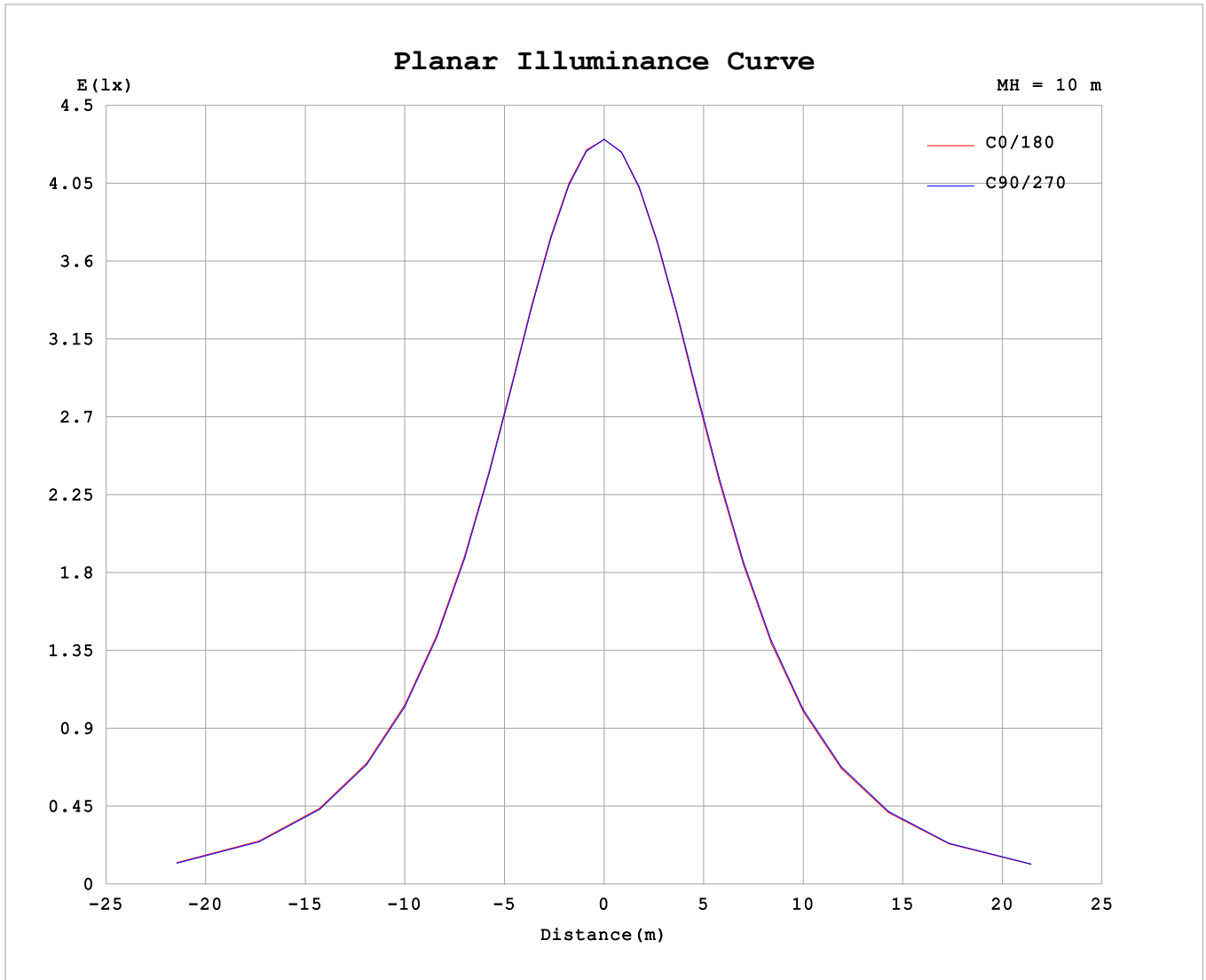
AvgL	cd/m2
L_0~180 (65) av	7234
L_0~180 (75) av	6797
L_0~180 (85) av	5755
L_90~270 (65) av	7192
L_90~270 (75) av	6652
L_90~270 (85) av	5235
L_45 (65) av	7204
L_45 (75) av	6688
L_45 (85) av	5442

Standard: GB/T 29293-2012

C Range: 0 - 360DEG
 C Interval: 30.0DEG
 Test Speed: HIGH
 Temperature:25.3℃
 Operators:DAMIN
 Test Date:2025-08-18

γ Range: 0 - 90DEG
 γ Interval: 5.0DEG
 Test System:EVERFINE GO-2000B_V1 SYSTEM V2.00.488
 Humidity:65.0%
 Test Distance:6.144m [K=1.0000]
 Remarks:

Planar Illuminance Curve



C Range: 0 - 360DEG
 C Interval: 30.0DEG
 Test Speed: HIGH
 Temperature: 25.3 °C
 Operators: DAMIN
 Test Date: 2025-08-18

γ Range: 0 - 90DEG
 γ Interval: 5.0DEG
 Test System: EVERFINE GO-2000B_V1 SYSTEM V2.00.488
 Humidity: 65.0%
 Test Distance: 6.144m [K=1.0000]
 Remarks:

