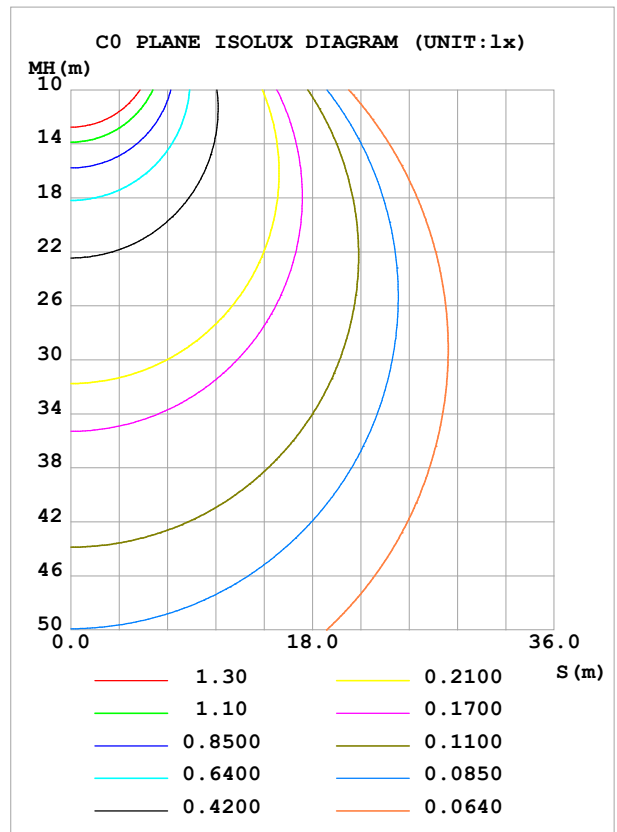
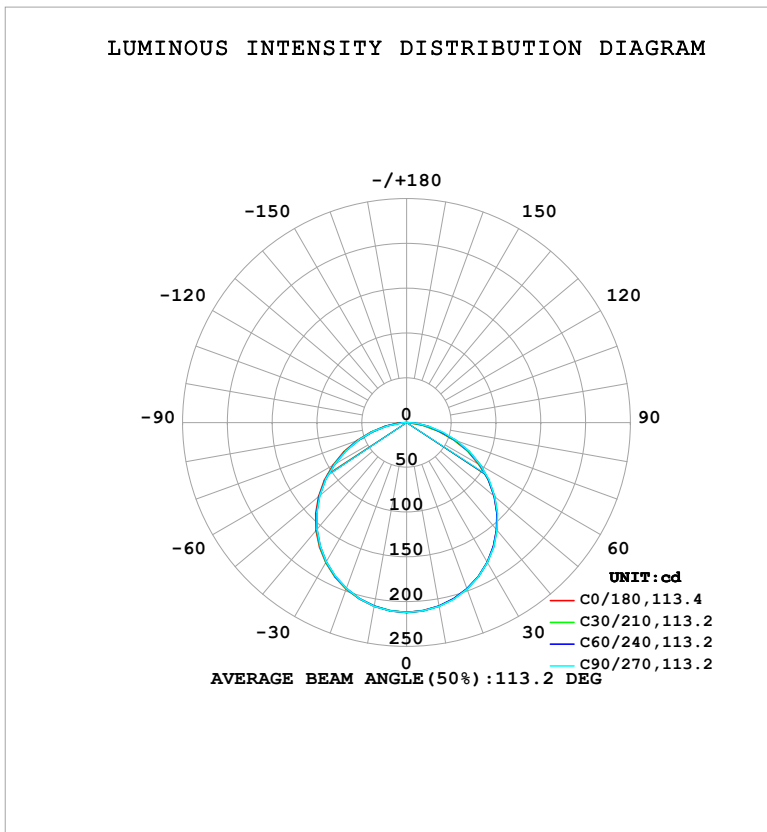


**LUMINAIRE PHOTOMETRIC TEST REPORT**

Test:U:120.73V I:0.0701A P:7.7747W PF:0.9189 Freq:60.00Hz Lamp Flux:609.627x1 lm		
NAME: 2930X.2929X	TYPE:	WEIGHT:
SPEC.:	DIM.:	SERIAL No.: 1#35K
MFR.: EVERFINE	SUR.: 0.091	Shielding Angle:

DATA OF LAMP		PHOTOMETRIC DATA			
MODEL2930X.2929X		Imax (cd)	211.8	S/MH (C0/180)	1.27
NOMINAL POWER (W)	8	LOR (%)	100.0	S/MH (C90/270)	1.26
RATED VOLTAGE (V)	120	TOTAL FLUX (lm)	609.63	η UP, DN (C0-180)	0.0, 50.2
NOMINAL FLUX (lm)	609.627	CIE CLASS	DIRECT	η UP, DN (C180-360)	0.0, 49.8
LAMPS INSIDE	1	η up (%)	0.0	CIBSE SHR NOM	1.25
TEST VOLTAGE (V)	120	η down (%)	100.0	CIBSE SHR MAX	1.35



C Range: 0 - 360DEG  
C Interval: 30.0DEG  
Test Speed: HIGH  
Temperature: 25.3 °C  
Operators: DAMIN  
Test Date: 2025-07-22

γ Range: 0 - 90DEG  
γ Interval: 5.0DEG  
Test System: EVERFINE GO-2000B\_V1 SYSTEM V2.00.488  
Humidity: 65.0%  
Test Distance: 6.144m [K=1.0000]  
Remarks:

ZONAL FLUX DIAGRAM

ZONAL FLUX DIAGRAM:

γ	C0	C45	C90	C135	C180	C225	C270	C315	γ	Φ zone	Φ total	%lum,lamp
10	208.1	208.2	208.4	208.4	208.4	208.1	208.2	208.3	0- 10	20.05	20.05	3.29,3.29
20	197.4	197.5	198.0	197.8	197.8	197.3	197.1	197.5	10- 20	57.52	77.56	12.7,12.7
30	180.1	180.2	180.6	180.6	180.7	179.9	179.5	180.1	20- 30	87.43	165.0	27.1,27.1
40	156.6	156.9	157.2	157.3	157.3	156.1	155.6	156.6	30- 40	105.8	270.8	44.4,44.4
50	127.6	128.1	128.6	128.6	128.6	127.1	126.5	127.6	40- 50	110.2	381.0	62.5,62.5
60	93.58	94.56	95.51	95.37	95.08	93.38	92.68	93.96	50- 60	99.64	480.6	78.8,78.8
70	55.57	57.64	59.68	59.69	59.21	57.07	56.36	57.90	60- 70	75.46	556.1	91.2,91.2
80	18.46	21.89	25.56	25.72	25.14	22.85	21.66	22.86	70- 80	42.44	598.5	98.2,98.2
90	0.6739	0.6711	0.5381	0.6287	0.7112	0.6818	0.7299	0.6313	80- 90	11.10	609.6	100,100
100									90-100			
110									100-110			
120									110-120			
130									120-130			
140									130-140			
150									140-150			
160									150-160			
170									160-170			
180									170-180			
DEG	LUMINOUS INTENSITY:cd									UNIT:lm		

Conical surface Flux(90deg): 326.29 lm

%lum = 53.5%

%lamp = 53.5%

Conical surface Flux(130deg): 522.1 lm

%lum = 85.6%

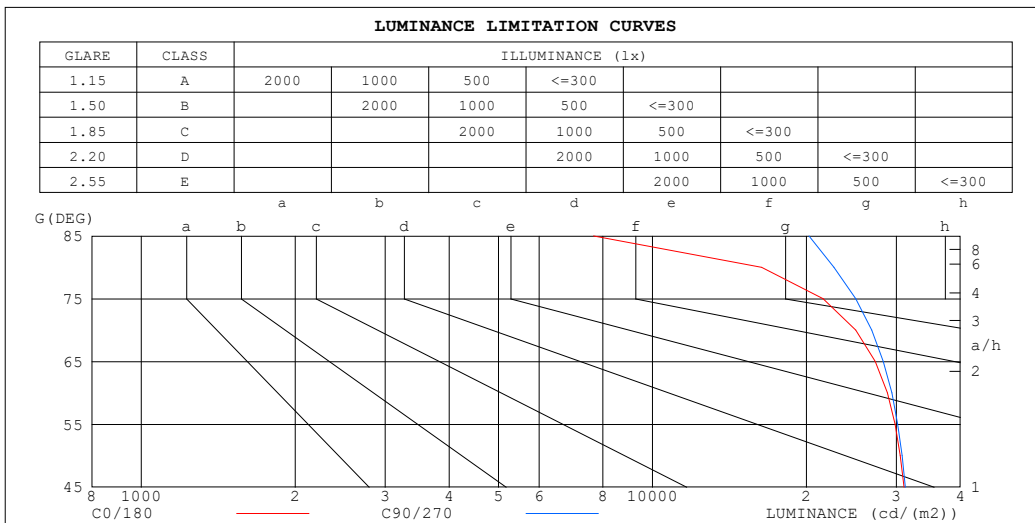
%lamp = 85.6%

C Range: 0 - 360DEG  
 C Interval: 30.0DEG  
 Test Speed: HIGH  
 Temperature:25.3 °C  
 Operators:DAMIN  
 Test Date:2025-07-22

γ Range: 0 - 90DEG  
 γ Interval: 5.0DEG  
 Test System:EVERFINE GO-2000B\_V1 SYSTEM V2.00.488  
 Humidity:65.0%  
 Test Distance:6.144m [K=1.0000]  
 Remarks:

**LUMINANCE LIMITATION CURVES**

Test:U:120.73V I:0.0701A P:7.7747W PF:0.9189 Freq:60.00Hz Lamp Flux:609.627x1 lm		
NAME: 2930X.2929X	TYPE:	WEIGHT:
SPEC.:	DIM.:	SERIAL No.: 1#35K
MFR.: EVERFINE	SUR.: 0.091	Shielding Angle:



LUMINANCE cd/(m2)		
G (DEG)	C0/180	C90/270
85	7674	20234
80	16351	22642
75	21577	24970
70	24995	26844
65	27286	28295
60	28793	29383
55	29827	30191
50	30541	30786
45	31077	31232

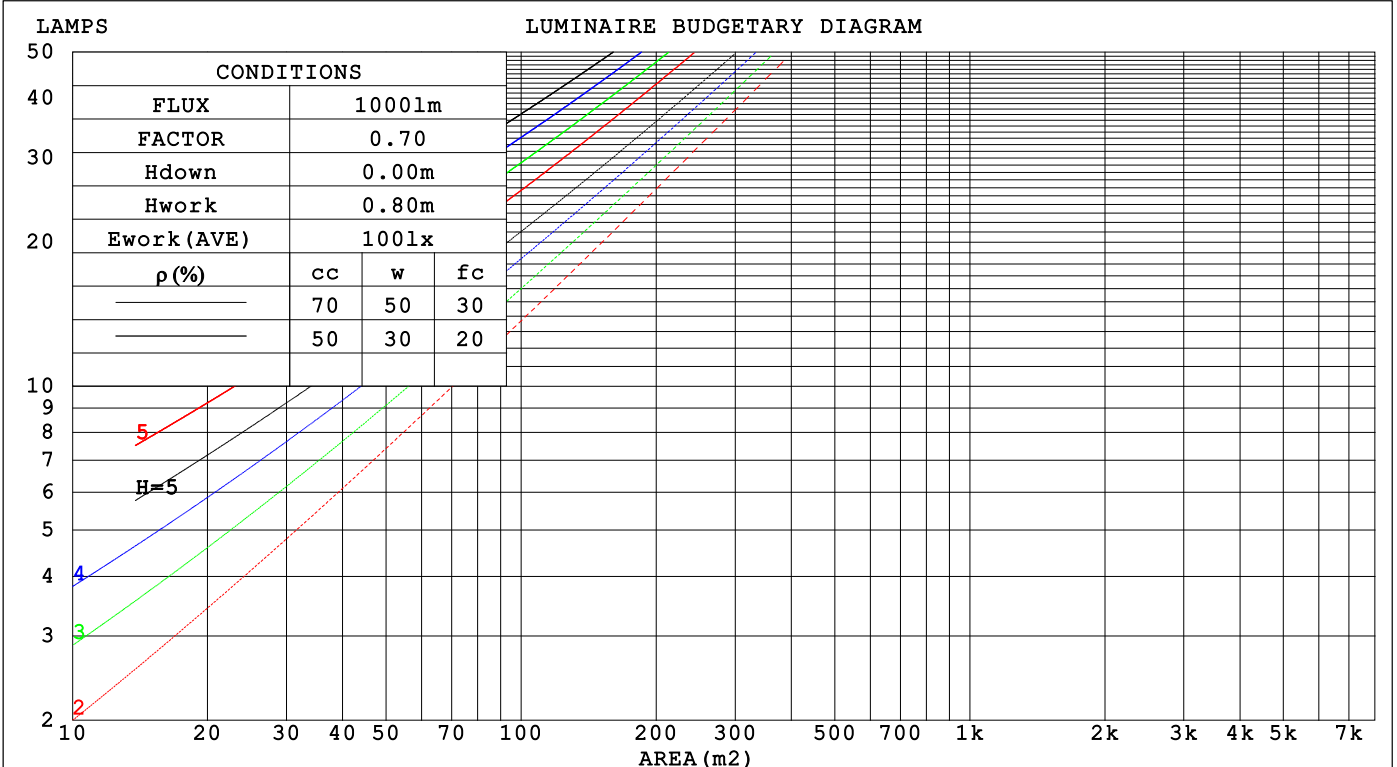
C Range: 0 - 360DEG  
 C Interval: 30.0DEG  
 Test Speed: HIGH  
 Temperature:25.3 °C  
 Operators:DAMIN  
 Test Date:2025-07-22

γ Range: 0 - 90DEG  
 γ Interval: 5.0DEG  
 Test System:EVERFINE GO-2000B\_V1 SYSTEM V2.00.488  
 Humidity:65.0%  
 Test Distance:6.144m [K=1.0000]  
 Remarks:

**CU AND LUMINAIRE BUDGETARY ESTIMATE DIAGRAM**

Test:U:120.73V I:0.0701A P:7.7747W PF:0.9189 Freq:60.00Hz Lamp Flux:609.627x1 lm		
NAME: 2930X.2929X	TYPE:	WEIGHT:
SPEC.:	DIM.:	SERIAL No.: 1#35K
MFR.: EVERFINE	SUR.: 0.091	Shielding Angle:

pcc	80%			70%			50%			30%			10%			0
pw	50%	30%	10%	50%	30%	10%	50%	30%	10%	50%	30%	10%	50%	30%	10%	0
pfc	20%			20%			20%			20%			20%			0
RCR	RCR:Room Cavity Ratio															
	Coefficients of Utilization(CU)															
0.0	1.19	1.19	1.19	1.16	1.16	1.16	1.11	1.11	1.11	1.06	1.06	1.06	1.02	1.02	1.02	1.00
1.0	1.04	.00	.96	1.02	.98	.94	.97	.94	.91	.93	.91	.88	.90	.88	.86	.84
2.0	.90	.84	.78	.89	.82	.77	.85	.80	.75	.82	.77	.73	.79	.75	.72	.70
3.0	.79	.71	.65	.78	.70	.64	.75	.68	.63	.72	.66	.62	.69	.65	.61	.58
4.0	.70	.61	.55	.69	.61	.54	.66	.59	.53	.64	.58	.53	.62	.56	.52	.50
5.0	.63	.54	.47	.62	.53	.47	.59	.52	.46	.57	.51	.46	.56	.50	.45	.43
6.0	.56	.47	.41	.55	.47	.41	.54	.46	.40	.52	.45	.40	.50	.44	.40	.38
7.0	.51	.42	.36	.50	.42	.36	.49	.41	.36	.47	.40	.35	.46	.40	.35	.33
8.0	.47	.38	.32	.46	.38	.32	.45	.37	.32	.43	.37	.32	.42	.36	.31	.30
9.0	.43	.34	.29	.42	.34	.29	.41	.34	.29	.40	.33	.29	.39	.33	.28	.27
10.0	.39	.31	.26	.39	.31	.26	.38	.31	.26	.37	.30	.26	.36	.30	.26	.24



C Range: 0 - 360DEG  
 C Interval: 30.0DEG  
 Test Speed: HIGH  
 Temperature:25.3 °C  
 Operators:DAMIN  
 Test Date:2025-07-22

γ Range: 0 - 90DEG  
 γ Interval: 5.0DEG  
 Test System:EVERFINE GO-2000B\_V1 SYSTEM V2.00.488  
 Humidity:65.0%  
 Test Distance:6.144m [K=1.0000]  
 Remarks:

WEC AND CCEC

Test:U:120.73V I:0.0701A P:7.7747W PF:0.9189 Freq:60.00Hz Lamp Flux:609.627x1 lm		
NAME: 2930X.2929X	TYPE:	WEIGHT:
SPEC.:	DIM.:	SERIAL No.: 1#35K
MFR.: EVERFINE	SUR.: 0.091	Shielding Angle:

$\rho_{CC}$	80%			70%			50%			30%			10%			0
$\rho_w$	50%	30%	10%	50%	30%	10%	50%	30%	10%	50%	30%	10%	50%	30%	10%	0
$\rho_{fc}$	20%			20%			20%			20%			20%			0
RCR	RCR:Room Cavity Ratio						Wall Exitance Coefficients(WEC)									
0.0																
1.0	.309	.176	.056	.302	.172	.055	.289	.166	.053	.277	.160	.051	.266	.154	.050	
2.0	.292	.160	.049	.285	.157	.048	.274	.152	.047	.263	.148	.046	.253	.143	.045	
3.0	.270	.144	.043	.265	.142	.043	.254	.138	.042	.245	.134	.041	.236	.131	.040	
4.0	.249	.130	.038	.245	.128	.038	.235	.125	.037	.227	.122	.037	.219	.119	.036	
5.0	.231	.118	.034	.226	.116	.034	.218	.114	.033	.211	.111	.033	.203	.109	.033	
6.0	.214	.107	.031	.210	.106	.031	.203	.104	.030	.196	.102	.030	.190	.100	.030	
7.0	.199	.098	.028	.196	.097	.028	.189	.096	.028	.183	.094	.027	.177	.092	.027	
8.0	.186	.091	.026	.183	.090	.025	.177	.088	.025	.172	.087	.025	.167	.085	.025	
9.0	.174	.084	.024	.172	.084	.023	.166	.082	.023	.161	.081	.023	.157	.080	.023	
10.0	.164	.079	.022	.161	.078	.022	.157	.077	.022	.152	.076	.021	.148	.074	.021	

$\rho_{CC}$	80%			70%			50%			30%			10%			0
$\rho_w$	50%	30%	10%	50%	30%	10%	50%	30%	10%	50%	30%	10%	50%	30%	10%	0
$\rho_{fc}$	20%			20%			20%			20%			20%			0
RCR	RCR:Room Cavity Ratio						Ceiling Cavity Exitance Coefficients(CCEC)									
0.0																
1.0	.190	.190	.190	.163	.163	.163	.111	.111	.111	.064	.064	.064	.020	.020	.020	
2.0	.180	.156	.134	.154	.134	.116	.106	.092	.080	.061	.053	.047	.019	.017	.015	
3.0	.172	.132	.098	.148	.114	.085	.101	.079	.059	.058	.046	.035	.019	.015	.011	
4.0	.165	.114	.074	.141	.099	.064	.097	.068	.045	.056	.040	.027	.018	.013	.009	
5.0	.157	.101	.058	.135	.087	.051	.093	.061	.036	.054	.036	.021	.017	.012	.007	
6.0	.149	.091	.047	.128	.078	.041	.088	.055	.029	.051	.032	.017	.017	.010	.006	
7.0	.142	.082	.039	.122	.071	.034	.084	.050	.024	.049	.029	.014	.016	.010	.005	
8.0	.136	.075	.033	.117	.065	.029	.081	.046	.020	.047	.027	.012	.015	.009	.004	
9.0	.129	.070	.029	.111	.060	.025	.077	.042	.018	.045	.025	.011	.014	.008	.003	
10.0	.123	.065	.025	.106	.056	.022	.073	.039	.016	.043	.023	.009	.014	.008	.003	
10.0	.117	.060	.022	.101	.052	.020	.070	.037	.014	.041	.022	.008	.013	.007	.003	

C Range: 0 - 360DEG  
 C Interval: 30.0DEG  
 Test Speed: HIGH  
 Temperature:25.3 °C  
 Operators:DAMIN  
 Test Date:2025-07-22

$\gamma$  Range: 0 - 90DEG  
 $\gamma$  Interval: 5.0DEG  
 Test System:EVERFINE GO-2000B\_V1 SYSTEM V2.00.488  
 Humidity:65.0%  
 Test Distance:6.144m [K=1.0000]  
 Remarks:

**UGR(Unified Glare Rating) Table**

Test:U:120.73V I:0.0701A P:7.7747W PF:0.9189 Freq:60.00Hz Lamp Flux:609.627x1 lm		
NAME: 2930X.2929X	TYPE:	WEIGHT:
SPEC.:	DIM.:	SERIAL No.: 1#35K
MFR.: EVERFINE	SUR.: 0.091	Shielding Angle:

ceiling/cavity	0.7	0.7	0.5	0.5	0.3	0.7	0.7	0.5	0.5	0.3
walls	0.5	0.3	0.5	0.3	0.3	0.5	0.3	0.5	0.3	0.3
working plane	0.2	0.2	0.2	0.2	0.2	0.2	0.2	0.2	0.2	0.2

Room dimensions	Viewed crosswise					Viewed endwise				
x = 2H y = 2H	26.4	27.9	26.7	28.2	28.4	26.5	28.0	26.7	28.2	28.4
3H	27.8	29.2	28.1	29.5	29.7	28.0	29.4	28.3	29.6	29.9
4H	28.3	29.6	28.6	29.9	30.2	28.6	29.9	28.9	30.2	30.4
6H	28.5	29.8	28.9	30.1	30.3	29.0	30.2	29.3	30.5	30.8
8H	28.5	29.7	28.8	30.0	30.3	29.1	30.3	29.4	30.6	30.9
12H	28.5	29.6	28.8	29.9	30.2	29.2	30.3	29.5	30.6	30.9
4H 2H	27.0	28.4	27.3	28.6	28.9	27.1	28.4	27.4	28.7	28.9
3H	28.6	29.8	29.0	30.1	30.4	28.7	29.9	29.1	30.2	30.5
4H	29.2	30.2	29.6	30.6	30.9	29.4	30.5	29.8	30.8	31.2
6H	29.5	30.4	29.9	30.8	31.1	30.0	30.9	30.4	31.3	31.6
8H	29.5	30.4	29.9	30.7	31.1	30.1	31.0	30.5	31.4	31.8
12H	29.5	30.3	29.9	30.7	31.1	30.3	31.1	30.7	31.5	31.9
8H 4H	29.4	30.3	29.8	30.7	31.0	29.6	30.5	30.1	30.9	31.3
6H	29.8	30.5	30.2	30.9	31.4	30.3	31.0	30.7	31.4	31.9
8H	29.8	30.5	30.3	30.9	31.3	30.5	31.2	31.0	31.6	32.1
12H	29.8	30.4	30.3	30.8	31.3	30.7	31.3	31.2	31.7	32.2
12H 4H	29.4	30.2	29.8	30.6	31.0	29.6	30.4	30.1	30.8	31.2
6H	29.8	30.5	30.3	30.9	31.3	30.3	31.0	30.8	31.4	31.8
8H	29.9	30.4	30.3	30.9	31.4	30.6	31.1	31.1	31.6	32.1

Variations with the observer position at spacings(CIE Pub.117):		
S = 1.0H	+ 0.1 / - 0.2	+ 0.1 / - 0.2
1.5H	+ 0.2 / - 0.4	+ 0.2 / - 0.3
2.0H	+ 0.3 / - 0.4	+ 0.2 / - 0.3

CIE Pub.117, 609.6 lm Total Lamp Luminous Flux Correct (8log(F/F0) = -1.7)  
Area: 0.0065 m2

C Range: 0 - 360DEG  
C Interval: 30.0DEG  
Test Speed: HIGH  
Temperature:25.3°C  
Operators:DAMIN  
Test Date:2025-07-22

γ Range: 0 - 90DEG  
γ Interval: 5.0DEG  
Test System:EVERFINE GO-2000B\_V1 SYSTEM V2.00.488  
Humidity:65.0%  
Test Distance:6.144m [K=1.0000]  
Remarks:

**UTILIZATION FACTORS TABLE**

Test:U:120.73V I:0.0701A P:7.7747W PF:0.9189 Freq:60.00Hz Lamp Flux:609.627x1 lm		
NAME: 2930X.2929X	TYPE:	WEIGHT:
SPEC.:	DIM.:	SERIAL No.: 1#35K
MFR.: EVERFINE	SUR.: 0.091	Shielding Angle:

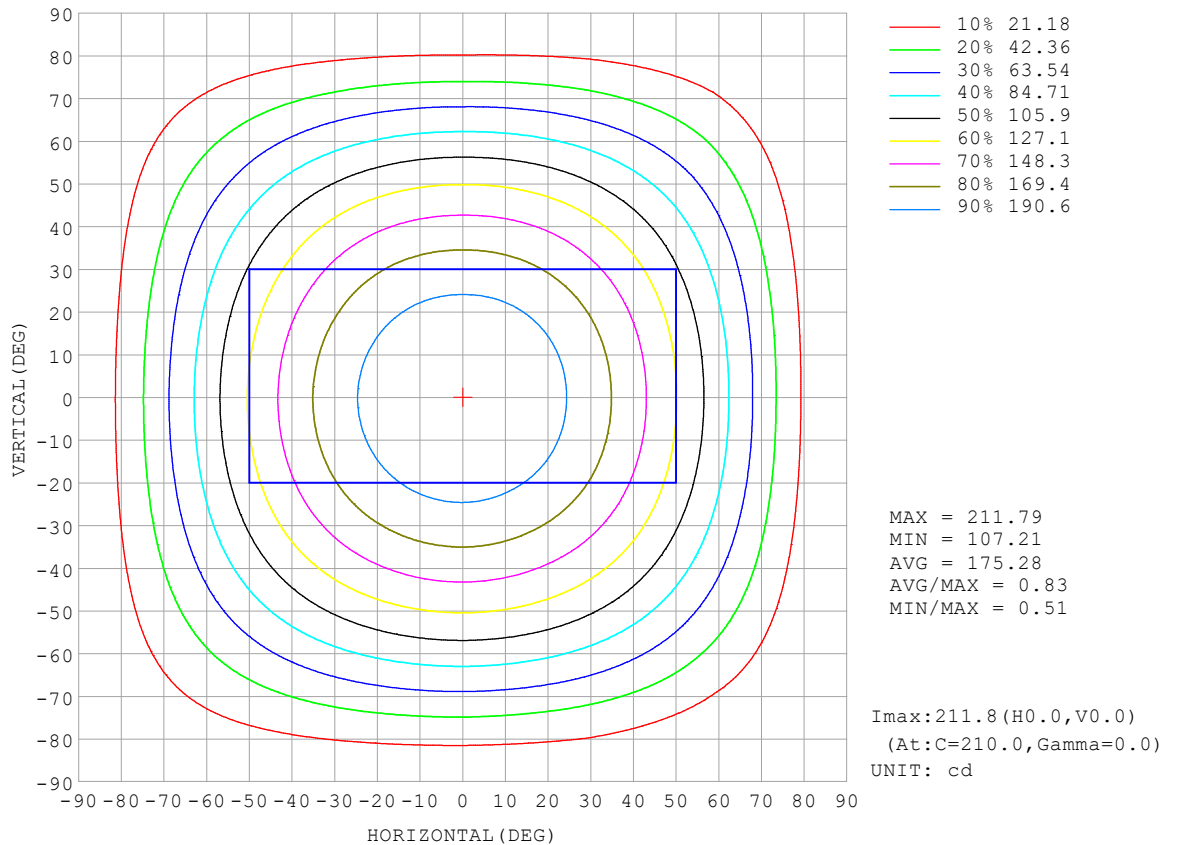
REFLECTANCE										
Ceiling	0.8	0.8	0.8	0.7	0.7	0.7	0.5	0.5	0.5	0
Walls	0.7	0.5	0.3	0.7	0.5	0.3	0.7	0.5	0.3	0
Working plane	0.2	0.2	0.2	0.2	0.2	0.2	0.2	0.2	0.2	0
ROOM INDEX	UTILIZATION FACTORS (PERCENT) $k(RI) \times RCR = 5$									
k = 0.60	57	46	39	57	45	39	55	45	38	32
0.80	67	56	48	66	55	48	65	55	48	41
1.00	76	65	57	75	64	57	72	66	57	49
1.25	83	73	65	82	72	65	79	70	64	57
1.50	88	78	71	86	77	71	83	75	70	62
2.00	95	86	80	93	85	79	90	83	78	70
2.50	99	91	85	97	90	84	93	87	82	74
3.00	102	95	90	100	94	89	96	91	87	78
4.00	106	101	96	104	99	95	100	95	92	83
5.00	109	104	100	106	102	98	102	98	95	86
ROOM INDEX	UF(total)									Direct
According to DIN EN 13032-2 2004			Suspended				SHRNOM = 1.25			

C Range: 0 - 360DEG  
 C Interval: 30.0DEG  
 Test Speed: HIGH  
 Temperature:25.3 °C  
 Operators:DAMIN  
 Test Date:2025-07-22

$\gamma$  Range: 0 - 90DEG  
 $\gamma$  Interval: 5.0DEG  
 Test System:EVERFINE GO-2000B\_V1 SYSTEM V2.00.488  
 Humidity:65.0%  
 Test Distance:6.144m [K=1.0000]  
 Remarks:

**ISOCANDELA DIAGRAM**

Test:U:120.73V I:0.0701A P:7.7747W PF:0.9189 Freq:60.00Hz Lamp Flux:609.627x1 lm		
NAME: 2930X.2929X	TYPE:	WEIGHT:
SPEC.:	DIM.:	SERIAL No.: 1#35K
MFR.: EVERFINE	SUR.: 0.091	Shielding Angle:



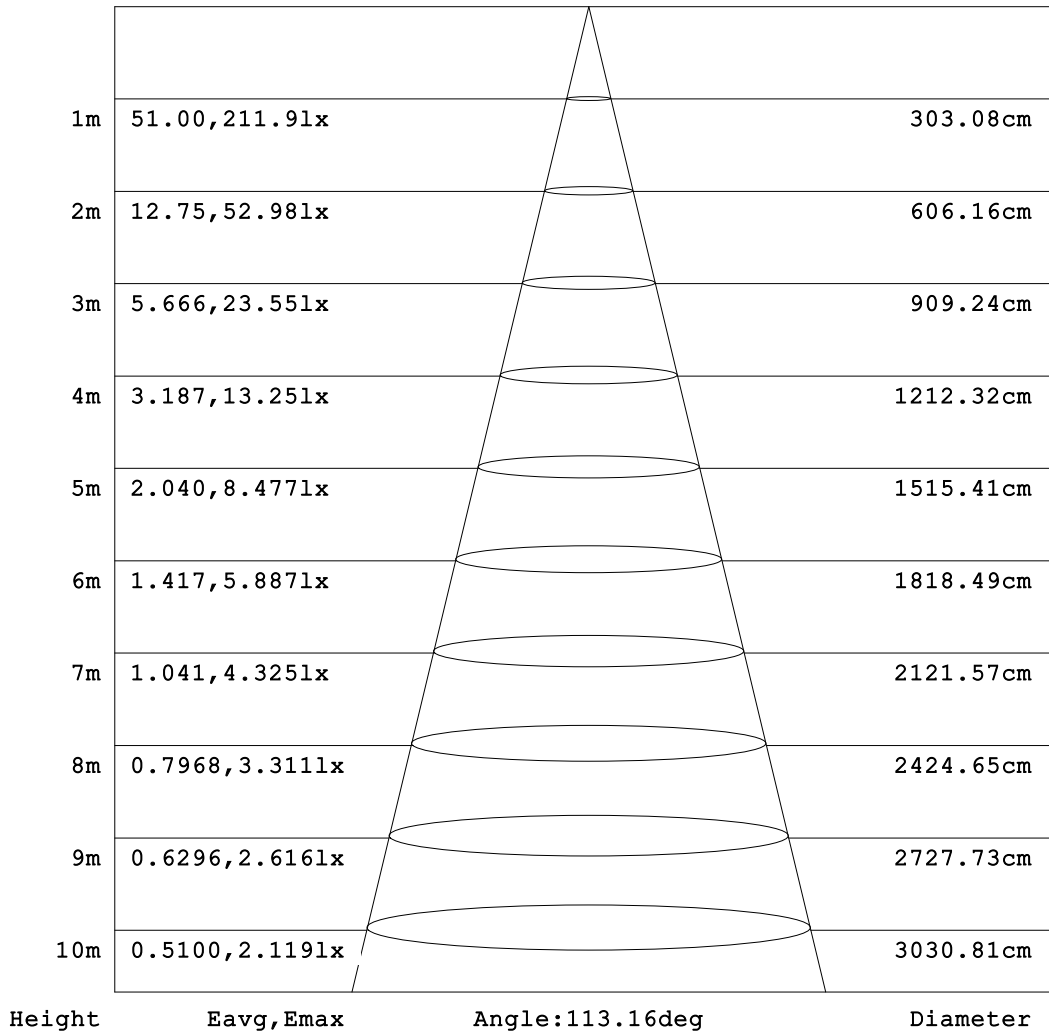
C Range: 0 - 360DEG  
 C Interval: 30.0DEG  
 Test Speed: HIGH  
 Temperature:25.3 °C  
 Operators:DAMIN  
 Test Date:2025-07-22

γ Range: 0 - 90DEG  
 γ Interval: 5.0DEG  
 Test System:EVERFINE GO-2000B\_V1 SYSTEM V2.00.488  
 Humidity:65.0%  
 Test Distance:6.144m [K=1.0000]  
 Remarks:

**AAI Figure**

Test:U:120.73V I:0.0701A P:7.7747W PF:0.9189 Freq:60.00Hz Lamp Flux:609.627x1 lm		
NAME: 2930X.2929X	TYPE:	WEIGHT:
SPEC.:	DIM.:	SERIAL No.: 1#35K
MFR.: EVERFINE	SUR.: 0.091	Shielding Angle:

Flux out:480.6 lm



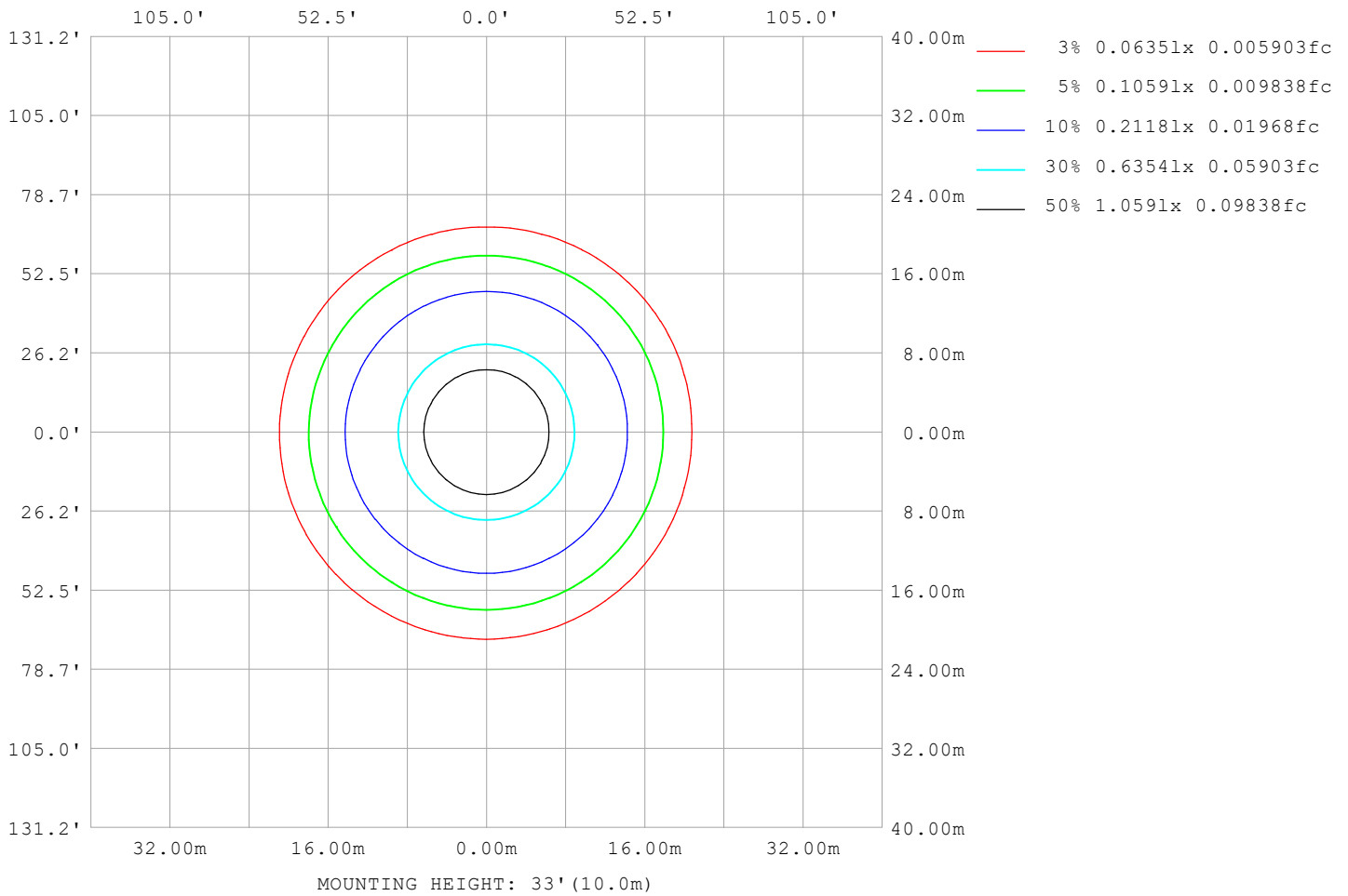
Note: The Curves indicate the illuminated area and the average illumination when the luminaire is at different distance.

C Range: 0 - 360DEG  
C Interval: 30.0DEG  
Test Speed: HIGH  
Temperature: 25.3 °C  
Operators: DAMIN  
Test Date: 2025-07-22

γ Range: 0 - 90DEG  
γ Interval: 5.0DEG  
Test System: EVERFINE GO-2000B\_V1 SYSTEM V2.00.488  
Humidity: 65.0%  
Test Distance: 6.144m [K=1.0000]  
Remarks:

**ISOLUX DIAGRAM**

Test:U:120.73V I:0.0701A P:7.7747W PF:0.9189 Freq:60.00Hz Lamp Flux:609.627x1 lm		
NAME: 2930X.2929X	TYPE:	WEIGHT:
SPEC.:	DIM.:	SERIAL No.: 1#35K
MFR.: EVERFINE	SUR.: 0.091	Shielding Angle:



C Range: 0 - 360DEG  
 C Interval: 30.0DEG  
 Test Speed: HIGH  
 Temperature:25.3 °C  
 Operators:DAMIN  
 Test Date:2025-07-22

γ Range: 0 - 90DEG  
 γ Interval: 5.0DEG  
 Test System:EVERFINE GO-2000B\_V1 SYSTEM V2.00.488  
 Humidity:65.0%  
 Test Distance:6.144m [K=1.0000]  
 Remarks:

**LED Avg.L Report**

Test:U:120.73V I:0.0701A P:7.7747W PF:0.9189 Freq:60.00Hz Lamp Flux:609.627x1 lm		
NAME: 2930X.2929X	TYPE:	WEIGHT:
SPEC.:	DIM.:	SERIAL No.: 1#35K
MFR.: EVERFINE	SUR.: 0.091	Shielding Angle:

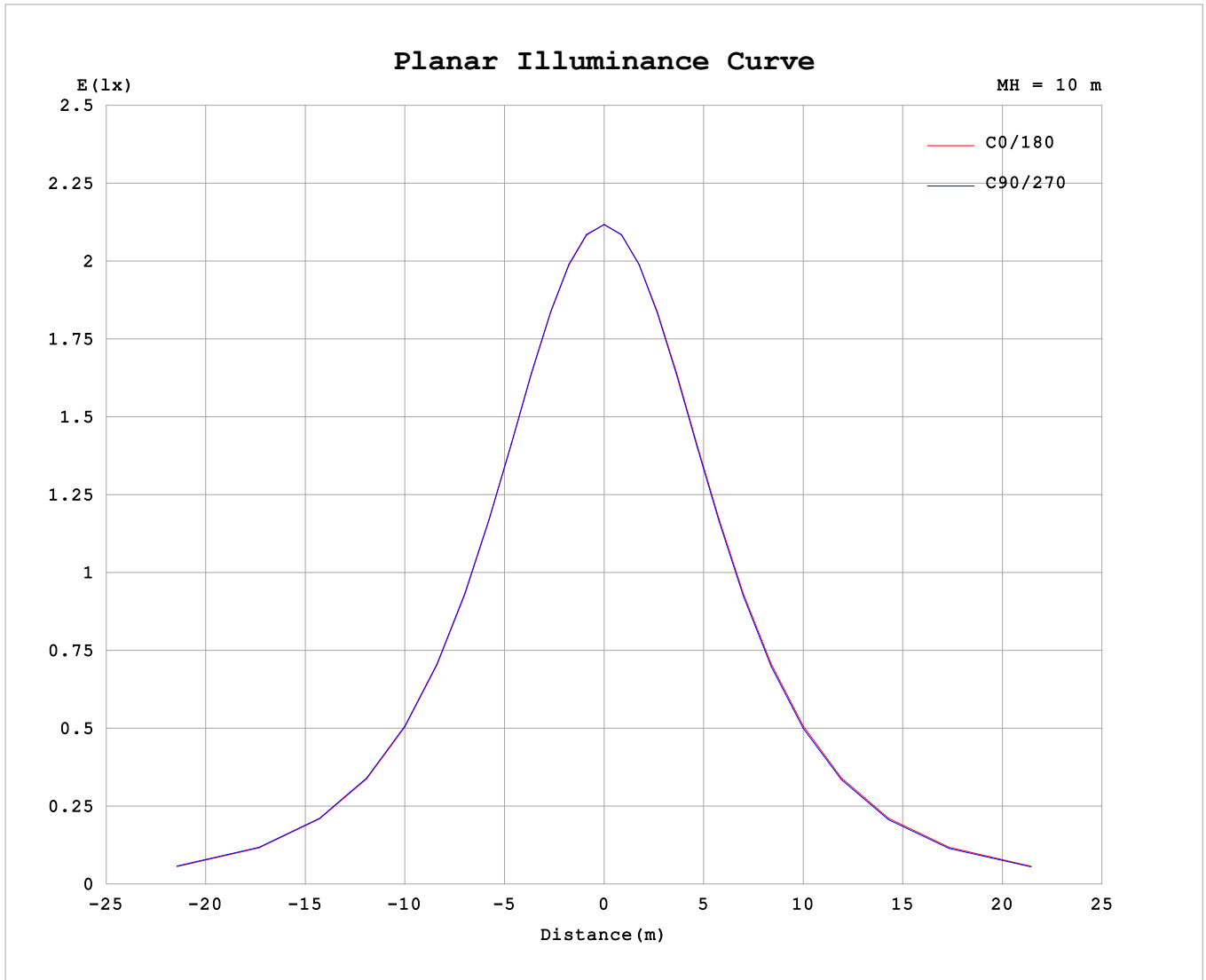
AvgL	cd/m2
L_0~180 (65) av	27709
L_0~180 (75) av	23147
L_0~180 (85) av	13324
L_90~270 (65) av	27725
L_90~270 (75) av	23951
L_90~270 (85) av	14673
L_45 (65) av	27808
L_45 (75) av	23839
L_45 (85) av	15673

Standard: GB/T 29293-2012

C Range: 0 - 360DEG  
 C Interval: 30.0DEG  
 Test Speed: HIGH  
 Temperature:25.3℃  
 Operators:DAMIN  
 Test Date:2025-07-22

γ Range: 0 - 90DEG  
 γ Interval: 5.0DEG  
 Test System:EVERFINE GO-2000B\_V1 SYSTEM V2.00.488  
 Humidity:65.0%  
 Test Distance:6.144m [K=1.0000]  
 Remarks:

Planar Illuminance Curve



C Range: 0 - 360DEG  
C Interval: 30.0DEG  
Test Speed: HIGH  
Temperature: 25.3 °C  
Operators: DAMIN  
Test Date: 2025-07-22

γ Range: 0 - 90DEG  
γ Interval: 5.0DEG  
Test System: EVERFINE GO-2000B\_V1 SYSTEM V2.00.488  
Humidity: 65.0%  
Test Distance: 6.144m [K=1.0000]  
Remarks:

