



UL LLC
1075 W Lambert Rd Suite B
Brea, CA 92821

Indoor Distribution Test Report

Relevant Standards
IES LM-79-2008, ANSI C82.77-2002

Prepared For
Access Lighting

Jason Stone
14410 Myford Rd
Irvine, CA 92606
United States

Catalog Number
62483LEDD-BS/OPL

Order Number
12014271
Test Number
12014271.09

Test Date

2017-11-03

Prepared By

William Escobar, Technician

Approved By

Eric Gaudreau, Senior Engineering Associate

The results contained in this report pertain only to the tested sample.
This report shall not be reproduced, except in full, without written approval of Underwriters Laboratories.
This report must not be used by the client to claim product certification, approval, or endorsement by
NVLAP, NIST, or any agency of the Federal Government.



Luminaire Description: Rectangular metal housing with diffuse glass lens
Lamp: 120 White LED's
Mounting: Surface – Wall

Luminaire



Luminaire Characteristics

Luminous Length: 2.50 in.
Luminous Width: 34.50 in.
Luminous Height: 2.50 in.

Summary of Results

Total Luminaire Output: 2337 Lumens
Luminaire Efficacy: 60.6 lm/w
Maximum Candela: 380 Candela

Test Conditions

Test Temperature: 24.9 °C
Voltage: 120.1 VAC
Current: 0.3466 A
Power: 38.59 W
Power Factor: 0.927
Frequency: 60 Hz
Current THD: 40.2 %

Laboratory results may not be representative of field performance
Ballast factors have not been applied



Distribution - Goniophotometer

Distribution Test Conditions

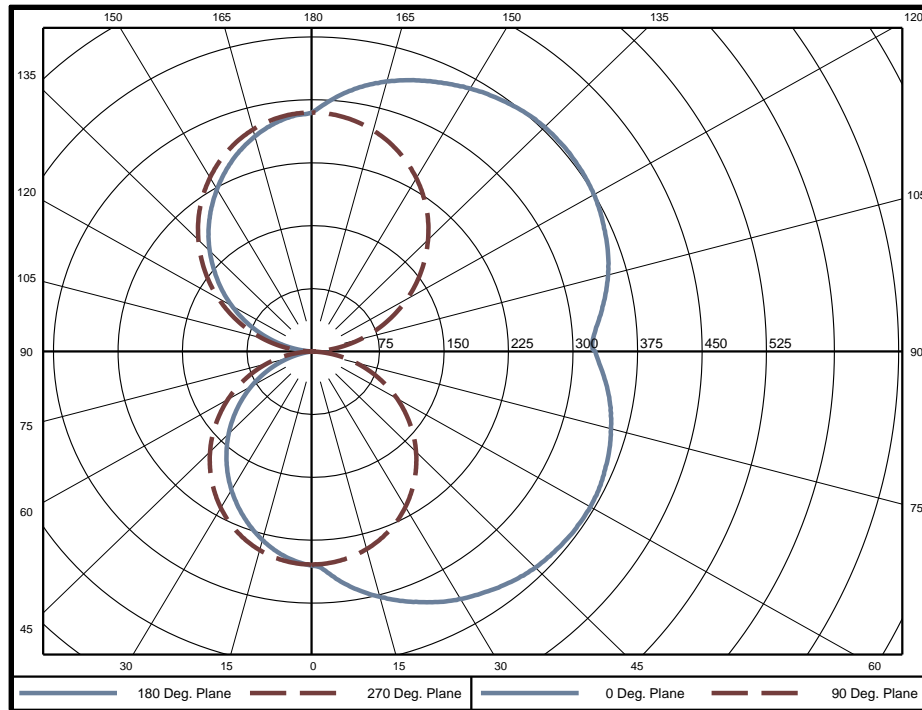
Temperature	Voltage	Current	Power	Power Factor	Frequency	Current THD
24.9 °C	120.1 VAC	0.3466 A	38.59 W	0.927	60 Hz	40.2 %

Summary of Results

Spacing Criteria
 0-180: 2.02
 90-270: 1.25

Total Lumen Output: 2337 Lumens
Luminaire Efficacy: 60.6 lm/w
Maximum Candela: 380 Candela

Polar Plot



Zonal Lumen Summary

Zone	Lumens	% of Luminaire	Zone	Lumens	% of Luminaire	Zone	Lumens	% of Luminaire
0-5	6.10	0.3%	60-65	83.47	3.6%	120-125	93.41	4.0%
5-10	18.40	0.8%	65-70	79.35	3.4%	125-130	94.56	4.0%
10-15	30.59	1.3%	70-75	73.94	3.2%	130-135	93.66	4.0%
15-20	42.29	1.8%	75-80	67.48	2.9%	135-140	90.72	3.9%
20-25	53.12	2.3%	80-85	60.43	2.6%	140-145	85.62	3.7%
25-30	62.76	2.7%	85-90	55.11	2.4%	145-150	78.50	3.4%
30-35	70.97	3.0%	90-95	54.52	2.3%	150-155	69.59	3.0%
35-40	77.55	3.3%	95-100	62.01	2.7%	155-160	59.09	2.5%
40-45	82.40	3.5%	100-105	70.75	3.0%	160-165	47.21	2.0%
45-50	85.38	3.7%	105-110	78.63	3.4%	165-170	34.26	1.5%
50-55	86.49	3.7%	110-115	85.16	3.6%	170-175	20.66	0.9%
55-60	85.90	3.7%	115-120	90.18	3.9%	175-180	6.85	0.3%

Zone	Lumens	% of Luminaire
0-40	362	15.5%
0-60	702	30.0%
0-90	1122	48.0%
90-180	1215	52.0%



Candela Tabulation
Horizontal Angle (Degrees)

	0	22.5	45	67.5	90	112.5	135	157.5	180	202.5	225	247.5	270	292.5	315	337.5
0	254.9	254.9	254.9	254.9	254.9	254.9	254.9	254.9	254.9	254.9	254.9	254.9	254.9	254.9	254.9	254.9
5	268.2	268.7	261.1	255.1	252.7	251.5	250.1	250.2	249.6	250.2	250.1	251.5	252.7	255.1	261.1	268.7
10	287.1	286.0	273.6	258.2	249.2	245.9	242.9	242.3	241.4	242.3	242.9	245.9	249.2	258.2	273.6	286.0
15	302.6	300.4	284.1	261.0	243.5	238.4	234.0	232.7	230.6	232.7	234.0	238.4	243.5	261.0	284.1	300.4
20	317.0	312.5	291.7	261.6	235.9	229.2	223.8	221.2	218.1	221.2	223.8	229.2	235.9	261.6	291.7	312.5
25	329.8	322.4	296.7	259.6	225.7	217.8	211.2	207.8	204.5	207.8	211.2	217.8	225.7	259.6	296.7	322.4
30	340.6	330.5	299.6	255.4	213.5	204.4	197.0	192.9	189.3	192.9	197.0	204.4	213.5	255.4	299.6	330.5
35	349.9	337.4	300.5	248.9	199.6	189.4	181.4	176.8	173.0	176.8	181.4	189.4	199.6	248.9	300.5	337.4
40	358.4	342.8	299.9	240.6	184.3	172.9	164.6	159.5	155.8	159.5	164.6	172.9	184.3	240.6	299.9	342.8
45	364.6	346.4	297.2	230.5	167.6	155.6	147.0	141.6	137.9	141.6	147.0	155.6	167.6	230.5	297.2	346.4
50	368.2	348.1	293.3	218.5	149.8	137.1	128.8	122.8	119.2	122.8	128.8	137.1	149.8	218.5	293.3	348.1
55	370.8	348.6	288.4	205.8	131.2	118.0	109.7	103.6	99.9	103.6	109.7	118.0	131.2	205.8	288.4	348.6
60	371.0	346.8	281.4	192.0	112.3	98.5	90.5	84.3	80.7	84.3	90.5	98.5	112.3	192.0	281.4	346.8
65	368.8	342.6	272.8	177.3	92.2	79.0	70.7	64.8	61.2	64.8	70.7	79.0	92.2	177.3	272.8	342.6
70	364.4	336.0	262.9	162.0	72.3	59.7	51.5	45.5	41.9	45.5	51.5	59.7	72.3	162.0	262.9	336.0
75	358.0	328.4	251.9	146.8	52.5	40.6	32.7	26.6	23.4	26.6	32.7	40.6	52.5	146.8	251.9	328.4
80	349.5	319.1	240.3	131.9	32.8	22.3	14.2	8.8	6.0	8.8	14.2	22.3	32.8	131.9	240.3	319.1
85	338.6	307.7	227.4	117.0	13.8	4.8	0.0	0.0	0.0	0.0	0.0	4.8	13.8	117.0	227.4	307.7
90	327.5	296.5	215.7	104.6	0.1	0.0	0.0	0.0	0.0	0.0	0.0	0.0	0.1	104.6	215.7	296.5
95	329.7	301.2	223.7	116.3	15.5	10.5	6.1	3.0	2.8	3.0	6.1	10.5	15.5	116.3	223.7	301.2
100	342.5	314.4	238.5	133.3	36.7	30.5	26.2	22.7	22.5	22.7	26.2	30.5	36.7	133.3	238.5	314.4
105	354.5	326.7	253.3	151.3	58.7	51.3	47.3	43.7	43.2	43.7	47.3	51.3	58.7	151.3	253.3	326.7
110	363.4	337.3	266.9	169.4	81.1	72.7	68.7	65.1	64.8	65.1	68.7	72.7	81.1	169.4	266.9	337.3
115	370.3	345.6	279.5	187.3	103.3	94.6	90.3	86.6	86.8	86.6	90.3	94.6	103.3	187.3	279.5	345.6
120	375.6	353.0	290.9	204.7	125.3	116.2	111.8	107.9	107.9	107.9	111.8	116.2	125.3	204.7	290.9	353.0
125	378.8	357.9	300.8	221.1	146.6	137.7	133.3	129.2	129.2	129.2	133.3	137.7	146.6	221.1	300.8	357.9
130	380.3	360.4	308.5	236.1	167.1	158.5	153.5	149.7	149.2	149.7	153.5	158.5	167.1	236.1	308.5	360.4
135	379.5	361.5	314.6	250.4	187.0	178.6	173.6	170.0	169.5	170.0	173.6	178.6	187.0	250.4	314.6	361.5
140	375.8	360.6	319.5	262.5	205.7	197.5	192.4	189.0	188.8	189.0	192.4	197.5	205.7	262.5	319.5	360.6
145	370.0	357.2	322.8	272.9	222.9	214.9	210.1	206.7	206.3	206.7	210.1	214.9	222.9	272.9	322.8	357.2
150	362.6	352.8	324.0	281.1	238.3	230.7	226.3	223.1	222.9	223.1	226.3	230.7	238.3	281.1	324.0	352.8
155	353.9	346.8	323.4	287.2	251.8	244.9	241.1	238.6	238.4	238.6	241.1	244.9	251.8	287.2	323.4	346.8
160	344.4	339.2	320.3	291.0	263.4	257.1	254.4	252.2	252.1	252.2	254.4	257.1	263.4	291.0	320.3	339.2
165	333.4	329.5	314.9	292.4	272.6	267.5	265.7	263.8	264.0	263.8	265.7	267.5	272.6	292.4	314.9	329.5
170	320.0	316.9	306.9	291.1	279.4	275.1	274.7	273.2	273.8	273.2	274.7	275.1	279.4	291.1	306.9	316.9
175	303.2	301.2	296.4	287.6	283.5	280.0	281.0	280.2	281.0	280.2	281.0	280.0	283.5	287.6	296.4	301.2
180	284.3	284.3	284.3	284.3	284.3	284.3	284.3	284.3	284.3	284.3	284.3	284.3	284.3	284.3	284.3	284.3

Average Luminance (cd/m²)
Horizontal Angle (Degrees)

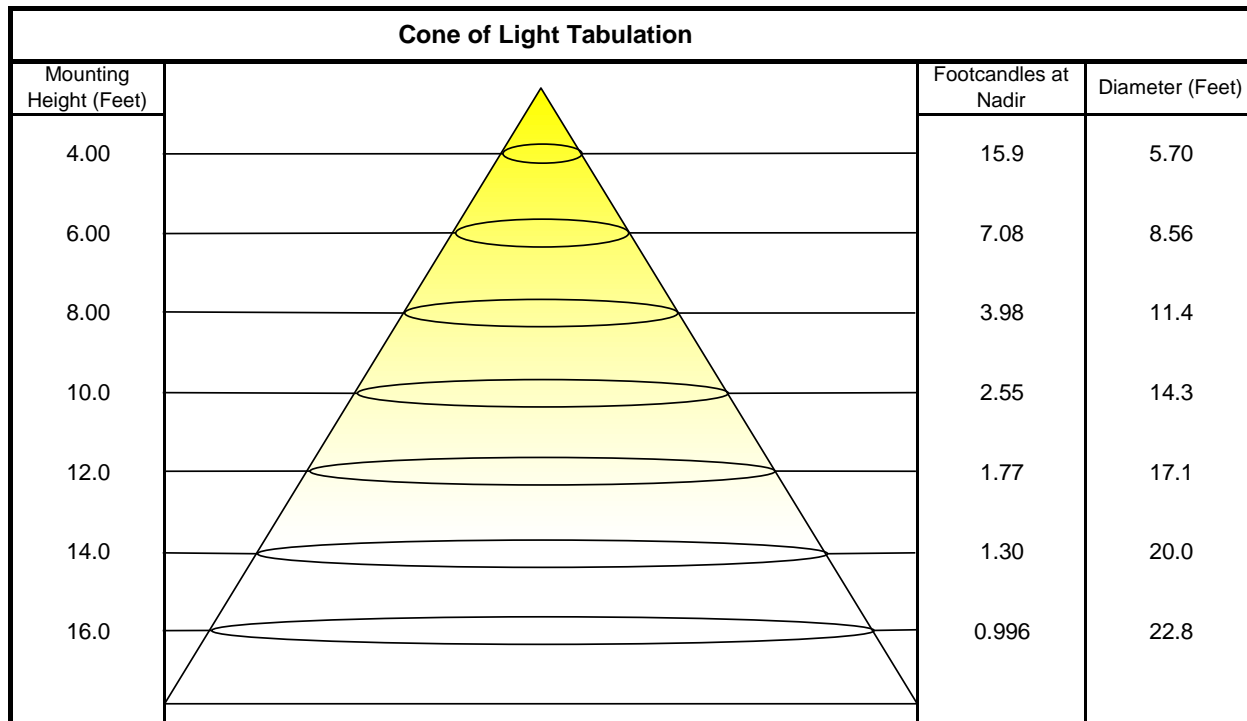
	0	45	90
0	4582	4582	4582
45	4633	4295	3972
55	4785	4339	3726
65	4987	4417	3393
75	5252	4567	2867
85	5618	4850	1551



Utilization of Lumens - Zonal Cavity Method

Effective Floor Cavity Reflectance 20%																		
Ceiling Cavity Reflectance	80				70				50			30			10			0
Wall Reflectance	70	50	30	10	70	50	30	10	50	30	10	50	30	10	50	30	10	0
Room Cavity Ratio (RCR)	** Values are expressed as Lumens delivered to the task surface **																	
0	2493	2493	2493	2493	2294	2294	2294	2294	1922	1922	1922	1581	1581	1581	1269	1269	1269	1122
1	2221	2097	1985	1885	2032	1925	1828	1741	1604	1531	1465	1308	1255	1207	1036	998	964	833
2	2000	1800	1635	1496	1825	1652	1508	1385	1374	1265	1171	1118	1037	966	880	822	770	656
3	1812	1565	1373	1221	1650	1436	1268	1132	1194	1066	960	970	874	793	763	692	632	531
4	1649	1373	1171	1017	1501	1261	1082	944	1050	912	802	854	749	664	671	594	530	440
5	1508	1215	1011	860	1373	1117	935	799	932	790	681	760	651	565	599	517	452	372
6	1385	1084	882	737	1261	998	817	686	834	692	586	682	572	488	539	456	392	320
7	1277	974	777	640	1165	898	721	596	753	612	510	617	508	426	489	406	343	279
8	1183	881	691	560	1079	813	642	523	683	546	449	562	454	376	447	365	304	246
9	1099	801	618	495	1004	740	575	462	624	491	398	515	410	334	412	331	271	219
10	1025	732	557	440	938	678	519	412	573	444	355	474	372	299	381	301	244	196

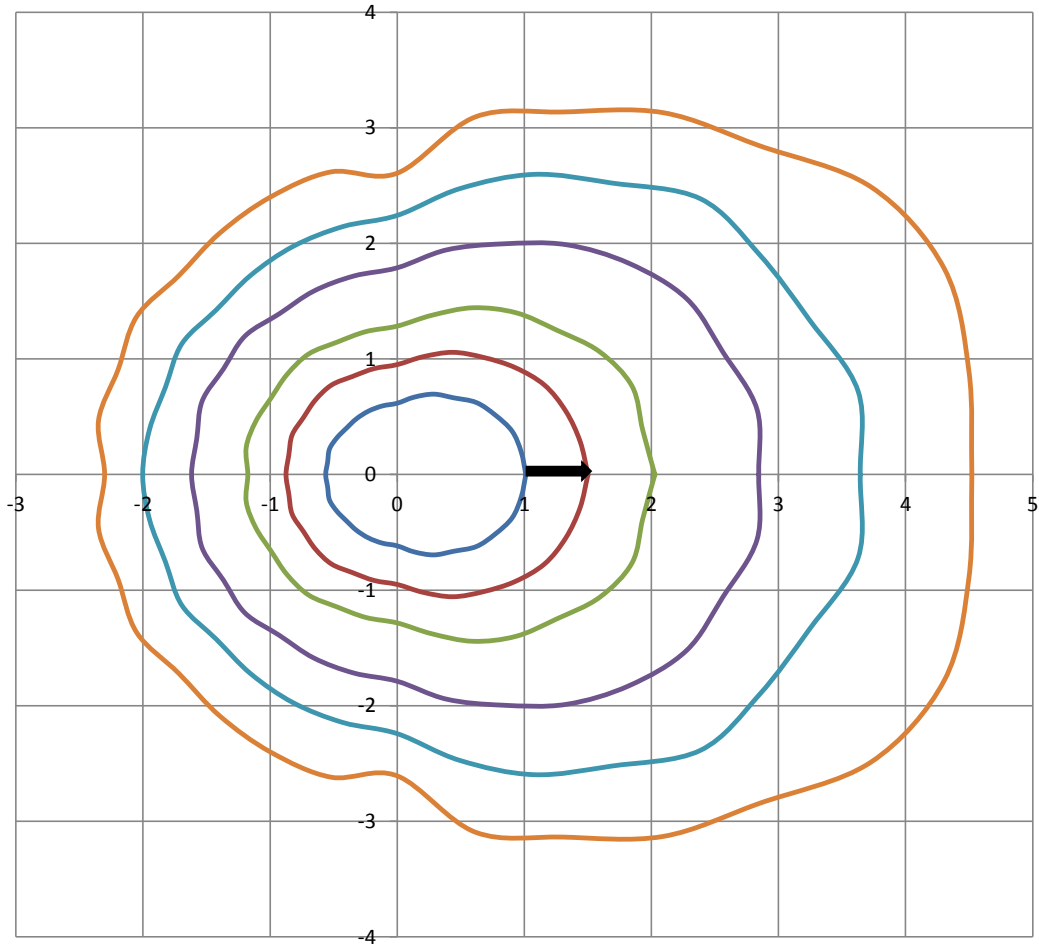
Beam and Field Information	
CIE Type:	Direct/Indirect
Center Beam Intensity:	254.9 Candela
Central Cone Intensity:	255 Candela
Beam Flux:	2090.4 Lumens
Beam Angle (0-180):	#REF! Degrees
Beam Angle (90-270):	112.1 Degrees
Field Angle (0-180):	#REF! Degrees
Field Angle (90-270):	163.8 Degrees





ISOFootcandle Plot

Mounting Height - 8 Feet



Grid Lines in Units of Mounting Height

