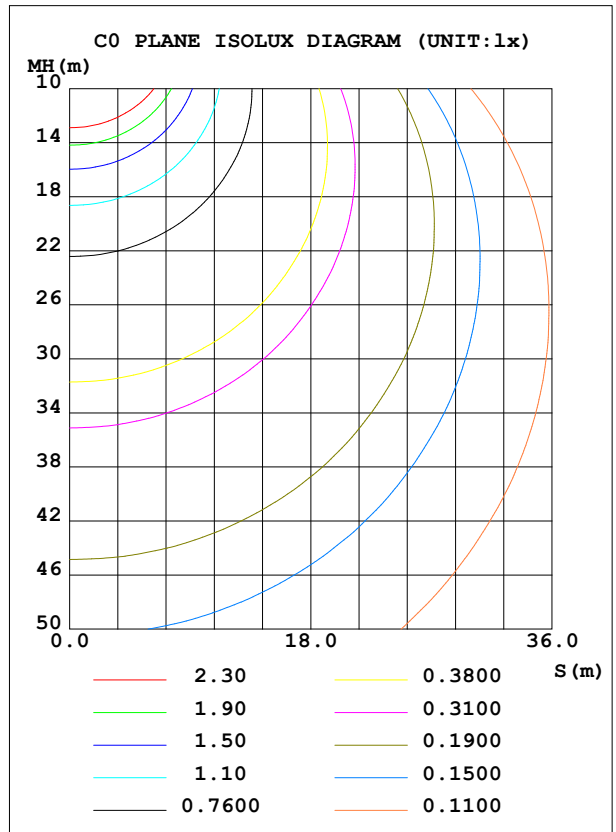
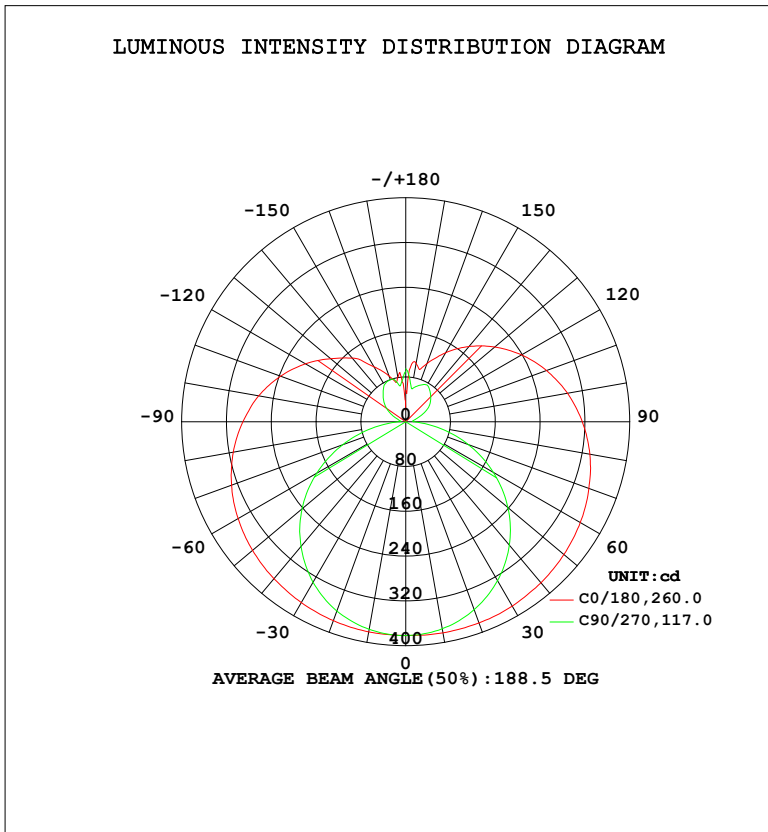


LUMINAIRE PHOTOMETRIC TEST REPORT

Test:U:120.15V I:0.3075A P:33.910W PF:0.9177 Freq:60.01Hz		
Lamp Flux:2611.53x1 lm		
NAME:	TYPE:	WEIGHT:
SPEC.:	DIM.:	SERIAL No.:
MFR.:	SUR.:	Shielding Angle:

DATA OF LAMP		PHOTOMETRIC DATA			
MODEL		Imax (cd)	382.8	S/MH (C0/180)	1.49
NOMINAL POWER (W)		LOR (%)	100.0	S/MH (C90/270)	1.29
RATED VOLTAGE (V)		TOTAL FLUX (lm)	2611.5	η UP, DN (C0-180)	16.7, 33.5
NOMINAL FLUX (lm)	2611.53	CIE CLASS	SEMI-D.	η UP, DN (C180-360)	16.3, 33.5
LAMPS INSIDE	1	η up (%)	33.0	CIBSE SHR NOM	1.50
TEST VOLTAGE (V)		η down (%)	67.0	CIBSE SHR MAX	1.55



C Range: 0 - 360DEG
 C Interval: 22.5DEG
 Test Speed: HIGH
 Temperature: 25.2°C
 Operators: Dano
 Test Date: 2022-12-19

γ Range: 0 - 180DEG
 γ Interval: 1.0DEG
 Test System: EVERFINE GO-R5000_V2 SYSTEM V2.00.459
 Humidity: 55.3%
 Test Distance: 2.900m [K=0.8810]
 Remarks:

ZONAL FLUX DIAGRAM

ZONAL FLUX DIAGRAM:

γ	C0	C45	C90	C135	C180	C225	C270	C315	γ	Φ zone	Φ total	%lum, lamp
10	382.8	379.3	375.3	376.5	381.0	379.0	376.3	378.9	0- 10	36.29	36.29	1.39,1.39
20	382.2	371.5	357.2	365.3	377.9	370.6	359.7	369.4	10- 20	106.0	142.3	5.45,5.45
30	380.1	358.9	327.9	347.0	372.8	356.4	330.9	353.3	20- 30	167.2	309.5	11.9,11.9
40	375.6	342.1	287.7	322.3	366.2	337.8	290.7	331.9	30- 40	215.2	524.7	20.1,20.1
50	368.7	321.5	238.2	294.0	357.1	315.8	241.4	305.6	40- 50	246.7	771.4	29.5,29.5
60	359.9	299.0	180.6	263.8	345.6	291.8	183.4	277.3	50- 60	260.4	1032	39.5,39.5
70	348.1	276.9	118.8	233.9	331.0	268.1	119.6	249.6	60- 70	257.6	1289	49.4,49.4
80	333.8	255.7	57.27	205.1	312.6	243.0	55.89	224.3	70- 80	241.5	1531	58.6,58.6
90	315.2	235.0	14.13	180.1	290.8	218.7	11.34	202.2	80- 90	217.8	1749	67,67
100	293.3	215.4	13.96	158.2	266.7	195.3	10.55	183.9	90-100	194.6	1943	74.4,74.4
110	267.6	196.1	25.30	138.4	238.1	172.0	17.39	166.5	100-110	171.1	2114	81,81
120	238.9	175.1	44.01	121.9	207.0	149.4	33.54	147.0	110-120	145.9	2260	86.6,86.6
130	207.8	150.8	57.91	110.5	175.2	131.2	49.48	133.6	120-130	119.3	2380	91.1,91.1
140	175.5	132.1	68.26	92.32	148.5	110.4	62.96	117.8	130-140	92.38	2472	94.7,94.7
150	142.4	114.8	75.95	78.86	113.4	95.97	76.46	100.8	140-150	66.57	2539	97.2,97.2
160	110.5	96.18	69.04	69.15	87.09	81.69	80.06	89.85	150-160	43.02	2582	98.9,98.9
170	106.3	68.76	60.37	78.10	81.26	83.45	65.39	67.93	160-170	22.61	2604	99.7,99.7
180	55.98	80.16	95.11	84.09	21.66	69.11	89.59	91.53	170-180	7.330	2612	100,100
DEG	LUMINOUS INTENSITY:cd									UNIT:lm		

Conical surface Flux(60deg): 309.5 lm

%lum = 11.9%

%lamp = 11.9%

Conical surface Flux(120deg): 1031.8 lm

%lum = 39.5%

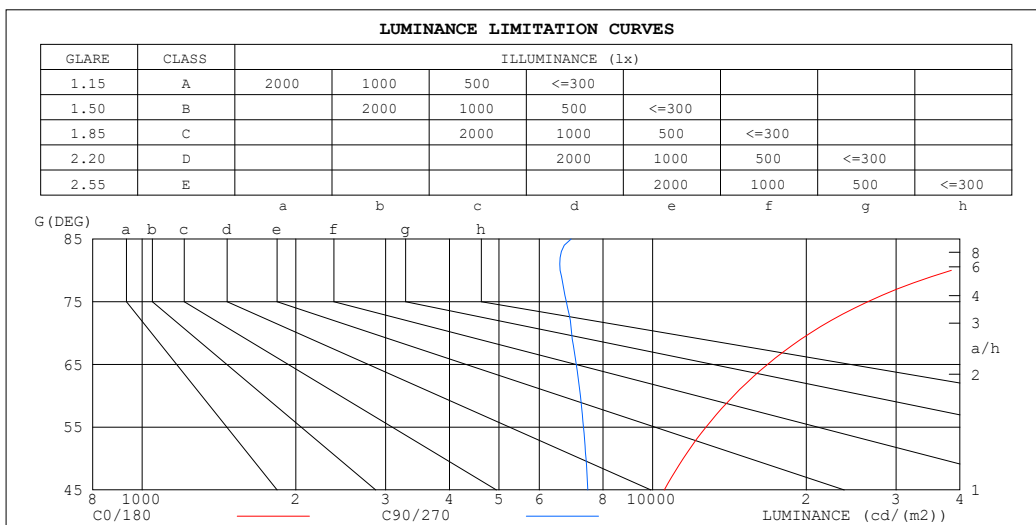
%lamp = 39.5%

C Range: 0 - 360DEG
C Interval: 22.5DEG
Test Speed: HIGH
Temperature:25.2°C
Operators:Dano
Test Date:2022-12-19

γ Range: 0 - 180DEG
 γ Interval: 1.0DEG
Test System:EVERFINE GO-R5000_V2 SYSTEM V2.00.459
Humidity:55.3%
Test Distance:2.900m [K=0.8810]
Remarks:

LUMINANCE LIMITATION CURVES

Test:U:120.15V I:0.3075A P:33.910W PF:0.9177 Freq:60.01Hz Lamp Flux:2611.53x1 lm		
NAME:	TYPE:	WEIGHT:
SPEC.:	DIM.:	SERIAL No.:
MFR.:	SUR.:	Shielding Angle:



LUMINANCE cd/(m2)		
G (DEG)	C0/180	C90/270
85	74632	6928
80	38488	6592
75	26406	6778
70	20376	6943
65	16794	7091
60	14410	7222
55	12726	7324
50	11484	7408
45	10546	7468

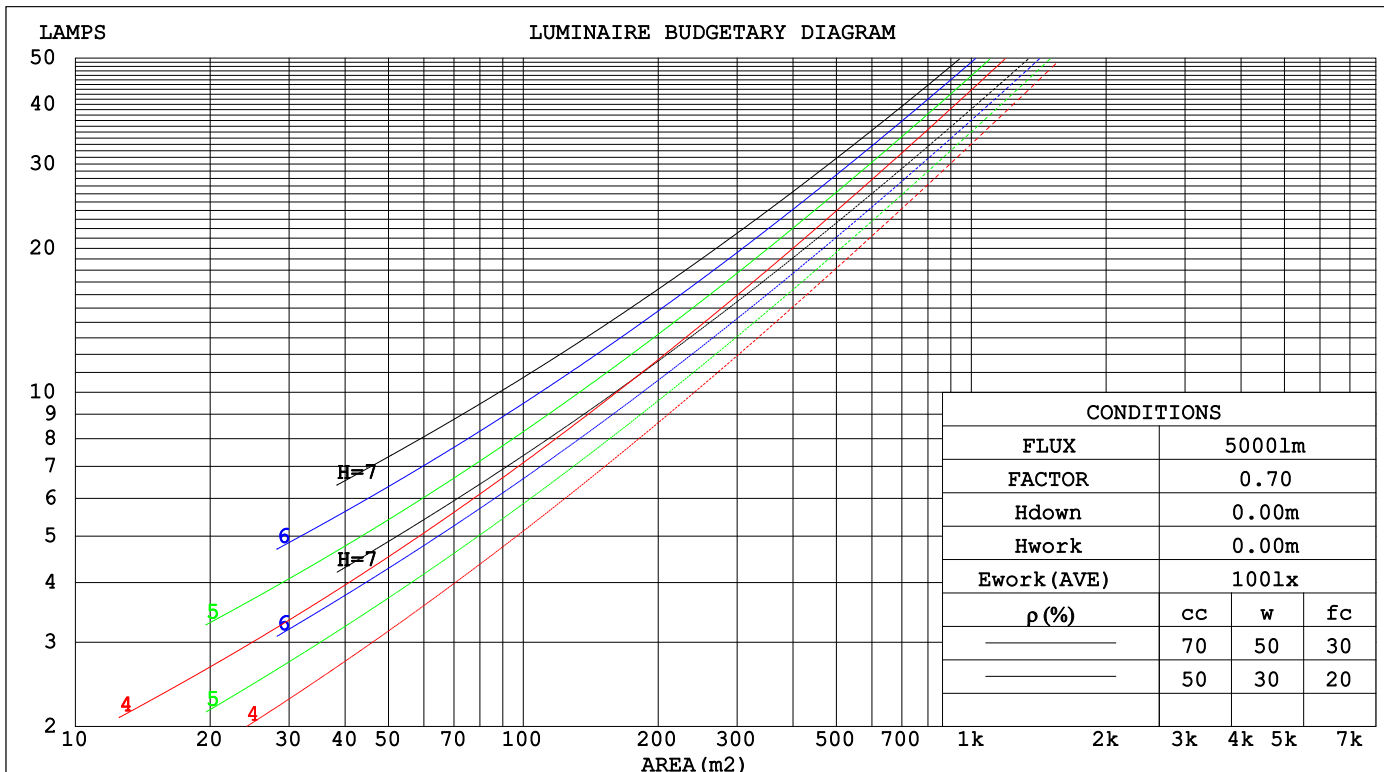
C Range: 0 - 360DEG
 C Interval: 22.5DEG
 Test Speed: HIGH
 Temperature:25.2°C
 Operators:Dano
 Test Date:2022-12-19

γ Range: 0 - 180DEG
 γ Interval: 1.0DEG
 Test System:EVERFINE GO-R5000_V2 SYSTEM V2.00.459
 Humidity:55.3%
 Test Distance:2.900m [K=0.8810]
 Remarks:

CU AND LUMINAIRE BUDGETARY ESTIMATE DIAGRAM

Test:U:120.15V I:0.3075A P:33.910W PF:0.9177 Freq:60.01Hz		
Lamp Flux:2611.53x1 lm		
NAME:	TYPE:	WEIGHT:
SPEC.:	DIM.:	SERIAL No.:
MFR.:	SUR.:	Shielding Angle:

pcc	80%			70%			50%			30%			10%			0
pw	50%	30%	10%	50%	30%	10%	50%	30%	10%	50%	30%	10%	50%	30%	10%	0
pf _c	20%			20%			20%			20%			20%			0
RCR	RCR:Room Cavity Ratio						Coefficients of Utilization(CU)									
0.0	1.11	1.11	1.11	1.05	1.05	1.05	.93	.93	.93	.82	.82	.82	.72	.72	.72	.67
1.0	.92	.86	.81	.86	.81	.77	.76	.72	.68	.66	.63	.60	.57	.55	.53	.48
2.0	.78	.70	.63	.73	.66	.60	.64	.58	.54	.56	.51	.47	.48	.45	.42	.38
3.0	.67	.58	.51	.63	.55	.48	.55	.49	.43	.48	.43	.39	.42	.37	.34	.30
4.0	.59	.49	.42	.55	.47	.40	.49	.42	.36	.42	.37	.32	.36	.32	.28	.25
5.0	.52	.43	.36	.49	.40	.34	.43	.36	.31	.38	.32	.27	.33	.28	.24	.21
6.0	.46	.37	.31	.44	.35	.29	.39	.32	.26	.34	.28	.23	.29	.24	.21	.18
7.0	.42	.33	.27	.39	.31	.25	.35	.28	.23	.31	.25	.21	.27	.22	.18	.16
8.0	.38	.29	.23	.36	.28	.22	.32	.25	.20	.28	.22	.18	.24	.20	.16	.14
9.0	.35	.26	.21	.33	.25	.20	.29	.22	.18	.26	.20	.16	.22	.18	.14	.12
10.0	.32	.24	.18	.30	.23	.18	.27	.20	.16	.24	.18	.15	.21	.16	.13	.11



C Range: 0 - 360DEG
 C Interval: 22.5DEG
 Test Speed: HIGH
 Temperature:25.2°C
 Operators:Dano
 Test Date:2022-12-19

γ Range: 0 - 180DEG
 γ Interval: 1.0DEG
 Test System:EVERFINE GO-R5000_V2 SYSTEM V2.00.459
 Humidity:55.3%
 Test Distance:2.900m [K=0.8810]
 Remarks:

WEC AND CCEC

Test:U:120.15V I:0.3075A P:33.910W PF:0.9177 Freq:60.01Hz		
Lamp Flux:2611.53x1 lm		
NAME:	TYPE:	WEIGHT:
SPEC.:	DIM.:	SERIAL No.:
MFR.:	SUR.:	Shielding Angle:

ρ _{cc}	80%			70%			50%			30%			10%			0
ρ _w	50%	30%	10%	50%	30%	10%	50%	30%	10%	50%	30%	10%	50%	30%	10%	0
ρ _{fc}	20%			20%			20%			20%			20%			0
RCR	RCR:Room Cavity Ratio						Wall Exitance Coefficients(WEC)									
0.0																
1.0	.395	.224	.071	.377	.215	.068	.345	.198	.063	.315	.182	.058	.288	.167	.054	
2.0	.336	.184	.056	.320	.176	.054	.291	.162	.050	.264	.148	.046	.239	.135	.043	
3.0	.296	.158	.047	.282	.151	.045	.255	.138	.042	.230	.126	.039	.207	.115	.035	
4.0	.265	.138	.041	.252	.132	.039	.228	.121	.036	.205	.110	.033	.184	.100	.030	
5.0	.240	.122	.035	.228	.117	.034	.206	.107	.032	.185	.098	.029	.166	.088	.027	
6.0	.220	.110	.032	.209	.105	.030	.188	.096	.028	.169	.088	.026	.151	.079	.024	
7.0	.202	.100	.028	.192	.096	.027	.173	.088	.025	.155	.080	.023	.139	.072	.021	
8.0	.187	.092	.026	.178	.088	.025	.161	.080	.023	.144	.073	.021	.129	.066	.019	
9.0	.174	.084	.024	.166	.081	.023	.150	.074	.021	.134	.067	.019	.120	.061	.018	
10.0	.163	.078	.022	.155	.075	.021	.140	.069	.019	.126	.062	.018	.112	.056	.016	

ρ _{cc}	80%			70%			50%			30%			10%			0
ρ _w	50%	30%	10%	50%	30%	10%	50%	30%	10%	50%	30%	10%	50%	30%	10%	0
ρ _{fc}	20%			20%			20%			20%			20%			0
RCR	RCR:Room Cavity Ratio						Ceiling Cavity Exitance Coefficients(CCEC)									
0.0	.442	.442	.442	.378	.378	.378	.258	.258	.258	.148	.148	.148	.047	.047	.047	
1.0	.440	.409	.381	.376	.351	.328	.258	.242	.227	.148	.140	.132	.047	.045	.043	
2.0	.434	.387	.348	.371	.333	.301	.255	.231	.210	.147	.134	.123	.047	.043	.040	
3.0	.426	.371	.327	.366	.320	.284	.251	.223	.199	.145	.130	.117	.047	.042	.038	
4.0	.419	.359	.314	.359	.311	.273	.247	.216	.192	.143	.127	.114	.046	.041	.037	
5.0	.411	.350	.305	.353	.303	.265	.243	.211	.187	.141	.124	.111	.045	.041	.037	
6.0	.404	.342	.298	.347	.296	.259	.240	.207	.184	.139	.122	.109	.045	.040	.036	
7.0	.397	.336	.293	.342	.291	.255	.236	.204	.181	.137	.120	.108	.044	.039	.036	
8.0	.390	.331	.289	.336	.287	.252	.233	.201	.179	.135	.119	.107	.044	.039	.035	
9.0	.384	.326	.286	.331	.283	.250	.229	.199	.177	.134	.117	.106	.043	.039	.035	
10.0	.379	.322	.284	.326	.280	.248	.226	.197	.176	.132	.116	.105	.043	.038	.035	

C Range: 0 - 360DEG
 C Interval: 22.5DEG
 Test Speed: HIGH
 Temperature:25.2°C
 Operators:Dano
 Test Date:2022-12-19

γ Range: 0 - 180DEG
 γ Interval: 1.0DEG
 Test System:EVERFINE GO-R5000_V2 SYSTEM V2.00.459
 Humidity:55.3%
 Test Distance:2.900m [K=0.8810]
 Remarks:

UGR(Unified Glare Rating) Table

Test:U:120.15V I:0.3075A P:33.910W PF:0.9177 Freq:60.01Hz Lamp Flux:2611.53x1 lm												
NAME:		TYPE:				WEIGHT:						
SPEC.:		DIM.:				SERIAL No.:						
MFR.:		SUR.:				Shielding Angle:						
ceiling/cavity		0.7	0.7	0.5	0.5	0.3	0.7	0.7	0.5	0.5	0.3	
walls		0.5	0.3	0.5	0.3	0.3	0.5	0.3	0.5	0.3	0.3	
working plane		0.2	0.2	0.2	0.2	0.2	0.2	0.2	0.2	0.2	0.2	
Room dimensions		Viewed crosswise					Viewed endwise					
x = 2H y = 2H		20.3	21.6	21.0	22.3	23.1	17.6	18.9	18.3	19.6	20.4	
	3H	23.5	24.6	24.2	25.3	26.2	19.4	20.5	20.1	21.2	22.1	
	4H	25.2	26.3	25.9	27.0	27.9	20.2	21.2	20.9	22.0	22.9	
	6H	27.1	28.1	27.9	28.9	29.8	20.8	21.8	21.6	22.6	23.5	
	8H	28.2	29.2	29.0	30.0	30.9	21.1	22.1	21.9	22.8	23.8	
	12H	29.5	30.4	30.2	31.2	32.1	21.3	22.2	22.1	23.0	24.0	
	4H	2H	21.0	22.0	21.7	22.8	23.7	19.1	20.2	19.9	20.9	21.8
		3H	24.3	25.2	25.1	26.0	27.0	21.2	22.1	22.0	22.9	23.9
		4H	26.3	27.1	27.1	27.9	28.9	22.2	23.1	23.0	23.9	24.8
		6H	28.4	29.2	29.2	30.0	31.0	23.1	23.9	23.9	24.7	25.7
		8H	29.6	30.3	30.4	31.2	32.2	23.5	24.2	24.3	25.0	26.1
		12H	31.0	31.6	31.8	32.5	33.5	23.8	24.5	24.6	25.3	26.4
	8H	4H	26.7	27.4	27.5	28.2	29.2	23.7	24.4	24.5	25.2	26.2
		6H	29.2	29.8	30.0	30.6	31.7	25.0	25.6	25.9	26.5	27.6
		8H	30.6	31.1	31.5	32.0	33.1	25.7	26.2	26.6	27.1	28.2
		12H	32.2	32.7	33.1	33.6	34.7	26.3	26.8	27.2	27.6	28.7
	12H	4H	26.7	27.4	27.5	28.2	29.3	24.1	24.8	25.0	25.7	26.7
		6H	29.3	29.9	30.2	30.7	31.8	25.8	26.3	26.7	27.2	28.3
		8H	30.9	31.3	31.7	32.2	33.3	26.7	27.2	27.6	28.0	29.1
Variations with the observer position at spacings(CIE Pub.117):												
S = 1.0H		+ 0.1 / - 0.1					+ 0.1 / - 0.1					
1.5H		+ 0.2 / - 0.3					+ 0.2 / - 0.3					
2.0H		+ 0.3 / - 0.4					+ 0.3 / - 0.4					

CIE Pub.117, 2612 lm Total Lamp Luminous Flux Corrected ($8\log(F/F_0) = 3.3$)
Area: 0.05 m²

C Range: 0 - 360DEG
C Interval: 22.5DEG
Test Speed: HIGH
Temperature:25.2°C
Operators:Dano
Test Date:2022-12-19

γ Range: 0 - 180DEG
 γ Interval: 1.0DEG
Test System:EVERFINE GO-R5000_V2 SYSTEM V2.00.459
Humidity:55.3%
Test Distance:2.900m [K=0.8810]
Remarks:

UTILIZATION FACTORS TABLE

Test:U:120.15V I:0.3075A P:33.910W PF:0.9177 Freq:60.01Hz Lamp Flux:2611.53x1 lm		
NAME:	TYPE:	WEIGHT:
SPEC.:	DIM.:	SERIAL No.:
MFR.:	SUR.:	Shielding Angle:

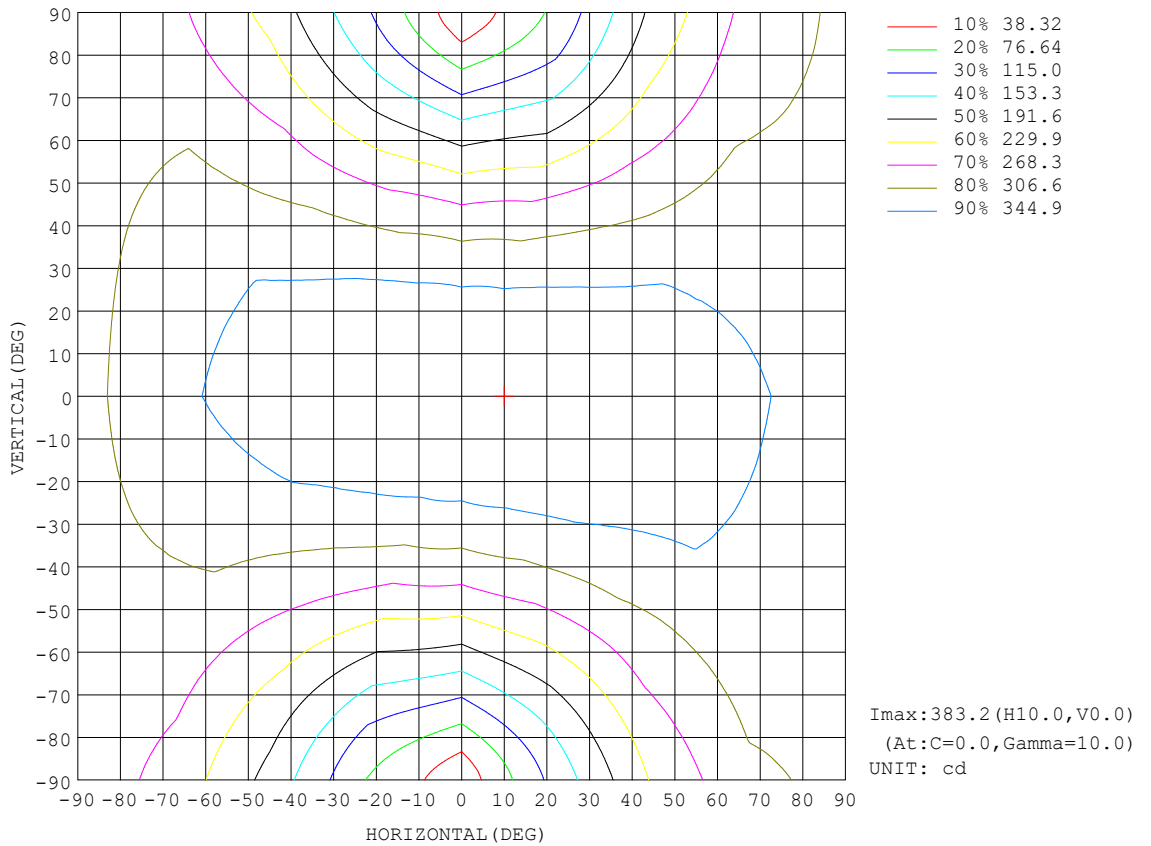
REFLECTANCE										
Ceiling	0.8	0.8	0.8	0.7	0.7	0.7	0.5	0.5	0.5	0
Walls	0.7	0.5	0.3	0.7	0.5	0.3	0.7	0.5	0.3	0
Working plane	0.2	0.2	0.2	0.2	0.2	0.2	0.2	0.2	0.2	0
ROOM INDEX	UTILIZATION FACTORS (PERCENT) $k(RI) \times RCR = 5$									
k = 0.60	42	30	23	41	29	22	38	28	21	14
0.80	51	38	30	49	37	29	45	35	28	19
1.00	59	45	37	56	44	36	51	43	34	24
1.25	66	52	43	62	50	42	57	47	39	28
1.50	71	58	49	67	55	47	61	51	44	31
2.00	78	66	57	74	63	55	66	58	51	36
2.50	83	72	63	78	69	61	70	62	56	40
3.00	87	77	69	82	73	66	73	66	60	43
4.00	92	83	76	87	79	72	77	71	66	47
5.00	95	87	81	90	83	77	79	74	70	50
ROOM INDEX	UF(total)									Direct
According to DIN EN 13032-2 2004			Suspended				SHRNOM = 1.25			

C Range: 0 - 360DEG
 C Interval: 22.5DEG
 Test Speed: HIGH
 Temperature:25.2°C
 Operators:Dano
 Test Date:2022-12-19

γ Range: 0 - 180DEG
 γ Interval: 1.0DEG
 Test System:EVERFINE GO-R5000_V2 SYSTEM V2.00.459
 Humidity:55.3%
 Test Distance:2.900m [K=0.8810]
 Remarks:

ISOCANDELA DIAGRAM

Test:U:120.15V I:0.3075A P:33.910W PF:0.9177 Freq:60.01Hz Lamp Flux:2611.53x1 lm		
NAME:	TYPE:	WEIGHT:
SPEC.:	DIM.:	SERIAL No.:
MFR.:	SUR.:	Shielding Angle:



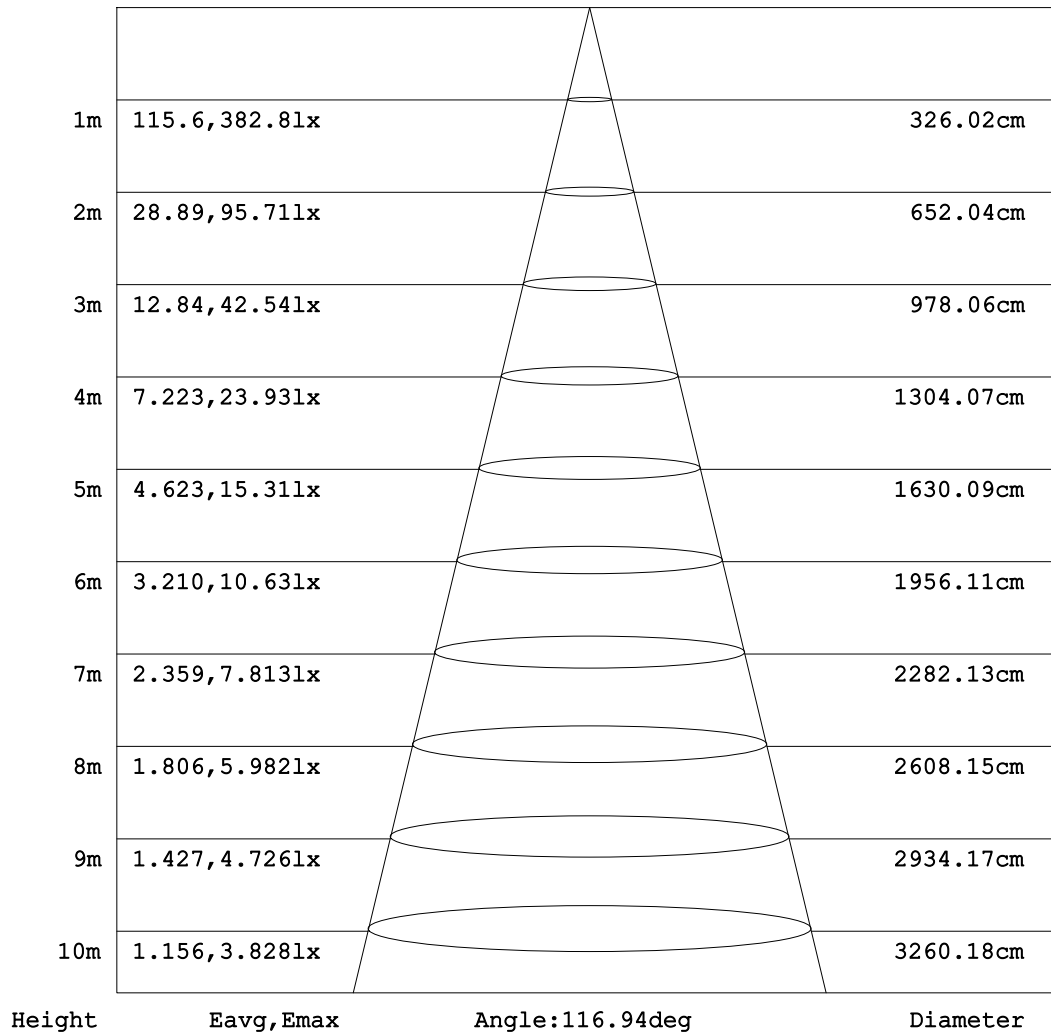
C Range: 0 - 360DEG
C Interval: 22.5DEG
Test Speed: HIGH
Temperature:25.2°C
Operators:Dano
Test Date:2022-12-19

γ Range: 0 - 180DEG
γ Interval: 1.0DEG
Test System:EVERFINE GO-R5000_V2 SYSTEM V2.00.459
Humidity:55.3%
Test Distance:2.900m [K=0.8810]
Remarks:

AAI Figure

Test:U:120.15V I:0.3075A P:33.910W PF:0.9177 Freq:60.01Hz Lamp Flux:2611.53x1 lm		
NAME:	TYPE:	WEIGHT:
SPEC.:	DIM.:	SERIAL No.:
MFR.:	SUR.:	Shielding Angle:

Flux out:1006 lm



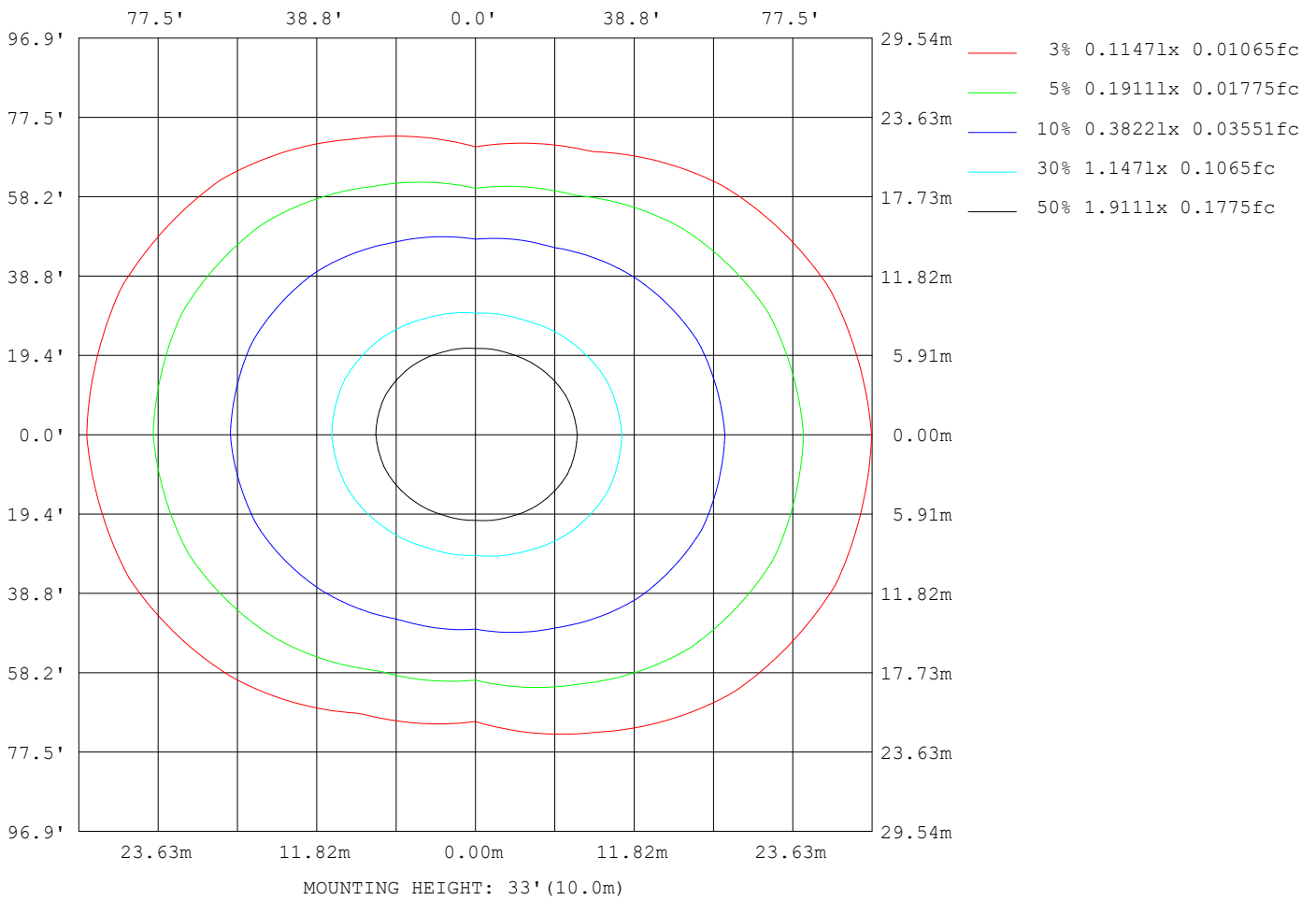
Note: The Curves indicate the illuminated area and the average illumination when the luminaire is at different distance.

C Range: 0 - 360DEG
 C Interval: 22.5DEG
 Test Speed: HIGH
 Temperature: 25.2°C
 Operators: Dano
 Test Date: 2022-12-19

γ Range: 0 - 180DEG
 γ Interval: 1.0DEG
 Test System: EVERFINE GO-R5000_V2 SYSTEM V2.00.459
 Humidity: 55.3%
 Test Distance: 2.900m [K=0.8810]
 Remarks:

ISOLUX DIAGRAM

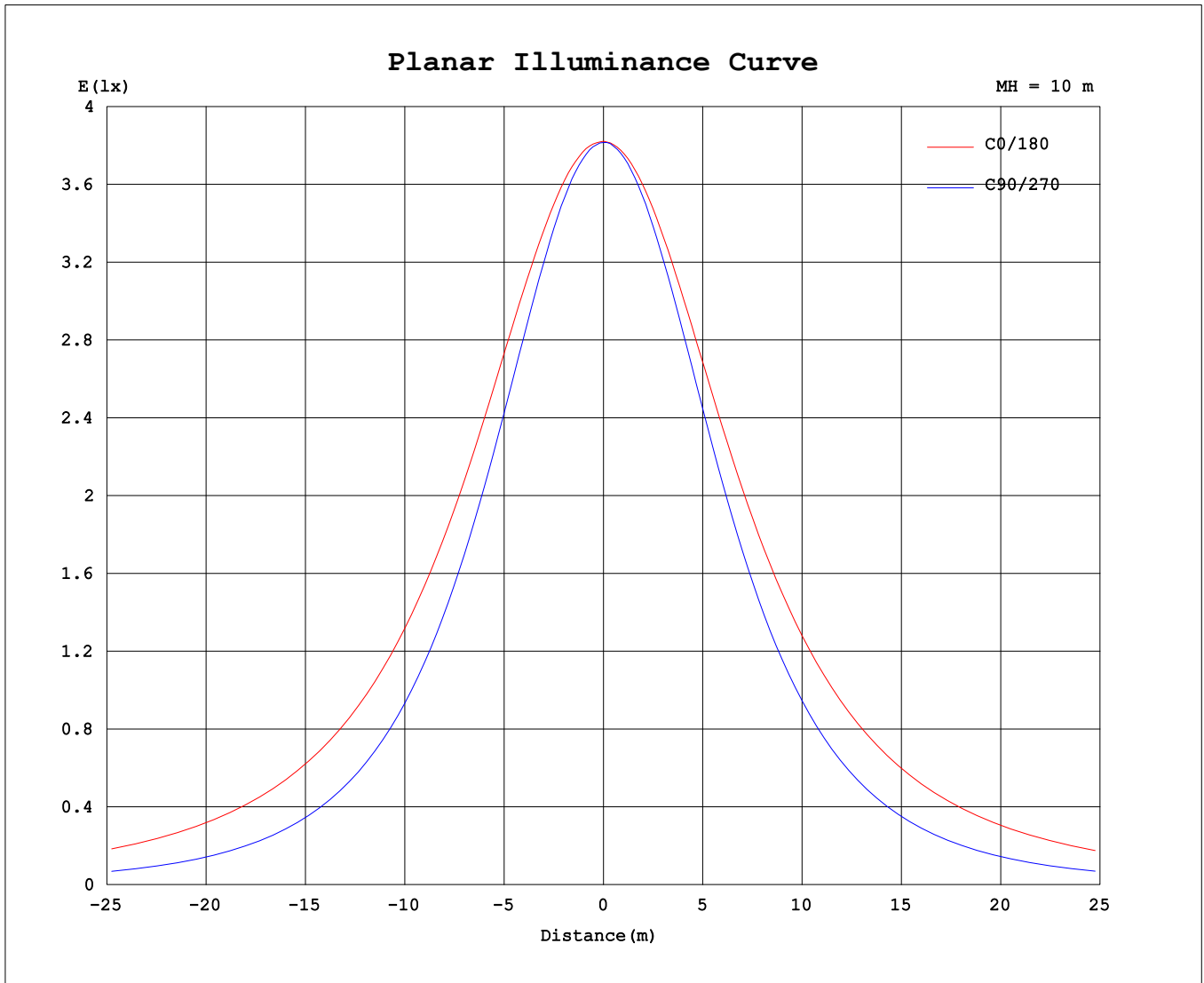
Test:U:120.15V I:0.3075A P:33.910W PF:0.9177 Freq:60.01Hz Lamp Flux:2611.53x1 lm		
NAME:	TYPE:	WEIGHT:
SPEC.:	DIM.:	SERIAL No.:
MFR.:	SUR.:	Shielding Angle:



C Range: 0 - 360DEG
 C Interval: 22.5DEG
 Test Speed: HIGH
 Temperature:25.2°C
 Operators:Dano
 Test Date:2022-12-19

γ Range: 0 - 180DEG
 γ Interval: 1.0DEG
 Test System:EVERFINE GO-R5000_V2 SYSTEM V2.00.459
 Humidity:55.3%
 Test Distance:2.900m [K=0.8810]
 Remarks:

Planar Illuminance Curve



C Range: 0 - 360DEG
C Interval: 22.5DEG
Test Speed: HIGH
Temperature: 25.2°C
Operators: Dano
Test Date: 2022-12-19

γ Range: 0 - 180DEG
γ Interval: 1.0DEG
Test System: EVERFINE GO-R5000_V2 SYSTEM V2.00.459
Humidity: 55.3%
Test Distance: 2.900m [K=0.8810]
Remarks:

LUMINOUS DISTRIBUTION INTENSITY DATA

Test:U:120.15V I:0.3075A P:33.910W PF:0.9177 Freq:60.01Hz		
Lamp Flux:2611.53x1 lm		
NAME:	TYPE:	WEIGHT:
SPEC.:	DIM.:	SERIAL No.:
MFR.:	SUR.:	Shielding Angle:

Table--1

UNIT: cd

C (DEG) \ γ (DEG)	0	22.5	45	67.5	90	112.5	135	157.5	180	202.5	225	247.5	270	292.5	315	337.5			
0	382	382	382	382	382	382	382	382	382	382	382	382	382	382	382	382			
5	382	382	381	381	380	380	380	381	381	381	381	381	381	381	381	381			
10	383	381	379	377	375	375	376	379	381	380	379	378	376	377	379	381			
15	383	380	376	371	368	368	372	377	380	378	376	372	369	371	375	380			
20	382	379	371	362	357	359	365	373	378	376	371	364	360	361	369	378			
25	381	377	366	352	344	346	357	369	376	373	364	353	347	350	362	375			
30	380	375	359	339	328	332	347	364	373	369	356	340	331	337	353	372			
35	378	372	351	325	309	315	336	358	370	365	348	325	312	320	344	367			
40	376	368	342	308	288	295	322	351	366	360	338	308	291	301	332	362			
45	372	363	332	291	264	273	308	344	362	354	327	290	268	281	319	356			
50	369	358	322	272	238	251	294	336	357	348	316	271	241	259	306	349			
55	365	353	310	251	210	226	279	328	352	342	304	250	214	234	291	342			
60	360	347	299	231	181	201	264	319	346	334	292	229	183	209	277	335			
65	354	340	287	210	150	176	249	310	339	326	280	207	152	184	263	327			
70	348	334	277	190	119	151	234	300	331	318	268	186	120	159	250	319			
75	341	326	266	172	87.8	127	219	290	322	309	256	167	87.3	135	237	310			
80	334	318	256	156	57.3	107	205	279	313	299	243	149	55.9	115	224	301			
85	325	309	245	143	30.2	89.7	192	268	302	288	231	134	28.5	98.5	213	292			
90	315	299	235	132	14.1	76.6	180	256	291	277	219	121	11.3	86.7	202	282			
95	305	288	225	124	12.7	67.5	169	244	279	265	207	111	8.65	79.6	193	273			
100	293	278	215	118	14.0	60.9	158	232	267	252	195	102	10.6	74.4	184	262			
105	281	266	206	111	18.8	56.7	148	218	253	238	183	95.0	13.3	70.0	175	251			
110	268	253	196	104	25.3	55.5	138	205	238	224	172	89.1	17.4	70.7	167	239			
115	254	240	186	99.8	34.6	53.9	129	192	223	210	161	85.5	25.3	71.4	157	227			
120	239	226	175	98.6	44.0	54.0	122	178	207	195	149	83.9	33.5	72.5	147	213			
125	223	212	163	96.9	52.0	54.5	116	164	191	180	139	78.0	41.9	74.3	139	198			
130	208	197	151	95.7	57.9	54.7	110	152	175	166	131	75.1	49.5	76.2	134	183			
135	192	181	140	94.3	63.2	54.5	99.2	141	161	153	124	73.4	56.5	77.1	126	168			
140	175	164	132	93.6	68.3	53.9	92.3	130	149	142	110	72.0	63.0	77.9	118	154			
145	159	148	124	91.5	72.9	59.5	85.6	113	131	125	102	71.6	70.1	86.3	109	141			
150	142	132	115	89.1	76.0	67.5	78.9	102	113	111	96.0	71.6	76.5	92.9	101	126			
155	125	120	106	93.2	73.3	73.7	72.4	90.3	100	99.0	89.4	71.2	79.2	82.6	94.0	112			
160	110	108	96.2	86.0	69.0	75.5	69.2	79.2	87.1	86.9	81.7	70.6	80.1	72.7	89.8	99.1			
165	96.6	98.4	89.4	74.4	64.4	63.0	80.1	71.2	74.8	74.7	72.3	79.5	77.6	68.8	76.4	89.8			
170	106	102	68.8	66.3	60.4	58.4	78.1	83.4	81.3	80.7	83.4	82.3	65.4	62.5	67.9	74.3			
175	97.8	55.1	74.3	78.9	78.7	76.2	76.8	77.8	71.1	71.5	81.9	76.6	73.8	77.7	76.3	75.4			
180	56.0	61.5	80.2	91.6	95.1	93.4	84.1	75.2	21.7	20.6	69.1	80.9	89.6	92.9	91.5	84.0			

C Range: 0 - 360DEG
 C Interval: 22.5DEG
 Test Speed: HIGH
 Temperature:25.2°C
 Operators:Dano
 Test Date:2022-12-19

γ Range: 0 - 180DEG
 γ Interval: 1.0DEG
 Test System:EVERFINE GO-R5000_V2 SYSTEM V2.00.459
 Humidity:55.3%
 Test Distance:2.900m [K=0.8810]
 Remarks: