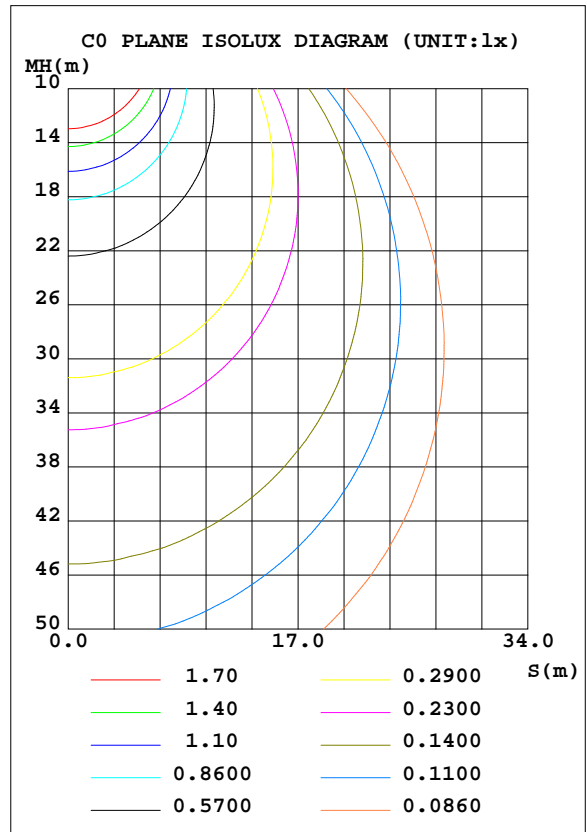
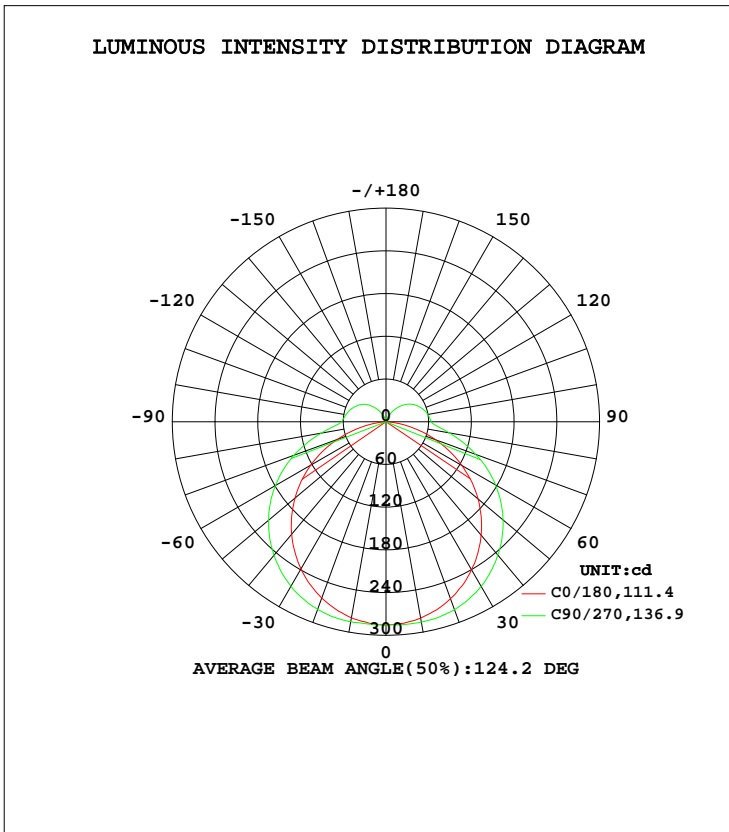


LUMINAIRE PHOTOMETRIC TEST REPORT

Test:U:120.08V I:0.1231A P:14.550W PF:0.9843 Freq:60.00Hz Lamp Flux:1117.44x1 lm		
NAME: LED Luminaire	TYPE: N/A	WEIGHT: N/A
SPEC.: N/A	DIM.: N/A	SERIAL No.: N/A
	SUR.: N/A	Shielding Angle: N/A

DATA OF LAMP		PHOTOMETRIC DATA Eff: 76.80 lm/W			
MODEL	PRE-2402A32610E-S01	I _{max} (cd)	285.9	S/MH(C0/180)	1.25
NOMINAL POWER(W)		LOR(%)	100.0	S/MH(C90/270)	1.39
RATED VOLTAGE(V)	120	TOTAL FLUX(lm)	1117.4	η UP, DN(C0-180)	6.3,43.6
NOMINAL FLUX(lm)	1117.44	CIE CLASS	SEMI-D.	η UP, DN(C180-360)	6.4,43.7
LAMPS INSIDE	1	η up(%)	12.8	CIBSE SHR NOM	1.50
TEST VOLTAGE(V)	120	η down(%)	87.2	CIBSE SHR MAX	1.55



C Range: 0 - 360DEG
 C Interval: 22.5DEG
 Test Speed: HIGH
 Temperature:24.1DEG
 Operators:Hill
 Test Date:2024-12-21

γ Range: 0 - 180DEG
 γ Interval: 1.0DEG
 Test System:EVERFINE GO-R5000_V2 SYSTEM V2.00.446
 Humidity:44%
 Test Distance:2.519m [K=1.0000]
 Remarks:

ZONAL FLUX DIAGRAM

ZONAL FLUX DIAGRAM:

γ	C0	C45	C90	C135	C180	C225	C270	C315	γ	Φ zone	Φ total	%lum, lamp
10	279.6	281.8	285.2	282.4	280.0	283.1	285.8	282.8	0- 10	27.11	27.11	2.43,2.43
20	263.6	271.9	280.3	273.2	264.7	274.1	281.1	274.3	10- 20	78.81	105.9	9.48,9.48
30	238.8	254.4	266.7	256.5	240.2	256.9	267.0	256.8	20- 30	122.2	228.1	20.4,20.4
40	206.2	228.2	244.8	231.1	207.9	230.8	244.3	231.3	30- 40	151.8	380.0	34,34
50	166.8	195.1	215.5	198.7	168.8	197.7	214.6	198.4	40- 50	163.9	543.9	48.7,48.7
60	122.1	156.0	179.2	159.8	123.1	157.9	177.7	159.0	50- 60	157.0	700.9	62.7,62.7
70	73.10	112.0	137.3	116.0	74.42	112.1	134.0	113.7	60- 70	131.4	832.3	74.5,74.5
80	24.83	66.17	92.54	69.76	26.49	66.85	90.19	68.67	70- 80	91.32	923.6	82.7,82.7
90	0.2840	36.77	62.19	39.67	0.2459	40.79	63.52	41.01	80- 90	51.14	974.7	87.2,87.2
100	0.2605	33.23	57.20	36.05	0.1997	37.37	59.68	38.25	90-100	37.79	1013	90.6,90.6
110	0.2699	31.15	52.13	34.09	0.2178	33.59	54.33	34.62	100-110	33.75	1046	93.6,93.6
120	0.2962	26.91	46.09	29.97	0.2383	28.48	47.36	29.35	110-120	27.95	1074	96.1,96.1
130	0.3611	19.83	38.12	23.50	0.2528	21.33	38.24	21.35	120-130	20.61	1095	98,98
140	0.4989	11.89	27.25	15.98	0.2570	13.09	26.76	11.92	130-140	13.04	1108	99.1,99.1
150	0.6437	6.613	15.83	9.491	0.2758	7.087	14.08	5.675	140-150	6.507	1114	99.7,99.7
160	0.7337	3.357	7.654	4.586	0.3308	2.742	6.205	2.599	150-160	2.414	1117	99.9,99.9
170	0.6926	0.6797	1.439	0.6809	0.4177	0.4255	0.5289	0.3883	160-170	0.5756	1117	100,100
180	0.5299	0.5271	0.5205	0.5233	0.5295	0.5294	0.5203	0.5229	170-180	0.0530	1117	100,100
DEG	LUMINOUS INTENSITY:cd									UNIT:lm		

Conical surface Flux(90deg): 461.6 lm

%lum = 41.3%
 %lamp = 41.3%

Conical surface Flux(120deg): 700.89 lm

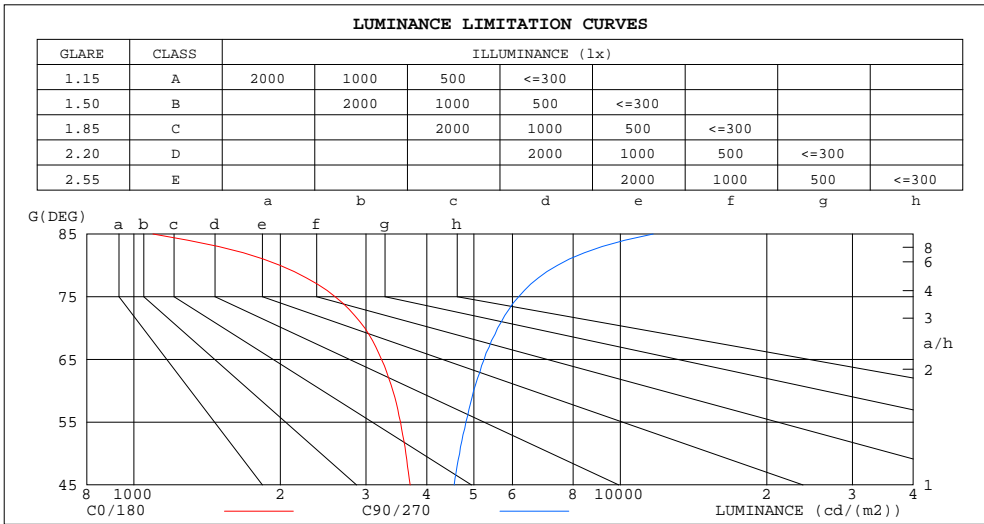
%lum = 62.7%
 %lamp = 62.7%

C Range: 0 - 360DEG
 C Interval: 22.5DEG
 Test Speed: HIGH
 Temperature:24.1DEG
 Operators:Hill
 Test Date:2024-12-21

γ Range: 0 - 180DEG
 γ Interval: 1.0DEG
 Test System:EVERFINE GO-R5000_V2 SYSTEM V2.00.446
 Humidity:44%
 Test Distance:2.519m [K=1.0000]
 Remarks:

LUMINANCE LIMITATION CURVES

Test:U:120.08V I:0.1231A P:14.550W PF:0.9843 Freq:60.00Hz Lamp Flux:1117.44x1 lm		
NAME: LED Luminaire	TYPE: N/A	WEIGHT: N/A
SPEC.: N/A	DIM.: N/A	SERIAL No.: N/A
	SUR.: N/A	Shielding Angle: N/A



LUMINANCE cd/(m2)		
G (DEG)	C0/180	C90/270
85	1094	11685
80	1997	7426
75	2593	6179
70	2984	5593
65	3230	5247
60	3408	4994
55	3532	4813
50	3624	4672
45	3699	4556

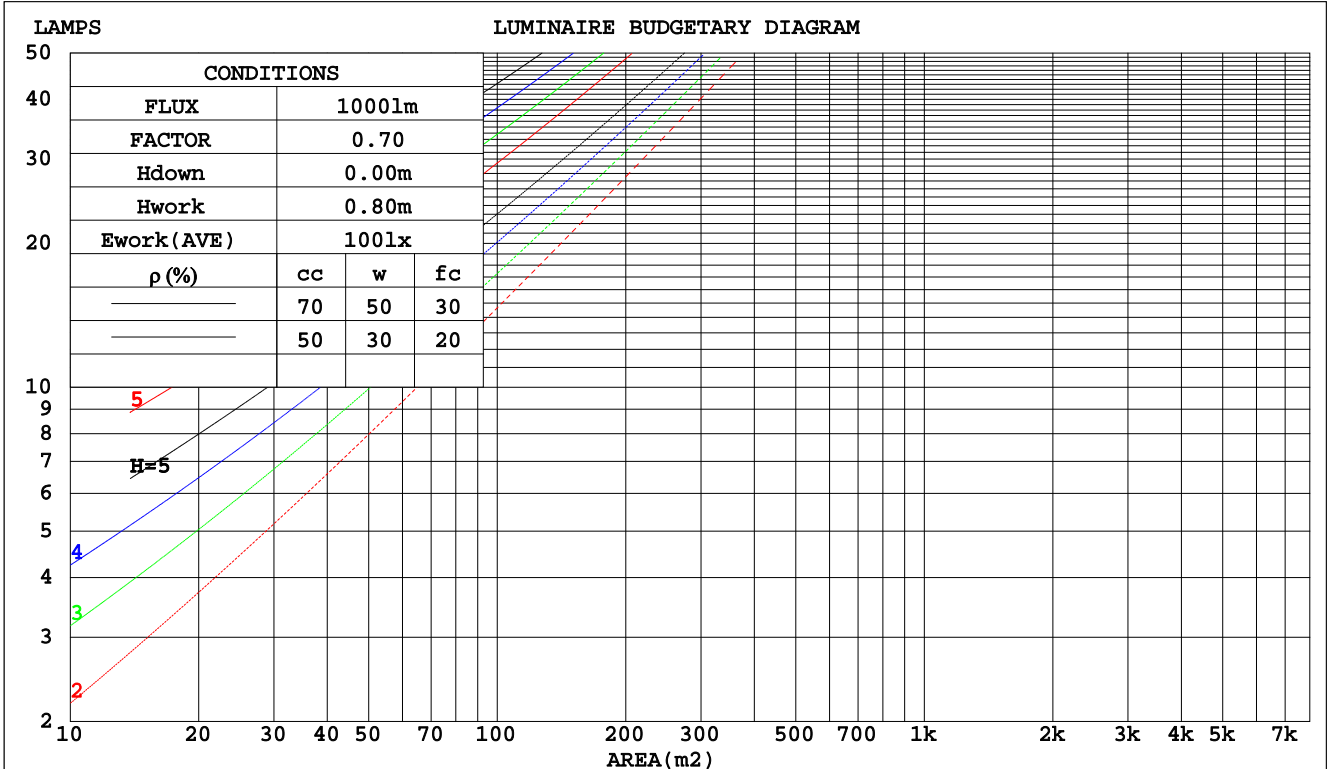
C Range: 0 - 360DEG
 C Interval: 22.5DEG
 Test Speed: HIGH
 Temperature: 24.1DEG
 Operators: Hill
 Test Date: 2024-12-21

γ Range: 0 - 180DEG
 γ Interval: 1.0DEG
 Test System: EVERFINE GO-R5000_V2 SYSTEM V2.00.446
 Humidity: 44%
 Test Distance: 2.519m [K=1.0000]
 Remarks:

CU AND LUMINAIRE BUDGETARY ESTIMATE DIAGRAM

Test:U:120.08V I:0.1231A P:14.550W PF:0.9843 Freq:60.00Hz Lamp Flux:1117.44x1 lm		
NAME: LED Luminaire	TYPE: N/A	WEIGHT: N/A
SPEC.: N/A	DIM.: N/A	SERIAL No.: N/A
	SUR.: N/A	Shielding Angle: N/A

pcc	80%			70%			50%			30%			10%			0
	50%	30%	10%	50%	30%	10%	50%	30%	10%	50%	30%	10%	50%	30%	10%	0
pw																
pfc	20%			20%			20%			20%			20%			0
RCR	RCR:Room Cavity Ratio															
	Coefficients of Utilization(CU)															
0.0	1.16	1.16	1.16	1.12	1.12	1.12	1.04	1.04	1.04	.97	.97	.97	.90	.90	.90	.87
1.0	.99	.94	.90	.95	.91	.87	.89	.85	.82	.83	.80	.77	.77	.75	.73	.70
2.0	.85	.78	.72	.82	.75	.70	.76	.71	.66	.71	.67	.63	.66	.63	.59	.57
3.0	.74	.66	.59	.72	.64	.57	.67	.60	.55	.62	.57	.52	.58	.54	.50	.47
4.0	.65	.56	.49	.63	.55	.48	.59	.52	.46	.55	.49	.44	.51	.46	.42	.39
5.0	.58	.49	.42	.56	.48	.41	.53	.45	.39	.49	.43	.38	.46	.41	.36	.34
6.0	.52	.43	.36	.50	.42	.36	.47	.40	.34	.44	.38	.33	.42	.36	.32	.29
7.0	.47	.38	.32	.46	.37	.31	.43	.35	.30	.40	.34	.29	.38	.32	.28	.26
8.0	.43	.34	.28	.41	.33	.28	.39	.32	.27	.37	.30	.26	.35	.29	.25	.23
9.0	.39	.31	.25	.38	.30	.25	.36	.29	.24	.34	.28	.23	.32	.26	.22	.20
10.0	.36	.28	.23	.35	.27	.22	.33	.26	.22	.31	.25	.21	.30	.24	.20	.18



C Range: 0 - 360DEG
 C Interval: 22.5DEG
 Test Speed: HIGH
 Temperature: 24.1DEG
 Operators: Hill
 Test Date: 2024-12-21

γ Range: 0 - 180DEG
 γ Interval: 1.0DEG
 Test System: EVERFINE GO-R5000_V2 SYSTEM V2.00.446
 Humidity: 44%
 Test Distance: 2.519m [K=1.0000]
 Remarks:

WEC AND CCEC

Test:U:120.08V I:0.1231A P:14.550W PF:0.9843 Freq:60.00Hz		
Lamp Flux:1117.44x1 lm		
NAME: LED Luminaire	TYPE: N/A	WEIGHT: N/A
SPEC.: N/A	DIM.: N/A	SERIAL No.: N/A
	SUR.: N/A	Shielding Angle: N/A

ρcc	80%			70%			50%			30%			10%			0
ρw	50%	30%	10%	50%	30%	10%	50%	30%	10%	50%	30%	10%	50%	30%	10%	0
ρfc	20%			20%			20%			20%			20%			0
RCR	RCR:Room Cavity Ratio						Wall Exitance Coefficients(WEC)									
0.0																
1.0	.348	.198	.063	.337	.192	.061	.316	.181	.058	.297	.171	.055	.280	.162	.052	
2.0	.313	.172	.053	.303	.167	.051	.284	.158	.049	.267	.150	.047	.251	.142	.045	
3.0	.283	.151	.045	.274	.147	.044	.258	.140	.042	.242	.133	.041	.228	.126	.039	
4.0	.258	.134	.039	.250	.131	.039	.235	.125	.037	.221	.119	.036	.208	.113	.034	
5.0	.236	.120	.035	.229	.118	.034	.216	.112	.033	.203	.107	.032	.191	.102	.031	
6.0	.218	.109	.031	.211	.107	.031	.199	.102	.030	.187	.097	.029	.176	.093	.028	
7.0	.202	.100	.028	.196	.098	.028	.184	.093	.027	.174	.089	.026	.164	.085	.025	
8.0	.188	.092	.026	.182	.090	.025	.172	.086	.025	.162	.082	.024	.153	.079	.023	
9.0	.175	.085	.024	.170	.083	.023	.161	.080	.023	.152	.076	.022	.143	.073	.021	
10.0	.164	.079	.022	.160	.077	.022	.151	.074	.021	.143	.071	.020	.135	.068	.019	

ρcc	80%			70%			50%			30%			10%			0
ρw	50%	30%	10%	50%	30%	10%	50%	30%	10%	50%	30%	10%	50%	30%	10%	0
ρfc	20%			20%			20%			20%			20%			0
RCR	RCR:Room Cavity Ratio						Ceiling Cavity Exitance Coefficients(CCEC)									
0.0	.288	.288	.288	.246	.246	.246	.168	.168	.168	.096	.096	.096	.031	.031	.031	
1.0	.281	.254	.229	.240	.218	.197	.164	.150	.137	.095	.087	.079	.030	.028	.026	
2.0	.274	.231	.194	.235	.198	.168	.161	.137	.117	.093	.080	.069	.030	.026	.022	
3.0	.266	.214	.172	.228	.184	.149	.157	.128	.104	.091	.075	.062	.029	.024	.020	
4.0	.259	.201	.157	.222	.174	.136	.153	.121	.096	.088	.071	.057	.028	.023	.019	
5.0	.251	.191	.146	.216	.165	.127	.149	.115	.090	.086	.068	.053	.028	.022	.018	
6.0	.244	.183	.139	.210	.158	.121	.145	.111	.086	.084	.065	.051	.027	.021	.017	
7.0	.237	.176	.133	.204	.153	.116	.141	.107	.082	.082	.063	.049	.026	.021	.016	
8.0	.231	.171	.129	.199	.148	.113	.137	.104	.080	.080	.061	.048	.026	.020	.016	
9.0	.224	.166	.126	.193	.144	.110	.134	.101	.078	.078	.060	.047	.025	.020	.015	
10.0	.219	.162	.123	.189	.140	.108	.131	.099	.077	.076	.058	.046	.025	.019	.015	

C Range: 0 - 360DEG
 C Interval: 22.5DEG
 Test Speed: HIGH
 Temperature:24.1DEG
 Operators:Hill
 Test Date:2024-12-21

γ Range: 0 - 180DEG
 γ Interval: 1.0DEG
 Test System:EVERFINE GO-R5000_V2 SYSTEM V2.00.446
 Humidity:44%
 Test Distance:2.519m [K=1.0000]
 Remarks:

UGR(Unified Glare Rating) Table

Test:U:120.08V I:0.1231A P:14.550W PF:0.9843 Freq:60.00Hz Lamp Flux:1117.44x1 lm		
NAME: LED Luminaire	TYPE: N/A	WEIGHT: N/A
SPEC.: N/A	DIM.: N/A	SERIAL No.: N/A
	SUR.: N/A	Shielding Angle: N/A

ceiling/cavity	0.7	0.7	0.5	0.5	0.3	0.7	0.7	0.5	0.5	0.3
walls	0.5	0.3	0.5	0.3	0.3	0.5	0.3	0.5	0.3	0.3
working plane	0.2	0.2	0.2	0.2	0.2	0.2	0.2	0.2	0.2	0.2
Room dimensions	Viewed crosswise					Viewed endwise				
x = 2H y = 2H	16.0	17.4	16.4	17.8	18.3	17.5	18.9	18.0	19.3	19.8
3H	17.4	18.7	17.9	19.1	19.6	19.7	21.0	20.1	21.4	21.9
4H	17.9	19.1	18.4	19.6	20.1	20.8	22.0	21.2	22.5	23.0
6H	18.2	19.4	18.7	19.9	20.4	21.8	23.0	22.3	23.5	24.0
8H	18.3	19.4	18.8	19.9	20.4	22.4	23.5	22.9	24.0	24.6
12H	18.2	19.3	18.8	19.8	20.4	23.0	24.1	23.6	24.6	25.2
4H 2H	16.9	18.1	17.4	18.6	19.1	18.0	19.3	18.5	19.7	20.3
3H	18.5	19.6	19.1	20.1	20.7	20.4	21.5	21.0	22.0	22.6
4H	19.2	20.2	19.7	20.7	21.3	21.7	22.6	22.2	23.2	23.8
6H	19.6	20.5	20.2	21.1	21.7	22.9	23.8	23.5	24.4	25.0
8H	19.7	20.5	20.3	21.1	21.8	23.6	24.4	24.2	25.0	25.7
12H	19.8	20.5	20.4	21.1	21.8	24.4	25.1	25.0	25.7	26.4
8H 4H	19.8	20.6	20.4	21.2	21.9	21.9	22.7	22.5	23.3	24.0
6H	20.5	21.2	21.1	21.8	22.5	23.4	24.1	24.1	24.7	25.4
8H	20.7	21.4	21.4	22.0	22.7	24.3	24.9	24.9	25.5	26.2
12H	20.9	21.4	21.5	22.1	22.8	25.3	25.8	25.9	26.4	27.2
12H 4H	20.0	20.7	20.6	21.3	22.0	21.9	22.7	22.5	23.3	23.9
6H	20.8	21.4	21.4	22.0	22.8	23.5	24.1	24.1	24.7	25.5
8H	21.1	21.7	21.8	22.3	23.1	24.4	25.0	25.1	25.6	26.4
Variations with the observer position at spacings(CIE Pub.117):										
S = 1.0H	+ 0.1 / - 0.2					+ 0.1 / - 0.1				
1.5H	+ 0.2 / - 0.3					+ 0.2 / - 0.2				
2.0H	+ 0.2 / - 0.4					+ 0.2 / - 0.3				

CIE Pub.117, 1117 lm Total Lamp Luminous Flux Correct (8log(F/F0) = 0.4)
Area: 0.07176 m2

C Range: 0 - 360DEG
C Interval: 22.5DEG
Test Speed: HIGH
Temperature:24.1DEG
Operators:Hill
Test Date:2024-12-21

γ Range: 0 - 180DEG
γ Interval: 1.0DEG
Test System:EVERFINE GO-R5000_V2 SYSTEM V2.00.446
Humidity:44%
Test Distance:2.519m [K=1.0000]
Remarks:

UTILIZATION FACTORS TABLE

Test:U:120.08V I:0.1231A P:14.550W PF:0.9843 Freq:60.00Hz Lamp Flux:1117.44x1 lm		
NAME: LED Luminaire	TYPE: N/A	WEIGHT: N/A
SPEC.: N/A	DIM.: N/A	SERIAL No.: N/A
	SUR.: N/A	Shielding Angle: N/A

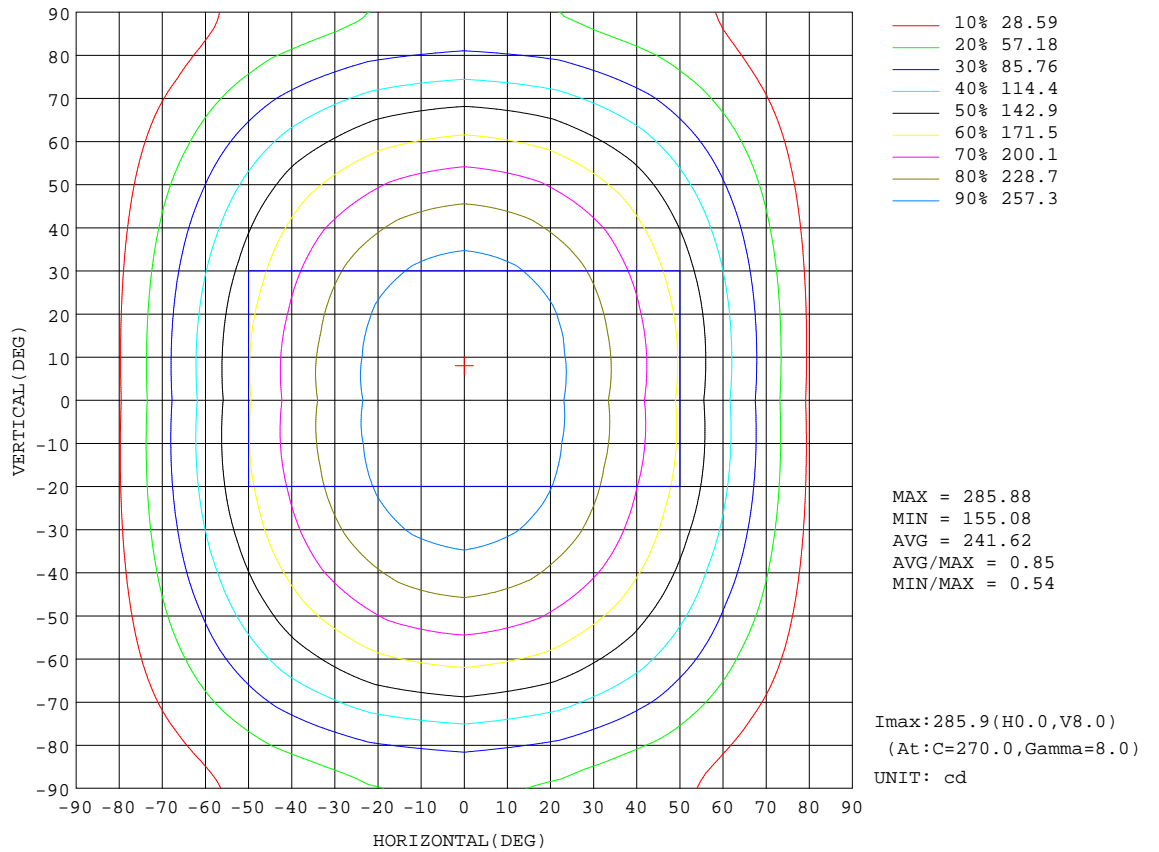
REFLECTANCE										
Ceiling	0.8	0.8	0.8	0.7	0.7	0.7	0.5	0.5	0.5	0
Walls	0.7	0.5	0.3	0.7	0.5	0.3	0.7	0.5	0.3	0
Working plane	0.2	0.2	0.2	0.2	0.2	0.2	0.2	0.2	0.2	0
ROOM INDEX	UTILIZATION FACTORS(PERCENT) $k(RI) \times RCR = 5$									
k = 0.60	51	39	32	50	38	31	48	38	31	24
0.80	60	48	40	59	47	40	57	46	39	32
1.00	69	56	48	67	55	48	64	56	47	39
1.25	76	64	56	74	63	55	70	60	54	45
1.50	81	69	61	78	68	61	74	65	59	49
2.00	88	78	70	85	76	69	80	73	67	56
2.50	92	83	76	89	81	74	84	77	71	60
3.00	96	88	81	93	85	79	87	81	76	64
4.00	100	93	88	97	91	85	91	85	81	68
5.00	103	97	92	99	94	89	93	89	85	71
ROOM INDEX	UF(total)									Direct
According to DIN EN 13032-2 2004			Suspended				SHRNOM = 1.25			

C Range: 0 - 360DEG
 C Interval: 22.5DEG
 Test Speed: HIGH
 Temperature:24.1DEG
 Operators:Hill
 Test Date:2024-12-21

γ Range: 0 - 180DEG
 γ Interval: 1.0DEG
 Test System:EVERFINE GO-R5000_V2 SYSTEM V2.00.446
 Humidity:44%
 Test Distance:2.519m [K=1.0000]
 Remarks:

ISOCANDELA DIAGRAM

Test:U:120.08V I:0.1231A P:14.550W PF:0.9843 Freq:60.00Hz Lamp Flux:1117.44x1 lm		
NAME: LED Luminaire	TYPE: N/A	WEIGHT: N/A
SPEC.: N/A	DIM.: N/A	SERIAL No.: N/A
	SUR.: N/A	Shielding Angle: N/A



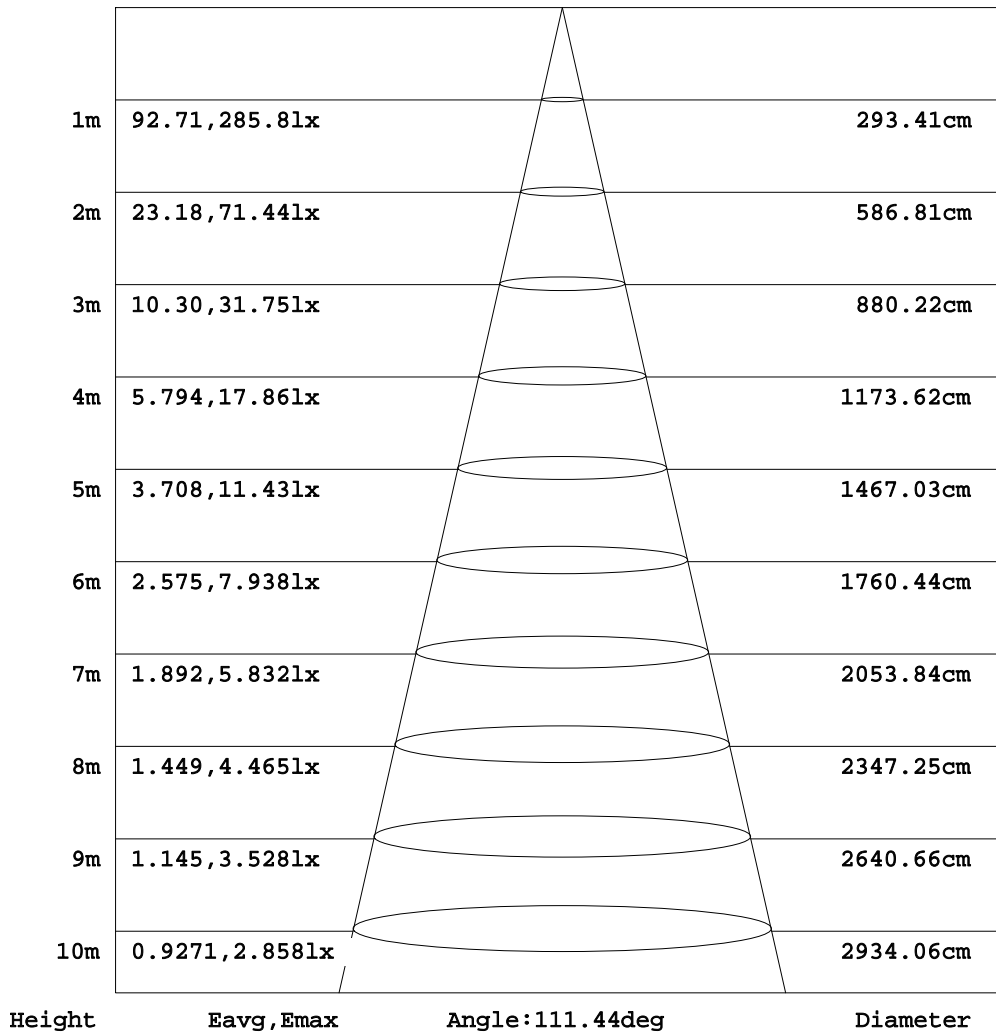
C Range: 0 - 360DEG
 C Interval: 22.5DEG
 Test Speed: HIGH
 Temperature: 24.1DEG
 Operators: Hill
 Test Date: 2024-12-21

γ Range: 0 - 180DEG
 γ Interval: 1.0DEG
 Test System: EVERFINE GO-R5000_V2 SYSTEM V2.00.446
 Humidity: 44%
 Test Distance: 2.519m [K=1.0000]
 Remarks:

AAI Figure

Test:U:120.08V I:0.1231A P:14.550W PF:0.9843 Freq:60.00Hz Lamp Flux:1117.44x1 lm		
NAME: LED Luminaire	TYPE: N/A	WEIGHT: N/A
SPEC.: N/A	DIM.: N/A	SERIAL No.: N/A
	SUR.: N/A	Shielding Angle: N/A

Flux out:640.2 lm



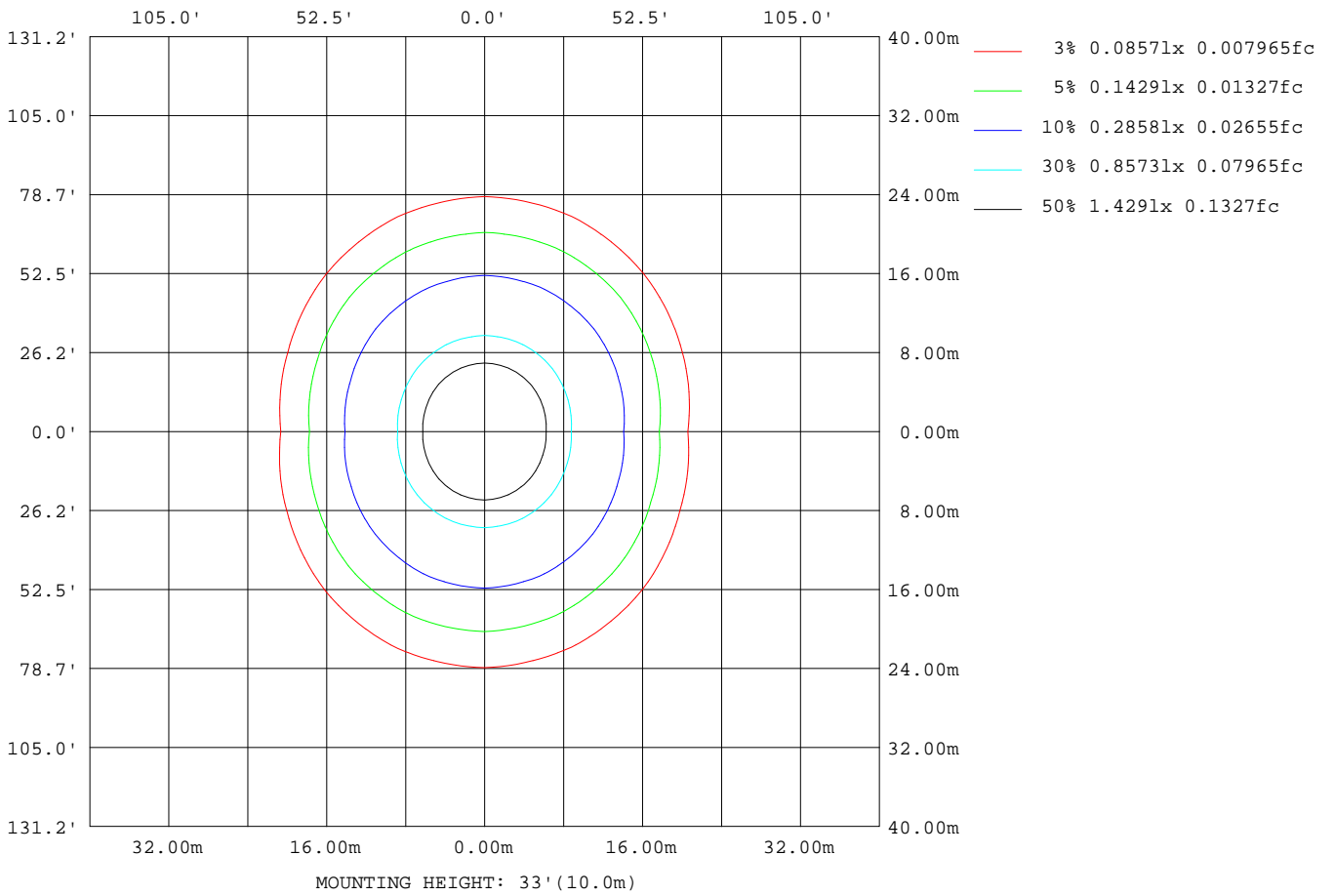
Note:The Curves indicate the illuminated area and the average illumination when the luminaire is at different distance.

C Range: 0 - 360DEG
C Interval: 22.5DEG
Test Speed: HIGH
Temperature:24.1DEG
Operators:Hill
Test Date:2024-12-21

γ Range: 0 - 180DEG
γ Interval: 1.0DEG
Test System:EVERFINE GO-R5000_V2 SYSTEM V2.00.446
Humidity:44%
Test Distance:2.519m [K=1.0000]
Remarks:

ISOLUX DIAGRAM

Test:U:120.08V I:0.1231A P:14.550W PF:0.9843 Freq:60.00Hz Lamp Flux:1117.44x1 lm		
NAME: LED Luminaire	TYPE: N/A	WEIGHT: N/A
SPEC.: N/A	DIM.: N/A	SERIAL No.: N/A
	SUR.: N/A	Shielding Angle: N/A



C Range: 0 - 360DEG
 C Interval: 22.5DEG
 Test Speed: HIGH
 Temperature:24.1DEG
 Operators:Hill
 Test Date:2024-12-21

γ Range: 0 - 180DEG
 γ Interval: 1.0DEG
 Test System:EVERFINE GO-R5000_V2 SYSTEM V2.00.446
 Humidity:44%
 Test Distance:2.519m [K=1.0000]
 Remarks:

LED Avg.L Report

Test:U:120.08V I:0.1231A P:14.550W PF:0.9843 Freq:60.00Hz Lamp Flux:1117.44x1 lm		
NAME: LED Luminaire	TYPE: N/A	WEIGHT: N/A
SPEC.: N/A	DIM.: N/A	SERIAL No.: N/A
	SUR.: N/A	Shielding Angle: N/A

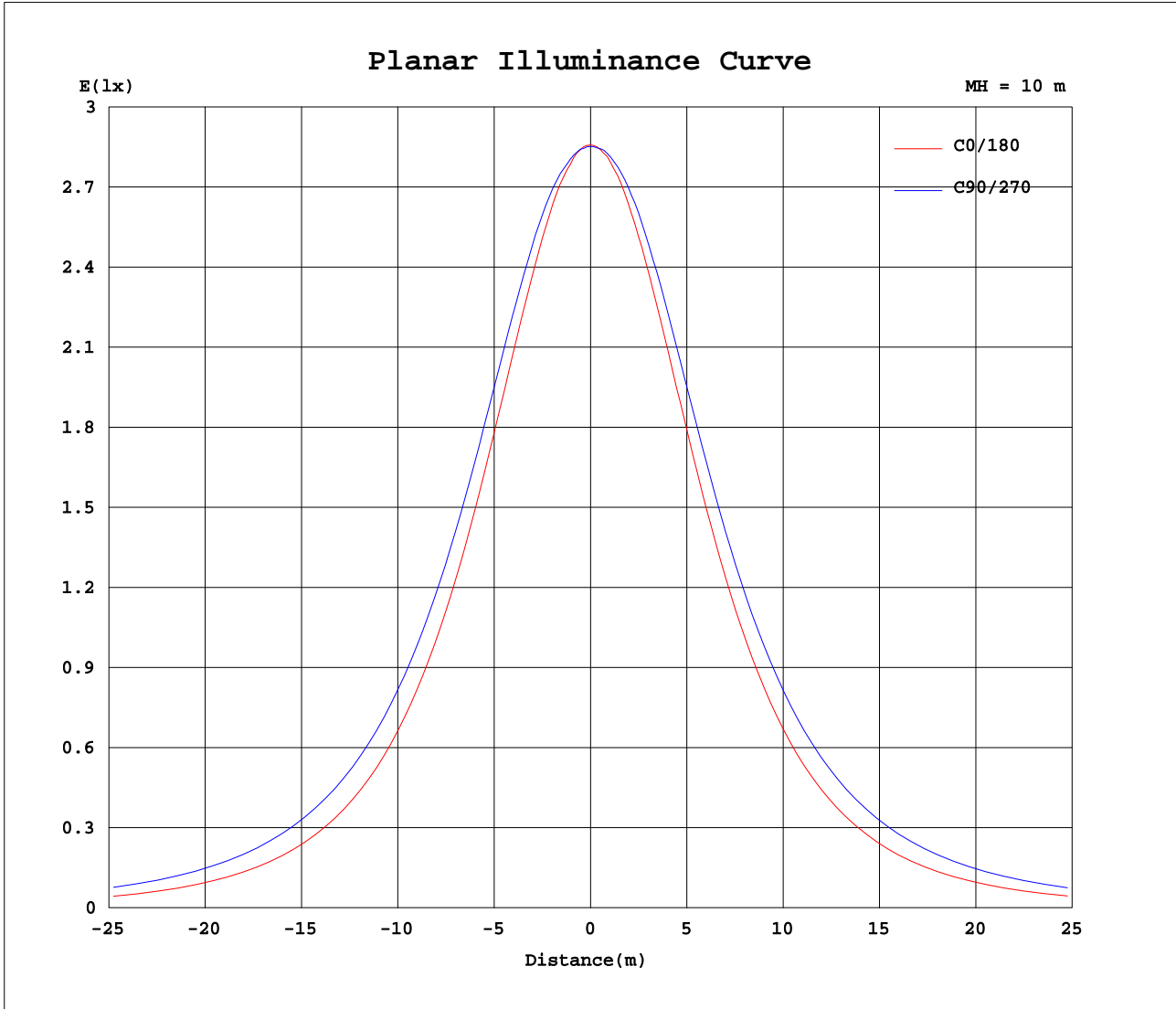
AvgL	cd/m2
L_0~180(65)av	3245
L_0~180(75)av	2632
L_0~180(85)av	1177
L_90~270(65)av	5211
L_90~270(75)av	6097
L_90~270(85)av	11604
L_45(65)av	4490
L_45(75)av	4867
L_45(85)av	7814

Standard: GB/T 29293-2012

C Range: 0 - 360DEG
 C Interval: 22.5DEG
 Test Speed: HIGH
 Temperature:24.1DEG
 Operators:Hill
 Test Date:2024-12-21

γ Range: 0 - 180DEG
 γ Interval: 1.0DEG
 Test System:EVERFINE GO-R5000_V2 SYSTEM V2.00.446
 Humidity:44%
 Test Distance:2.519m [K=1.0000]
 Remarks:

Planar Illuminance Curve



C Range: 0 - 360DEG
 C Interval: 22.5DEG
 Test Speed: HIGH
 Temperature: 24.1DEG
 Operators: Hill
 Test Date: 2024-12-21

γ Range: 0 - 180DEG
 γ Interval: 1.0DEG
 Test System: EVERFINE GO-R5000_V2 SYSTEM V2.00.446
 Humidity: 44%
 Test Distance: 2.519m [K=1.0000]
 Remarks:

LUMINOUS DISTRIBUTION INTENSITY DATA

Test:U:120.08V I:0.1231A P:14.550W PF:0.9843 Freq:60.00Hz Lamp Flux:1117.44x1 lm		
NAME: LED Luminaire	TYPE: N/A	WEIGHT: N/A
SPEC.: N/A	DIM.: N/A	SERIAL No.: N/A
	SUR.: N/A	Shielding Angle: N/A

Table--1

UNIT: cd

C(DEG) γ (DEG)	0	22.5	45	67.5	90	112.5	135	157.5	180	202.5	225	247.5	270	292.5	315	337.5			
0	285	285	285	285	285	285	285	285	285	285	285	285	285	285	285	285			
5	284	284	284	285	285	285	284	284	284	285	285	286	286	286	284	285			
10	280	280	282	284	285	284	282	281	280	281	283	285	286	285	283	281			
15	273	274	278	282	284	282	279	276	274	276	280	283	284	283	280	276			
20	264	266	272	278	280	279	273	268	265	268	274	279	281	279	274	269			
25	252	256	264	271	275	272	266	259	254	259	267	272	275	273	266	259			
30	239	244	254	263	267	264	256	247	240	247	257	264	267	264	257	247			
35	223	230	242	252	257	254	245	233	225	233	245	253	257	253	245	233			
40	206	214	228	240	245	241	231	218	208	217	231	241	244	241	231	218			
45	187	197	212	225	231	227	216	201	189	200	215	226	230	226	216	201			
50	167	178	195	209	216	211	199	182	169	180	198	209	215	210	198	182			
55	145	157	176	192	198	194	180	162	147	160	179	191	197	192	180	161			
60	122	134	156	173	179	175	160	140	123	138	158	172	178	172	159	140			
65	97.8	112	134	152	159	154	138	117	99.1	115	135	150	157	151	137	117			
70	73.1	88.3	112	129	137	131	116	93.2	74.4	90.5	112	128	134	129	114	92.7			
75	48.1	64.8	89.0	107	115	109	92.9	69.7	49.7	66.5	89.0	105	112	106	90.7	68.6			
80	24.8	42.4	66.2	84.4	92.5	86.2	69.8	47.3	26.5	43.3	66.8	83.4	90.2	84.6	68.7	45.7			
85	6.83	24.1	46.5	65.2	73.1	67.0	49.7	27.9	7.89	25.0	48.8	65.6	72.1	66.4	50.5	27.4			
90	0.28	16.1	36.8	54.3	62.2	56.2	39.7	17.9	0.25	17.3	40.8	57.0	63.5	57.1	41.0	19.9			
95	0.26	14.5	34.5	52.0	59.6	53.8	37.3	16.0	0.21	16.2	39.2	55.2	61.7	55.2	39.5	18.0			
100	0.26	13.8	32.3	49.8	57.2	51.8	36.1	16.2	0.20	15.2	37.4	53.3	59.7	53.5	38.3	17.0			
105	0.26	13.0	32.3	47.7	54.9	49.8	35.2	16.3	0.21	14.1	35.5	51.0	57.2	51.2	36.6	16.1			
110	0.27	11.2	31.2	45.5	52.1	47.7	34.1	15.7	0.22	12.7	33.6	48.2	54.3	48.6	34.6	14.1			
115	0.28	8.99	29.6	43.1	49.2	45.2	32.4	14.2	0.23	11.0	31.4	45.1	51.0	45.7	32.5	11.4			
120	0.30	6.64	26.9	40.4	46.1	42.2	30.0	12.3	0.24	9.17	28.5	41.9	47.4	42.4	29.4	8.42			
125	0.32	4.53	23.6	37.0	42.6	38.6	27.0	10.4	0.25	7.18	25.1	37.8	43.3	38.3	25.6	5.57			
130	0.36	3.47	19.8	32.8	38.1	34.3	23.5	8.77	0.25	5.78	21.3	33.3	38.2	33.6	21.4	3.63			
135	0.42	3.07	15.8	28.0	32.9	29.6	19.7	7.43	0.26	4.70	17.2	28.3	32.8	28.3	16.7	3.13			
140	0.50	2.76	11.9	22.9	27.3	24.6	16.0	6.10	0.26	3.51	13.1	22.8	26.8	22.6	11.9	2.67			
145	0.57	2.24	8.51	17.8	21.5	19.4	12.3	4.68	0.26	2.27	9.20	17.0	20.4	16.6	7.57	2.05			
150	0.64	1.64	6.61	12.5	15.8	14.3	9.49	3.30	0.28	1.12	7.09	11.6	14.1	10.8	5.68	1.30			
155	0.71	1.01	5.06	8.69	10.6	10.0	7.10	1.98	0.30	0.32	5.01	8.01	8.78	7.19	4.31	0.54			
160	0.73	0.73	3.36	6.24	7.65	7.22	4.59	0.87	0.33	0.35	2.74	5.45	6.20	5.04	2.60	0.34			
165	0.72	0.71	1.54	3.56	4.46	4.11	2.14	0.72	0.37	0.38	0.75	2.53	3.27	2.44	0.84	0.37			
170	0.69	0.68	0.68	1.02	1.44	1.20	0.68	0.69	0.42	0.42	0.43	0.43	0.53	0.37	0.39	0.43			
175	0.58	0.62	0.63	0.64	0.63	0.63	0.64	0.64	0.50	0.50	0.45	0.45	0.44	0.44	0.44	0.44			
180	0.53	0.53	0.53	0.52	0.52	0.52	0.52	0.53	0.53	0.53	0.53	0.52	0.52	0.53	0.52	0.53			

C Range: 0 - 360DEG
 C Interval: 22.5DEG
 Test Speed: HIGH
 Temperature:24.1DEG
 Operators:Hill
 Test Date:2024-12-21

γ Range: 0 - 180DEG
 γ Interval: 1.0DEG
 Test System:EVERFINE GO-R5000_V2 SYSTEM V2.00.446
 Humidity:44%
 Test Distance:2.519m [K=1.0000]
 Remarks: