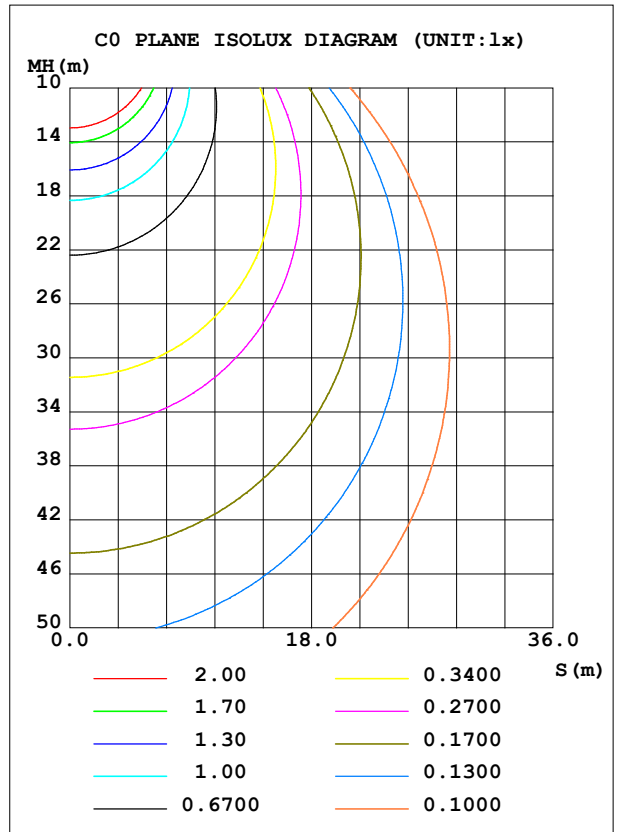
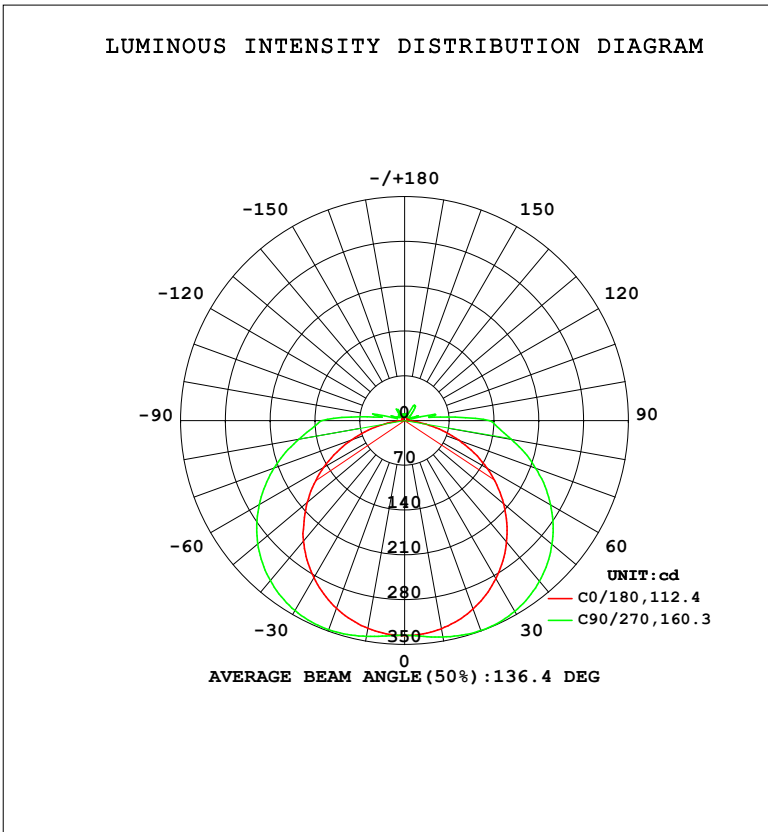


LUMINAIRE PHOTOMETRIC TEST REPORT

Test:U:120.08V I:0.1818A P:20.159W PF:0.9236 Freq:59.98Hz Lamp Flux:1378.12x1 lm		
NAME: 62672LEDDCS	TYPE:	WEIGHT:
SPEC.:	DIM.:	SERIAL No.: 1
MFR.: EVERFINE	SUR.:	Shielding Angle:

DATA OF LAMP		PHOTOMETRIC DATA				Eff: 68.36 lm/W
MODEL	3000K	I _{max} (cd)	349.2	S/MH (C0/180)	1.26	
NOMINAL POWER (W)	20	LOR (%)	100.0	S/MH (C90/270)	1.52	
RATED VOLTAGE (V)	120	TOTAL FLUX (lm)	1378.1	η UP, DN (C0-180)	3.6, 46.6	
NOMINAL FLUX (lm)	1378.12	CIE CLASS	DIRECT	η UP, DN (C180-360)	3.6, 46.2	
LAMPS INSIDE	1	η up (%)	7.2	CIBSE SHR NOM	1.50	
TEST VOLTAGE (V)	120	η down (%)	92.8	CIBSE SHR MAX	1.55	



C Range: 0 - 360DEG
 C Interval: 90.0DEG
 Test Speed: HIGH
 Temperature: 25.3 °C
 Operators: DAMIN
 Test Date: 08 August 2025

γ Range: 0 - 180DEG
 γ Interval: 1.0DEG
 Test System: EVERFINE GO-2000B_V1 SYSTEM V2.00.459
 Humidity: 65.0%
 Test Distance: 7.380m [K=1.0000]
 Remarks:

ZONAL FLUX DIAGRAM

ZONAL FLUX DIAGRAM:

γ	C0	C90	C180	C270					γ	Φ zone	Φ total	%lum,lamp
10	330.6	343.5	329.7	342.4					0- 10	32.11	32.11	2.33,2.33
20	313.2	349.0	312.0	347.7					10- 20	94.67	126.8	9.2,9.2
30	285.4	344.2	283.6	342.9					20- 30	149.4	276.1	20,20
40	248.1	327.9	246.1	326.7					30- 40	189.0	465.2	33.8,33.8
50	202.1	300.7	198.6	299.8					40- 50	208.3	673.4	48.9,48.9
60	148.9	263.5	145.7	262.1					50- 60	204.5	877.9	63.7,63.7
70	90.54	218.1	88.11	217.3					60- 70	178.1	1056	76.6,76.6
80	34.26	169.3	32.33	167.8					70- 80	134.1	1190	86.4,86.4
90	4.557	133.0	4.339	129.8					80- 90	88.81	1279	92.8,92.8
100	4.532	45.10	4.456	42.05					90-100	43.42	1322	95.9,95.9
110	5.108	20.69	5.078	22.73					100-110	17.43	1340	97.2,97.2
120	5.472	9.475	5.376	11.08					110-120	9.236	1349	97.9,97.9
130	5.634	10.75	5.492	11.52					120-130	6.755	1356	98.4,98.4
140	5.862	24.20	5.716	13.42					130-140	7.907	1364	98.9,98.9
150	5.994	15.96	5.901	16.05					140-150	8.625	1372	99.6,99.6
160	6.237	6.462	6.165	6.725					150-160	3.050	1375	99.8,99.8
170	6.489	9.581	6.431	9.746					160-170	2.154	1377	100,100
180	6.625	6.756	6.632	6.744					170-180	0.6810	1378	100,100
DEG	LUMINOUS INTENSITY:cd									UNIT:lm		

Conical surface Flux(90deg): 568.32 lm

%lum = 41.2%

%lamp = 41.2%

Conical surface Flux(120deg): 877.88 lm

%lum = 63.7%

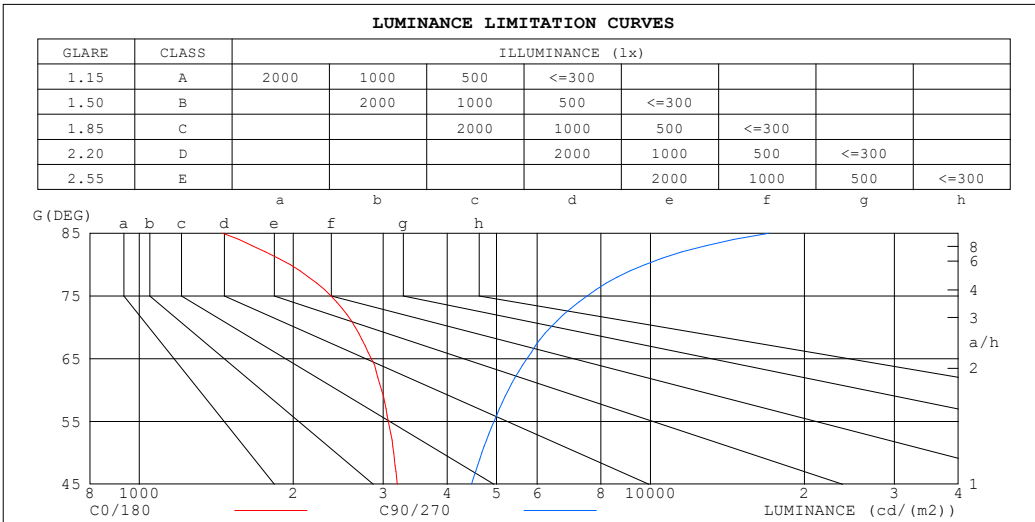
%lamp = 63.7%

C Range: 0 - 360DEG
 C Interval: 90.0DEG
 Test Speed: HIGH
 Temperature:25.3℃
 Operators:DAMIN
 Test Date:08 August 2025

γ Range: 0 - 180DEG
 γ Interval: 1.0DEG
 Test System:EVERFINE GO-2000B_V1 SYSTEM V2.00.459
 Humidity:65.0%
 Test Distance:7.380m [K=1.0000]
 Remarks:

LUMINANCE LIMITATION CURVES

Test:U:120.08V I:0.1818A P:20.159W PF:0.9236 Freq:59.98Hz Lamp Flux:1378.12x1 lm		
NAME: 62672LEDDCS	TYPE:	WEIGHT:
SPEC.:	DIM.:	SERIAL No.: 1
MFR.: EVERFINE	SUR.:	Shielding Angle:



LUMINANCE cd/(m2)		
G (DEG)	C0/180	C90/270
85	1456	17052
80	1973	9750
75	2372	7519
70	2647	6376
65	2844	5727
60	2977	5270
55	3068	4938
50	3144	4679
45	3198	4468

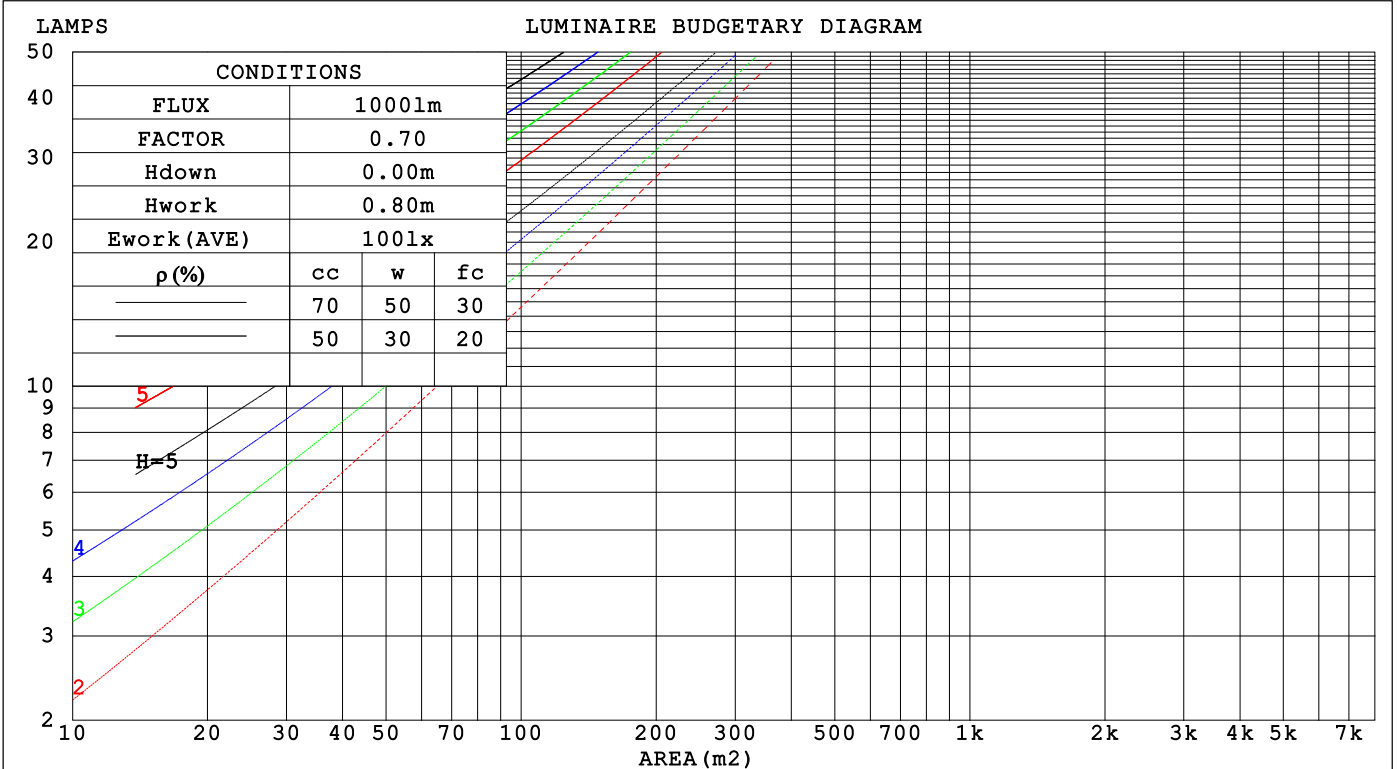
C Range: 0 - 360DEG
 C Interval: 90.0DEG
 Test Speed: HIGH
 Temperature:25.3 °C
 Operators:DAMIN
 Test Date:08 August 2025

γ Range: 0 - 180DEG
 γ Interval: 1.0DEG
 Test System:EVERFINE GO-2000B_V1 SYSTEM V2.00.459
 Humidity:65.0%
 Test Distance:7.380m [K=1.0000]
 Remarks:

CU AND LUMINAIRE BUDGETARY ESTIMATE DIAGRAM

Test:U:120.08V I:0.1818A P:20.159W PF:0.9236 Freq:59.98Hz Lamp Flux:1378.12x1 lm		
NAME: 62672LEDDCS	TYPE:	WEIGHT:
SPEC.:	DIM.:	SERIAL No.: 1
MFR.: EVERFINE	SUR.:	Shielding Angle:

pcc	80%			70%			50%			30%			10%			0
pw	50%	30%	10%	50%	30%	10%	50%	30%	10%	50%	30%	10%	50%	30%	10%	0
pfc	20%			20%			20%			20%			20%			0
RCR	RCR:Room Cavity Ratio						Coefficients of Utilization(CU)									
0.0	1.17	1.17	1.17	1.14	1.14	1.14	1.07	1.07	1.07	1.01	1.01	1.01	.95	.95	.95	.93
1.0	.99	.93	.89	.96	.91	.87	.90	.86	.82	.85	.82	.79	.80	.77	.75	.72
2.0	.84	.77	.70	.82	.75	.69	.77	.71	.66	.73	.68	.63	.69	.64	.61	.58
3.0	.73	.64	.57	.71	.63	.56	.67	.60	.54	.63	.57	.52	.60	.55	.50	.48
4.0	.64	.55	.47	.62	.54	.47	.59	.51	.45	.56	.49	.44	.53	.47	.43	.40
5.0	.57	.47	.40	.56	.47	.40	.53	.45	.39	.50	.43	.38	.47	.41	.36	.34
6.0	.51	.42	.35	.50	.41	.34	.47	.39	.33	.45	.38	.33	.42	.36	.32	.29
7.0	.46	.37	.30	.45	.36	.30	.43	.35	.29	.41	.34	.29	.39	.33	.28	.26
8.0	.42	.33	.27	.41	.32	.27	.39	.31	.26	.37	.30	.25	.35	.29	.25	.23
9.0	.38	.30	.24	.37	.29	.24	.36	.28	.23	.34	.28	.23	.33	.27	.22	.20
10.0	.35	.27	.22	.34	.27	.21	.33	.26	.21	.32	.25	.21	.30	.24	.20	.18



C Range: 0 - 360DEG
 C Interval: 90.0DEG
 Test Speed: HIGH
 Temperature:25.3 °C
 Operators:DAMIN
 Test Date:08 August 2025

γ Range: 0 - 180DEG
 γ Interval: 1.0DEG
 Test System:EVERFINE GO-2000B_V1 SYSTEM V2.00.459
 Humidity:65.0%
 Test Distance:7.380m [K=1.0000]
 Remarks:

WEC AND CCEC

Test:U:120.08V I:0.1818A P:20.159W PF:0.9236 Freq:59.98Hz		
Lamp Flux:1378.12x1 lm		
NAME: 62672LEDDCS	TYPE:	WEIGHT:
SPEC.:	DIM.:	SERIAL No.: 1
MFR.: EVERFINE	SUR.:	Shielding Angle:

ρ _{CC}	80%			70%			50%			30%			10%			0
ρ _w	50%	30%	10%	50%	30%	10%	50%	30%	10%	50%	30%	10%	50%	30%	10%	0
ρ _{fc}	20%			20%			20%			20%			20%			0
RCR	RCR:Room Cavity Ratio						Wall Exitance Coefficients(WEC)									
0.0																
1.0	.377	.214	.068	.368	.210	.067	.350	.201	.064	.334	.192	.062	.319	.185	.060	
2.0	.332	.182	.056	.324	.178	.055	.308	.171	.053	.293	.165	.052	.280	.158	.050	
3.0	.298	.158	.047	.290	.155	.047	.276	.150	.045	.263	.144	.044	.251	.139	.043	
4.0	.269	.140	.041	.262	.137	.041	.250	.132	.040	.238	.128	.039	.227	.123	.038	
5.0	.245	.125	.036	.239	.123	.036	.228	.119	.035	.217	.115	.034	.207	.111	.033	
6.0	.225	.113	.032	.220	.111	.032	.209	.107	.031	.200	.104	.031	.191	.100	.030	
7.0	.208	.103	.029	.203	.101	.029	.194	.098	.028	.185	.095	.028	.177	.092	.027	
8.0	.193	.094	.027	.188	.093	.026	.180	.090	.026	.172	.087	.025	.165	.084	.025	
9.0	.180	.087	.024	.176	.086	.024	.168	.083	.024	.161	.081	.023	.154	.078	.023	
10.0	.168	.081	.022	.165	.080	.022	.158	.077	.022	.151	.075	.021	.145	.073	.021	

ρ _{CC}	80%			70%			50%			30%			10%			0
ρ _w	50%	30%	10%	50%	30%	10%	50%	30%	10%	50%	30%	10%	50%	30%	10%	0
ρ _{fc}	20%			20%			20%			20%			20%			0
RCR	RCR:Room Cavity Ratio						Ceiling Cavity Exitance Coefficients(CCEC)									
0.0	.245	.245	.245	.210	.210	.210	.143	.143	.143	.082	.082	.082	.026	.026	.026	
1.0	.240	.211	.184	.206	.181	.159	.141	.125	.110	.081	.072	.064	.026	.023	.021	
2.0	.233	.187	.149	.200	.161	.129	.137	.112	.090	.079	.065	.053	.025	.021	.017	
3.0	.226	.170	.126	.194	.147	.110	.133	.102	.077	.077	.060	.045	.025	.019	.015	
4.0	.218	.158	.112	.187	.136	.097	.129	.095	.068	.074	.056	.040	.024	.018	.013	
5.0	.210	.148	.101	.181	.128	.088	.124	.089	.062	.072	.052	.037	.023	.017	.012	
6.0	.203	.139	.094	.174	.121	.082	.120	.085	.058	.070	.050	.034	.023	.016	.011	
7.0	.196	.133	.089	.168	.115	.077	.116	.081	.055	.068	.048	.033	.022	.016	.011	
8.0	.189	.127	.085	.163	.110	.074	.112	.077	.052	.065	.046	.031	.021	.015	.010	
9.0	.182	.122	.081	.157	.106	.071	.109	.075	.050	.063	.044	.030	.021	.014	.010	
10.0	.176	.118	.079	.152	.102	.069	.106	.072	.049	.062	.043	.029	.020	.014	.010	

C Range: 0 - 360DEG
 C Interval: 90.0DEG
 Test Speed: HIGH
 Temperature:25.3℃
 Operators:DAMIN
 Test Date:08 August 2025

γ Range: 0 - 180DEG
 γ Interval: 1.0DEG
 Test System:EVERFINE GO-2000B_V1 SYSTEM V2.00.459
 Humidity:65.0%
 Test Distance:7.380m [K=1.0000]
 Remarks:

UGR(Unified Glare Rating) Table

Test:U:120.08V I:0.1818A P:20.159W PF:0.9236 Freq:59.98Hz										
Lamp Flux:1378.12x1 lm										
NAME: 62672LEDDCS					TYPE:			WEIGHT:		
SPEC.:					DIM.:			SERIAL No.: 1		
MFR.: EVERFINE					SUR.:			Shielding Angle:		
ceiling/cavity	0.7	0.7	0.5	0.5	0.3	0.7	0.7	0.5	0.5	0.3
walls	0.5	0.3	0.5	0.3	0.3	0.5	0.3	0.5	0.3	0.3
working plane	0.2	0.2	0.2	0.2	0.2	0.2	0.2	0.2	0.2	0.2
Room dimensions	Viewed crosswise					Viewed endwise				
x = 2H y = 2H	15.2	16.7	15.5	17.0	17.4	17.2	18.7	17.6	19.1	19.4
3H	16.6	18.1	17.1	18.4	18.8	19.7	21.1	20.1	21.5	21.9
4H	17.2	18.6	17.6	19.0	19.4	21.0	22.4	21.5	22.8	23.2
6H	17.6	18.9	18.0	19.3	19.7	22.5	23.7	22.9	24.1	24.6
8H	17.7	18.9	18.1	19.3	19.8	23.3	24.5	23.7	24.9	25.4
12H	17.7	18.9	18.2	19.4	19.8	24.2	25.4	24.6	25.8	26.2
4H 2H	16.2	17.6	16.6	17.9	18.4	17.7	19.1	18.1	19.5	19.9
3H	18.0	19.1	18.4	19.6	20.0	20.4	21.6	20.9	22.0	22.5
4H	18.7	19.8	19.2	20.3	20.7	21.9	23.0	22.4	23.5	24.0
6H	19.3	20.2	19.8	20.7	21.2	23.5	24.5	24.1	25.0	25.5
8H	19.4	20.4	20.0	20.9	21.4	24.5	25.4	25.0	25.9	26.4
12H	19.5	20.4	20.1	20.9	21.5	25.5	26.4	26.1	26.9	27.4
8H 4H	19.5	20.4	20.0	20.9	21.5	22.2	23.1	22.7	23.6	24.1
6H	20.4	21.2	20.9	21.7	22.3	24.0	24.8	24.6	25.4	25.9
8H	20.7	21.4	21.3	22.0	22.6	25.1	25.8	25.7	26.4	27.0
12H	21.0	21.6	21.6	22.2	22.8	26.5	27.1	27.0	27.6	28.3
12H 4H	19.7	20.6	20.3	21.1	21.7	22.2	23.0	22.7	23.5	24.1
6H	20.8	21.5	21.4	22.0	22.6	24.1	24.8	24.7	25.4	26.0
8H	21.3	21.9	21.9	22.5	23.1	25.3	25.9	25.9	26.5	27.1
Variations with the observer position at spacings(CIE Pub.117):										
S = 1.0H	+ 0.1 / - 0.2					+ 0.1 / - 0.1				
1.5H	+ 0.2 / - 0.3					+ 0.2 / - 0.2				
2.0H	+ 0.2 / - 0.5					+ 0.2 / - 0.3				

CIE Pub.117, 1378 lm Total Lamp Luminous Flux Correct (8log(F/F0) = 1.1)
 Area: 0.1 m2

C Range: 0 - 360DEG	γ Range: 0 - 180DEG
C Interval: 90.0DEG	γ Interval: 1.0DEG
Test Speed: HIGH	Test System:EVERFINE GO-2000B_V1 SYSTEM V2.00.459
Temperature:25.3℃	Humidity:65.0%
Operators:DAMIN	Test Distance:7.380m [K=1.0000]
Test Date:08 August 2025	Remarks:

UTILIZATION FACTORS TABLE

Test:U:120.08V I:0.1818A P:20.159W PF:0.9236 Freq:59.98Hz Lamp Flux:1378.12x1 lm		
NAME: 62672LEDDCS	TYPE:	WEIGHT:
SPEC.:	DIM.:	SERIAL No.: 1
MFR.: EVERFINE	SUR.:	Shielding Angle:

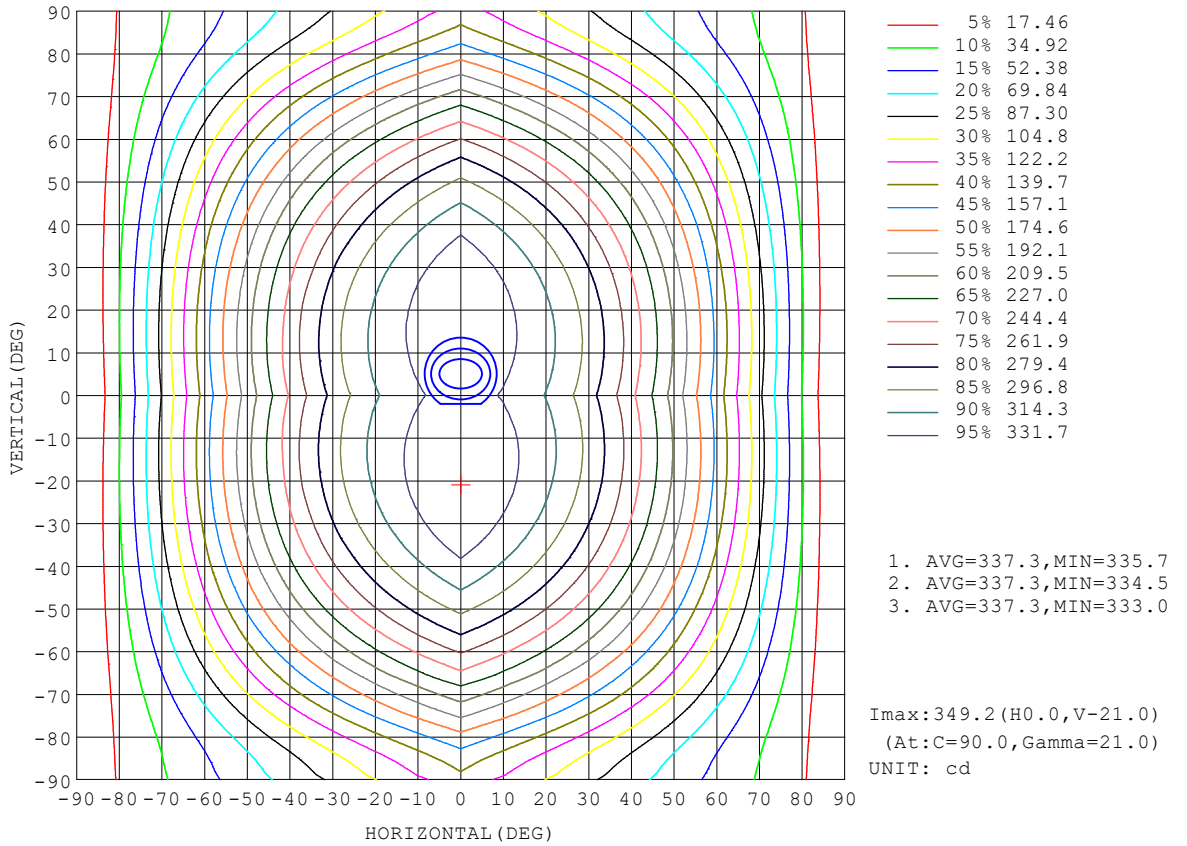
REFLECTANCE										
Ceiling	0.8	0.8	0.8	0.7	0.7	0.7	0.5	0.5	0.5	0
Walls	0.7	0.5	0.3	0.7	0.5	0.3	0.7	0.5	0.3	0
Working plane	0.2	0.2	0.2	0.2	0.2	0.2	0.2	0.2	0.2	0
ROOM INDEX	UTILIZATION FACTORS (PERCENT) $k(RI) \times RCR = 5$									
$k = 0.60$	51	39	31	50	38	31	49	38	31	24
0.80	61	48	40	59	47	40	57	46	39	31
1.00	69	56	48	67	55	48	64	57	47	39
1.25	76	64	55	74	63	55	71	61	54	45
1.50	81	69	61	79	68	60	75	66	59	50
2.00	88	78	70	86	76	69	81	73	67	57
2.50	93	83	76	90	81	74	85	78	72	62
3.00	96	88	81	93	86	79	88	82	76	66
4.00	101	93	87	98	91	86	92	87	82	71
5.00	104	97	92	100	95	90	95	90	86	74
ROOM INDEX	UF(total)									Direct
According to DIN EN 13032-2 2004			Suspended				SHRNOM = 1.25			

C Range: 0 - 360DEG
 C Interval: 90.0DEG
 Test Speed: HIGH
 Temperature:25.3°C
 Operators:DAMIN
 Test Date:08 August 2025

γ Range: 0 - 180DEG
 γ Interval: 1.0DEG
 Test System:EVERFINE GO-2000B_V1 SYSTEM V2.00.459
 Humidity:65.0%
 Test Distance:7.380m [K=1.0000]
 Remarks:

ISOCANDELA DIAGRAM

Test:U:120.08V I:0.1818A P:20.159W PF:0.9236 Freq:59.98Hz Lamp Flux:1378.12x1 lm		
NAME: 62672LEDDCS	TYPE:	WEIGHT:
SPEC.:	DIM.:	SERIAL No.: 1
MFR.: EVERFINE	SUR.:	Shielding Angle:

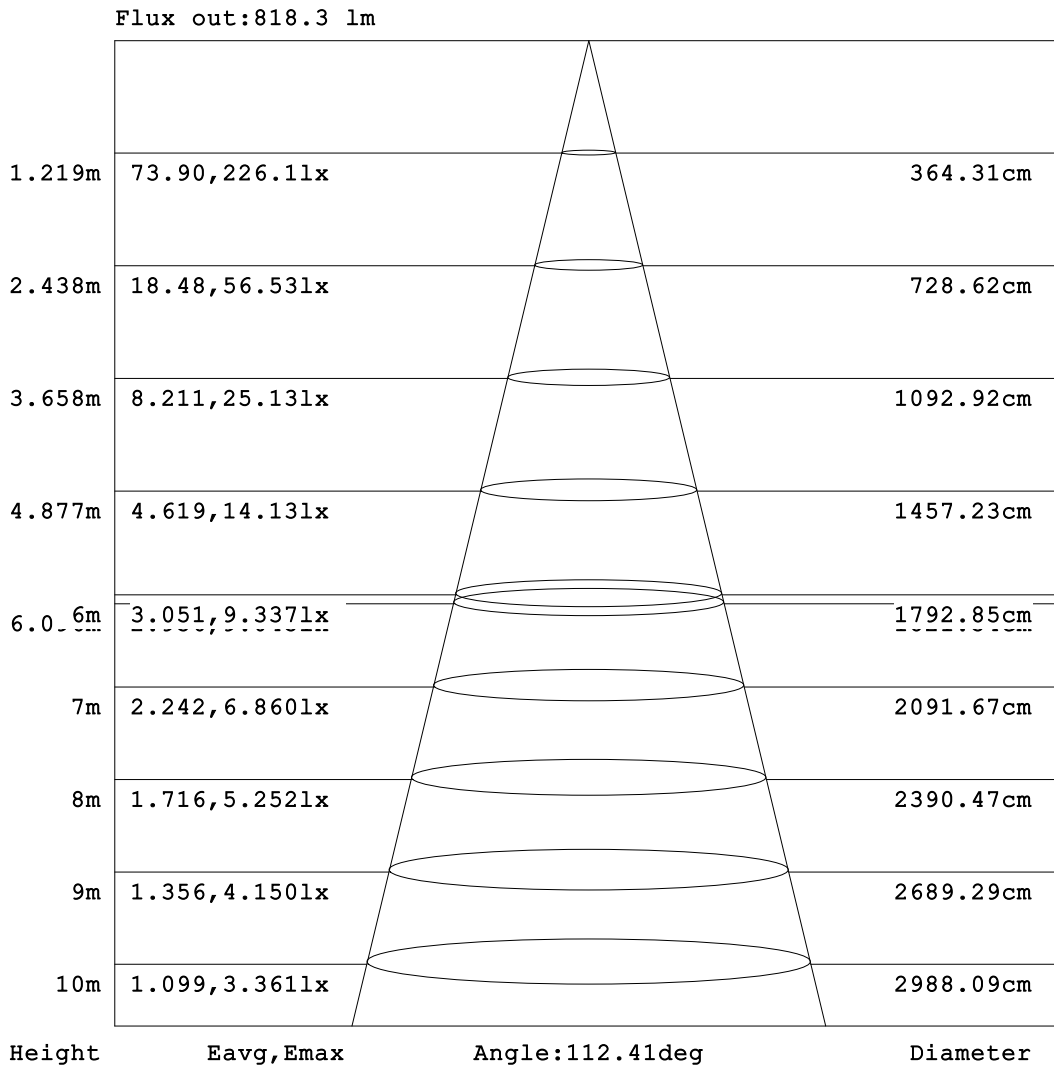


C Range: 0 - 360DEG
C Interval: 90.0DEG
Test Speed: HIGH
Temperature: 25.3 °C
Operators: DAMIN
Test Date: 08 August 2025

γ Range: 0 - 180DEG
γ Interval: 1.0DEG
Test System: EVERFINE GO-2000B_V1 SYSTEM V2.00.459
Humidity: 65.0%
Test Distance: 7.380m [K=1.0000]
Remarks:

AAI Figure

Test:U:120.08V I:0.1818A P:20.159W PF:0.9236 Freq:59.98Hz Lamp Flux:1378.12x1 lm		
NAME: 62672LEDDCS	TYPE:	WEIGHT:
SPEC.:	DIM.:	SERIAL No.: 1
MFR.: EVERFINE	SUR.:	Shielding Angle:



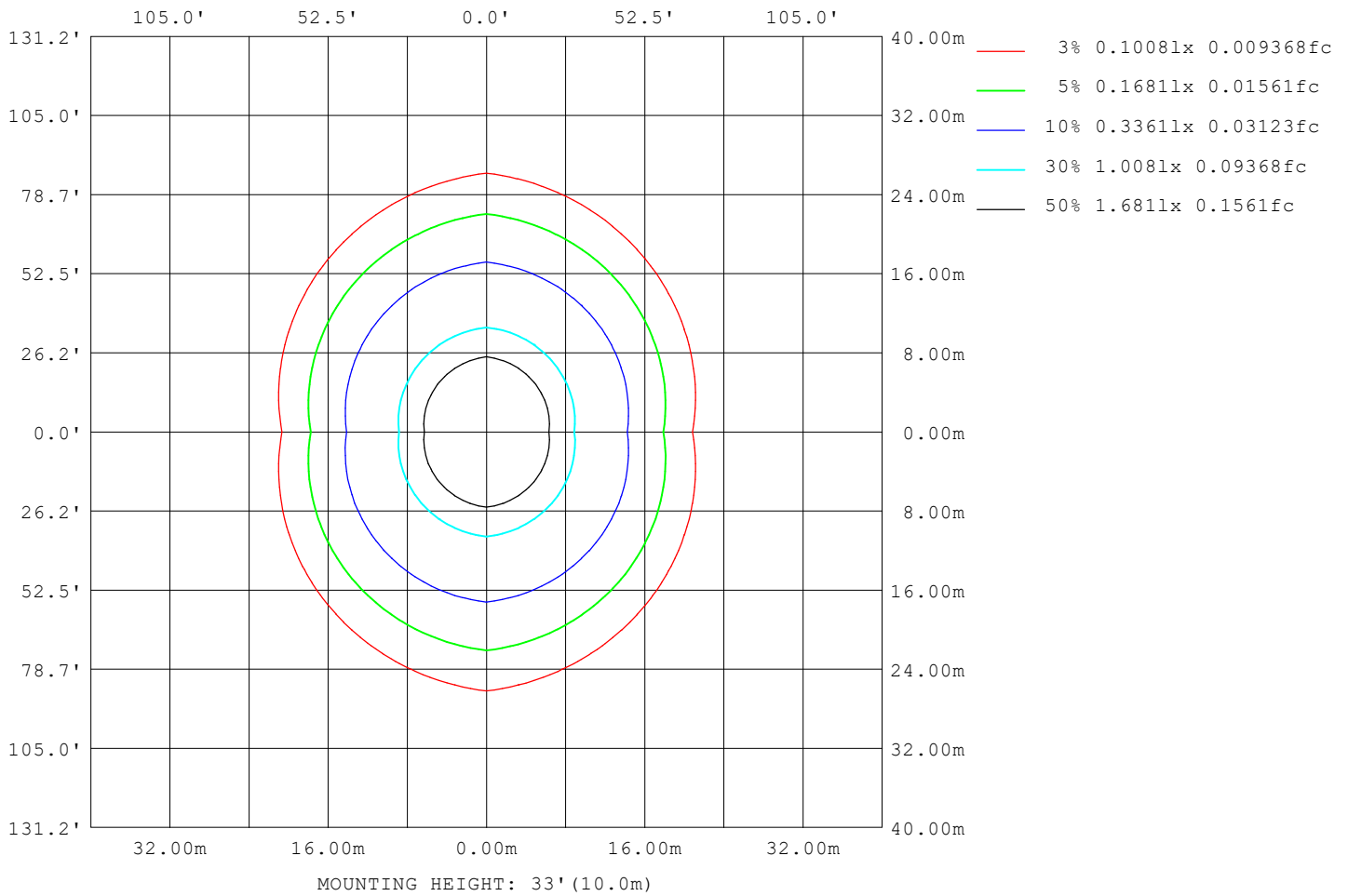
Note: The Curves indicate the illuminated area and the average illumination when the luminaire is at different distance.

C Range: 0 - 360DEG
 C Interval: 90.0DEG
 Test Speed: HIGH
 Temperature: 25.3 °C
 Operators: DAMIN
 Test Date: 08 August 2025

γ Range: 0 - 180DEG
 γ Interval: 1.0DEG
 Test System: EVERFINE GO-2000B_V1 SYSTEM V2.00.459
 Humidity: 65.0%
 Test Distance: 7.380m [K=1.0000]
 Remarks:

ISOLUX DIAGRAM

Test:U:120.08V I:0.1818A P:20.159W PF:0.9236 Freq:59.98Hz Lamp Flux:1378.12x1 lm		
NAME: 62672LEDDCS	TYPE:	WEIGHT:
SPEC.:	DIM.:	SERIAL No.: 1
MFR.: EVERFINE	SUR.:	Shielding Angle:



C Range: 0 - 360DEG
 C Interval: 90.0DEG
 Test Speed: HIGH
 Temperature:25.3 °C
 Operators:DAMIN
 Test Date:08 August 2025

γ Range: 0 - 180DEG
 γ Interval: 1.0DEG
 Test System:EVERFINE GO-2000B_V1 SYSTEM V2.00.459
 Humidity:65.0%
 Test Distance:7.380m [K=1.0000]
 Remarks:

LED Avg.L Report

Test:U:120.08V I:0.1818A P:20.159W PF:0.9236 Freq:59.98Hz Lamp Flux:1378.12x1 lm		
NAME: 62672LEDDCS	TYPE:	WEIGHT:
SPEC.:	DIM.:	SERIAL No.: 1
MFR.: EVERFINE	SUR.:	Shielding Angle:

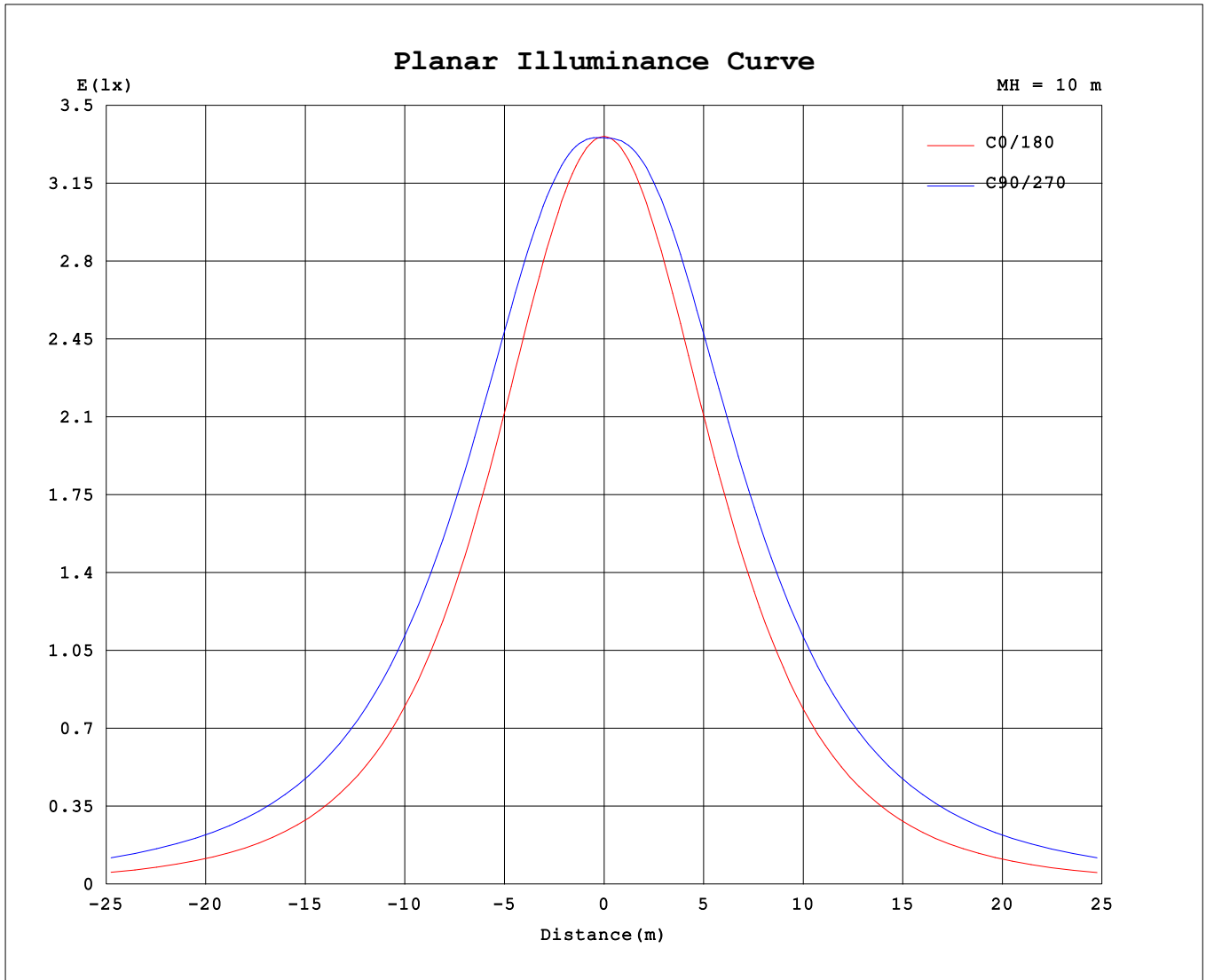
AvgL	cd/m2
L_0~180 (65) av	2809
L_0~180 (75) av	2330
L_0~180 (85) av	1385
L_90~270 (65) av	5707
L_90~270 (75) av	7482
L_90~270 (85) av	16902
L_45 (65) av	4618
L_45 (75) av	5548
L_45 (85) av	11079

Standard: GB/T 29293-2012

C Range: 0 - 360DEG
 C Interval: 90.0DEG
 Test Speed: HIGH
 Temperature:25.3℃
 Operators:DAMIN
 Test Date:08 August 2025

γ Range: 0 - 180DEG
 γ Interval: 1.0DEG
 Test System:EVERFINE GO-2000B_V1 SYSTEM V2.00.459
 Humidity:65.0%
 Test Distance:7.380m [K=1.0000]
 Remarks:

Planar Illuminance Curve



C Range: 0 - 360DEG
 C Interval: 90.0DEG
 Test Speed: HIGH
 Temperature: 25.3 °C
 Operators: DAMIN
 Test Date: 08 August 2025

γ Range: 0 - 180DEG
 γ Interval: 1.0DEG
 Test System: EVERFINE GO-2000B_V1 SYSTEM V2.00.459
 Humidity: 65.0%
 Test Distance: 7.380m [K=1.0000]
 Remarks:

LUMINOUS DISTRIBUTION INTENSITY DATA

Test:U:120.08V I:0.1818A P:20.159W PF:0.9236 Freq:59.98Hz Lamp Flux:1378.12x1 lm		
NAME: 62672LEDDCS	TYPE:	WEIGHT:
SPEC.:	DIM.:	SERIAL No.: 1
MFR.: EVERFINE	SUR.:	Shielding Angle:

Table--1

UNIT: cd

C (DEG) \ γ (DEG)	0	90	180	270															
0	336	336	336	336															
5	335	339	334	338															
10	331	343	330	342															
15	323	347	322	346															
20	313	349	312	348															
25	301	348	299	347															
30	285	344	284	343															
35	268	337	266	336															
40	248	328	246	327															
45	226	316	223	315															
50	202	301	199	300															
55	176	283	173	282															
60	149	263	146	262															
65	120	242	117	240															
70	90.5	218	88.1	217															
75	61.4	195	59.2	193															
80	34.3	169	32.3	168															
85	12.7	149	11.5	146															
90	4.56	133	4.34	130															
95	4.46	66.9	4.28	70.3															
100	4.53	45.1	4.46	42.0															
105	4.81	14.7	4.77	20.8															
110	5.11	20.7	5.08	22.7															
115	5.31	11.7	5.24	13.1															
120	5.47	9.48	5.38	11.1															
125	5.62	8.63	5.42	9.14															
130	5.63	10.7	5.49	11.5															
135	5.76	16.5	5.63	13.1															
140	5.86	24.2	5.72	13.4															
145	5.92	28.4	5.82	19.2															
150	5.99	16.0	5.90	16.1															
155	6.10	6.37	6.02	6.85															
160	6.24	6.46	6.16	6.73															
165	6.38	11.2	6.32	10.3															
170	6.49	9.58	6.43	9.75															
175	6.55	6.73	6.54	6.76															
180	6.62	6.76	6.63	6.74															

C Range: 0 - 360DEG
 C Interval: 90.0DEG
 Test Speed: HIGH
 Temperature:25.3℃
 Operators:DAMIN
 Test Date:08 August 2025

γ Range: 0 - 180DEG
 γ Interval: 1.0DEG
 Test System:EVERFINE GO-2000B_V1 SYSTEM V2.00.459
 Humidity:65.0%
 Test Distance:7.380m [K=1.0000]
 Remarks: