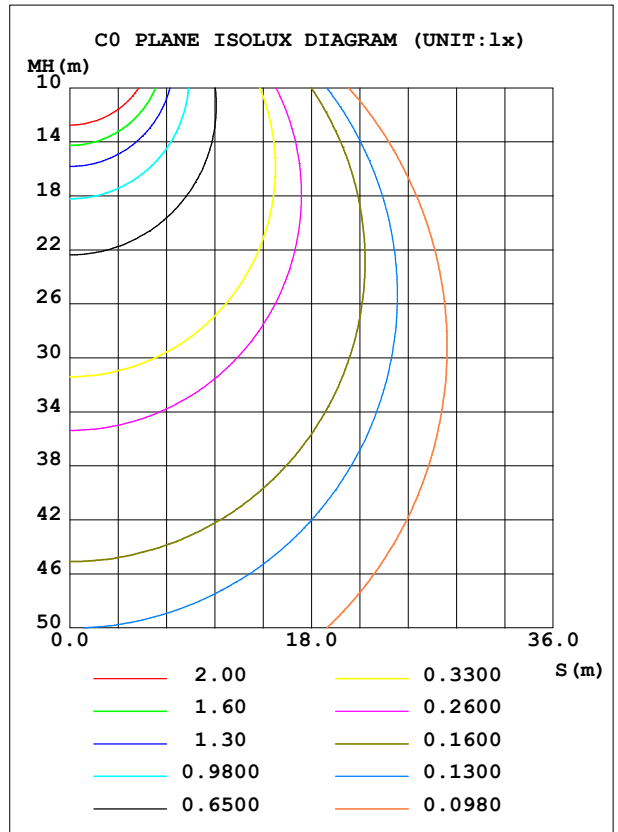
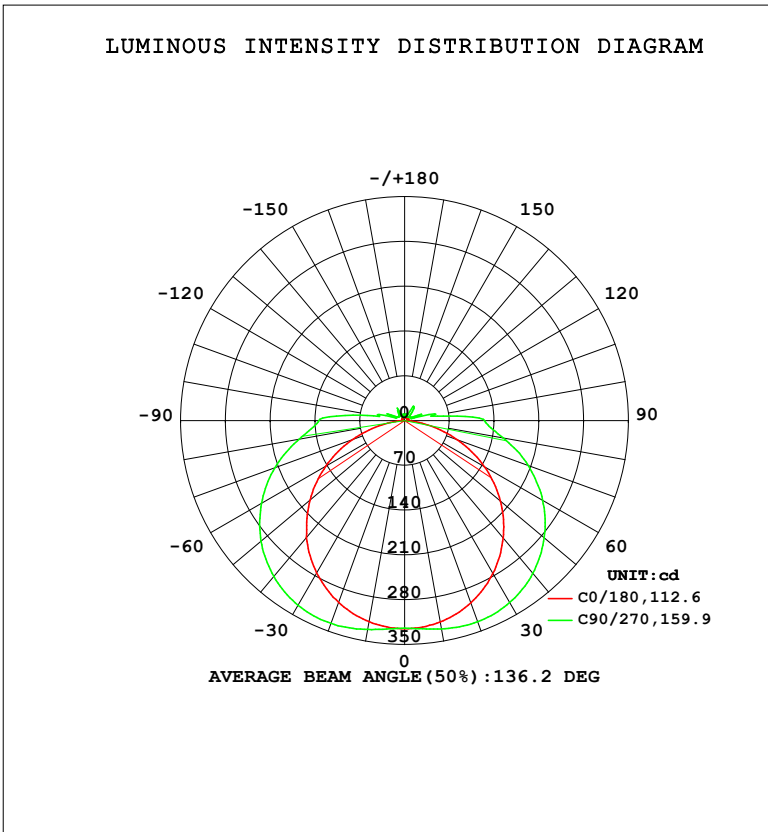


LUMINAIRE PHOTOMETRIC TEST REPORT

Test:U:120.07V I:0.1830A P:20.242W PF:0.9212 Freq:59.98Hz Lamp Flux:1343.66x1 lm		
NAME: 62672LEDDCS	TYPE:	WEIGHT:
SPEC.:	DIM.:	SERIAL No.: 1
MFR.: EVERFINE	SUR.:	Shielding Angle:

DATA OF LAMP		PHOTOMETRIC DATA				Eff: 66.38 lm/W
MODEL	3000K	I _{max} (cd)	337.4	S/MH (C0/180)	1.26	
NOMINAL POWER (W)	20	LOR (%)	100.0	S/MH (C90/270)	1.53	
RATED VOLTAGE (V)	120	TOTAL FLUX (lm)	1343.7	η UP, DN (C0-180)	4.0, 45.5	
NOMINAL FLUX (lm)	1343.66	CIE CLASS	DIRECT	η UP, DN (C180-360)	4.1, 46.4	
LAMPS INSIDE	1	η up (%)	8.1	CIBSE SHR NOM	1.50	
TEST VOLTAGE (V)	120	η down (%)	91.9	CIBSE SHR MAX	1.55	



C Range: 0 - 360DEG
 C Interval: 90.0DEG
 Test Speed: HIGH
 Temperature: 25.3 °C
 Operators: DAMIN
 Test Date: 08 August 2025

γ Range: 0 - 180DEG
 γ Interval: 1.0DEG
 Test System: EVERFINE GO-2000B_V1 SYSTEM V2.00.459
 Humidity: 65.0%
 Test Distance: 7.380m [K=1.0000]
 Remarks:

ZONAL FLUX DIAGRAM

ZONAL FLUX DIAGRAM:

γ	C0	C90	C180	C270					γ	Φ zone	Φ total	%lum,lamp
10	319.7	330.7	319.3	331.4					0- 10	31.05	31.05	2.31,2.31
20	303.1	334.6	302.4	337.0					10- 20	91.49	122.5	9.12,9.12
30	276.0	328.4	275.0	333.3					20- 30	144.2	266.8	19.9,19.9
40	239.6	311.7	238.8	318.1					30- 40	182.5	449.2	33.4,33.4
50	195.5	285.0	193.1	293.1					40- 50	200.9	650.1	48.4,48.4
60	144.2	249.4	142.1	258.3					50- 60	197.5	847.6	63.1,63.1
70	87.07	205.5	86.36	216.0					60- 70	172.4	1020	75.9,75.9
80	32.40	156.4	32.00	167.5					70- 80	129.6	1150	85.6,85.6
90	4.487	125.3	4.254	134.1					80- 90	85.33	1235	91.9,91.9
100	4.443	42.00	4.313	40.14					90-100	50.61	1286	95.7,95.7
110	4.857	28.27	4.854	24.45					100-110	18.70	1304	97.1,97.1
120	5.290	10.40	5.128	12.59					110-120	11.29	1316	97.9,97.9
130	5.399	9.773	5.283	11.24					120-130	7.135	1323	98.4,98.4
140	5.518	19.76	5.437	15.50					130-140	7.185	1330	99,99
150	5.658	18.30	5.511	23.01					140-150	7.986	1338	99.6,99.6
160	5.882	6.404	5.786	6.741					150-160	3.095	1341	99.8,99.8
170	6.087	9.183	6.018	9.278					160-170	2.052	1343	100,100
180	6.176	6.369	6.184	6.354					170-180	0.6440	1344	100,100
DEG	LUMINOUS INTENSITY:cd									UNIT:lm		

Conical surface Flux(90deg): 548.68 lm

%lum = 40.8%

%lamp = 40.8%

Conical surface Flux(120deg): 847.64 lm

%lum = 63.1%

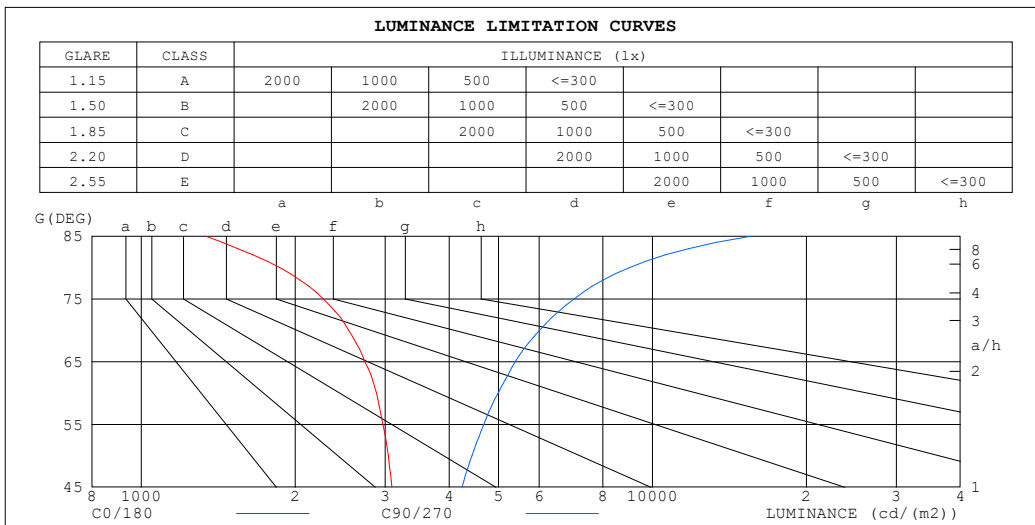
%lamp = 63.1%

C Range: 0 - 360DEG
 C Interval: 90.0DEG
 Test Speed: HIGH
 Temperature:25.3°C
 Operators:DAMIN
 Test Date:08 August 2025

γ Range: 0 - 180DEG
 γ Interval: 1.0DEG
 Test System:EVERFINE GO-2000B_V1 SYSTEM V2.00.459
 Humidity:65.0%
 Test Distance:7.380m [K=1.0000]
 Remarks:

LUMINANCE LIMITATION CURVES

Test:U:120.07V I:0.1830A P:20.242W PF:0.9212 Freq:59.98Hz Lamp Flux:1343.66x1 lm		
NAME: 62672LEDDCS	TYPE:	WEIGHT:
SPEC.:	DIM.:	SERIAL No.: 1
MFR.: EVERFINE	SUR.:	Shielding Angle:



LUMINANCE cd/(m2)		
G (DEG)	C0/180	C90/270
85	1337	15575
80	1866	9009
75	2270	7028
70	2546	6008
65	2735	5384
60	2884	4988
55	2971	4675
50	3041	4433
45	3091	4239

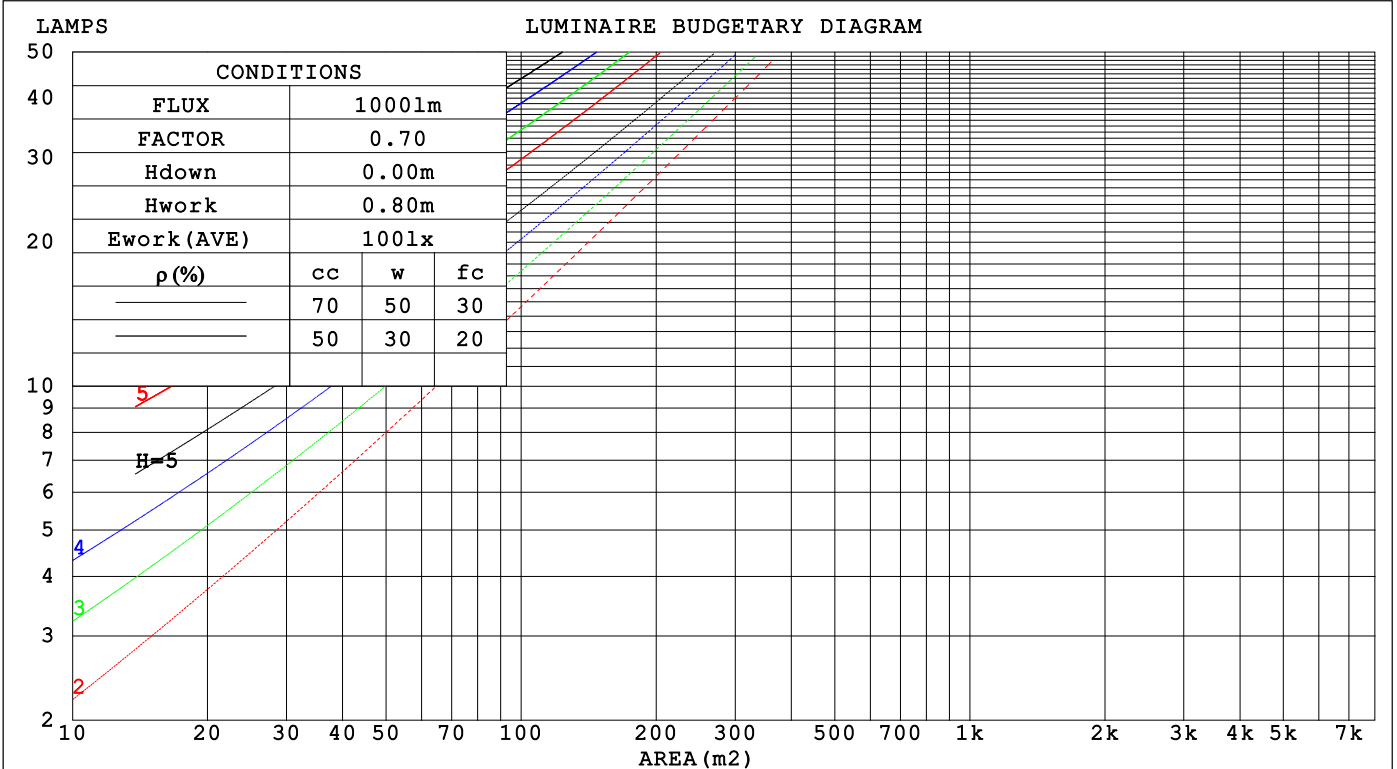
C Range: 0 - 360DEG
 C Interval: 90.0DEG
 Test Speed: HIGH
 Temperature:25.3 °C
 Operators:DAMIN
 Test Date:08 August 2025

γ Range: 0 - 180DEG
 γ Interval: 1.0DEG
 Test System:EVERFINE GO-2000B_V1 SYSTEM V2.00.459
 Humidity:65.0%
 Test Distance:7.380m [K=1.0000]
 Remarks:

CU AND LUMINAIRE BUDGETARY ESTIMATE DIAGRAM

Test:U:120.07V I:0.1830A P:20.242W PF:0.9212 Freq:59.98Hz Lamp Flux:1343.66x1 lm		
NAME: 62672LEDDCS	TYPE:	WEIGHT:
SPEC.:	DIM.:	SERIAL No.: 1
MFR.: EVERFINE	SUR.:	Shielding Angle:

pcc	80%			70%			50%			30%			10%			0
p _w	50%	30%	10%	50%	30%	10%	50%	30%	10%	50%	30%	10%	50%	30%	10%	0
p _{fc}	20%			20%			20%			20%			20%			0
RCR	RCR:Room Cavity Ratio Coefficients of Utilization(CU)															
0.0	1.17	1.17	1.17	1.13	1.13	1.13	1.07	1.07	1.07	1.00	1.00	1.00	.95	.95	.95	.92
1.0	.98	.93	.89	.95	.91	.86	.90	.86	.82	.84	.81	.78	.79	.77	.74	.72
2.0	.84	.77	.70	.82	.75	.69	.77	.71	.66	.72	.67	.63	.68	.64	.60	.58
3.0	.73	.64	.57	.71	.63	.56	.67	.60	.54	.63	.57	.52	.59	.54	.50	.47
4.0	.64	.55	.47	.62	.54	.47	.59	.51	.45	.55	.49	.44	.52	.47	.42	.40
5.0	.57	.47	.40	.55	.46	.40	.52	.44	.38	.49	.43	.37	.47	.41	.36	.34
6.0	.51	.42	.35	.50	.41	.34	.47	.39	.33	.44	.38	.32	.42	.36	.31	.29
7.0	.46	.37	.30	.45	.36	.30	.43	.35	.29	.40	.34	.28	.38	.32	.28	.25
8.0	.42	.33	.27	.41	.32	.27	.39	.31	.26	.37	.30	.25	.35	.29	.25	.23
9.0	.38	.30	.24	.37	.29	.24	.36	.28	.23	.34	.27	.23	.32	.26	.22	.20
10.0	.35	.27	.22	.34	.27	.21	.33	.26	.21	.31	.25	.20	.30	.24	.20	.18



C Range: 0 - 360DEG
 C Interval: 90.0DEG
 Test Speed: HIGH
 Temperature:25.3 °C
 Operators:DAMIN
 Test Date:08 August 2025

γ Range: 0 - 180DEG
 γ Interval: 1.0DEG
 Test System:EVERFINE GO-2000B_V1 SYSTEM V2.00.459
 Humidity:65.0%
 Test Distance:7.380m [K=1.0000]
 Remarks:

WEC AND CCEC

Test:U:120.07V I:0.1830A P:20.242W PF:0.9212 Freq:59.98Hz Lamp Flux:1343.66x1 lm		
NAME: 62672LEDDCS	TYPE:	WEIGHT:
SPEC.:	DIM.:	SERIAL No.: 1
MFR.: EVERFINE	SUR.:	Shielding Angle:

ρ_{CC}	80%			70%			50%			30%			10%			0
ρ_w	50%	30%	10%	50%	30%	10%	50%	30%	10%	50%	30%	10%	50%	30%	10%	0
ρ_{fc}	20%			20%			20%			20%			20%			0
RCR	RCR:Room Cavity Ratio						Wall Exitance Coefficients(WEC)									
0.0																
1.0	.376	.214	.068	.366	.209	.066	.348	.200	.064	.331	.191	.061	.316	.183	.059	
2.0	.331	.182	.056	.323	.178	.055	.306	.170	.053	.291	.163	.051	.277	.157	.049	
3.0	.297	.158	.047	.289	.155	.047	.274	.149	.045	.261	.143	.044	.248	.138	.043	
4.0	.269	.140	.041	.262	.137	.040	.248	.132	.039	.236	.127	.038	.225	.122	.037	
5.0	.245	.125	.036	.239	.122	.036	.227	.118	.035	.216	.114	.034	.205	.110	.033	
6.0	.225	.113	.032	.219	.111	.032	.208	.107	.031	.198	.103	.030	.189	.100	.030	
7.0	.207	.103	.029	.202	.101	.029	.193	.097	.028	.184	.094	.027	.175	.091	.027	
8.0	.193	.094	.026	.188	.093	.026	.179	.090	.026	.171	.087	.025	.163	.084	.024	
9.0	.180	.087	.024	.175	.085	.024	.167	.083	.023	.160	.080	.023	.153	.078	.022	
10.0	.168	.081	.022	.164	.079	.022	.157	.077	.022	.150	.074	.021	.143	.072	.021	

ρ_{CC}	80%			70%			50%			30%			10%			0
ρ_w	50%	30%	10%	50%	30%	10%	50%	30%	10%	50%	30%	10%	50%	30%	10%	0
ρ_{fc}	20%			20%			20%			20%			20%			0
RCR	RCR:Room Cavity Ratio						Ceiling Cavity Exitance Coefficients(CCEC)									
0.0	.252	.252	.252	.215	.215	.215	.147	.147	.147	.084	.084	.084	.027	.027	.027	
1.0	.247	.218	.191	.211	.187	.165	.145	.129	.114	.083	.074	.066	.027	.024	.021	
2.0	.240	.194	.156	.206	.167	.135	.141	.116	.094	.081	.067	.055	.026	.022	.018	
3.0	.233	.177	.133	.199	.153	.116	.137	.106	.081	.079	.062	.048	.025	.020	.016	
4.0	.225	.165	.119	.193	.142	.103	.133	.099	.073	.077	.058	.043	.025	.019	.014	
5.0	.217	.155	.108	.186	.134	.094	.128	.093	.067	.074	.055	.040	.024	.018	.013	
6.0	.210	.146	.101	.180	.127	.088	.124	.089	.062	.072	.052	.037	.023	.017	.012	
7.0	.202	.140	.096	.174	.121	.083	.120	.085	.059	.070	.050	.035	.023	.016	.012	
8.0	.196	.134	.092	.168	.116	.080	.117	.082	.057	.068	.048	.034	.022	.016	.011	
9.0	.189	.129	.089	.163	.112	.077	.113	.079	.055	.066	.047	.033	.021	.015	.011	
10.0	.183	.125	.086	.158	.108	.075	.110	.076	.053	.064	.045	.032	.021	.015	.011	

C Range: 0 - 360DEG
 C Interval: 90.0DEG
 Test Speed: HIGH
 Temperature:25.3°C
 Operators:DAMIN
 Test Date:08 August 2025

γ Range: 0 - 180DEG
 γ Interval: 1.0DEG
 Test System:EVERFINE GO-2000B_V1 SYSTEM V2.00.459
 Humidity:65.0%
 Test Distance:7.380m [K=1.0000]
 Remarks:

UGR(Unified Glare Rating) Table

Test:U:120.07V I:0.1830A P:20.242W PF:0.9212 Freq:59.98Hz										
Lamp Flux:1343.66x1 lm										
NAME: 62672LEDDCS					TYPE:			WEIGHT:		
SPEC.:					DIM.:			SERIAL No.: 1		
MFR.: EVERFINE					SUR.:			Shielding Angle:		
ceiling/cavity	0.7	0.7	0.5	0.5	0.3	0.7	0.7	0.5	0.5	0.3
walls	0.5	0.3	0.5	0.3	0.3	0.5	0.3	0.5	0.3	0.3
working plane	0.2	0.2	0.2	0.2	0.2	0.2	0.2	0.2	0.2	0.2
Room dimensions	Viewed crosswise					Viewed endwise				
x = 2H y = 2H	15.0	16.5	15.4	16.9	17.3	17.0	18.5	17.4	18.9	19.2
3H	16.5	17.9	16.9	18.3	18.7	19.5	20.9	19.9	21.3	21.7
4H	17.1	18.4	17.5	18.8	19.2	20.8	22.1	21.2	22.5	23.0
6H	17.4	18.7	17.9	19.1	19.6	22.2	23.4	22.6	23.9	24.3
8H	17.5	18.8	18.0	19.2	19.7	22.9	24.1	23.4	24.6	25.0
12H	17.6	18.7	18.0	19.2	19.7	23.8	25.0	24.3	25.4	25.9
4H 2H	16.1	17.4	16.5	17.8	18.2	17.5	18.9	18.0	19.3	19.7
3H	17.8	19.0	18.3	19.4	19.9	20.2	21.4	20.7	21.8	22.3
4H	18.5	19.6	19.0	20.1	20.6	21.7	22.7	22.2	23.2	23.7
6H	19.1	20.0	19.6	20.5	21.1	23.2	24.2	23.8	24.7	25.2
8H	19.2	20.1	19.8	20.7	21.2	24.1	25.0	24.7	25.5	26.1
12H	19.3	20.2	19.9	20.7	21.3	25.1	26.0	25.7	26.5	27.1
8H 4H	19.3	20.2	19.9	20.7	21.3	21.9	22.8	22.4	23.3	23.9
6H	20.2	20.9	20.7	21.5	22.1	23.7	24.5	24.3	25.0	25.6
8H	20.5	21.2	21.1	21.7	22.4	24.8	25.5	25.4	26.0	26.7
12H	20.7	21.3	21.3	21.9	22.6	26.1	26.7	26.7	27.2	27.9
12H 4H	19.5	20.4	20.1	20.9	21.5	21.9	22.8	22.5	23.3	23.9
6H	20.5	21.2	21.1	21.8	22.4	23.8	24.5	24.4	25.1	25.7
8H	21.0	21.6	21.6	22.2	22.8	24.9	25.5	25.5	26.1	26.8
Variations with the observer position at spacings(CIE Pub.117):										
S = 1.0H	+ 0.1 / - 0.2					+ 0.1 / - 0.1				
1.5H	+ 0.2 / - 0.3					+ 0.2 / - 0.2				
2.0H	+ 0.2 / - 0.5					+ 0.2 / - 0.3				

CIE Pub.117, 1344 lm Total Lamp Luminous Flux Correct (8log(F/F0) = 1.0)
 Area: 0.1 m2

C Range: 0 - 360DEG	γ Range: 0 - 180DEG
C Interval: 90.0DEG	γ Interval: 1.0DEG
Test Speed: HIGH	Test System:EVERFINE GO-2000B_V1 SYSTEM V2.00.459
Temperature:25.3℃	Humidity:65.0%
Operators:DAMIN	Test Distance:7.380m [K=1.0000]
Test Date:08 August 2025	Remarks:

UTILIZATION FACTORS TABLE

Test:U:120.07V I:0.1830A P:20.242W PF:0.9212 Freq:59.98Hz Lamp Flux:1343.66x1 lm		
NAME: 62672LEDDCS	TYPE:	WEIGHT:
SPEC.:	DIM.:	SERIAL No.: 1
MFR.: EVERFINE	SUR.:	Shielding Angle:

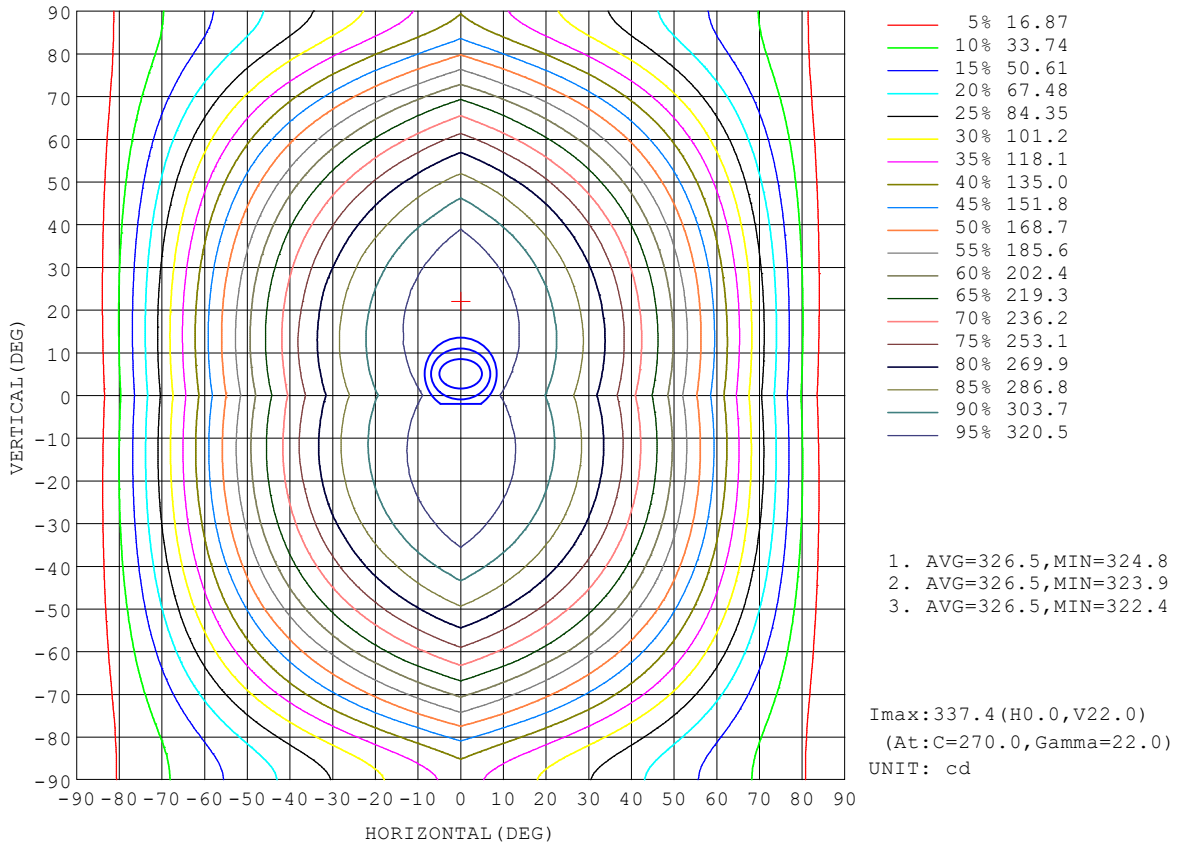
REFLECTANCE										
Ceiling	0.8	0.8	0.8	0.7	0.7	0.7	0.5	0.5	0.5	0
Walls	0.7	0.5	0.3	0.7	0.5	0.3	0.7	0.5	0.3	0
Working plane	0.2	0.2	0.2	0.2	0.2	0.2	0.2	0.2	0.2	0
ROOM INDEX	UTILIZATION FACTORS (PERCENT) $k(RI) \times RCR = 5$									
$k = 0.60$	51	39	31	50	38	31	48	38	31	24
0.80	60	48	40	59	47	39	57	46	39	31
1.00	68	56	48	67	55	47	64	56	47	38
1.25	75	63	55	74	62	55	70	60	53	45
1.50	81	69	61	78	68	60	75	65	59	49
2.00	88	77	70	85	76	69	81	73	67	57
2.50	92	83	75	90	81	74	85	77	71	61
3.00	96	87	80	93	85	79	88	81	76	65
4.00	100	93	87	97	91	85	92	86	82	70
5.00	103	97	92	100	94	89	94	90	85	73
ROOM INDEX	UF(total)									Direct
According to DIN EN 13032-2 2004			Suspended				SHRNOM = 1.25			

C Range: 0 - 360DEG
 C Interval: 90.0DEG
 Test Speed: HIGH
 Temperature:25.3°C
 Operators:DAMIN
 Test Date:08 August 2025

γ Range: 0 - 180DEG
 γ Interval: 1.0DEG
 Test System:EVERFINE GO-2000B_V1 SYSTEM V2.00.459
 Humidity:65.0%
 Test Distance:7.380m [K=1.0000]
 Remarks:

ISOCANDELA DIAGRAM

Test:U:120.07V I:0.1830A P:20.242W PF:0.9212 Freq:59.98Hz Lamp Flux:1343.66x1 lm		
NAME: 62672LEDDCS	TYPE:	WEIGHT:
SPEC.:	DIM.:	SERIAL No.: 1
MFR.: EVERFINE	SUR.:	Shielding Angle:

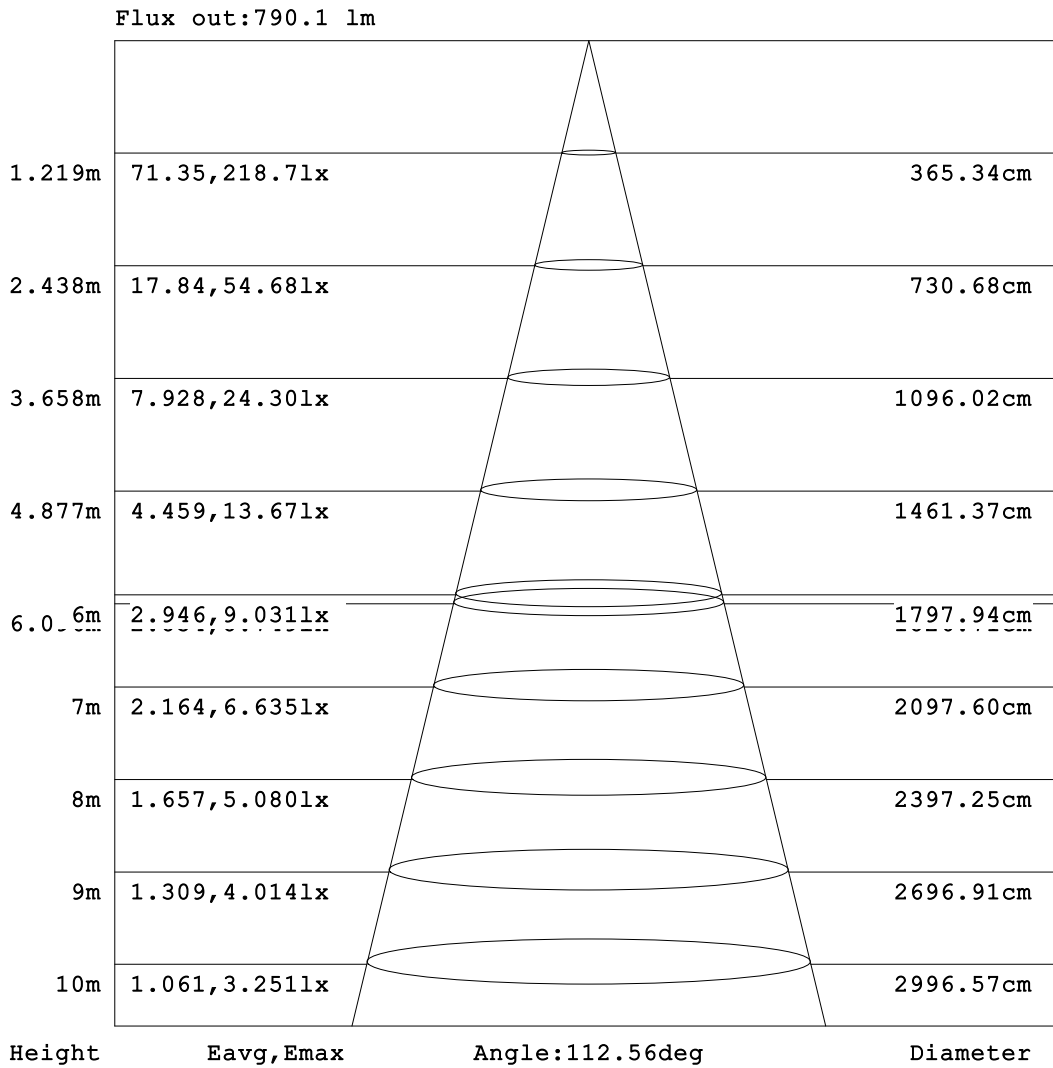


C Range: 0 - 360DEG
C Interval: 90.0DEG
Test Speed: HIGH
Temperature: 25.3 °C
Operators: DAMIN
Test Date: 08 August 2025

γ Range: 0 - 180DEG
γ Interval: 1.0DEG
Test System: EVERFINE GO-2000B_V1 SYSTEM V2.00.459
Humidity: 65.0%
Test Distance: 7.380m [K=1.0000]
Remarks:

AAI Figure

Test:U:120.07V I:0.1830A P:20.242W PF:0.9212 Freq:59.98Hz Lamp Flux:1343.66lx1 lm		
NAME: 62672LEDDCS	TYPE:	WEIGHT:
SPEC.:	DIM.:	SERIAL No.: 1
MFR.: EVERFINE	SUR.:	Shielding Angle:



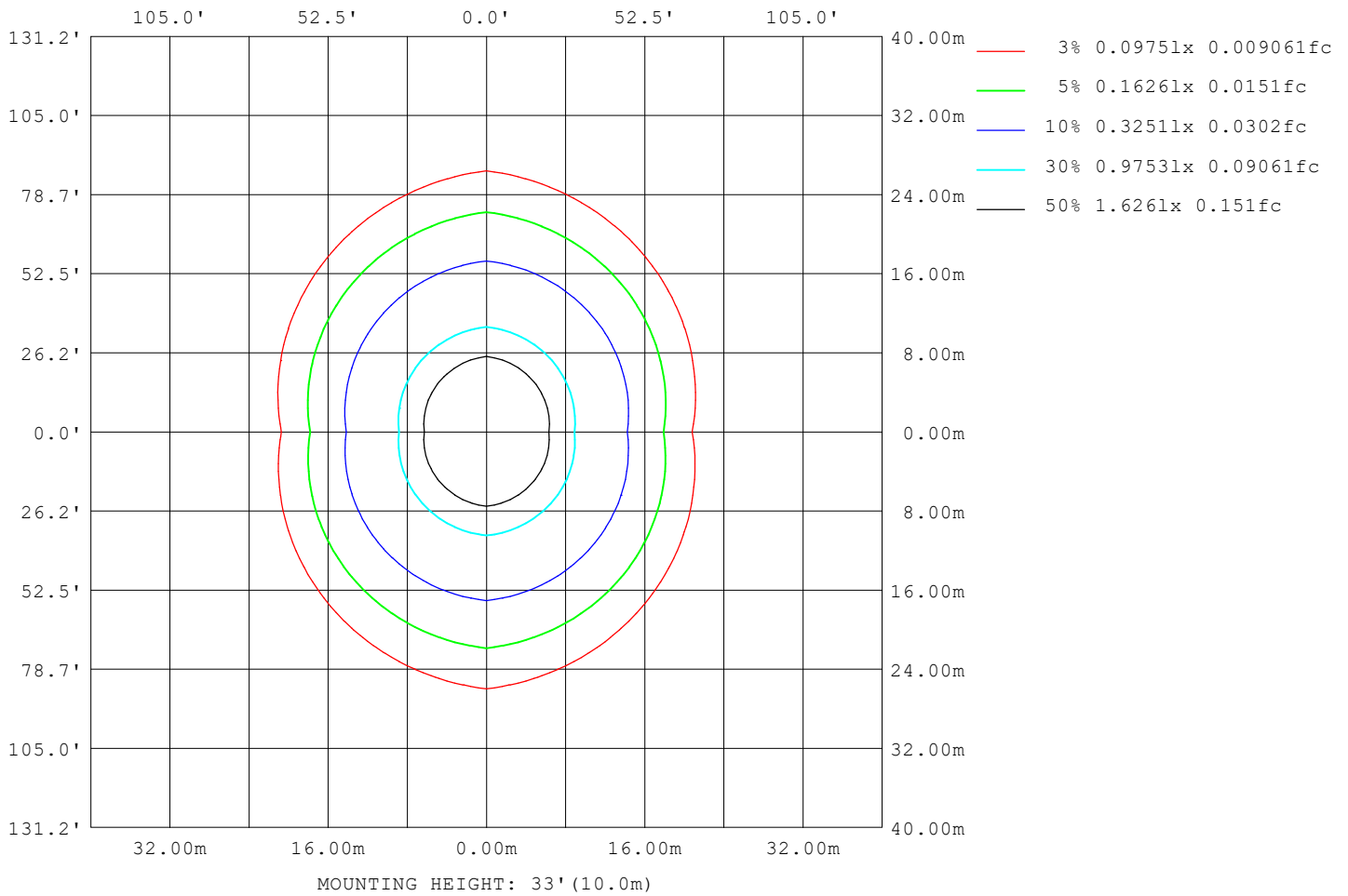
Note:The Curves indicate the illuminated area and the average illumination when the luminaire is at different distance.

C Range: 0 - 360DEG
C Interval: 90.0DEG
Test Speed: HIGH
Temperature:25.3 °C
Operators:DAMIN
Test Date:08 August 2025

γ Range: 0 - 180DEG
γ Interval: 1.0DEG
Test System:EVERFINE GO-2000B_V1 SYSTEM V2.00.459
Humidity:65.0%
Test Distance:7.380m [K=1.0000]
Remarks:

ISOLUX DIAGRAM

Test:U:120.07V I:0.1830A P:20.242W PF:0.9212 Freq:59.98Hz Lamp Flux:1343.66x1 lm		
NAME: 62672LEDDCS	TYPE:	WEIGHT:
SPEC.:	DIM.:	SERIAL No.: 1
MFR.: EVERFINE	SUR.:	Shielding Angle:



C Range: 0 - 360DEG
 C Interval: 90.0DEG
 Test Speed: HIGH
 Temperature:25.3 °C
 Operators:DAMIN
 Test Date:08 August 2025

γ Range: 0 - 180DEG
 γ Interval: 1.0DEG
 Test System:EVERFINE GO-2000B_V1 SYSTEM V2.00.459
 Humidity:65.0%
 Test Distance:7.380m [K=1.0000]
 Remarks:

LED Avg.L Report

Test:U:120.07V I:0.1830A P:20.242W PF:0.9212 Freq:59.98Hz Lamp Flux:1343.66x1 lm		
NAME: 62672LEDDCS	TYPE:	WEIGHT:
SPEC.:	DIM.:	SERIAL No.: 1
MFR.: EVERFINE	SUR.:	Shielding Angle:

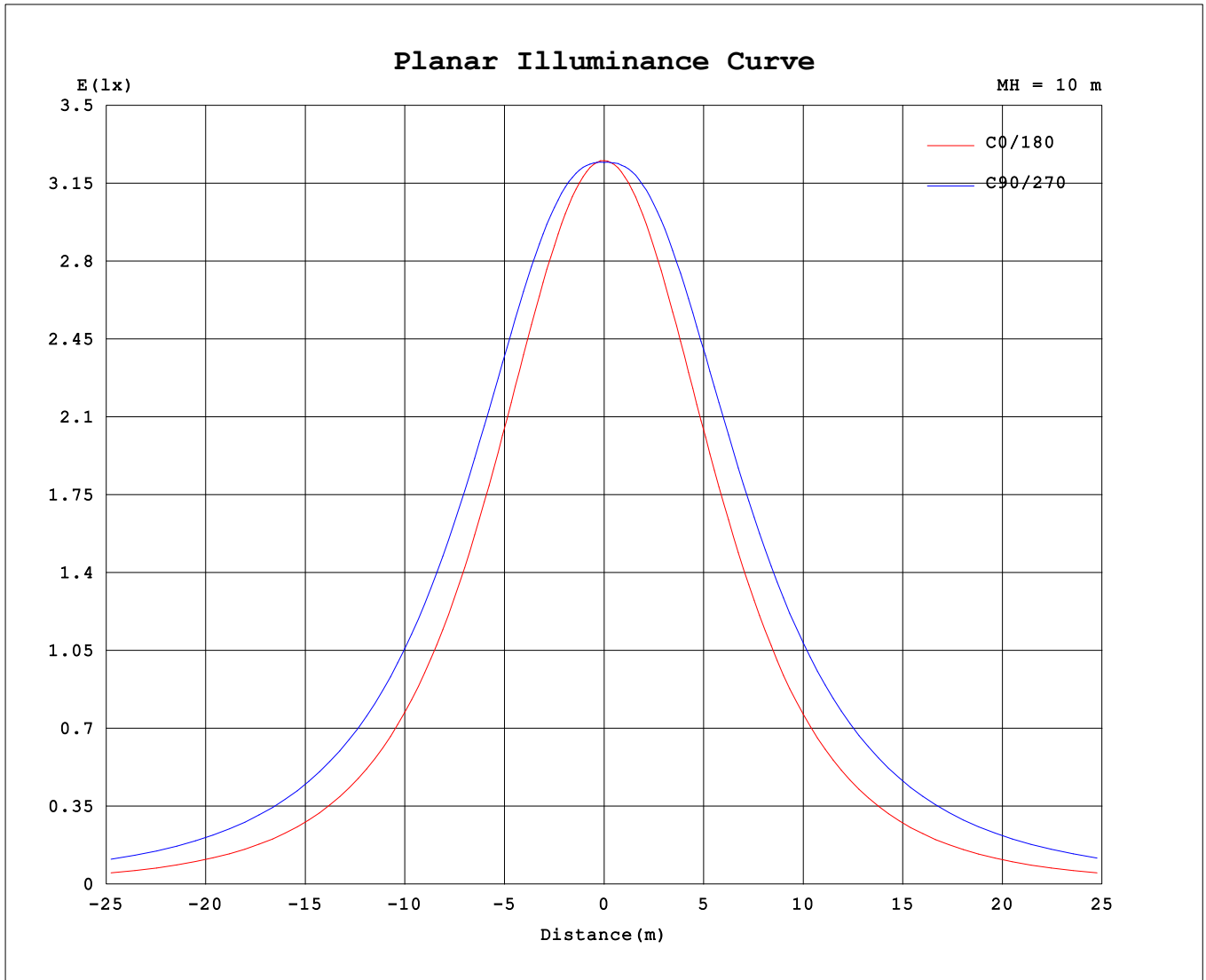
AvgL	cd/m2
L_0~180 (65) av	2723
L_0~180 (75) av	2260
L_0~180 (85) av	1321
L_90~270 (65) av	5509
L_90~270 (75) av	7221
L_90~270 (85) av	16169
L_45 (65) av	4464
L_45 (75) av	5360
L_45 (85) av	10600

Standard: GB/T 29293-2012

C Range: 0 - 360DEG
 C Interval: 90.0DEG
 Test Speed: HIGH
 Temperature:25.3℃
 Operators:DAMIN
 Test Date:08 August 2025

γ Range: 0 - 180DEG
 γ Interval: 1.0DEG
 Test System:EVERFINE GO-2000B_V1 SYSTEM V2.00.459
 Humidity:65.0%
 Test Distance:7.380m [K=1.0000]
 Remarks:

Planar Illuminance Curve



C Range: 0 - 360DEG
 C Interval: 90.0DEG
 Test Speed: HIGH
 Temperature: 25.3 °C
 Operators: DAMIN
 Test Date: 08 August 2025

γ Range: 0 - 180DEG
 γ Interval: 1.0DEG
 Test System: EVERFINE GO-2000B_V1 SYSTEM V2.00.459
 Humidity: 65.0%
 Test Distance: 7.380m [K=1.0000]
 Remarks:

LUMINOUS DISTRIBUTION INTENSITY DATA

Test:U:120.07V I:0.1830A P:20.242W PF:0.9212 Freq:59.98Hz Lamp Flux:1343.66x1 lm		
NAME: 62672LEDDCS	TYPE:	WEIGHT:
SPEC.:	DIM.:	SERIAL No.: 1
MFR.: EVERFINE	SUR.:	Shielding Angle:

Table--1

UNIT: cd

C (DEG) \ γ (DEG)	0	90	180	270																
0	325	324	325	324																
5	324	327	324	327																
10	320	331	319	331																
15	313	334	312	335																
20	303	335	302	337																
25	291	333	290	337																
30	276	328	275	333																
35	259	322	258	327																
40	240	312	239	318																
45	219	300	216	307																
50	195	285	193	293																
55	170	268	168	277																
60	144	249	142	258																
65	116	228	115	238																
70	87.1	205	86.4	216																
75	58.7	182	58.3	192																
80	32.4	156	32.0	168																
85	11.7	136	11.4	146																
90	4.49	125	4.25	134																
95	4.41	82.7	4.19	93.8																
100	4.44	42.0	4.31	40.1																
105	4.62	27.6	4.56	31.2																
110	4.86	28.3	4.85	24.4																
115	5.07	13.2	5.00	16.2																
120	5.29	10.4	5.13	12.6																
125	5.43	9.39	5.22	11.5																
130	5.40	9.77	5.28	11.2																
135	5.42	13.3	5.39	12.6																
140	5.52	19.8	5.44	15.5																
145	5.59	25.6	5.45	19.2																
150	5.66	18.3	5.51	23.0																
155	5.74	6.43	5.65	6.61																
160	5.88	6.40	5.79	6.74																
165	5.99	10.8	5.93	9.99																
170	6.09	9.18	6.02	9.28																
175	6.13	6.35	6.11	6.38																
180	6.18	6.37	6.18	6.35																

C Range: 0 - 360DEG
 C Interval: 90.0DEG
 Test Speed: HIGH
 Temperature:25.3℃
 Operators:DAMIN
 Test Date:08 August 2025

γ Range: 0 - 180DEG
 γ Interval: 1.0DEG
 Test System:EVERFINE GO-2000B_V1 SYSTEM V2.00.459
 Humidity:65.0%
 Test Distance:7.380m [K=1.0000]
 Remarks: