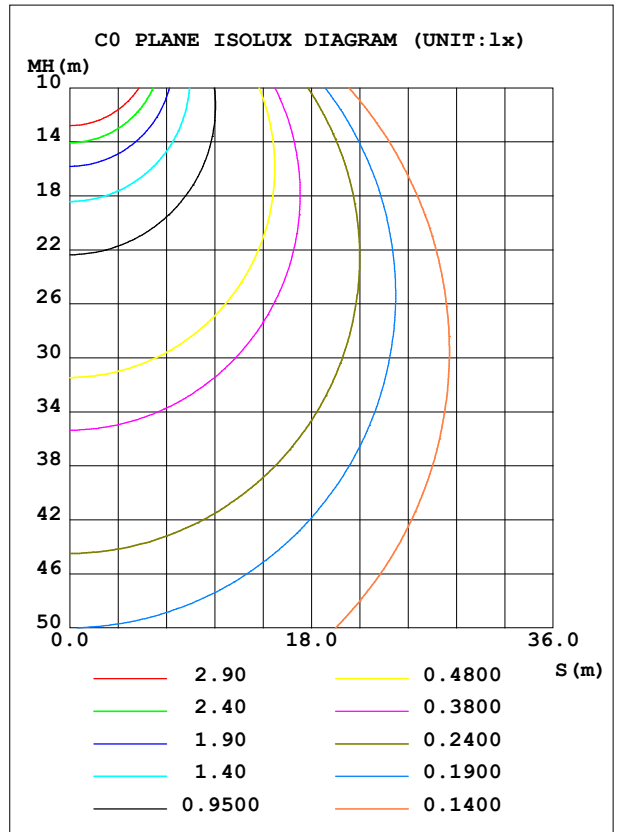
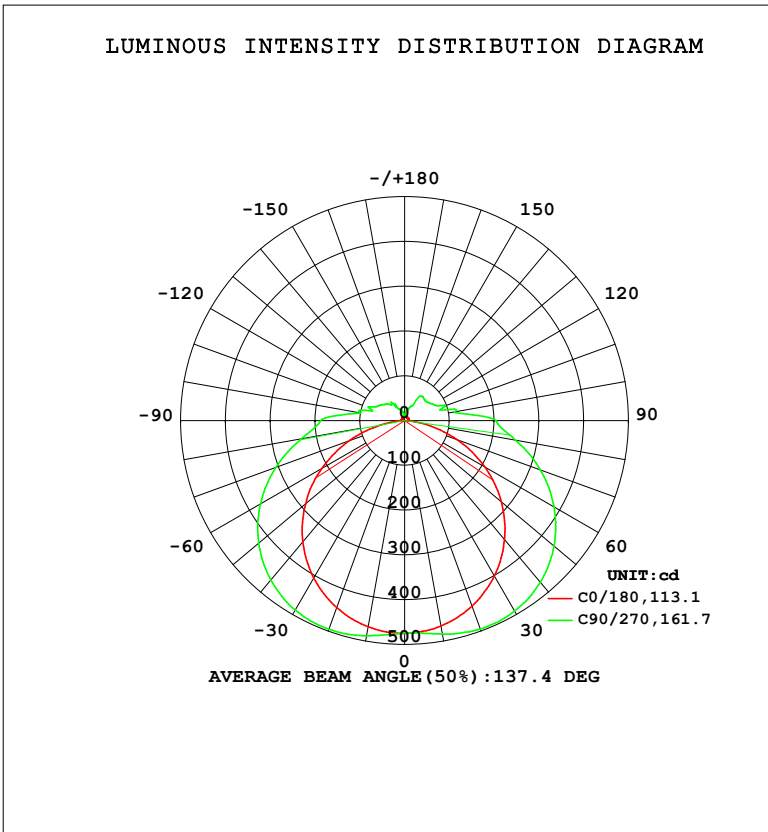


LUMINAIRE PHOTOMETRIC TEST REPORT

|  |       |                  |
|--|-------|------------------|
| Test:U:120.03V I:0.2429A P:27.273W PF:0.9355 Freq:59.98Hz<br>Lamp Flux:2107.2x1 lm |       |                  |
| NAME: 62674LEDDCS  | TYPE: | WEIGHT:          |
| SPEC.:   | DIM.: | SERIAL No.: 1    |
| MFR.: EVERFINE   | SUR.: | Shielding Angle: |

| DATA OF LAMP      |        | PHOTOMETRIC DATA      |         |                     |           | Eff: 77.26 lm/W |
|-------------------|--------|-----------------------|---------|---------------------|-----------|-----------------|
| MODEL             | 3000K  | I <sub>max</sub> (cd) | 495.9   | S/MH (C0/180)       | 1.27      |                 |
| NOMINAL POWER (W) | 27     | LOR (%)               | 100.0   | S/MH (C90/270)      | 1.53      |                 |
| RATED VOLTAGE (V) | 120    | TOTAL FLUX (lm)       | 2107.2  | η UP, DN (C0-180)   | 7.0, 43.6 |                 |
| NOMINAL FLUX (lm) | 2107.2 | CIE CLASS             | SEMI-D. | η UP, DN (C180-360) | 6.2, 43.2 |                 |
| LAMPS INSIDE      | 1      | η up (%)              | 13.2    | CIBSE SHR NOM       | 1.50      |                 |
| TEST VOLTAGE (V)  | 120    | η down (%)            | 86.8    | CIBSE SHR MAX       | 1.55      |                 |



C Range: 0 - 360DEG  
 C Interval: 90.0DEG  
 Test Speed: HIGH  
 Temperature: 25.3 °C  
 Operators: DAMIN  
 Test Date: 08 August 2025

γ Range: 0 - 180DEG  
 γ Interval: 1.0DEG  
 Test System: EVERFINE GO-2000B\_V1 SYSTEM V2.00.459  
 Humidity: 65.0%  
 Test Distance: 7.380m [K=1.0000]  
 Remarks:

ZONAL FLUX DIAGRAM

ZONAL FLUX DIAGRAM:

| $\gamma$ | C0                    | C90   | C180  | C270  |  |  |  | $\gamma$ | $\Phi$ zone | $\Phi$ total | %lum,lamp |
|----------|-----------------------|-------|-------|-------|--|--|--|----------|-------------|--------------|-----------|
| 10       | 465.9                 | 484.0 | 467.7 | 487.8 |  |  |  | 0- 10    | 45.43       | 45.43        | 2.16,2.16 |
| 20       | 440.7                 | 495.0 | 444.2 | 495.9 |  |  |  | 10- 20   | 134.2       | 179.6        | 8.52,8.52 |
| 30       | 400.6                 | 491.1 | 406.0 | 488.5 |  |  |  | 20- 30   | 212.1       | 391.8        | 18.6,18.6 |
| 40       | 347.1                 | 471.3 | 353.7 | 464.7 |  |  |  | 30- 40   | 269.1       | 660.8        | 31.4,31.4 |
| 50       | 282.0                 | 435.7 | 289.0 | 425.4 |  |  |  | 40- 50   | 297.4       | 958.2        | 45.5,45.5 |
| 60       | 206.9                 | 385.3 | 212.9 | 371.6 |  |  |  | 50- 60   | 292.9       | 1251         | 59.4,59.4 |
| 70       | 124.4                 | 322.7 | 130.9 | 306.2 |  |  |  | 60- 70   | 256.0       | 1507         | 71.5,71.5 |
| 80       | 44.89                 | 251.6 | 50.22 | 233.7 |  |  |  | 70- 80   | 192.8       | 1700         | 80.7,80.7 |
| 90       | 6.903                 | 205.1 | 6.601 | 187.7 |  |  |  | 80- 90   | 128.3       | 1828         | 86.8,86.8 |
| 100      | 7.134                 | 113.5 | 6.811 | 99.43 |  |  |  | 90-100   | 85.80       | 1914         | 90.8,90.8 |
| 110      | 8.147                 | 97.78 | 7.739 | 84.71 |  |  |  | 100-110  | 54.65       | 1969         | 93.4,93.4 |
| 120      | 8.643                 | 73.69 | 7.928 | 67.25 |  |  |  | 110-120  | 43.39       | 2012         | 95.5,95.5 |
| 130      | 8.825                 | 65.35 | 8.199 | 57.04 |  |  |  | 120-130  | 33.24       | 2045         | 97.1,97.1 |
| 140      | 8.976                 | 66.42 | 8.404 | 46.50 |  |  |  | 130-140  | 26.06       | 2071         | 98.3,98.3 |
| 150      | 9.022                 | 52.79 | 8.578 | 42.36 |  |  |  | 140-150  | 20.10       | 2092         | 99.3,99.3 |
| 160      | 9.293                 | 30.28 | 8.961 | 24.69 |  |  |  | 150-160  | 9.832       | 2101         | 99.7,99.7 |
| 170      | 9.699                 | 21.10 | 9.475 | 16.08 |  |  |  | 160-170  | 4.747       | 2106         | 99.9,99.9 |
| 180      | 9.823                 | 9.687 | 9.819 | 9.676 |  |  |  | 170-180  | 1.121       | 2107         | 100,100   |
| DEG      | LUMINOUS INTENSITY:cd |       |       |       |  |  |  |          | UNIT:lm     |              |           |

Conical surface Flux(90deg): 808 lm

%lum = 38.3%

%lamp = 38.3%

Conical surface Flux(120deg): 1251.2 lm

%lum = 59.4%

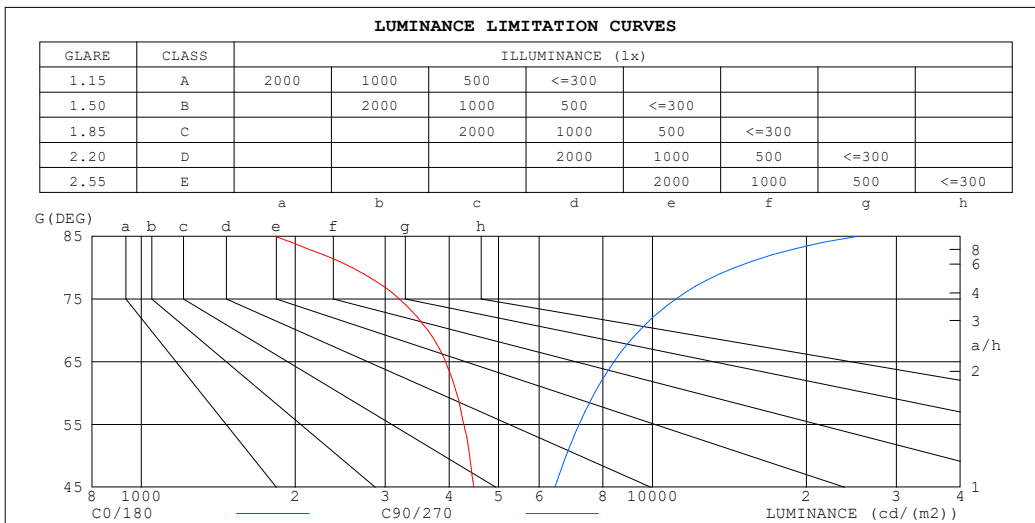
%lamp = 59.4%

C Range: 0 - 360DEG  
 C Interval: 90.0DEG  
 Test Speed: HIGH  
 Temperature:25.3°C  
 Operators:DAMIN  
 Test Date:08 August 2025

$\gamma$  Range: 0 - 180DEG  
 $\gamma$  Interval: 1.0DEG  
 Test System:EVERFINE GO-2000B\_V1 SYSTEM V2.00.459  
 Humidity:65.0%  
 Test Distance:7.380m [K=1.0000]  
 Remarks:

**LUMINANCE LIMITATION CURVES**

|  |       |                  |
|--|-------|------------------|
| Test:U:120.03V I:0.2429A P:27.273W PF:0.9355 Freq:59.98Hz<br>Lamp Flux:2107.2x1 lm |       |                  |
| NAME: 62674LEDDCS  | TYPE: | WEIGHT:          |
| SPEC.:   | DIM.: | SERIAL No.: 1    |
| MFR.: EVERFINE   | SUR.: | Shielding Angle: |



| LUMINANCE cd/(m2) |        |         |
|-------------------|--------|---------|
| G (DEG)           | C0/180 | C90/270 |
| 85                | 1824   | 25206   |
| 80                | 2585   | 14488   |
| 75                | 3196   | 11119   |
| 70                | 3637   | 9434    |
| 65                | 3937   | 8412    |
| 60                | 4138   | 7705    |
| 55                | 4278   | 7187    |
| 50                | 4387   | 6779    |
| 45                | 4470   | 6443    |

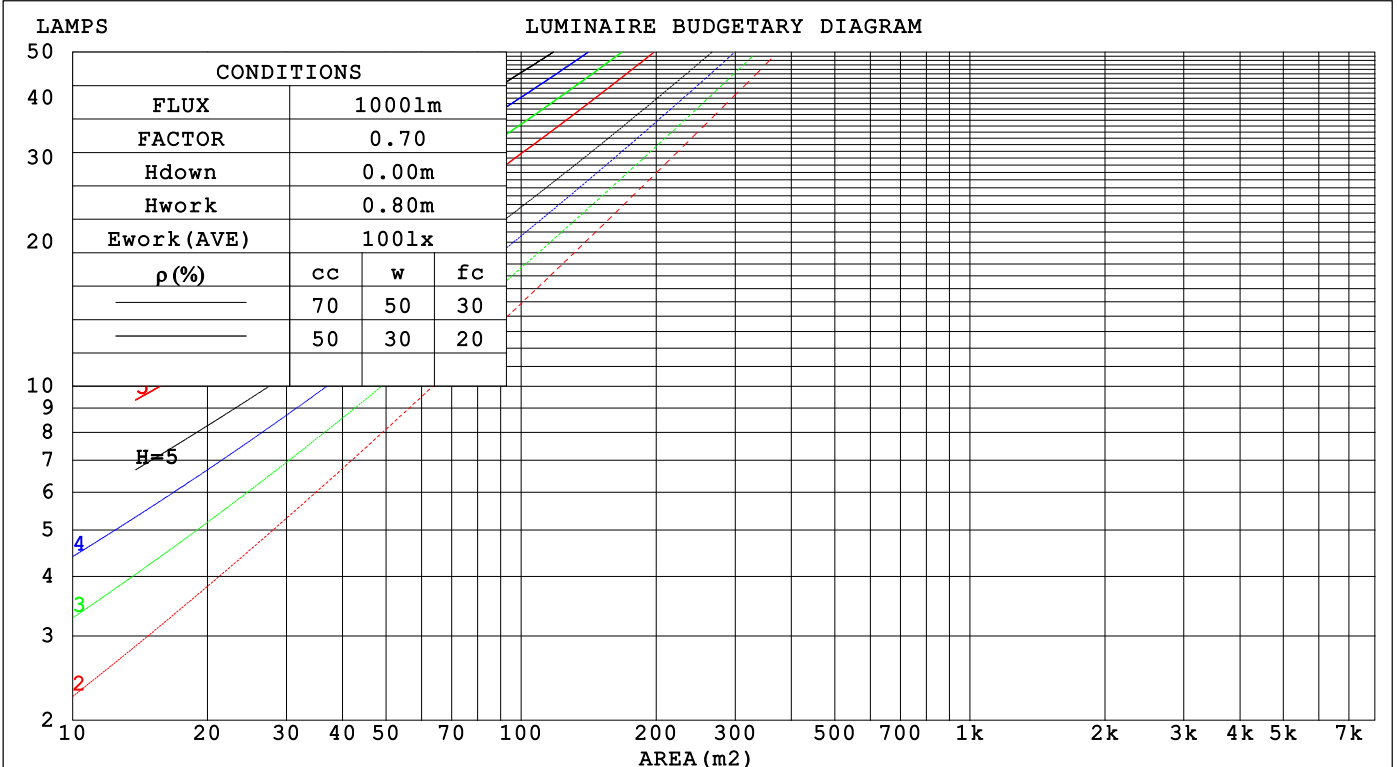
C Range: 0 - 360DEG  
 C Interval: 90.0DEG  
 Test Speed: HIGH  
 Temperature:25.3 °C  
 Operators:DAMIN  
 Test Date:08 August 2025

γ Range: 0 - 180DEG  
 γ Interval: 1.0DEG  
 Test System:EVERFINE GO-2000B\_V1 SYSTEM V2.00.459  
 Humidity:65.0%  
 Test Distance:7.380m [K=1.0000]  
 Remarks:

CU AND LUMINAIRE BUDGETARY ESTIMATE DIAGRAM

|  |       |                  |
|--|-------|------------------|
| Test:U:120.03V I:0.2429A P:27.273W PF:0.9355 Freq:59.98Hz<br>Lamp Flux:2107.2x1 lm |       |                  |
| NAME: 62674LEDDCS  | TYPE: | WEIGHT:          |
| SPEC.:   | DIM.: | SERIAL No.: 1    |
| MFR.: EVERFINE   | SUR.: | Shielding Angle: |

|             |  |      |      |      |      |      |      |      |      |     |     |     |     |     |     |     |
|-------------|--|------|------|------|------|------|------|------|------|-----|-----|-----|-----|-----|-----|-----|
| $\rho_{cc}$ | 80%  |      |      | 70%  |      |      | 50%  |      |      | 30% |     |     | 10% |     |     | 0   |
| $\rho_w$    | 50%  | 30%  | 10%  | 50%  | 30%  | 10%  | 50%  | 30%  | 10%  | 50% | 30% | 10% | 50% | 30% | 10% | 0   |
| $\rho_{fc}$ | 20%  |      |      | 20%  |      |      | 20%  |      |      | 20% |     |     | 20% |     |     | 0   |
| RCR         | RCR:Room Cavity Ratio      Coefficients of Utilization(CU) |      |      |      |      |      |      |      |      |     |     |     |     |     |     |     |
| 0.0         | 1.16   | 1.16 | 1.16 | 1.12 | 1.12 | 1.12 | 1.04 | 1.04 | 1.04 | .97 | .97 | .97 | .90 | .90 | .90 | .87 |
| 1.0         | .98  | .92  | .88  | .94  | .89  | .85  | .87  | .83  | .80  | .81 | .78 | .75 | .75 | .73 | .71 | .67 |
| 2.0         | .84  | .76  | .69  | .81  | .73  | .68  | .75  | .69  | .64  | .69 | .65 | .60 | .64 | .61 | .57 | .54 |
| 3.0         | .73  | .64  | .56  | .70  | .62  | .55  | .65  | .58  | .52  | .60 | .55 | .50 | .56 | .51 | .47 | .44 |
| 4.0         | .64  | .54  | .47  | .61  | .53  | .46  | .57  | .50  | .44  | .53 | .47 | .42 | .50 | .44 | .40 | .37 |
| 5.0         | .56  | .47  | .40  | .55  | .46  | .39  | .51  | .43  | .37  | .47 | .41 | .36 | .44 | .39 | .34 | .32 |
| 6.0         | .51  | .41  | .34  | .49  | .40  | .34  | .46  | .38  | .32  | .43 | .36 | .31 | .40 | .34 | .30 | .27 |
| 7.0         | .46  | .36  | .30  | .44  | .36  | .30  | .41  | .34  | .28  | .39 | .32 | .27 | .36 | .31 | .26 | .24 |
| 8.0         | .41  | .33  | .27  | .40  | .32  | .26  | .38  | .30  | .25  | .35 | .29 | .24 | .33 | .28 | .23 | .21 |
| 9.0         | .38  | .29  | .24  | .37  | .29  | .23  | .35  | .27  | .22  | .33 | .26 | .22 | .31 | .25 | .21 | .19 |
| 10.0        | .35  | .27  | .21  | .34  | .26  | .21  | .32  | .25  | .20  | .30 | .24 | .20 | .28 | .23 | .19 | .17 |



C Range: 0 - 360DEG  
 C Interval: 90.0DEG  
 Test Speed: HIGH  
 Temperature:25.3 °C  
 Operators:DAMIN  
 Test Date:08 August 2025

$\gamma$  Range: 0 - 180DEG  
 $\gamma$  Interval: 1.0DEG  
 Test System:EVERFINE GO-2000B\_V1 SYSTEM V2.00.459  
 Humidity:65.0%  
 Test Distance:7.380m [K=1.0000]  
 Remarks:

WEC AND CCEC

|   |       |                  |
|---|-------|------------------|
| Test:U:120.03V I:0.2429A P:27.273W PF:0.9355 Freq:59.98Hz |       |                  |
| Lamp Flux:2107.2x1 lm                                     |       |                  |
| NAME: 62674LEDDCS   | TYPE: | WEIGHT:          |
| SPEC.:  | DIM.: | SERIAL No.: 1    |
| MFR.: EVERFINE  | SUR.: | Shielding Angle: |

| $\rho_{CC}$ | 80%                   |      |      | 70%  |      |      | 50%                             |      |      | 30%  |      |      | 10%  |      |      | 0 |
|-------------|-----------------------|------|------|------|------|------|---------------------------------|------|------|------|------|------|------|------|------|---|
| $\rho_w$    | 50%                   | 30%  | 10%  | 50%  | 30%  | 10%  | 50%                             | 30%  | 10%  | 50%  | 30%  | 10%  | 50%  | 30%  | 10%  | 0 |
| $\rho_{fc}$ | 20%                   |      |      | 20%  |      |      | 20%                             |      |      | 20%  |      |      | 20%  |      |      | 0 |
| RCR         | RCR:Room Cavity Ratio |      |      |      |      |      | Wall Exitance Coefficients(WEC) |      |      |      |      |      |      |      |      |   |
| 0.0         |                       |      |      |      |      |      |                                 |      |      |      |      |      |      |      |      |   |
| 1.0         | .370                  | .211 | .067 | .359 | .205 | .065 | .338                            | .194 | .062 | .319 | .184 | .059 | .301 | .174 | .056 |   |
| 2.0         | .327                  | .179 | .055 | .317 | .175 | .054 | .298                            | .166 | .051 | .280 | .157 | .049 | .264 | .149 | .047 |   |
| 3.0         | .293                  | .156 | .047 | .284 | .152 | .046 | .267                            | .145 | .044 | .251 | .138 | .042 | .236 | .131 | .041 |   |
| 4.0         | .265                  | .138 | .041 | .257 | .135 | .040 | .242                            | .128 | .038 | .227 | .122 | .037 | .214 | .116 | .035 |   |
| 5.0         | .242                  | .123 | .036 | .235 | .120 | .035 | .221                            | .115 | .034 | .208 | .110 | .033 | .195 | .104 | .031 |   |
| 6.0         | .222                  | .111 | .032 | .216 | .109 | .031 | .203                            | .104 | .030 | .191 | .099 | .029 | .180 | .095 | .028 |   |
| 7.0         | .205                  | .102 | .029 | .199 | .099 | .028 | .188                            | .095 | .027 | .177 | .091 | .026 | .167 | .087 | .025 |   |
| 8.0         | .191                  | .093 | .026 | .185 | .091 | .026 | .174                            | .087 | .025 | .165 | .083 | .024 | .155 | .080 | .023 |   |
| 9.0         | .178                  | .086 | .024 | .173 | .084 | .024 | .163                            | .081 | .023 | .154 | .077 | .022 | .145 | .074 | .021 |   |
| 10.0        | .167                  | .080 | .022 | .162 | .078 | .022 | .153                            | .075 | .021 | .144 | .072 | .020 | .136 | .069 | .020 |   |

| $\rho_{CC}$ | 80%                   |      |      | 70%  |      |      | 50%  |      |      | 30%  |      |      | 10%  |      |      | 0 |
|-------------|-----------------------|------|------|------|------|------|--|------|------|------|------|------|------|------|------|---|
| $\rho_w$    | 50%                   | 30%  | 10%  | 50%  | 30%  | 10%  | 50%  | 30%  | 10%  | 50%  | 30%  | 10%  | 50%  | 30%  | 10%  | 0 |
| $\rho_{fc}$ | 20%                   |      |      | 20%  |      |      | 20%  |      |      | 20%  |      |      | 20%  |      |      | 0 |
| RCR         | RCR:Room Cavity Ratio |      |      |      |      |      | Ceiling Cavity Exitance Coefficients(CCEC) |      |      |      |      |      |      |      |      |   |
| 0.0         | .291                  | .291 | .291 | .249 | .249 | .249 | .170                                       | .170 | .170 | .098 | .098 | .098 | .031 | .031 | .031 |   |
| 1.0         | .286                  | .257 | .231 | .245 | .221 | .199 | .167                                       | .152 | .138 | .096 | .088 | .080 | .031 | .028 | .026 |   |
| 2.0         | .279                  | .234 | .196 | .239 | .202 | .170 | .164                                       | .139 | .118 | .095 | .081 | .069 | .030 | .026 | .023 |   |
| 3.0         | .272                  | .217 | .174 | .233 | .188 | .151 | .160                                       | .130 | .106 | .092 | .076 | .062 | .030 | .025 | .020 |   |
| 4.0         | .264                  | .205 | .159 | .227 | .177 | .138 | .156                                       | .123 | .097 | .090 | .072 | .058 | .029 | .024 | .019 |   |
| 5.0         | .257                  | .195 | .149 | .220 | .169 | .130 | .152                                       | .118 | .092 | .088 | .069 | .054 | .028 | .023 | .018 |   |
| 6.0         | .249                  | .187 | .142 | .214 | .162 | .124 | .148                                       | .113 | .087 | .086 | .067 | .052 | .028 | .022 | .017 |   |
| 7.0         | .242                  | .180 | .137 | .208 | .156 | .119 | .144                                       | .109 | .084 | .084 | .064 | .050 | .027 | .021 | .017 |   |
| 8.0         | .235                  | .174 | .133 | .203 | .151 | .116 | .140                                       | .106 | .082 | .082 | .063 | .049 | .026 | .021 | .016 |   |
| 9.0         | .229                  | .170 | .129 | .197 | .147 | .113 | .137                                       | .104 | .080 | .080 | .061 | .048 | .026 | .020 | .016 |   |
| 10.0        | .223                  | .165 | .127 | .193 | .144 | .111 | .134                                       | .101 | .079 | .078 | .060 | .047 | .025 | .020 | .016 |   |

C Range: 0 - 360DEG  
 C Interval: 90.0DEG  
 Test Speed: HIGH  
 Temperature:25.3°C  
 Operators:DAMIN  
 Test Date:08 August 2025

$\gamma$  Range: 0 - 180DEG  
 $\gamma$  Interval: 1.0DEG  
 Test System:EVERFINE GO-2000B\_V1 SYSTEM V2.00.459  
 Humidity:65.0%  
 Test Distance:7.380m [K=1.0000]  
 Remarks:

**UGR(Unified Glare Rating) Table**

|   |                  |      |      |      |       |                |      |                  |      |      |
|---|------------------|------|------|------|-------|----------------|------|------------------|------|------|
| Test:U:120.03V I:0.2429A P:27.273W PF:0.9355 Freq:59.98Hz       |                  |      |      |      |       |                |      |                  |      |      |
| Lamp Flux:2107.2x1 lm   |                  |      |      |      |       |                |      |                  |      |      |
| NAME: 62674LEDDCS   |                  |      |      |      | TYPE: |                |      | WEIGHT:          |      |      |
| SPEC.:  |                  |      |      |      | DIM.: |                |      | SERIAL No.: 1    |      |      |
| MFR.: EVERFINE  |                  |      |      |      | SUR.: |                |      | Shielding Angle: |      |      |
| ceiling/cavity  | 0.7              | 0.7  | 0.5  | 0.5  | 0.3   | 0.7            | 0.7  | 0.5              | 0.5  | 0.3  |
| walls   | 0.5              | 0.3  | 0.5  | 0.3  | 0.3   | 0.5            | 0.3  | 0.5              | 0.3  | 0.3  |
| working plane   | 0.2              | 0.2  | 0.2  | 0.2  | 0.2   | 0.2            | 0.2  | 0.2              | 0.2  | 0.2  |
| Room dimensions   | Viewed crosswise |      |      |      |       | Viewed endwise |      |                  |      |      |
| x = 2H y = 2H   | 14.5             | 15.9 | 14.9 | 16.4 | 16.8  | 16.7           | 18.2 | 17.2             | 18.6 | 19.1 |
| 3H  | 16.0             | 17.3 | 16.4 | 17.7 | 18.2  | 19.3           | 20.6 | 19.7             | 21.0 | 21.6 |
| 4H  | 16.5             | 17.7 | 17.0 | 18.2 | 18.8  | 20.6           | 21.9 | 21.1             | 22.4 | 22.9 |
| 6H  | 16.8             | 18.0 | 17.4 | 18.5 | 19.1  | 22.1           | 23.2 | 22.6             | 23.7 | 24.3 |
| 8H  | 16.9             | 18.1 | 17.4 | 18.6 | 19.1  | 22.9           | 24.0 | 23.4             | 24.5 | 25.1 |
| 12H   | 16.9             | 18.0 | 17.5 | 18.6 | 19.2  | 23.8           | 24.9 | 24.3             | 25.4 | 26.0 |
| 4H 2H   | 15.6             | 16.8 | 16.1 | 17.3 | 17.8  | 17.2           | 18.5 | 17.7             | 19.0 | 19.5 |
| 3H  | 17.3             | 18.4 | 17.8 | 18.9 | 19.5  | 19.9           | 21.0 | 20.5             | 21.6 | 22.2 |
| 4H  | 18.0             | 19.0 | 18.6 | 19.6 | 20.2  | 21.5           | 22.5 | 22.0             | 23.0 | 23.6 |
| 6H  | 18.5             | 19.4 | 19.1 | 20.0 | 20.7  | 23.1           | 24.0 | 23.7             | 24.6 | 25.2 |
| 8H  | 18.7             | 19.5 | 19.3 | 20.1 | 20.8  | 24.0           | 24.9 | 24.6             | 25.5 | 26.1 |
| 12H   | 18.8             | 19.5 | 19.4 | 20.2 | 20.8  | 25.1           | 25.9 | 25.7             | 26.5 | 27.2 |
| 8H 4H   | 18.8             | 19.7 | 19.4 | 20.3 | 20.9  | 21.7           | 22.5 | 22.3             | 23.1 | 23.8 |
| 6H  | 19.7             | 20.4 | 20.3 | 21.0 | 21.7  | 23.6           | 24.3 | 24.2             | 24.9 | 25.6 |
| 8H  | 20.0             | 20.7 | 20.7 | 21.3 | 22.0  | 24.7           | 25.3 | 25.3             | 26.0 | 26.7 |
| 12H   | 20.3             | 20.8 | 20.9 | 21.5 | 22.2  | 26.0           | 26.5 | 26.7             | 27.2 | 28.0 |
| 12H 4H  | 19.1             | 19.9 | 19.7 | 20.5 | 21.2  | 21.7           | 22.5 | 22.3             | 23.1 | 23.8 |
| 6H  | 20.1             | 20.7 | 20.7 | 21.4 | 22.1  | 23.6           | 24.3 | 24.3             | 24.9 | 25.6 |
| 8H  | 20.6             | 21.1 | 21.2 | 21.8 | 22.5  | 24.8           | 25.4 | 25.5             | 26.0 | 26.8 |
| Variations with the observer position at spacings(CIE Pub.117): |                  |      |      |      |       |                |      |                  |      |      |
| S = 1.0H  | + 0.1 / - 0.2    |      |      |      |       | + 0.1 / - 0.1  |      |                  |      |      |
| 1.5H  | + 0.2 / - 0.3    |      |      |      |       | + 0.2 / - 0.2  |      |                  |      |      |
| 2.0H  | + 0.2 / - 0.5    |      |      |      |       | + 0.2 / - 0.3  |      |                  |      |      |

CIE Pub.117, 2107 lm Total Lamp Luminous Flux Correct (8log(F/F0) = 2.6)  
 Area: 0.1 m2

|                          |   |
|--------------------------|---|
| C Range: 0 - 360DEG      | γ Range: 0 - 180DEG                               |
| C Interval: 90.0DEG      | γ Interval: 1.0DEG                                |
| Test Speed: HIGH         | Test System:EVERFINE GO-2000B_V1 SYSTEM V2.00.459 |
| Temperature:25.3℃        | Humidity:65.0%                                    |
| Operators:DAMIN          | Test Distance:7.380m [K=1.0000]                   |
| Test Date:08 August 2025 | Remarks:  |

**UTILIZATION FACTORS TABLE**

|  |       |                  |
|--|-------|------------------|
| Test:U:120.03V I:0.2429A P:27.273W PF:0.9355 Freq:59.98Hz<br>Lamp Flux:2107.2x1 lm |       |                  |
| NAME: 62674LEDDCS  | TYPE: | WEIGHT:          |
| SPEC.:   | DIM.: | SERIAL No.: 1    |
| MFR.: EVERFINE   | SUR.: | Shielding Angle: |

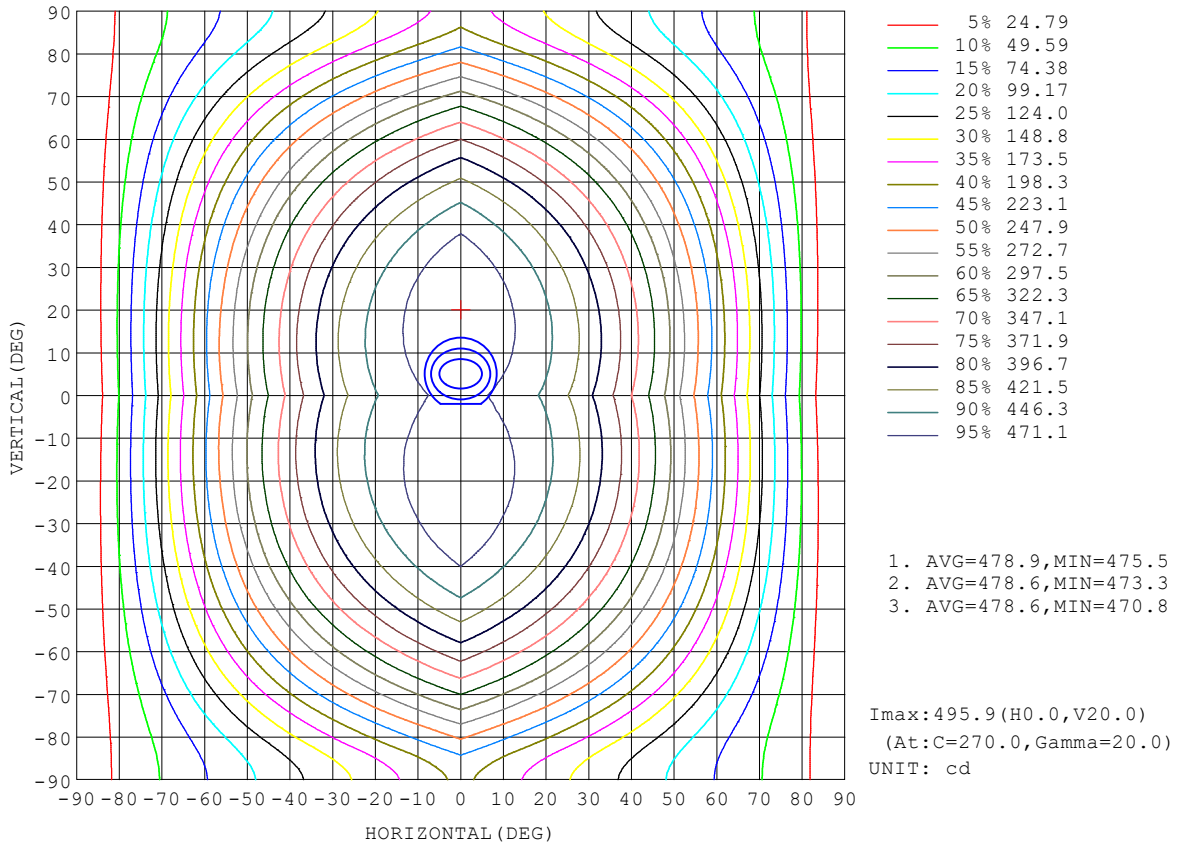
| REFLECTANCE                      |  |     |           |     |     |     |               |     |     |        |
|----------------------------------|--|-----|-----------|-----|-----|-----|---------------|-----|-----|--------|
| Ceiling                          | 0.8  | 0.8 | 0.8       | 0.7 | 0.7 | 0.7 | 0.5           | 0.5 | 0.5 | 0      |
| Walls                            | 0.7  | 0.5 | 0.3       | 0.7 | 0.5 | 0.3 | 0.7           | 0.5 | 0.3 | 0      |
| Working plane                    | 0.2  | 0.2 | 0.2       | 0.2 | 0.2 | 0.2 | 0.2           | 0.2 | 0.2 | 0      |
| ROOM INDEX                       | UTILIZATION FACTORS (PERCENT) $k(RI) \times RCR = 5$ |     |           |     |     |     |               |     |     |        |
| k = 0.60                         | 49   | 37  | 30        | 48  | 37  | 30  | 47            | 36  | 29  | 22     |
| 0.80                             | 59   | 46  | 38        | 57  | 45  | 38  | 55            | 44  | 37  | 29     |
| 1.00                             | 67   | 54  | 46        | 65  | 53  | 46  | 62            | 54  | 45  | 36     |
| 1.25                             | 74   | 62  | 53        | 72  | 61  | 53  | 68            | 58  | 51  | 42     |
| 1.50                             | 79   | 67  | 59        | 77  | 66  | 58  | 72            | 63  | 56  | 46     |
| 2.00                             | 86   | 76  | 68        | 84  | 74  | 67  | 78            | 70  | 64  | 53     |
| 2.50                             | 91   | 81  | 74        | 88  | 79  | 72  | 82            | 75  | 69  | 57     |
| 3.00                             | 95   | 86  | 79        | 91  | 83  | 77  | 85            | 79  | 73  | 61     |
| 4.00                             | 99   | 92  | 86        | 96  | 89  | 83  | 89            | 84  | 79  | 66     |
| 5.00                             | 102  | 96  | 90        | 98  | 93  | 88  | 92            | 87  | 83  | 69     |
| ROOM INDEX                       | UF(total)  |     |           |     |     |     |               |     |     | Direct |
| According to DIN EN 13032-2 2004 |  |     | Suspended |     |     |     | SHRNOM = 1.25 |     |     |        |

C Range: 0 - 360DEG  
 C Interval: 90.0DEG  
 Test Speed: HIGH  
 Temperature:25.3°C  
 Operators:DAMIN  
 Test Date:08 August 2025

$\gamma$  Range: 0 - 180DEG  
 $\gamma$  Interval: 1.0DEG  
 Test System:EVERFINE GO-2000B\_V1 SYSTEM V2.00.459  
 Humidity:65.0%  
 Test Distance:7.380m [K=1.0000]  
 Remarks:

ISOCANDELA DIAGRAM

|  |       |                  |
|--|-------|------------------|
| Test:U:120.03V I:0.2429A P:27.273W PF:0.9355 Freq:59.98Hz<br>Lamp Flux:2107.2x1 lm |       |                  |
| NAME: 62674LEDDCS  | TYPE: | WEIGHT:          |
| SPEC.:   | DIM.: | SERIAL No.: 1    |
| MFR.: EVERFINE   | SUR.: | Shielding Angle: |

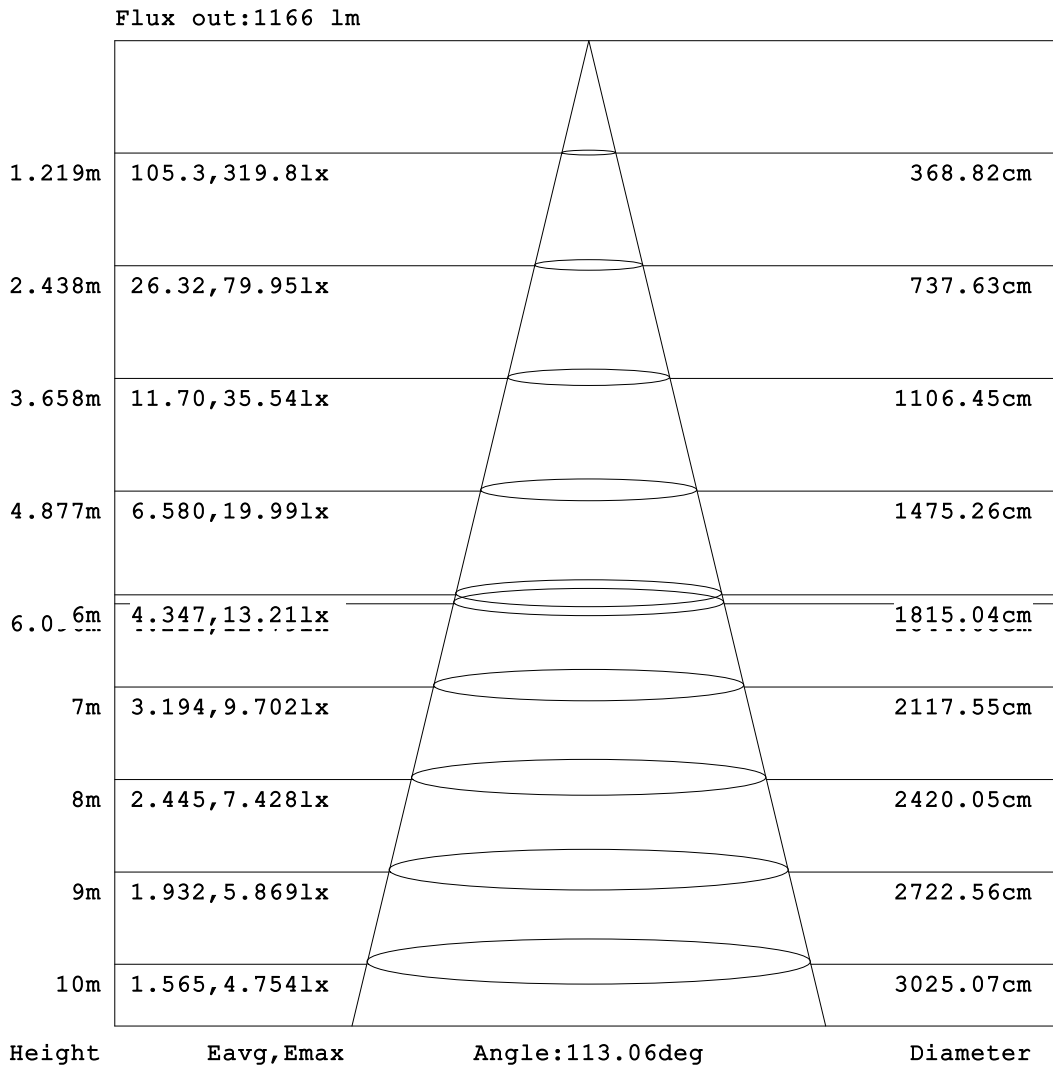


C Range: 0 - 360DEG  
C Interval: 90.0DEG  
Test Speed: HIGH  
Temperature: 25.3 °C  
Operators: DAMIN  
Test Date: 08 August 2025

γ Range: 0 - 180DEG  
γ Interval: 1.0DEG  
Test System: EVERFINE GO-2000B\_V1 SYSTEM V2.00.459  
Humidity: 65.0%  
Test Distance: 7.380m [K=1.0000]  
Remarks:

**AAI Figure**

|  |       |                  |
|--|-------|------------------|
| Test:U:120.03V I:0.2429A P:27.273W PF:0.9355 Freq:59.98Hz<br>Lamp Flux:2107.2x1 lm |       |                  |
| NAME: 62674LEDDCS  | TYPE: | WEIGHT:          |
| SPEC.:   | DIM.: | SERIAL No.: 1    |
| MFR.: EVERFINE   | SUR.: | Shielding Angle: |



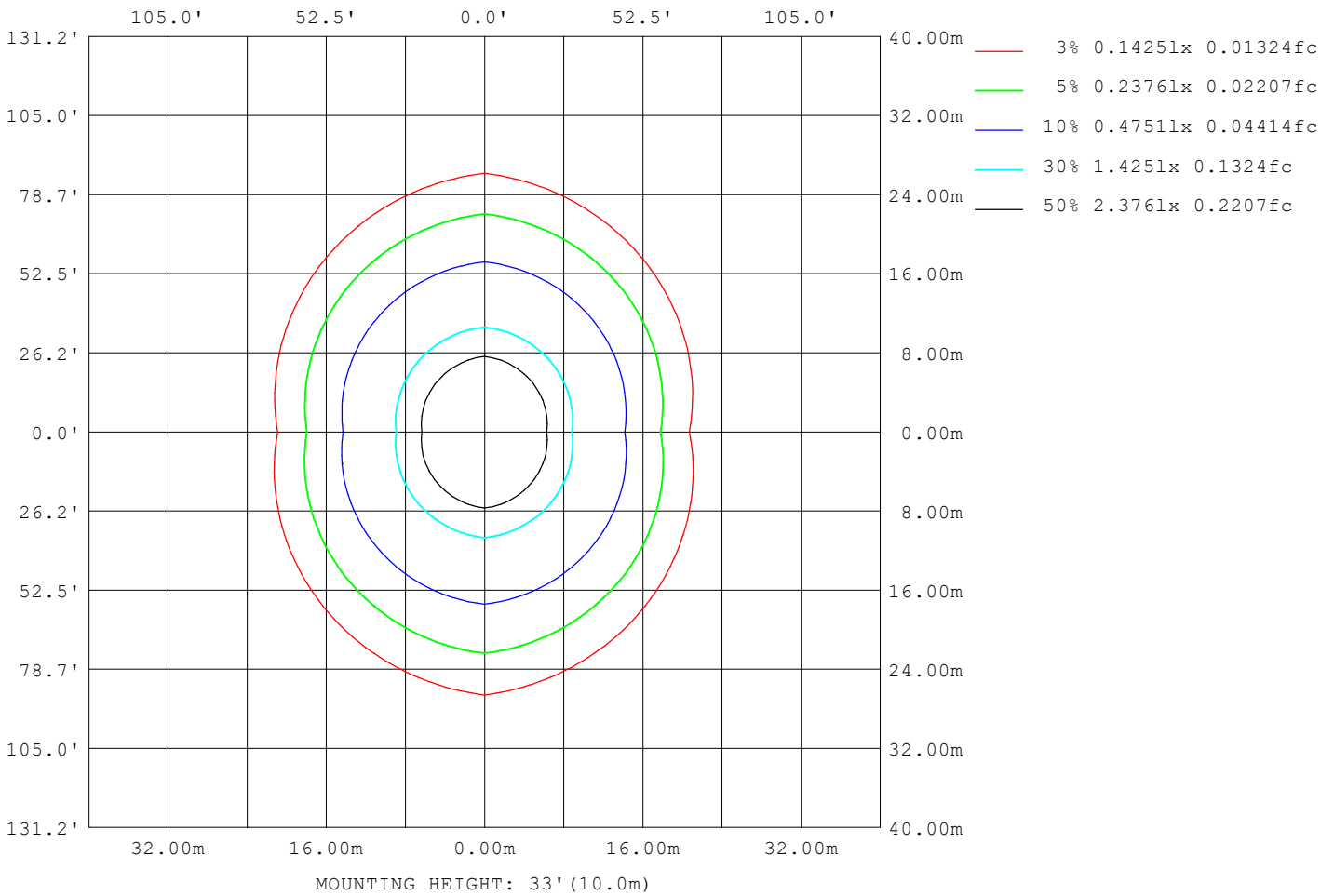
Note:The Curves indicate the illuminated area and the average illumination when the luminaire is at different distance.

C Range: 0 - 360DEG  
 C Interval: 90.0DEG  
 Test Speed: HIGH  
 Temperature:25.3 °C  
 Operators:DAMIN  
 Test Date:08 August 2025

γ Range: 0 - 180DEG  
 γ Interval: 1.0DEG  
 Test System:EVERFINE GO-2000B\_V1 SYSTEM V2.00.459  
 Humidity:65.0%  
 Test Distance:7.380m [K=1.0000]  
 Remarks:

**ISOLUX DIAGRAM**

|  |       |                  |
|--|-------|------------------|
| Test:U:120.03V I:0.2429A P:27.273W PF:0.9355 Freq:59.98Hz<br>Lamp Flux:2107.2x1 lm |       |                  |
| NAME: 62674LEDDCS  | TYPE: | WEIGHT:          |
| SPEC.:   | DIM.: | SERIAL No.: 1    |
| MFR.: EVERFINE   | SUR.: | Shielding Angle: |



C Range: 0 - 360DEG  
 C Interval: 90.0DEG  
 Test Speed: HIGH  
 Temperature:25.3 °C  
 Operators:DAMIN  
 Test Date:08 August 2025

γ Range: 0 - 180DEG  
 γ Interval: 1.0DEG  
 Test System:EVERFINE GO-2000B\_V1 SYSTEM V2.00.459  
 Humidity:65.0%  
 Test Distance:7.380m [K=1.0000]  
 Remarks:

**LED Avg.L Report**

|  |       |                  |
|--|-------|------------------|
| Test:U:120.03V I:0.2429A P:27.273W PF:0.9355 Freq:59.98Hz<br>Lamp Flux:2107.2x1 lm |       |                  |
| NAME: 62674LEDDCS  | TYPE: | WEIGHT:          |
| SPEC.:   | DIM.: | SERIAL No.: 1    |
| MFR.: EVERFINE   | SUR.: | Shielding Angle: |

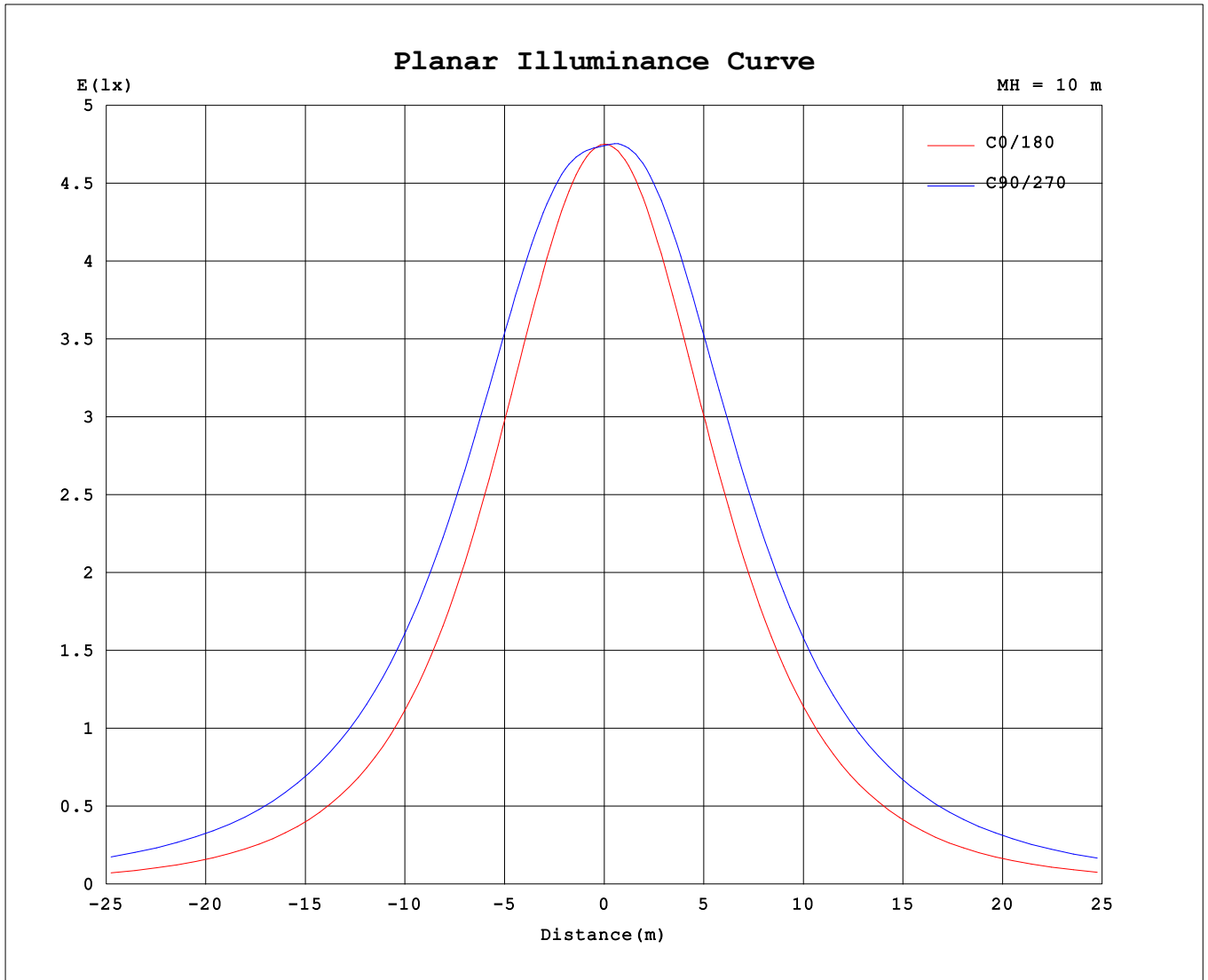
| AvgL             | cd/m2 |
|------------------|-------|
| L_0~180 (65) av  | 4010  |
| L_0~180 (75) av  | 3324  |
| L_0~180 (85) av  | 2002  |
| L_90~270 (65) av | 8234  |
| L_90~270 (75) av | 10770 |
| L_90~270 (85) av | 24280 |
| L_45 (65) av     | 6654  |
| L_45 (75) av     | 7986  |
| L_45 (85) av     | 15937 |

Standard: GB/T 29293-2012

C Range: 0 - 360DEG  
 C Interval: 90.0DEG  
 Test Speed: HIGH  
 Temperature:25.3℃  
 Operators:DAMIN  
 Test Date:08 August 2025

γ Range: 0 - 180DEG  
 γ Interval: 1.0DEG  
 Test System:EVERFINE GO-2000B\_V1 SYSTEM V2.00.459  
 Humidity:65.0%  
 Test Distance:7.380m [K=1.0000]  
 Remarks:

Planar Illuminance Curve



C Range: 0 - 360DEG  
 C Interval: 90.0DEG  
 Test Speed: HIGH  
 Temperature: 25.3 °C  
 Operators: DAMIN  
 Test Date: 08 August 2025

γ Range: 0 - 180DEG  
 γ Interval: 1.0DEG  
 Test System: EVERFINE GO-2000B\_V1 SYSTEM V2.00.459  
 Humidity: 65.0%  
 Test Distance: 7.380m [K=1.0000]  
 Remarks:

LUMINOUS DISTRIBUTION INTENSITY DATA

|  |       |                  |
|--|-------|------------------|
| Test:U:120.03V I:0.2429A P:27.273W PF:0.9355 Freq:59.98Hz<br>Lamp Flux:2107.2x1 lm |       |                  |
| NAME: 62674LEDDCS  | TYPE: | WEIGHT:          |
| SPEC.:   | DIM.: | SERIAL No.: 1    |
| MFR.: EVERFINE   | SUR.: | Shielding Angle: |

Table--1

UNIT: cd

| C (DEG) \ γ (DEG) | 0    | 90   | 180  | 270  |  |  |  |  |  |  |  |  |  |  |  |  |  |  |  |
|-------------------|------|------|------|------|--|--|--|--|--|--|--|--|--|--|--|--|--|--|--|
| 0                 | 475  | 474  | 475  | 474  |  |  |  |  |  |  |  |  |  |  |  |  |  |  |  |
| 5                 | 472  | 476  | 473  | 480  |  |  |  |  |  |  |  |  |  |  |  |  |  |  |  |
| 10                | 466  | 484  | 468  | 488  |  |  |  |  |  |  |  |  |  |  |  |  |  |  |  |
| 15                | 455  | 491  | 458  | 493  |  |  |  |  |  |  |  |  |  |  |  |  |  |  |  |
| 20                | 441  | 495  | 444  | 496  |  |  |  |  |  |  |  |  |  |  |  |  |  |  |  |
| 25                | 422  | 495  | 427  | 494  |  |  |  |  |  |  |  |  |  |  |  |  |  |  |  |
| 30                | 401  | 491  | 406  | 489  |  |  |  |  |  |  |  |  |  |  |  |  |  |  |  |
| 35                | 376  | 483  | 381  | 479  |  |  |  |  |  |  |  |  |  |  |  |  |  |  |  |
| 40                | 347  | 471  | 354  | 465  |  |  |  |  |  |  |  |  |  |  |  |  |  |  |  |
| 45                | 316  | 456  | 323  | 447  |  |  |  |  |  |  |  |  |  |  |  |  |  |  |  |
| 50                | 282  | 436  | 289  | 425  |  |  |  |  |  |  |  |  |  |  |  |  |  |  |  |
| 55                | 245  | 412  | 253  | 400  |  |  |  |  |  |  |  |  |  |  |  |  |  |  |  |
| 60                | 207  | 385  | 213  | 372  |  |  |  |  |  |  |  |  |  |  |  |  |  |  |  |
| 65                | 166  | 356  | 173  | 340  |  |  |  |  |  |  |  |  |  |  |  |  |  |  |  |
| 70                | 124  | 323  | 131  | 306  |  |  |  |  |  |  |  |  |  |  |  |  |  |  |  |
| 75                | 82.7 | 288  | 89.3 | 270  |  |  |  |  |  |  |  |  |  |  |  |  |  |  |  |
| 80                | 44.9 | 252  | 50.2 | 234  |  |  |  |  |  |  |  |  |  |  |  |  |  |  |  |
| 85                | 15.9 | 220  | 19.0 | 204  |  |  |  |  |  |  |  |  |  |  |  |  |  |  |  |
| 90                | 6.90 | 205  | 6.60 | 188  |  |  |  |  |  |  |  |  |  |  |  |  |  |  |  |
| 95                | 6.77 | 152  | 6.46 | 145  |  |  |  |  |  |  |  |  |  |  |  |  |  |  |  |
| 100               | 7.13 | 113  | 6.81 | 99.4 |  |  |  |  |  |  |  |  |  |  |  |  |  |  |  |
| 105               | 7.65 | 95.8 | 7.32 | 90.8 |  |  |  |  |  |  |  |  |  |  |  |  |  |  |  |
| 110               | 8.15 | 97.8 | 7.74 | 84.7 |  |  |  |  |  |  |  |  |  |  |  |  |  |  |  |
| 115               | 8.49 | 80.1 | 7.85 | 73.3 |  |  |  |  |  |  |  |  |  |  |  |  |  |  |  |
| 120               | 8.64 | 73.7 | 7.93 | 67.2 |  |  |  |  |  |  |  |  |  |  |  |  |  |  |  |
| 125               | 8.82 | 68.9 | 8.09 | 62.5 |  |  |  |  |  |  |  |  |  |  |  |  |  |  |  |
| 130               | 8.82 | 65.4 | 8.20 | 57.0 |  |  |  |  |  |  |  |  |  |  |  |  |  |  |  |
| 135               | 8.90 | 64.7 | 8.32 | 53.0 |  |  |  |  |  |  |  |  |  |  |  |  |  |  |  |
| 140               | 8.98 | 66.4 | 8.40 | 46.5 |  |  |  |  |  |  |  |  |  |  |  |  |  |  |  |
| 145               | 8.97 | 66.7 | 8.48 | 49.3 |  |  |  |  |  |  |  |  |  |  |  |  |  |  |  |
| 150               | 9.02 | 52.8 | 8.58 | 42.4 |  |  |  |  |  |  |  |  |  |  |  |  |  |  |  |
| 155               | 9.14 | 36.3 | 8.74 | 29.8 |  |  |  |  |  |  |  |  |  |  |  |  |  |  |  |
| 160               | 9.29 | 30.3 | 8.96 | 24.7 |  |  |  |  |  |  |  |  |  |  |  |  |  |  |  |
| 165               | 9.53 | 28.6 | 9.27 | 21.8 |  |  |  |  |  |  |  |  |  |  |  |  |  |  |  |
| 170               | 9.70 | 21.1 | 9.48 | 16.1 |  |  |  |  |  |  |  |  |  |  |  |  |  |  |  |
| 175               | 9.77 | 11.2 | 9.68 | 10.6 |  |  |  |  |  |  |  |  |  |  |  |  |  |  |  |
| 180               | 9.82 | 9.69 | 9.82 | 9.68 |  |  |  |  |  |  |  |  |  |  |  |  |  |  |  |

C Range: 0 - 360DEG  
 C Interval: 90.0DEG  
 Test Speed: HIGH  
 Temperature:25.3℃  
 Operators:DAMIN  
 Test Date:08 August 2025

γ Range: 0 - 180DEG  
 γ Interval: 1.0DEG  
 Test System:EVERFINE GO-2000B\_V1 SYSTEM V2.00.459  
 Humidity:65.0%  
 Test Distance:7.380m [K=1.0000]  
 Remarks: