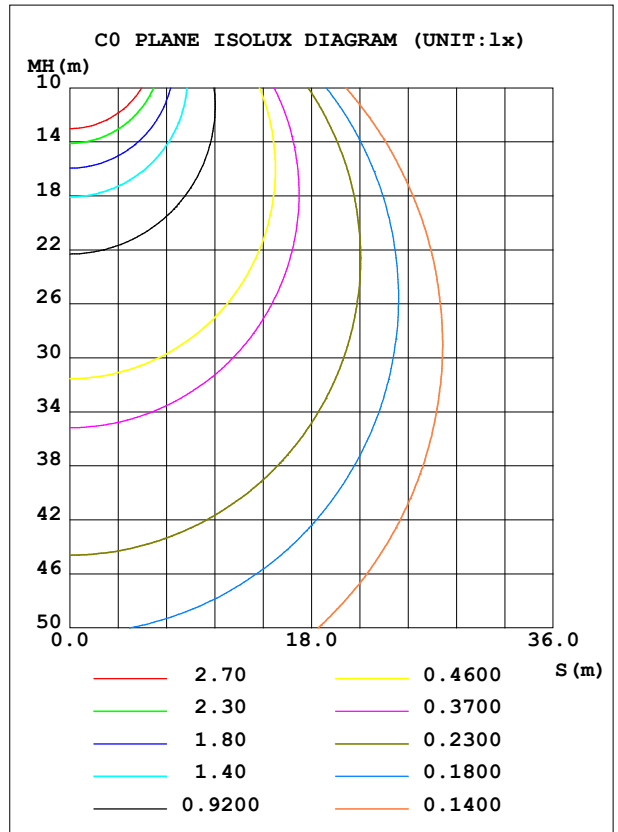
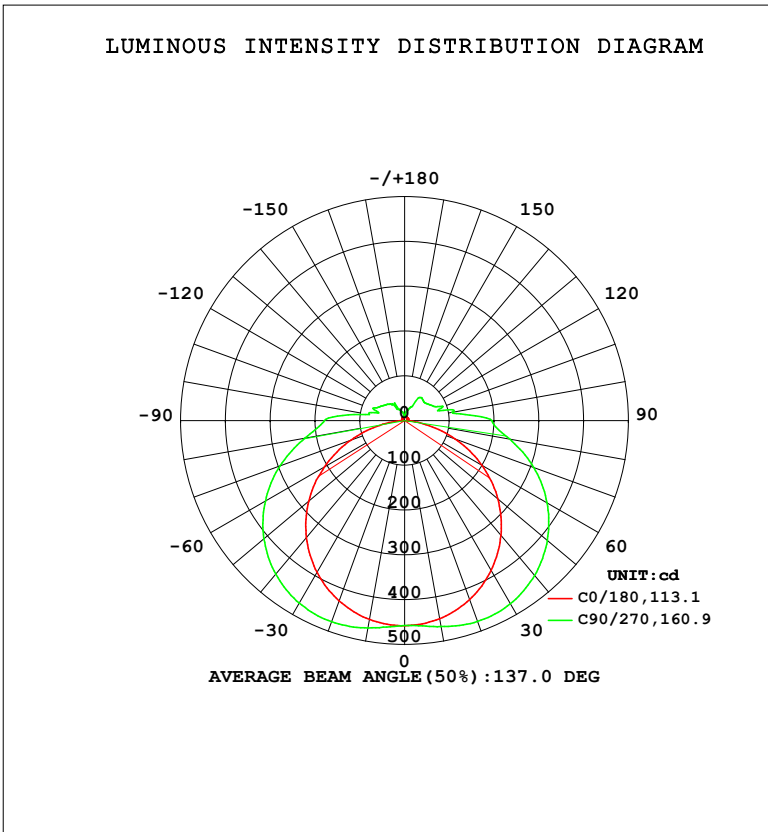


LUMINAIRE PHOTOMETRIC TEST REPORT

Test:U:120.06V I:0.2453A P:27.538W PF:0.9350 Freq:59.98Hz Lamp Flux:2018.42x1 lm		
NAME: 62674LEDDCS	TYPE:	WEIGHT:
SPEC.:	DIM.:	SERIAL No.: 1
MFR.: EVERFINE	SUR.:	Shielding Angle:

DATA OF LAMP		PHOTOMETRIC DATA				Eff: 73.29 lm/W
MODEL	3000K	I _{max} (cd)	478.1	S/MH (C0/180)	1.27	
NOMINAL POWER (W)	27	LOR (%)	100.0	S/MH (C90/270)	1.53	
RATED VOLTAGE (V)	120	TOTAL FLUX (lm)	2018.4	η UP, DN (C0-180)	6.9, 43.6	
NOMINAL FLUX (lm)	2018.42	CIE CLASS	SEMI-D.	η UP, DN (C180-360)	6.0, 43.5	
LAMPS INSIDE	1	η up (%)	12.9	CIBSE SHR NOM	1.50	
TEST VOLTAGE (V)	120	η down (%)	87.1	CIBSE SHR MAX	1.55	



C Range: 0 - 360DEG
 C Interval: 90.0DEG
 Test Speed: HIGH
 Temperature: 25.3 °C
 Operators: DAMIN
 Test Date: 07 August 2025

γ Range: 0 - 180DEG
 γ Interval: 1.0DEG
 Test System: EVERFINE GO-2000B_V1 SYSTEM V2.00.459
 Humidity: 65.0%
 Test Distance: 7.380m [K=1.0000]
 Remarks:

ZONAL FLUX DIAGRAM

ZONAL FLUX DIAGRAM:

γ	C0	C90	C180	C270				γ	Φ zone	Φ total	%lum,lamp
10	449.1	466.8	451.1	470.2				0- 10	43.81	43.81	2.17,2.17
20	425.3	476.9	428.5	477.5				10- 20	129.4	173.2	8.58,8.58
30	386.3	472.5	391.2	470.7				20- 30	204.4	377.6	18.7,18.7
40	334.6	451.6	341.4	447.7				30- 40	259.1	636.7	31.5,31.5
50	271.9	416.0	279.7	410.6				40- 50	286.1	922.8	45.7,45.7
60	199.3	367.5	206.2	358.4				50- 60	281.8	1205	59.7,59.7
70	119.6	306.9	127.4	296.1				60- 70	246.1	1451	71.9,71.9
80	42.47	238.2	49.33	226.0				70- 80	185.1	1636	81,81
90	6.478	195.5	6.315	179.5				80- 90	122.5	1758	87.1,87.1
100	6.600	107.9	6.610	80.41				90-100	81.32	1840	91.1,91.1
110	7.405	91.92	7.511	72.34				100-110	48.02	1888	93.5,93.5
120	7.974	69.20	7.812	63.48				110-120	40.44	1928	95.5,95.5
130	8.156	61.33	8.056	55.31				120-130	31.43	1959	97.1,97.1
140	8.303	62.70	8.218	49.11				130-140	25.12	1985	98.3,98.3
150	8.395	49.59	8.268	45.41				140-150	19.05	2004	99.3,99.3
160	8.701	28.20	8.590	23.37				150-160	9.302	2013	99.7,99.7
170	9.026	19.26	8.926	15.43				160-170	4.426	2017	99.9,99.9
180	9.154	9.231	9.154	9.231				170-180	1.049	2018	100,100
DEG	LUMINOUS INTENSITY:cd								UNIT:lm		

Conical surface Flux(90deg): 778.3 lm

%lum = 38.6%

%lamp = 38.6%

Conical surface Flux(120deg): 1204.5 lm

%lum = 59.7%

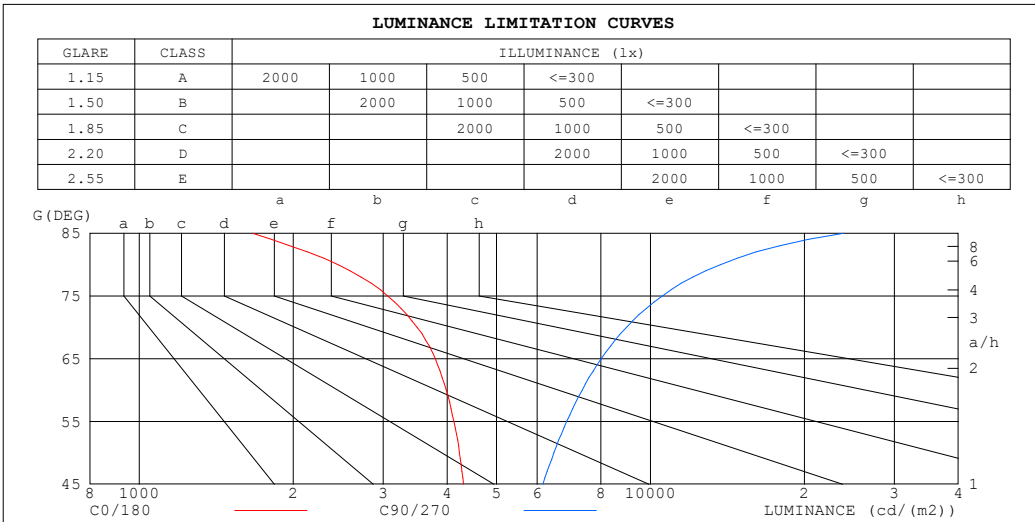
%lamp = 59.7%

C Range: 0 - 360DEG
 C Interval: 90.0DEG
 Test Speed: HIGH
 Temperature:25.3°C
 Operators:DAMIN
 Test Date:07 August 2025

γ Range: 0 - 180DEG
 γ Interval: 1.0DEG
 Test System:EVERFINE GO-2000B_V1 SYSTEM V2.00.459
 Humidity:65.0%
 Test Distance:7.380m [K=1.0000]
 Remarks:

LUMINANCE LIMITATION CURVES

Test:U:120.06V I:0.2453A P:27.538W PF:0.9350 Freq:59.98Hz Lamp Flux:2018.42x1 lm		
NAME: 62674LEDDCS	TYPE:	WEIGHT:
SPEC.:	DIM.:	SERIAL No.: 1
MFR.: EVERFINE	SUR.:	Shielding Angle:



LUMINANCE cd/(m2)		
G (DEG)	C0/180	C90/270
85	1667	23858
80	2446	13718
75	3062	10545
70	3496	8973
65	3794	8013
60	3987	7350
55	4123	6855
50	4230	6472
45	4308	6161

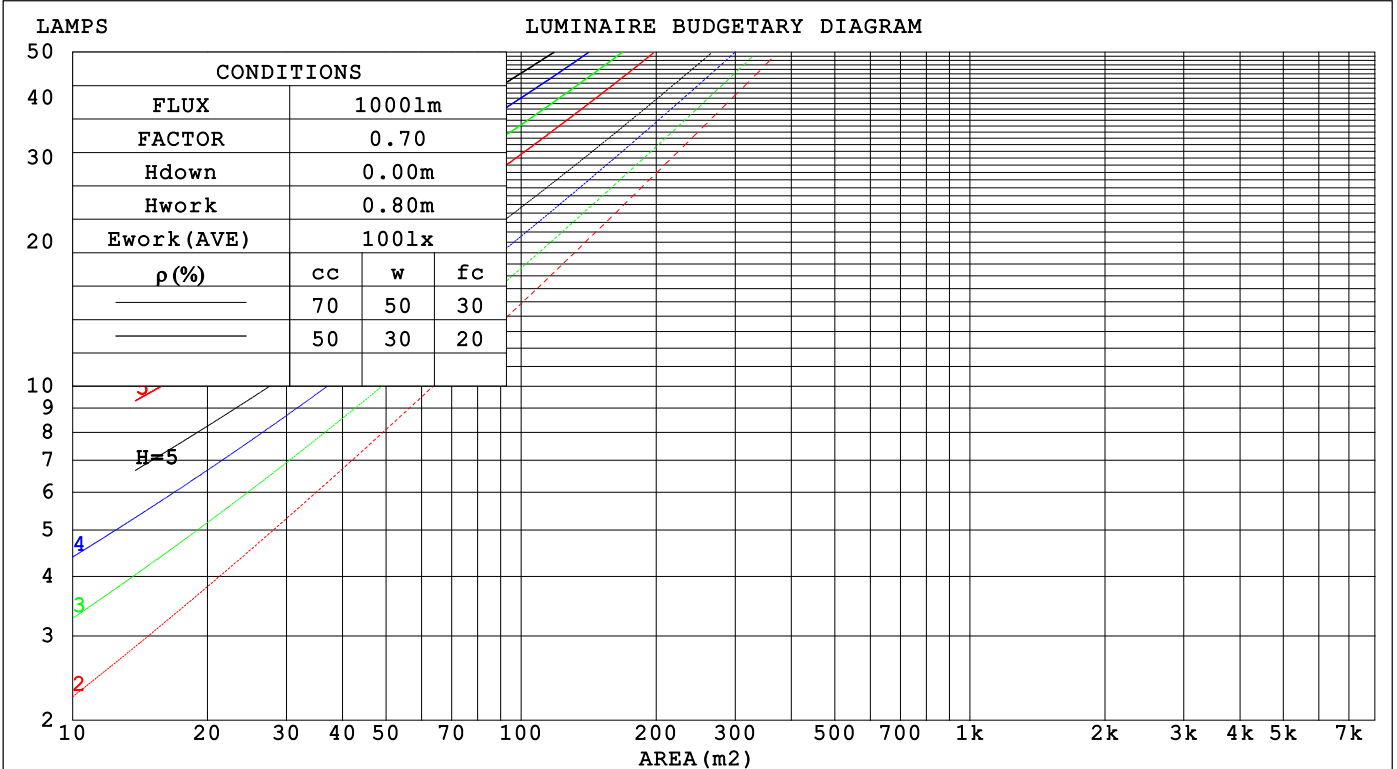
C Range: 0 - 360DEG
 C Interval: 90.0DEG
 Test Speed: HIGH
 Temperature:25.3 °C
 Operators:DAMIN
 Test Date:07 August 2025

γ Range: 0 - 180DEG
 γ Interval: 1.0DEG
 Test System:EVERFINE GO-2000B_V1 SYSTEM V2.00.459
 Humidity:65.0%
 Test Distance:7.380m [K=1.0000]
 Remarks:

CU AND LUMINAIRE BUDGETARY ESTIMATE DIAGRAM

Test:U:120.06V I:0.2453A P:27.538W PF:0.9350 Freq:59.98Hz Lamp Flux:2018.42x1 lm		
NAME: 62674LEDDCS	TYPE:	WEIGHT:
SPEC.:	DIM.:	SERIAL No.: 1
MFR.: EVERFINE	SUR.:	Shielding Angle:

pcc	80%			70%			50%			30%			10%			0
pw	50%	30%	10%	50%	30%	10%	50%	30%	10%	50%	30%	10%	50%	30%	10%	0
pfc	20%			20%			20%			20%			20%			0
RCR	RCR:Room Cavity Ratio Coefficients of Utilization(CU)															
0.0	1.16	1.16	1.16	1.12	1.12	1.12	1.04	1.04	1.04	.97	.97	.97	.90	.90	.90	.87
1.0	.98	.92	.88	.94	.89	.85	.87	.84	.80	.81	.78	.75	.76	.73	.71	.68
2.0	.84	.76	.69	.81	.74	.68	.75	.69	.64	.70	.65	.61	.65	.61	.57	.54
3.0	.73	.64	.57	.70	.62	.55	.65	.58	.53	.61	.55	.50	.56	.52	.48	.45
4.0	.64	.54	.47	.62	.53	.46	.57	.50	.44	.53	.47	.42	.50	.44	.40	.37
5.0	.57	.47	.40	.55	.46	.39	.51	.43	.38	.48	.41	.36	.44	.39	.34	.32
6.0	.51	.41	.35	.49	.40	.34	.46	.38	.33	.43	.36	.31	.40	.34	.30	.28
7.0	.46	.37	.30	.44	.36	.30	.41	.34	.28	.39	.32	.27	.36	.31	.26	.24
8.0	.41	.33	.27	.40	.32	.26	.38	.30	.25	.36	.29	.24	.33	.28	.23	.21
9.0	.38	.29	.24	.37	.29	.23	.35	.28	.23	.33	.26	.22	.31	.25	.21	.19
10.0	.35	.27	.21	.34	.26	.21	.32	.25	.20	.30	.24	.20	.28	.23	.19	.17



C Range: 0 - 360DEG
 C Interval: 90.0DEG
 Test Speed: HIGH
 Temperature:25.3 °C
 Operators:DAMIN
 Test Date:07 August 2025

γ Range: 0 - 180DEG
 γ Interval: 1.0DEG
 Test System:EVERFINE GO-2000B_V1 SYSTEM V2.00.459
 Humidity:65.0%
 Test Distance:7.380m [K=1.0000]
 Remarks:

WEC AND CCEC

Test:U:120.06V I:0.2453A P:27.538W PF:0.9350 Freq:59.98Hz Lamp Flux:2018.42x1 lm		
NAME: 62674LEDDCS	TYPE:	WEIGHT:
SPEC.:	DIM.:	SERIAL No.: 1
MFR.: EVERFINE	SUR.:	Shielding Angle:

ρ_{CC}	80%			70%			50%			30%			10%			0
ρ_w	50%	30%	10%	50%	30%	10%	50%	30%	10%	50%	30%	10%	50%	30%	10%	0
ρ_{fc}	20%			20%			20%			20%			20%			0
RCR	RCR:Room Cavity Ratio						Wall Exitance Coefficients(WEC)									
0.0																
1.0	.370	.211	.067	.359	.205	.065	.338	.194	.062	.319	.184	.059	.301	.175	.056	
2.0	.327	.179	.055	.317	.175	.054	.298	.166	.051	.281	.158	.049	.265	.150	.047	
3.0	.293	.156	.047	.284	.152	.046	.267	.145	.044	.252	.138	.042	.237	.131	.041	
4.0	.265	.138	.041	.257	.135	.040	.242	.128	.038	.228	.122	.037	.215	.117	.036	
5.0	.242	.123	.036	.235	.121	.035	.221	.115	.034	.208	.110	.033	.196	.105	.031	
6.0	.222	.111	.032	.216	.109	.031	.203	.104	.030	.191	.099	.029	.180	.095	.028	
7.0	.205	.102	.029	.199	.099	.028	.188	.095	.027	.177	.091	.026	.167	.087	.026	
8.0	.191	.093	.026	.185	.091	.026	.175	.087	.025	.165	.084	.024	.156	.080	.023	
9.0	.178	.086	.024	.173	.084	.024	.163	.081	.023	.154	.077	.022	.146	.074	.021	
10.0	.167	.080	.022	.162	.078	.022	.153	.075	.021	.145	.072	.020	.137	.069	.020	

ρ_{CC}	80%			70%			50%			30%			10%			0
ρ_w	50%	30%	10%	50%	30%	10%	50%	30%	10%	50%	30%	10%	50%	30%	10%	0
ρ_{fc}	20%			20%			20%			20%			20%			0
RCR	RCR:Room Cavity Ratio						Ceiling Cavity Exitance Coefficients(CCEC)									
0.0																
1.0	.289	.289	.289	.247	.247	.247	.168	.168	.168	.097	.097	.097	.031	.031	.031	
2.0	.277	.231	.193	.237	.199	.167	.162	.138	.117	.094	.080	.068	.030	.026	.022	
3.0	.269	.215	.171	.231	.185	.148	.158	.129	.104	.092	.075	.061	.029	.024	.020	
4.0	.262	.202	.157	.224	.175	.136	.154	.122	.096	.089	.071	.057	.029	.023	.019	
5.0	.254	.192	.146	.218	.166	.127	.150	.116	.090	.087	.068	.053	.028	.022	.018	
6.0	.247	.184	.139	.212	.159	.121	.146	.112	.086	.085	.066	.051	.027	.021	.017	
7.0	.239	.177	.134	.206	.154	.117	.142	.108	.083	.083	.064	.049	.027	.021	.016	
8.0	.233	.172	.130	.200	.149	.113	.139	.105	.080	.081	.062	.048	.026	.020	.016	
9.0	.227	.167	.127	.195	.145	.111	.135	.102	.078	.079	.060	.047	.026	.020	.016	
10.0	.221	.163	.124	.190	.141	.108	.132	.099	.077	.077	.059	.046	.025	.019	.015	

C Range: 0 - 360DEG
 C Interval: 90.0DEG
 Test Speed: HIGH
 Temperature:25.3℃
 Operators:DAMIN
 Test Date:07 August 2025

γ Range: 0 - 180DEG
 γ Interval: 1.0DEG
 Test System:EVERFINE GO-2000B_V1 SYSTEM V2.00.459
 Humidity:65.0%
 Test Distance:7.380m [K=1.0000]
 Remarks:

UGR(Unified Glare Rating) Table

Test:U:120.06V I:0.2453A P:27.538W PF:0.9350 Freq:59.98Hz										
Lamp Flux:2018.42x1 lm										
NAME: 62674LEDDCS					TYPE:			WEIGHT:		
SPEC.:					DIM.:			SERIAL No.: 1		
MFR.: EVERFINE					SUR.:			Shielding Angle:		
ceiling/cavity	0.7	0.7	0.5	0.5	0.3	0.7	0.7	0.5	0.5	0.3
walls	0.5	0.3	0.5	0.3	0.3	0.5	0.3	0.5	0.3	0.3
working plane	0.2	0.2	0.2	0.2	0.2	0.2	0.2	0.2	0.2	0.2
Room dimensions	Viewed crosswise					Viewed endwise				
x = 2H y = 2H	14.5	16.0	15.0	16.4	16.8	16.7	18.2	17.2	18.6	19.0
3H	16.0	17.3	16.5	17.8	18.3	19.2	20.6	19.7	21.0	21.5
4H	16.5	17.8	17.0	18.3	18.8	20.6	21.8	21.1	22.3	22.8
6H	16.8	18.0	17.4	18.5	19.1	22.0	23.2	22.5	23.7	24.2
8H	16.9	18.1	17.4	18.6	19.1	22.8	23.9	23.3	24.4	25.0
12H	16.9	18.0	17.5	18.6	19.1	23.7	24.8	24.2	25.3	25.9
4H 2H	15.6	16.9	16.1	17.3	17.9	17.2	18.5	17.7	18.9	19.5
3H	17.3	18.4	17.8	18.9	19.5	19.9	21.0	20.5	21.5	22.1
4H	18.0	19.0	18.6	19.6	20.2	21.4	22.4	22.0	23.0	23.6
6H	18.5	19.4	19.1	20.0	20.6	23.0	24.0	23.6	24.5	25.2
8H	18.7	19.5	19.3	20.1	20.8	24.0	24.8	24.6	25.4	26.0
12H	18.8	19.5	19.4	20.1	20.8	25.0	25.8	25.6	26.4	27.1
8H 4H	18.8	19.7	19.4	20.3	20.9	21.7	22.5	22.3	23.1	23.7
6H	19.7	20.4	20.3	21.0	21.7	23.5	24.2	24.2	24.9	25.6
8H	20.0	20.6	20.6	21.3	22.0	24.6	25.2	25.3	25.9	26.6
12H	20.2	20.8	20.9	21.4	22.2	25.9	26.5	26.6	27.1	27.9
12H 4H	19.1	19.9	19.7	20.5	21.1	21.7	22.4	22.3	23.0	23.7
6H	20.1	20.7	20.7	21.3	22.1	23.6	24.2	24.2	24.9	25.6
8H	20.5	21.1	21.2	21.7	22.5	24.8	25.3	25.4	26.0	26.7
Variations with the observer position at spacings(CIE Pub.117):										
S = 1.0H	+ 0.1 / - 0.2					+ 0.1 / - 0.1				
1.5H	+ 0.2 / - 0.3					+ 0.2 / - 0.2				
2.0H	+ 0.2 / - 0.5					+ 0.2 / - 0.3				

CIE Pub.117, 2018 lm Total Lamp Luminous Flux Correct (8log(F/F0) = 2.4)
 Area: 0.1 m2

C Range: 0 - 360DEG	γ Range: 0 - 180DEG
C Interval: 90.0DEG	γ Interval: 1.0DEG
Test Speed: HIGH	Test System:EVERFINE GO-2000B_V1 SYSTEM V2.00.459
Temperature:25.3℃	Humidity:65.0%
Operators:DAMIN	Test Distance:7.380m [K=1.0000]
Test Date:07 August 2025	Remarks:

UTILIZATION FACTORS TABLE

Test:U:120.06V I:0.2453A P:27.538W PF:0.9350 Freq:59.98Hz Lamp Flux:2018.42x1 lm		
NAME: 62674LEDDCS	TYPE:	WEIGHT:
SPEC.:	DIM.:	SERIAL No.: 1
MFR.: EVERFINE	SUR.:	Shielding Angle:

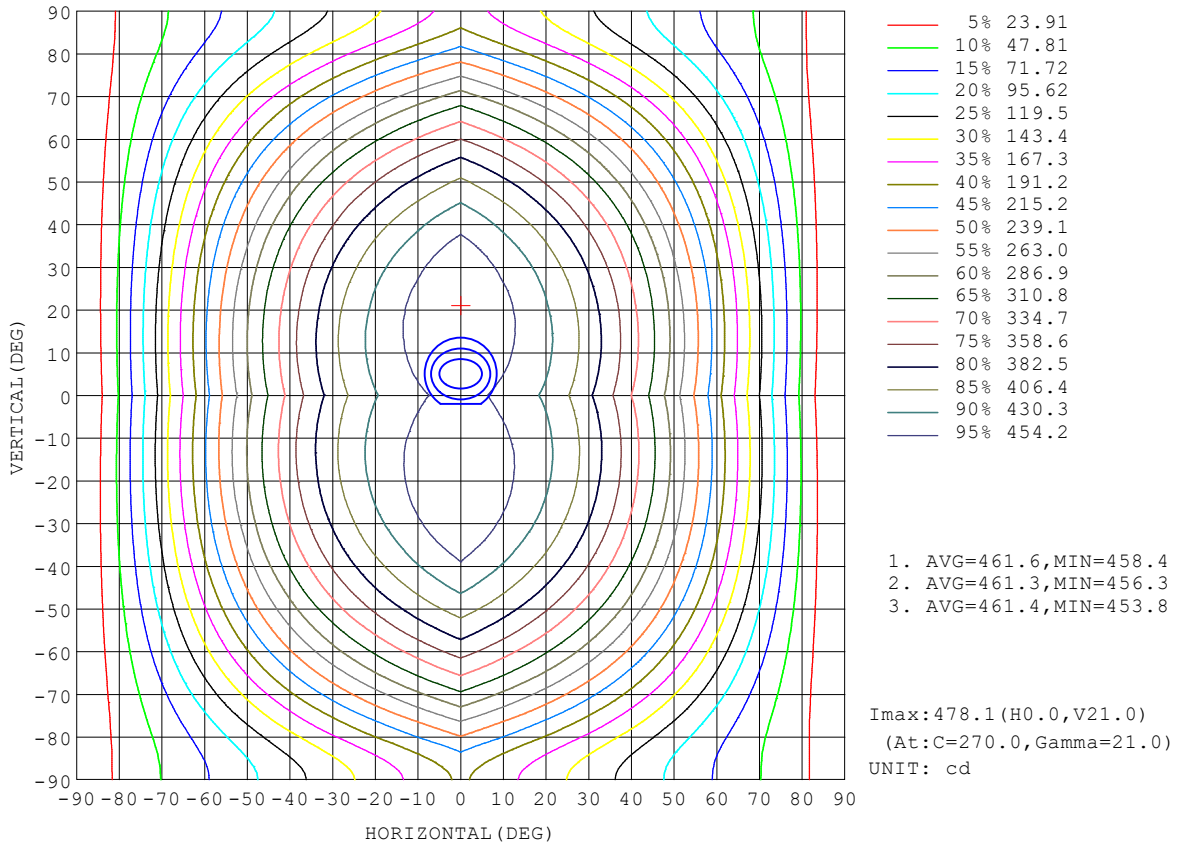
REFLECTANCE										
Ceiling	0.8	0.8	0.8	0.7	0.7	0.7	0.5	0.5	0.5	0
Walls	0.7	0.5	0.3	0.7	0.5	0.3	0.7	0.5	0.3	0
Working plane	0.2	0.2	0.2	0.2	0.2	0.2	0.2	0.2	0.2	0
ROOM INDEX	UTILIZATION FACTORS (PERCENT) $k(RI) \times RCR = 5$									
k = 0.60	50	37	30	49	37	30	47	36	29	23
0.80	59	46	38	58	46	38	55	44	37	29
1.00	67	54	46	65	54	46	62	54	45	36
1.25	74	62	54	72	61	53	68	58	51	42
1.50	79	68	59	77	66	58	72	63	57	47
2.00	87	76	68	84	74	67	79	71	64	54
2.50	91	81	74	88	79	72	82	75	69	58
3.00	95	86	79	91	84	77	85	79	74	62
4.00	99	92	86	96	89	84	89	84	79	66
5.00	102	96	90	98	93	88	92	87	83	70
ROOM INDEX	UF(total)									Direct
According to DIN EN 13032-2 2004			Suspended				SHRNOM = 1.25			

C Range: 0 - 360DEG
 C Interval: 90.0DEG
 Test Speed: HIGH
 Temperature:25.3°C
 Operators:DAMIN
 Test Date:07 August 2025

γ Range: 0 - 180DEG
 γ Interval: 1.0DEG
 Test System:EVERFINE GO-2000B_V1 SYSTEM V2.00.459
 Humidity:65.0%
 Test Distance:7.380m [K=1.0000]
 Remarks:

ISOCANDELA DIAGRAM

Test:U:120.06V I:0.2453A P:27.538W PF:0.9350 Freq:59.98Hz Lamp Flux:2018.42x1 lm		
NAME: 62674LEDDCS	TYPE:	WEIGHT:
SPEC.:	DIM.:	SERIAL No.: 1
MFR.: EVERFINE	SUR.:	Shielding Angle:

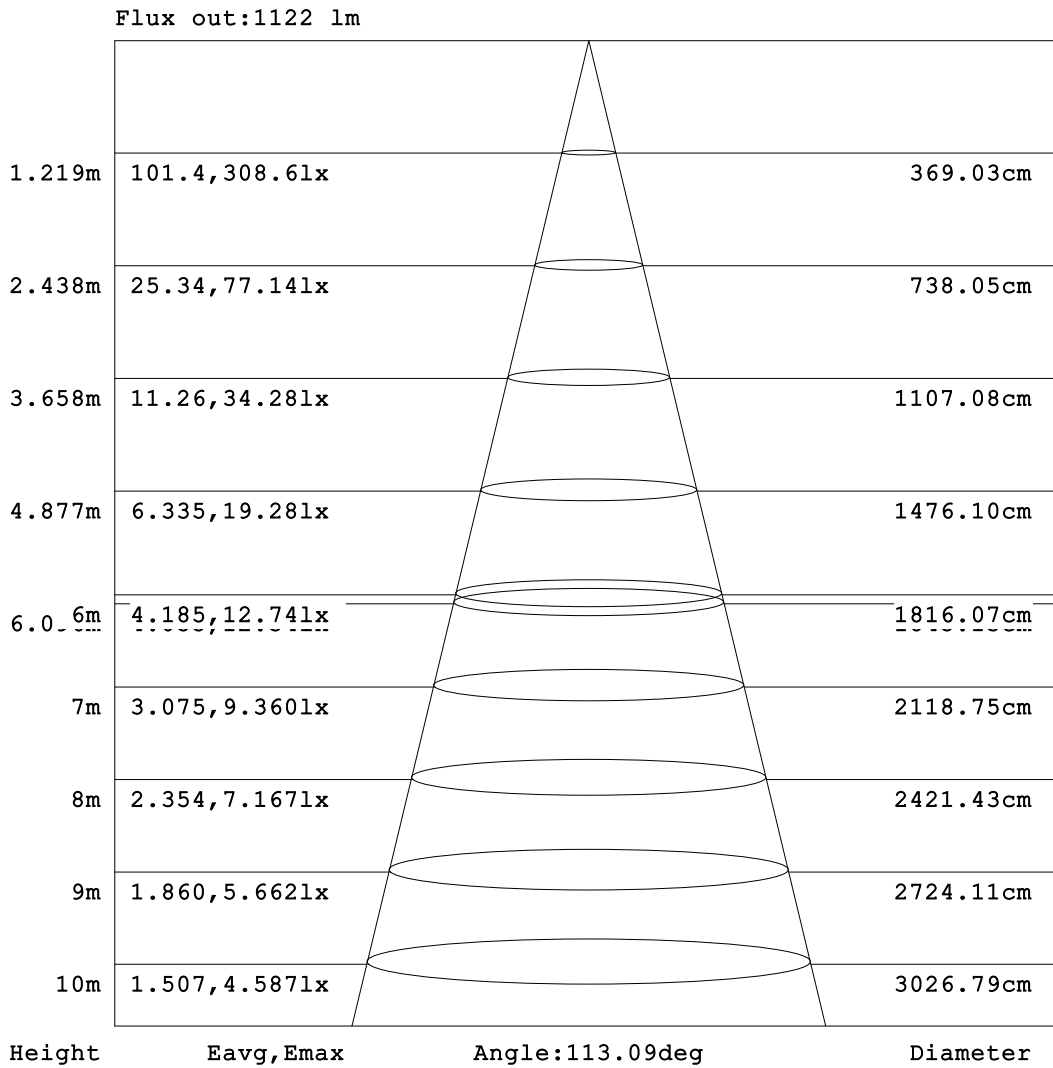


C Range: 0 - 360DEG
C Interval: 90.0DEG
Test Speed: HIGH
Temperature: 25.3 °C
Operators: DAMIN
Test Date: 07 August 2025

γ Range: 0 - 180DEG
γ Interval: 1.0DEG
Test System: EVERFINE GO-2000B_V1 SYSTEM V2.00.459
Humidity: 65.0%
Test Distance: 7.380m [K=1.0000]
Remarks:

AAI Figure

Test:U:120.06V I:0.2453A P:27.538W PF:0.9350 Freq:59.98Hz Lamp Flux:2018.42x1 lm		
NAME: 62674LEDDCS	TYPE:	WEIGHT:
SPEC.:	DIM.:	SERIAL No.: 1
MFR.: EVERFINE	SUR.:	Shielding Angle:



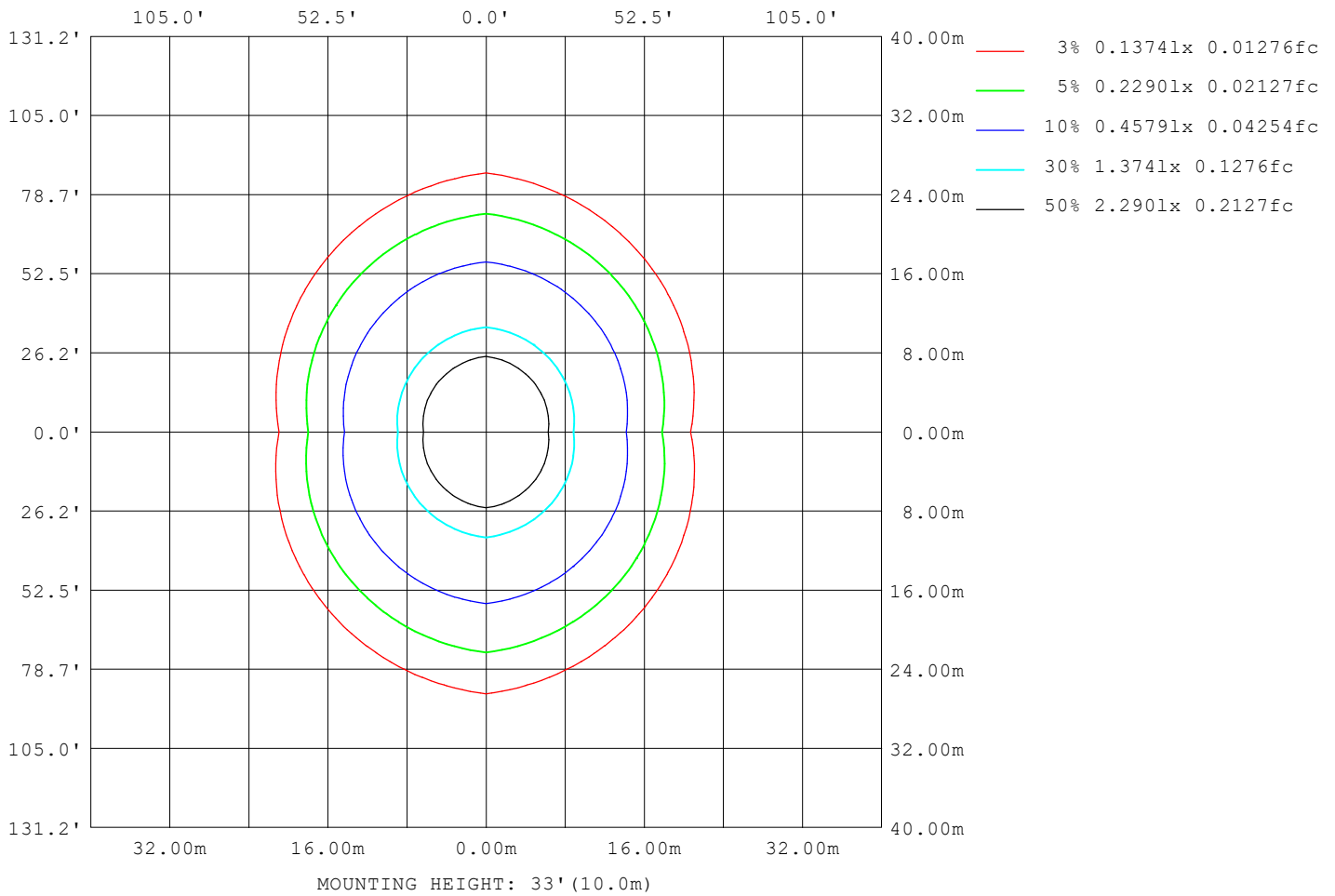
Note:The Curves indicate the illuminated area and the average illumination when the luminaire is at different distance.

C Range: 0 - 360DEG
 C Interval: 90.0DEG
 Test Speed: HIGH
 Temperature:25.3 °C
 Operators:DAMIN
 Test Date:07 August 2025

γ Range: 0 - 180DEG
 γ Interval: 1.0DEG
 Test System:EVERFINE GO-2000B_V1 SYSTEM V2.00.459
 Humidity:65.0%
 Test Distance:7.380m [K=1.0000]
 Remarks:

ISOLUX DIAGRAM

Test:U:120.06V I:0.2453A P:27.538W PF:0.9350 Freq:59.98Hz Lamp Flux:2018.42x1 lm		
NAME: 62674LEDDCS	TYPE:	WEIGHT:
SPEC.:	DIM.:	SERIAL No.: 1
MFR.: EVERFINE	SUR.:	Shielding Angle:



C Range: 0 - 360DEG
 C Interval: 90.0DEG
 Test Speed: HIGH
 Temperature:25.3°C
 Operators:DAMIN
 Test Date:07 August 2025

γ Range: 0 - 180DEG
 γ Interval: 1.0DEG
 Test System:EVERFINE GO-2000B_V1 SYSTEM V2.00.459
 Humidity:65.0%
 Test Distance:7.380m [K=1.0000]
 Remarks:

LED Avg.L Report

Test:U:120.06V I:0.2453A P:27.538W PF:0.9350 Freq:59.98Hz Lamp Flux:2018.42x1 lm		
NAME: 62674LEDDCS	TYPE:	WEIGHT:
SPEC.:	DIM.:	SERIAL No.: 1
MFR.: EVERFINE	SUR.:	Shielding Angle:

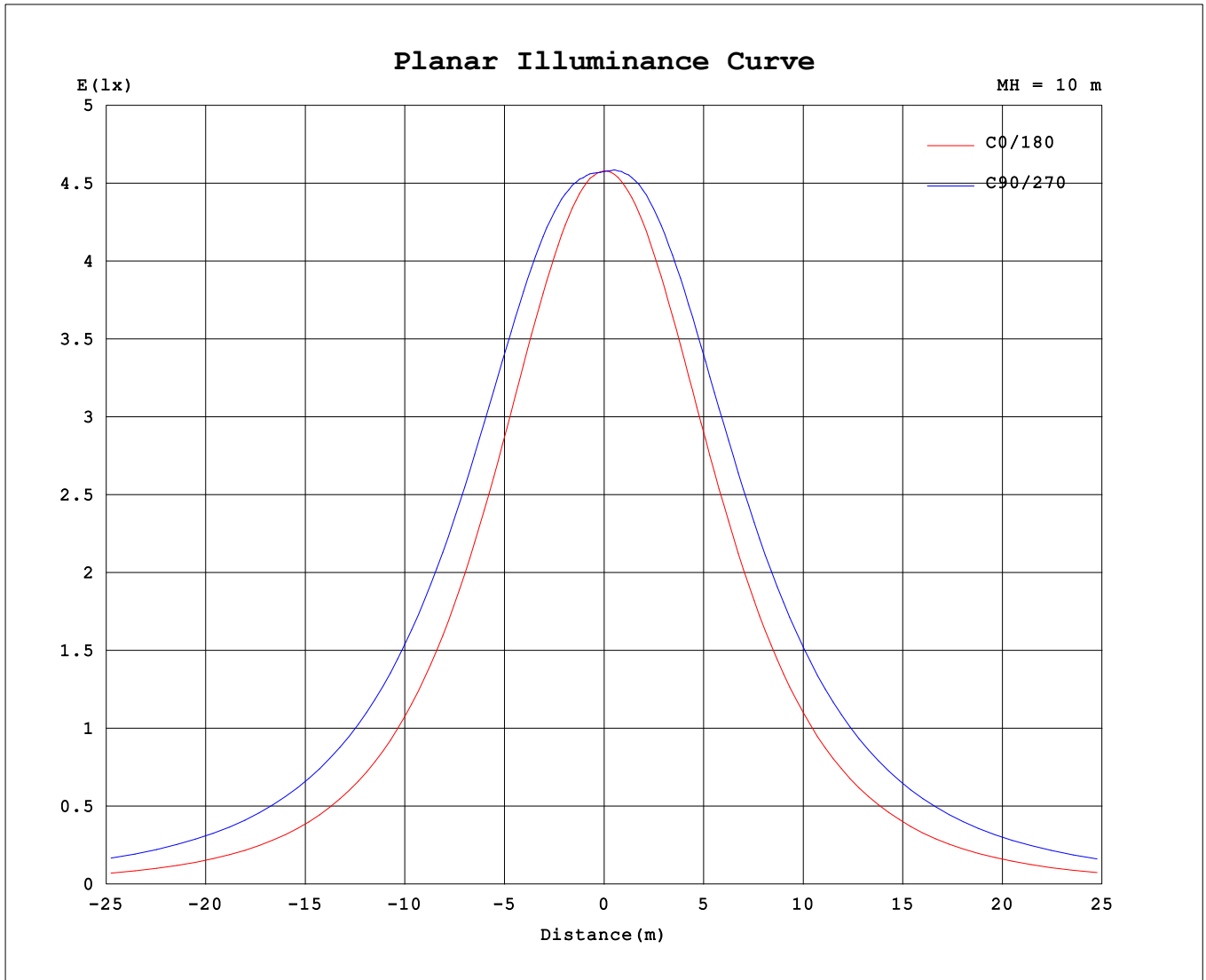
AvgL	cd/m2
L_0~180 (65) av	3878
L_0~180 (75) av	3217
L_0~180 (85) av	1903
L_90~270 (65) av	7896
L_90~270 (75) av	10314
L_90~270 (85) av	23182
L_45 (65) av	6394
L_45 (75) av	7662
L_45 (85) av	15217

Standard: GB/T 29293-2012

C Range: 0 - 360DEG
 C Interval: 90.0DEG
 Test Speed: HIGH
 Temperature:25.3℃
 Operators:DAMIN
 Test Date:07 August 2025

γ Range: 0 - 180DEG
 γ Interval: 1.0DEG
 Test System:EVERFINE GO-2000B_V1 SYSTEM V2.00.459
 Humidity:65.0%
 Test Distance:7.380m [K=1.0000]
 Remarks:

Planar Illuminance Curve



C Range: 0 - 360DEG
 C Interval: 90.0DEG
 Test Speed: HIGH
 Temperature: 25.3 °C
 Operators: DAMIN
 Test Date: 07 August 2025

γ Range: 0 - 180DEG
 γ Interval: 1.0DEG
 Test System: EVERFINE GO-2000B_V1 SYSTEM V2.00.459
 Humidity: 65.0%
 Test Distance: 7.380m [K=1.0000]
 Remarks:

LUMINOUS DISTRIBUTION INTENSITY DATA

Test:U:120.06V I:0.2453A P:27.538W PF:0.9350 Freq:59.98Hz Lamp Flux:2018.42x1 lm		
NAME: 62674LEDDCS	TYPE:	WEIGHT:
SPEC.:	DIM.:	SERIAL No.: 1
MFR.: EVERFINE	SUR.:	Shielding Angle:

Table--1

UNIT: cd

C (DEG) \ γ (DEG)	0	90	180	270															
0	458	458	458	458															
5	455	460	456	463															
10	449	467	451	470															
15	439	474	442	475															
20	425	477	428	477															
25	408	477	412	476															
30	386	472	391	471															
35	362	464	368	461															
40	335	452	341	448															
45	305	436	312	431															
50	272	416	280	411															
55	236	393	245	386															
60	199	367	206	358															
65	160	339	167	329															
70	120	307	127	296															
75	79.3	273	87.3	261															
80	42.5	238	49.3	226															
85	14.5	208	18.6	196															
90	6.48	196	6.32	179															
95	6.32	147	6.30	139															
100	6.60	108	6.61	80.4															
105	6.98	90.9	7.15	69.4															
110	7.40	91.9	7.51	72.3															
115	7.75	75.1	7.67	69.3															
120	7.97	69.2	7.81	63.5															
125	8.12	64.6	7.95	59.0															
130	8.16	61.3	8.06	55.3															
135	8.23	60.7	8.18	52.4															
140	8.30	62.7	8.22	49.1															
145	8.34	63.1	8.22	44.9															
150	8.40	49.6	8.27	45.4															
155	8.50	34.0	8.41	28.0															
160	8.70	28.2	8.59	23.4															
165	8.89	25.5	8.80	20.7															
170	9.03	19.3	8.93	15.4															
175	9.08	10.5	9.06	10.1															
180	9.15	9.23	9.15	9.23															

C Range: 0 - 360DEG
 C Interval: 90.0DEG
 Test Speed: HIGH
 Temperature:25.3℃
 Operators:DAMIN
 Test Date:07 August 2025

γ Range: 0 - 180DEG
 γ Interval: 1.0DEG
 Test System:EVERFINE GO-2000B_V1 SYSTEM V2.00.459
 Humidity:65.0%
 Test Distance:7.380m [K=1.0000]
 Remarks: