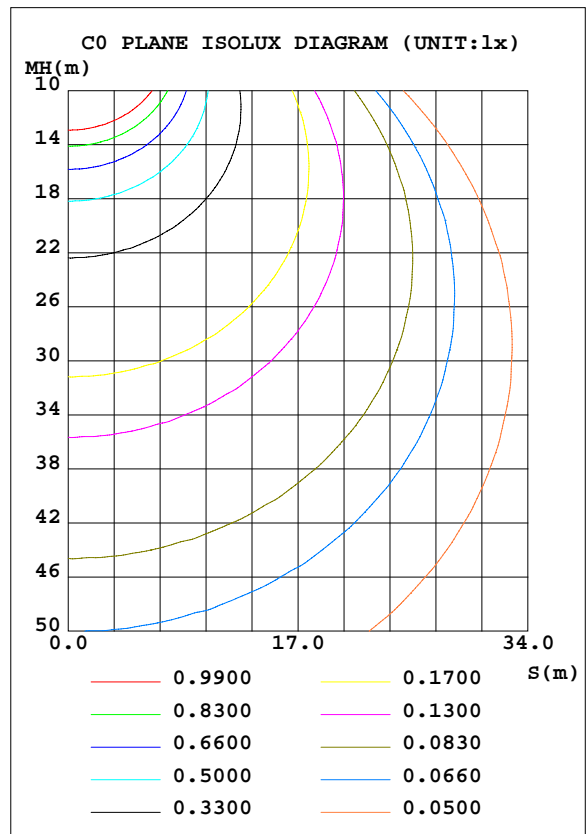
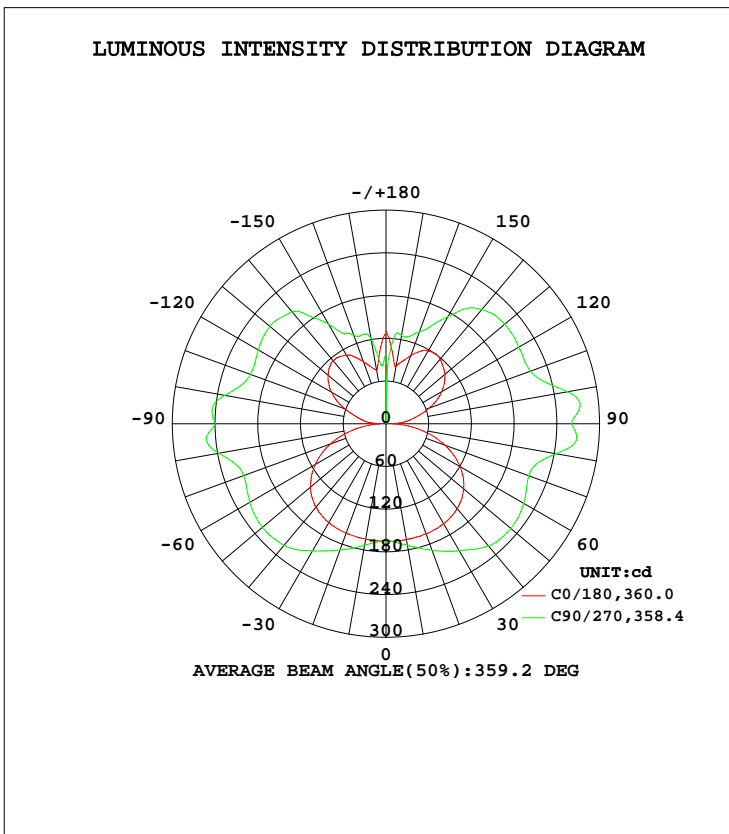


LUMINAIRE PHOTOMETRIC TEST REPORT

Test:U:120.0V I:0.2218A P:26.13W PF:0.9815 Lamp Flux:1993.37x1 lm		
NAME: Wall mounted Luminaires	TYPE:N/A	WEIGHT:N/A
SPEC.:N/A	DIM.: N/A	SERIAL No.:N/A
MFR.: -	SUR.:N/A	Shielding Angle:N/A

DATA OF LAMP		PHOTOMETRIC DATA Eff: 76.29 lm/W			
MODEL	RSZ200715512-10	Imax(cd)	273.9	S/MH(C0/180)	1.46
NOMINAL POWER(W)	30	LOR(%)	100.0	S/MH(C90/270)	1.96
RATED VOLTAGE(V)	120	TOTAL FLUX(lm)	1993.4	η UP, DN(C0-180)	23.8, 26.9
NOMINAL FLUX(lm)	1993.37	CIE CLASS	DIFFUSE	η UP, DN(C180-360)	22.8, 26.5
LAMPS INSIDE	1	η up(%)	46.6	CIBSE SHR NOM	1.75
TEST VOLTAGE(V)	120	η down(%)	53.4	CIBSE SHR MAX	1.75



C Range: 0 - 360DEG
 C Interval: 22.5DEG
 Test Speed: HIGH
 Temperature:24.8DEG
 Operators:East
 Test Date:2020-07-27

γ Range: 0 - 180DEG
 γ Interval: 1.0DEG
 Test System:EVERFINE GO-R5000_V2 SYSTEM V2.0.351
 Humidity:35%
 Test Distance:2.490m [K=1.0000]
 Remarks:

ZONAL FLUX DIAGRAM

ZONAL FLUX DIAGRAM:

γ	C0	C45	C90	C135	C180	C225	C270	C315	γ	Φ zone	Φ total	%lum, lamp
10	165.0	170.2	173.4	169.5	164.7	169.3	173.4	169.8	0- 10	15.97	15.97	0.80,0.80
20	164.5	179.7	189.0	178.6	163.5	178.2	188.7	178.9	10- 20	49.27	65.25	3.27,3.27
30	162.0	188.7	206.0	187.3	160.3	186.8	206.1	188.2	20- 30	84.32	149.6	7.5,7.5
40	155.6	195.2	224.1	192.9	152.8	193.3	223.0	195.0	30- 40	119.1	268.6	13.5,13.5
50	142.4	198.4	229.0	195.4	138.9	194.6	226.3	196.6	40- 50	148.8	417.4	20.9,20.9
60	120.3	187.0	223.6	182.5	115.0	181.9	220.9	184.3	50- 60	165.6	583.1	29.2,29.2
70	88.28	166.9	213.4	161.4	82.95	161.5	212.9	163.5	60- 70	166.7	749.7	37.6,37.6
80	48.36	151.4	242.4	145.8	43.95	145.2	238.9	146.6	70- 80	159.2	908.9	45.6,45.6
90	9.464	136.0	260.4	131.0	8.696	125.5	239.6	124.3	80- 90	155.6	1065	53.4,53.4
100	36.47	153.6	259.3	146.1	35.64	142.4	229.9	139.1	90-100	153.7	1218	61.1,61.1
110	64.52	159.8	216.1	153.9	61.01	152.6	202.5	150.7	100-110	152.9	1371	68.8,68.8
120	90.53	174.3	215.3	169.7	88.40	170.0	207.2	168.7	110-120	153.5	1525	76.5,76.5
130	108.1	182.4	217.8	178.6	106.3	176.1	212.9	177.7	120-130	146.7	1671	83.8,83.8
140	118.7	163.6	209.1	164.4	115.6	147.3	205.1	156.5	130-140	126.2	1798	90.2,90.2
150	118.3	137.4	173.7	136.9	110.8	123.8	161.5	136.7	140-150	93.41	1891	94.9,94.9
160	101.9	125.7	137.2	122.5	92.65	121.7	132.1	129.1	150-160	60.17	1951	97.9,97.9
170	82.49	121.0	126.1	84.85	76.22	85.23	122.2	135.4	160-170	32.41	1984	99.5,99.5
180	130.6	117.5	28.46	115.2	126.0	122.4	97.49	95.22	170-180	9.863	1993	100,100
DEG	LUMINOUS INTENSITY:cd Less than 25% Percent = 61.4 %								UNIT:lm			

Conical surface Flux(90deg): 339.97 lm

%lum = 17.1%
%lamp = 17.1%

Conical surface Flux(120deg): 583.05 lm

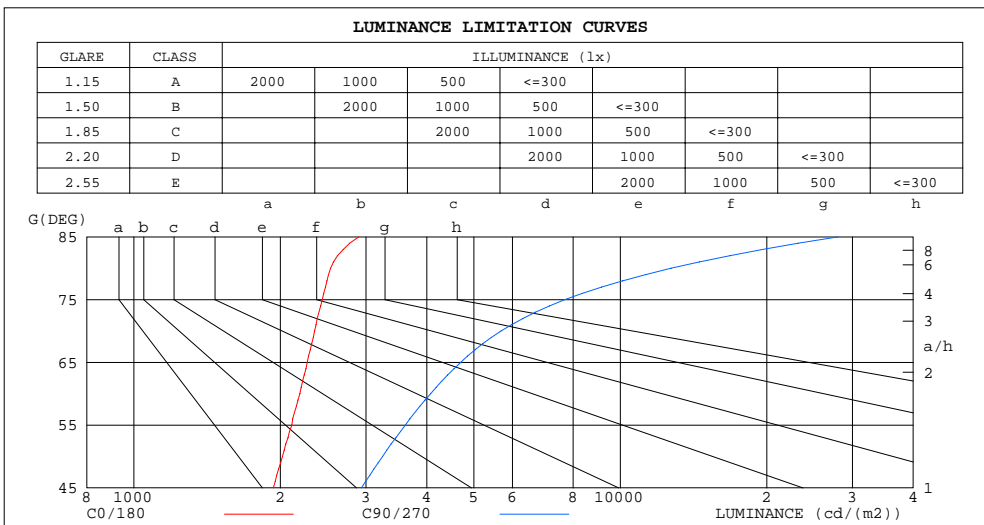
%lum = 29.2%
%lamp = 29.2%

C Range: 0 - 360DEG
C Interval: 22.5DEG
Test Speed: HIGH
Temperature:24.8DEG
Operators:East
Test Date:2020-07-27

γ Range: 0 - 180DEG
γ Interval: 1.0DEG
Test System:EVERFINE GO-R5000_V2 SYSTEM V2.0.351
Humidity:35%
Test Distance:2.490m [K=1.0000]
Remarks:

LUMINANCE LIMITATION CURVES

Test:U:120.0V I:0.2218A P:26.13W PF:0.9815 Lamp Flux:1993.37x1 lm		
NAME: Wall mounted Luminaires	TYPE:N/A	WEIGHT:N/A
SPEC.:N/A	DIM.: N/A	SERIAL No.:N/A
MFR.: -	SUR.:N/A	Shielding Angle:N/A



LUMINANCE cd/(m2)		
G (DEG)	C0/180	C90/270
85	2899	28061
80	2538	12720
75	2439	7694
70	2353	5686
65	2273	4699
60	2193	4075
55	2113	3614
50	2019	3246
45	1935	2936

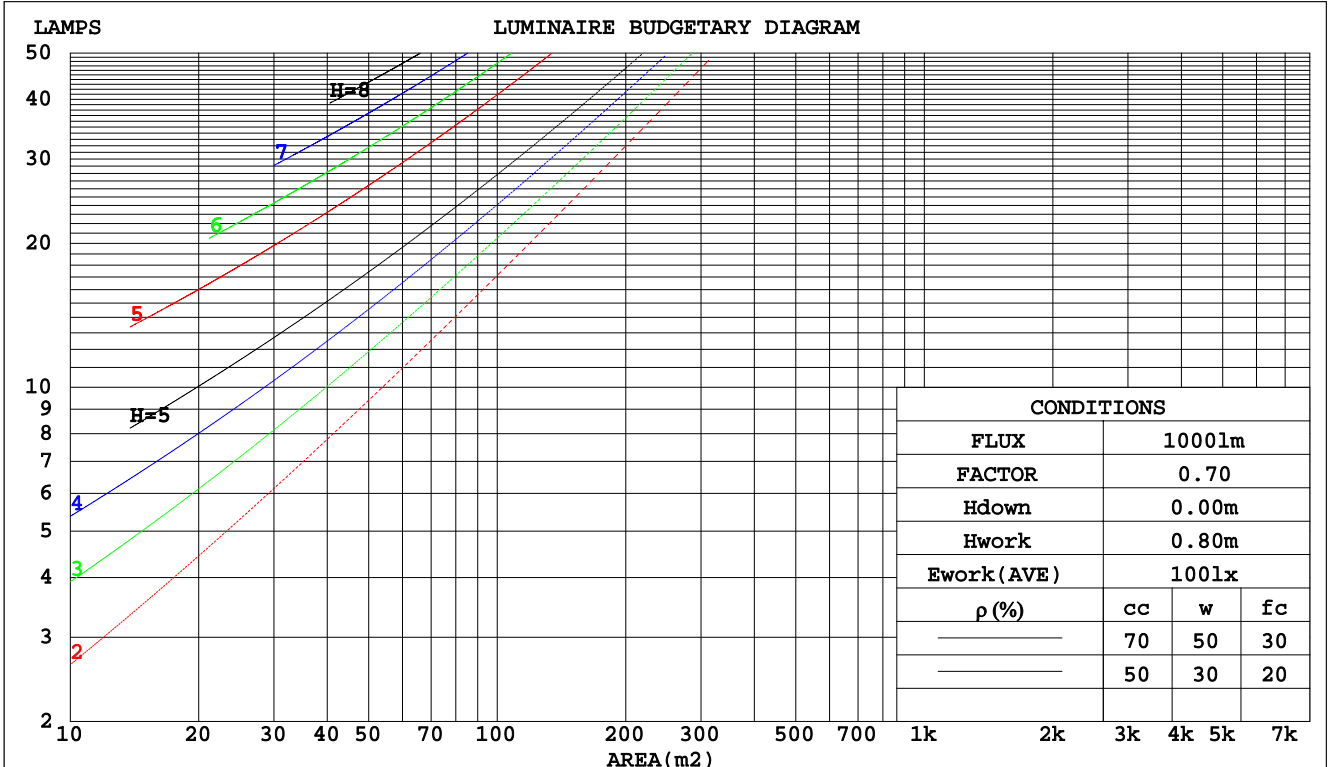
C Range: 0 - 360DEG
 C Interval: 22.5DEG
 Test Speed: HIGH
 Temperature: 24.8DEG
 Operators: East
 Test Date: 2020-07-27

γ Range: 0 - 180DEG
 γ Interval: 1.0DEG
 Test System: EVERFINE GO-R5000_V2 SYSTEM V2.0.351
 Humidity: 35%
 Test Distance: 2.490m [K=1.0000]
 Remarks:

CU AND LUMINAIRE BUDGETARY ESTIMATE DIAGRAM

Test:U:120.0V I:0.2218A P:26.13W PF:0.9815 Lamp Flux:1993.37x1 lm		
NAME: Wall mounted Luminaires	TYPE:N/A	WEIGHT:N/A
SPEC.:N/A	DIM.: N/A	SERIAL No.:N/A
MFR.: -	SUR.:N/A	Shielding Angle:N/A

pcc	80%			70%			50%			30%			10%			0
	50%	30%	10%	50%	30%	10%	50%	30%	10%	50%	30%	10%	50%	30%	10%	0
pw																
pfc	20%			20%			20%			20%			20%			0
RCR	RCR:Room Cavity Ratio						Coefficients of Utilization(CU)									
0.0	1.08	1.08	1.08	1.00	1.00	1.00	.85	.85	.85	.72	.72	.72	.59	.59	.59	.53
1.0	.89	.83	.79	.82	.77	.73	.69	.65	.62	.57	.55	.52	.46	.44	.42	.37
2.0	.75	.68	.61	.70	.63	.57	.58	.53	.49	.48	.44	.41	.39	.36	.33	.28
3.0	.65	.56	.49	.60	.52	.46	.50	.44	.39	.41	.37	.33	.33	.30	.26	.22
4.0	.57	.48	.41	.52	.44	.38	.44	.37	.32	.36	.31	.27	.29	.25	.22	.18
5.0	.50	.41	.34	.46	.38	.32	.39	.32	.27	.32	.27	.23	.26	.22	.18	.15
6.0	.45	.36	.29	.41	.33	.27	.35	.28	.23	.29	.23	.19	.23	.19	.16	.13
7.0	.40	.31	.25	.37	.29	.23	.31	.25	.20	.26	.21	.17	.21	.17	.14	.11
8.0	.36	.28	.22	.33	.26	.20	.28	.22	.18	.23	.18	.15	.19	.15	.12	.09
9.0	.33	.25	.19	.30	.23	.18	.26	.20	.15	.21	.17	.13	.17	.13	.11	.08
10.0	.30	.22	.17	.28	.21	.16	.24	.18	.14	.20	.15	.12	.16	.12	.09	.07



C Range: 0 - 360DEG
 C Interval: 22.5DEG
 Test Speed: HIGH
 Temperature:24.8DEG
 Operators:East
 Test Date:2020-07-27

γ Range: 0 - 180DEG
 γ Interval: 1.0DEG
 Test System:EVERFINE GO-R5000_V2 SYSTEM V2.0.351
 Humidity:35%
 Test Distance:2.490m [K=1.0000]
 Remarks:

WEC AND CCEC

Test:U:120.0V I:0.2218A P:26.13W PF:0.9815 Lamp Flux:1993.37x1 lm		
NAME: Wall mounted Luminaires	TYPE:N/A	WEIGHT:N/A
SPEC.:N/A	DIM.: N/A	SERIAL No.:N/A
MFR.: -	SUR.:N/A	Shielding Angle:N/A

ρcc	80%			70%			50%			30%			10%			0
ρw	50%	30%	10%	50%	30%	10%	50%	30%	10%	50%	30%	10%	50%	30%	10%	0
ρfc	20%			20%			20%			20%			20%			0
RCR	RCR:Room Cavity Ratio						Wall Exitance Coefficients(WEC)									
0.0																
1.0	.385	.219	.069	.363	.207	.066	.323	.186	.059	.287	.165	.053	.253	.146	.047	
2.0	.327	.179	.055	.308	.170	.052	.272	.151	.047	.238	.133	.042	.207	.117	.037	
3.0	.289	.154	.046	.271	.145	.044	.238	.129	.039	.207	.113	.035	.178	.099	.031	
4.0	.259	.135	.040	.243	.127	.038	.212	.113	.034	.184	.099	.030	.157	.086	.026	
5.0	.235	.120	.035	.220	.113	.033	.192	.100	.029	.166	.087	.026	.141	.076	.023	
6.0	.215	.108	.031	.201	.102	.029	.175	.090	.026	.151	.079	.023	.128	.068	.020	
7.0	.198	.098	.028	.185	.092	.026	.161	.082	.024	.139	.071	.021	.118	.061	.018	
8.0	.184	.090	.025	.172	.085	.024	.150	.075	.021	.129	.065	.019	.109	.056	.016	
9.0	.171	.083	.023	.160	.078	.022	.139	.069	.020	.120	.060	.017	.101	.051	.015	
10.0	.160	.077	.021	.150	.072	.020	.130	.064	.018	.112	.056	.016	.095	.048	.014	

ρcc	80%			70%			50%			30%			10%			0
ρw	50%	30%	10%	50%	30%	10%	50%	30%	10%	50%	30%	10%	50%	30%	10%	0
ρfc	20%			20%			20%			20%			20%			0
RCR	RCR:Room Cavity Ratio						Ceiling Cavity Exitance Coefficients(CCEC)									
0.0	.546	.546	.546	.466	.466	.466	.318	.318	.318	.183	.183	.183	.058	.058	.058	
1.0	.543	.513	.486	.465	.441	.419	.318	.303	.290	.183	.175	.168	.059	.056	.054	
2.0	.537	.492	.454	.460	.424	.393	.315	.293	.274	.182	.170	.160	.058	.055	.052	
3.0	.530	.477	.434	.455	.411	.376	.312	.286	.264	.180	.167	.156	.058	.054	.051	
4.0	.523	.465	.421	.449	.402	.365	.309	.280	.257	.179	.164	.152	.057	.053	.050	
5.0	.516	.456	.412	.443	.394	.358	.305	.276	.253	.177	.162	.150	.057	.053	.049	
6.0	.509	.449	.405	.437	.388	.353	.302	.272	.250	.175	.160	.148	.057	.052	.049	
7.0	.502	.442	.400	.432	.383	.349	.299	.269	.247	.173	.158	.147	.056	.052	.049	
8.0	.496	.437	.397	.427	.379	.346	.295	.266	.245	.172	.157	.146	.056	.051	.048	
9.0	.490	.433	.394	.422	.376	.344	.292	.264	.244	.170	.156	.146	.055	.051	.048	
10.0	.484	.429	.392	.418	.372	.342	.290	.262	.243	.169	.155	.145	.055	.051	.048	

C Range: 0 - 360DEG
 C Interval: 22.5DEG
 Test Speed: HIGH
 Temperature:24.8DEG
 Operators:East
 Test Date:2020-07-27

γ Range: 0 - 180DEG
 γ Interval: 1.0DEG
 Test System:EVERFINE GO-R5000_V2 SYSTEM V2.0.351
 Humidity:35%
 Test Distance:2.490m [K=1.0000]
 Remarks:

UGR(Unified Glare Rating) Table

Test:U:120.0V I:0.2218A P:26.13W PF:0.9815 Lamp Flux:1993.37x1 lm										
NAME: Wall mounted Luminaires					TYPE:N/A			WEIGHT:N/A		
SPEC.:N/A					DIM.: N/A			SERIAL No.:N/A		
MFR.: -					SUR.:N/A			Shielding Angle:N/A		
ceiling/cavity	0.7	0.7	0.5	0.5	0.3	0.7	0.7	0.5	0.5	0.3
walls	0.5	0.3	0.5	0.3	0.3	0.5	0.3	0.5	0.3	0.3
working plane	0.2	0.2	0.2	0.2	0.2	0.2	0.2	0.2	0.2	0.2
Room dimensions	Viewed crosswise					Viewed endwise				
x = 2H y = 2H	12.4	13.5	13.2	14.3	15.4	15.0	16.1	15.8	16.9	18.0
3H	14.4	15.4	15.2	16.2	17.4	18.0	19.0	18.9	19.9	21.0
4H	15.3	16.2	16.1	17.1	18.2	19.8	20.7	20.7	21.6	22.8
6H	16.0	16.9	16.9	17.8	19.0	22.1	23.0	23.0	23.9	25.0
8H	16.3	17.2	17.2	18.1	19.2	23.5	24.4	24.4	25.3	26.4
12H	16.6	17.4	17.5	18.3	19.5	25.2	26.0	26.1	26.9	28.1
4H 2H	13.8	14.7	14.7	15.6	16.8	15.6	16.5	16.4	17.4	18.5
3H	16.0	16.8	16.9	17.7	18.9	18.8	19.6	19.7	20.5	21.7
4H	17.0	17.8	17.9	18.7	19.9	20.8	21.6	21.7	22.5	23.7
6H	17.9	18.6	18.9	19.5	20.8	23.3	24.0	24.3	24.9	26.2
8H	18.3	18.9	19.3	19.9	21.1	24.9	25.5	25.8	26.4	27.7
12H	18.6	19.2	19.6	20.2	21.4	26.6	27.2	27.6	28.2	29.4
8H 4H	18.3	18.9	19.2	19.8	21.1	21.2	21.8	22.1	22.7	24.0
6H	19.6	20.1	20.5	21.1	22.3	24.0	24.5	25.0	25.5	26.8
8H	20.1	20.6	21.1	21.6	22.9	25.8	26.2	26.8	27.2	28.5
12H	20.6	21.0	21.6	22.0	23.3	27.8	28.2	28.8	29.2	30.5
12H 4H	18.8	19.3	19.7	20.3	21.6	21.2	21.8	22.1	22.7	24.0
6H	20.3	20.8	21.3	21.8	23.1	24.1	24.6	25.1	25.6	26.9
8H	21.1	21.5	22.1	22.5	23.8	26.0	26.4	27.0	27.4	28.7
Variations with the observer position at spacings:										
S = 1.0H	+ 0.1 / - 0.1					+ 0.1 / - 0.1				
1.5H	+ 0.2 / - 0.3					+ 0.3 / - 0.3				
2.0H	+ 0.3 / - 0.4					+ 0.3 / - 0.4				

CIE Pub.117 Corrected 1993 lm Total Lamp Luminous Flux.(8log(F/F0) = 2.4)

C Range: 0 - 360DEG
 C Interval: 22.5DEG
 Test Speed: HIGH
 Temperature:24.8DEG
 Operators:East
 Test Date:2020-07-27

γ Range: 0 - 180DEG
 γ Interval: 1.0DEG
 Test System:EVERFINE GO-R5000_V2 SYSTEM V2.0.351
 Humidity:35%
 Test Distance:2.490m [K=1.0000]
 Remarks:

UTILIZATION FACTORS TABLE

Test:U:120.0V I:0.2218A P:26.13W PF:0.9815 Lamp Flux:1993.37x1 lm		
NAME: Wall mounted Luminaires	TYPE:N/A	WEIGHT:N/A
SPEC.:N/A	DIM.: N/A	SERIAL No.:N/A
MFR.: -	SUR.:N/A	Shielding Angle:N/A

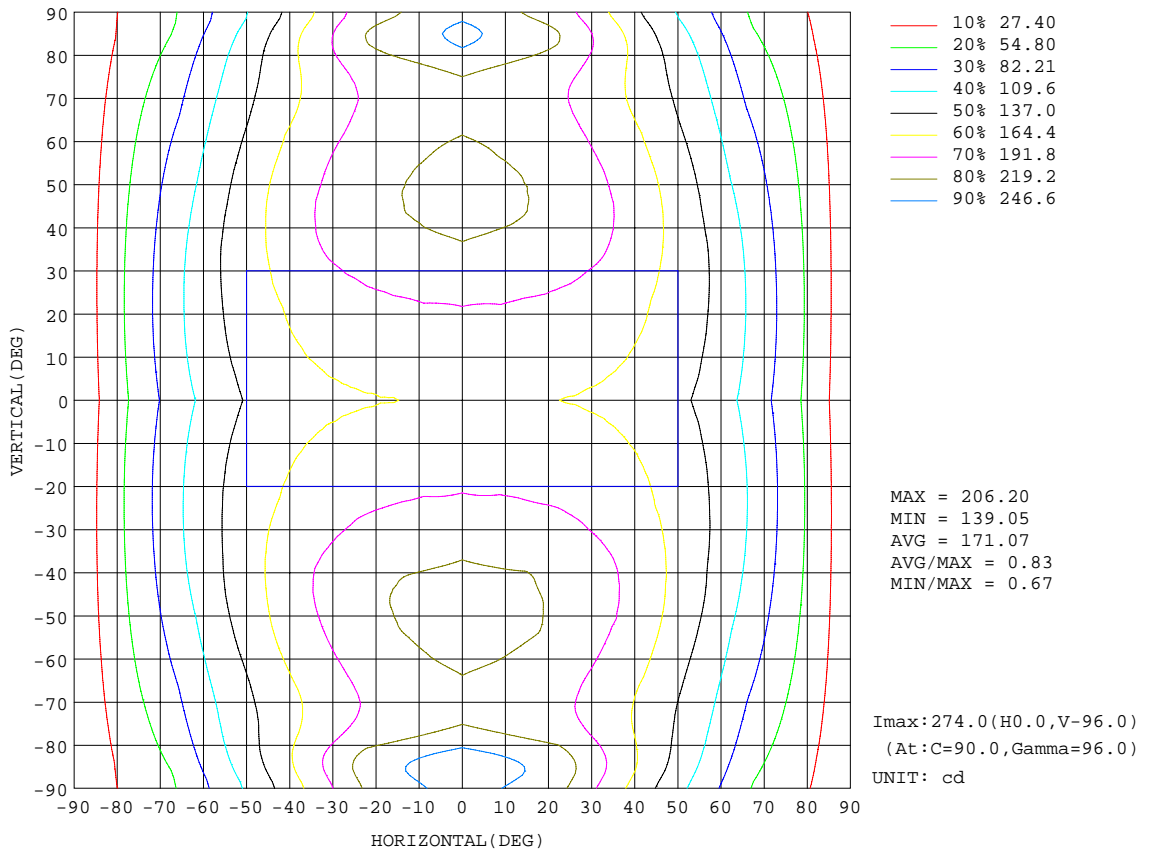
REFLECTANCE										
Ceiling	0.8	0.8	0.8	0.7	0.7	0.7	0.5	0.5	0.5	0
Walls	0.7	0.5	0.3	0.7	0.5	0.3	0.7	0.5	0.3	0
Working plane	0.2	0.2	0.2	0.2	0.2	0.2	0.2	0.2	0.2	0
ROOM INDEX	UTILIZATION FACTORS(PERCENT) $k(RI) \times RCR = 5$									
k = 0.60	38	26	19	36	25	18	33	23	17	9
0.80	47	34	26	44	32	24	39	29	22	13
1.00	54	41	32	51	39	31	45	37	28	17
1.25	61	48	39	57	45	37	50	40	33	20
1.50	67	54	44	62	50	42	54	44	38	23
2.00	74	62	53	69	58	50	59	51	44	27
2.50	79	68	59	74	64	56	63	55	49	30
3.00	83	73	65	77	68	61	66	59	53	32
4.00	88	79	72	82	74	67	70	64	59	36
5.00	91	84	77	85	78	72	72	67	62	38
ROOM INDEX	UF(total)									Direct
According to DIN EN 13032-2 2004			Suspended				SHRNOM = 1.25			

C Range: 0 - 360DEG
 C Interval: 22.5DEG
 Test Speed: HIGH
 Temperature:24.8DEG
 Operators:East
 Test Date:2020-07-27

γ Range: 0 - 180DEG
 γ Interval: 1.0DEG
 Test System:EVERFINE GO-R5000_V2 SYSTEM V2.0.351
 Humidity:35%
 Test Distance:2.490m [K=1.0000]
 Remarks:

ISOCANDELA DIAGRAM

Test:U:120.0V I:0.2218A P:26.13W PF:0.9815 Lamp Flux:1993.37x1 lm		
NAME: Wall mounted Luminaires	TYPE:N/A	WEIGHT:N/A
SPEC.:N/A	DIM.: N/A	SERIAL No.:N/A
MFR.: -	SUR.:N/A	Shielding Angle:N/A

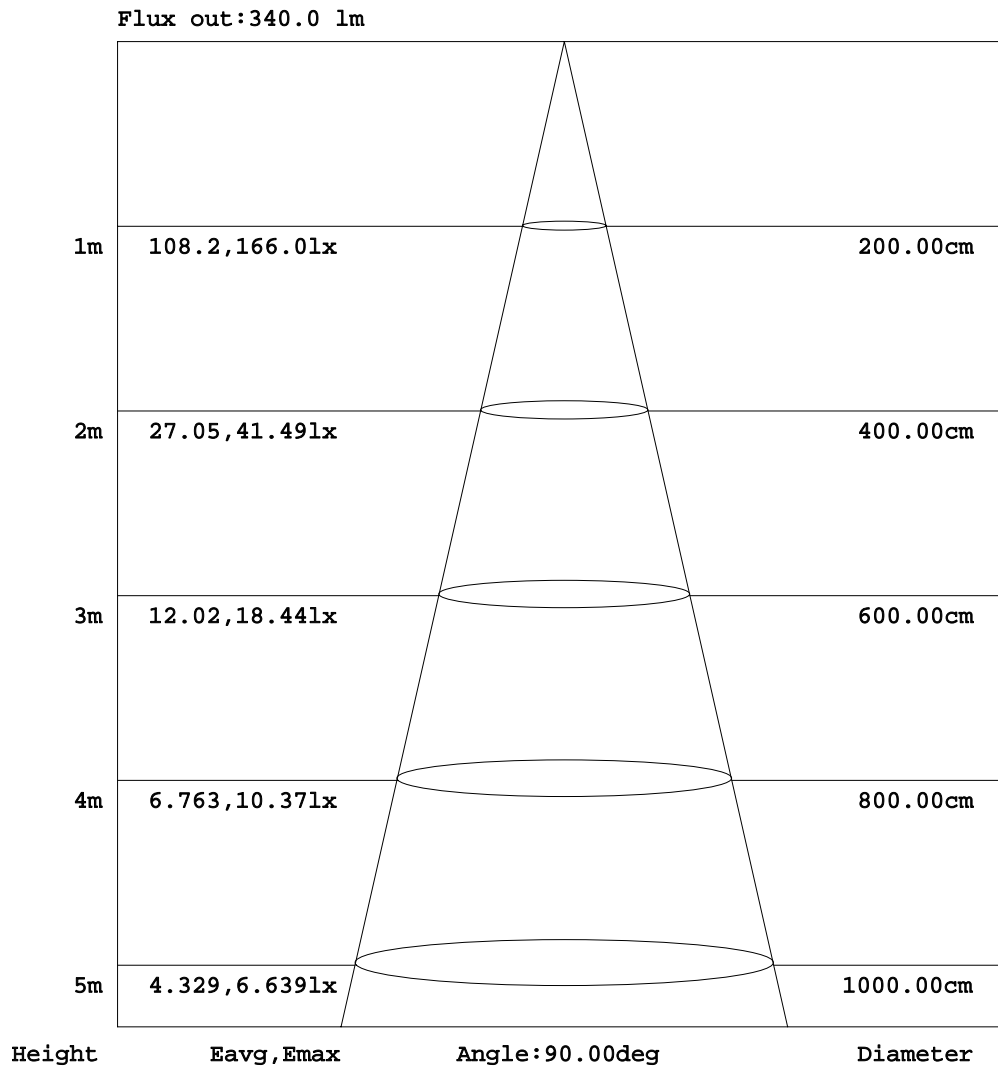


C Range: 0 - 360DEG
 C Interval: 22.5DEG
 Test Speed: HIGH
 Temperature: 24.8DEG
 Operators: East
 Test Date: 2020-07-27

γ Range: 0 - 180DEG
 γ Interval: 1.0DEG
 Test System: EVERFINE GO-R5000_V2 SYSTEM V2.0.351
 Humidity: 35%
 Test Distance: 2.490m [K=1.0000]
 Remarks:

AAI Figure

Test:U:120.0V I:0.2218A P:26.13W PF:0.9815 Lamp Flux:1993.37x1 lm		
NAME: Wall mounted Luminaires	TYPE:N/A	WEIGHT:N/A
SPEC.:N/A	DIM.: N/A	SERIAL No.:N/A
MFR.: -	SUR.:N/A	Shielding Angle:N/A



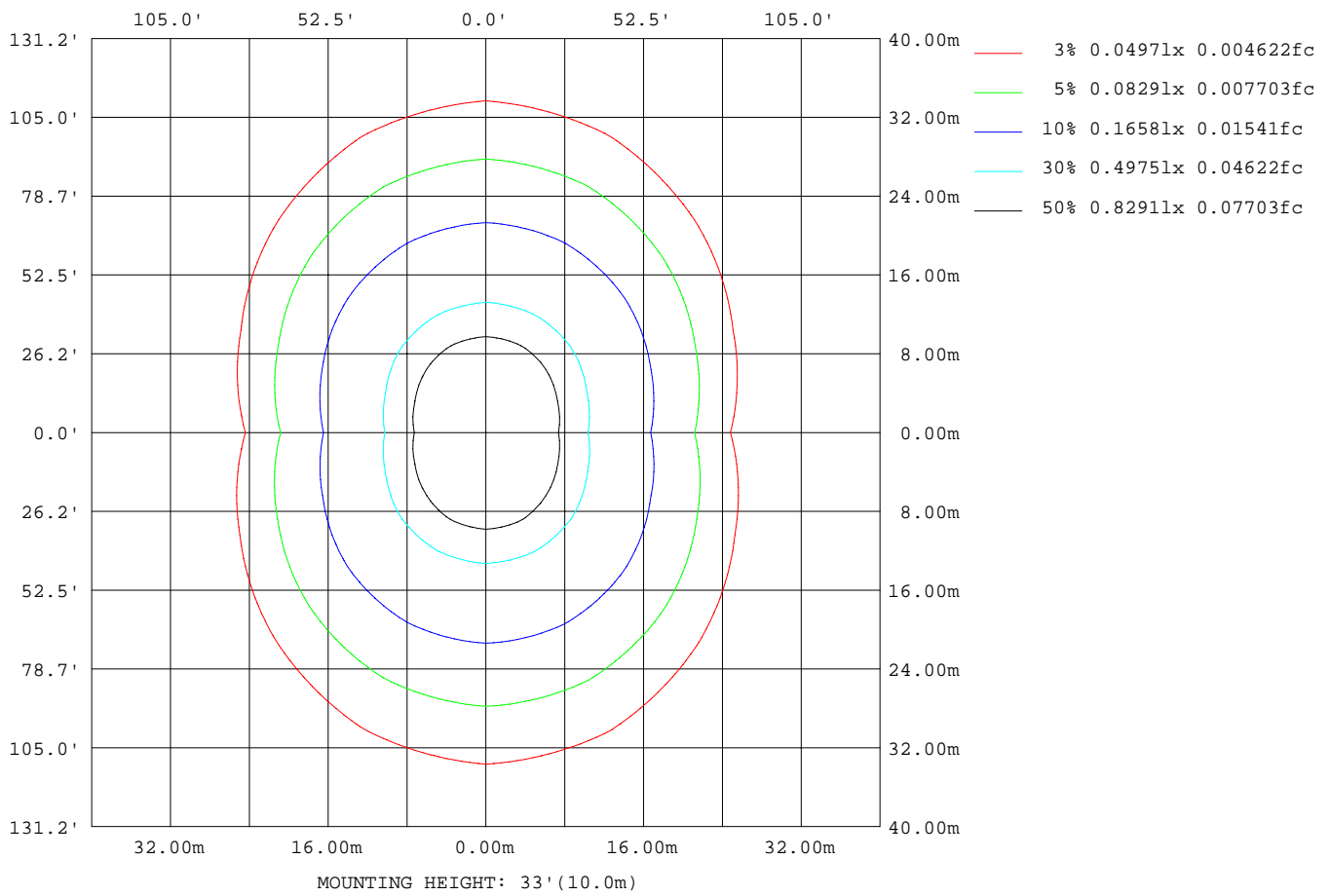
Note:The Curves indicate the illuminated area and the average illumination when the luminaire is at different distance.

C Range: 0 - 360DEG
 C Interval: 22.5DEG
 Test Speed: HIGH
 Temperature:24.8DEG
 Operators:East
 Test Date:2020-07-27

γ Range: 0 - 180DEG
 γ Interval: 1.0DEG
 Test System:EVERFINE GO-R5000_V2 SYSTEM V2.0.351
 Humidity:35%
 Test Distance:2.490m [K=1.0000]
 Remarks:

ISOLUX DIAGRAM

Test:U:120.0V I:0.2218A P:26.13W PF:0.9815 Lamp Flux:1993.37x1 lm		
NAME: Wall mounted Luminaires	TYPE:N/A	WEIGHT:N/A
SPEC.:N/A	DIM.: N/A	SERIAL No.:N/A
MFR.: -	SUR.:N/A	Shielding Angle:N/A



C Range: 0 - 360DEG
 C Interval: 22.5DEG
 Test Speed: HIGH
 Temperature:24.8DEG
 Operators:East
 Test Date:2020-07-27

γ Range: 0 - 180DEG
 γ Interval: 1.0DEG
 Test System:EVERFINE GO-R5000_V2 SYSTEM V2.0.351
 Humidity:35%
 Test Distance:2.490m [K=1.0000]
 Remarks:

LED Avg.L Report

Test:U:120.0V I:0.2218A P:26.13W PF:0.9815 Lamp Flux:1993.37x1 lm		
NAME: Wall mounted Luminaires	TYPE:N/A	WEIGHT:N/A
SPEC.:N/A	DIM.: N/A	SERIAL No.:N/A
MFR.: -	SUR.:N/A	Shielding Angle:N/A

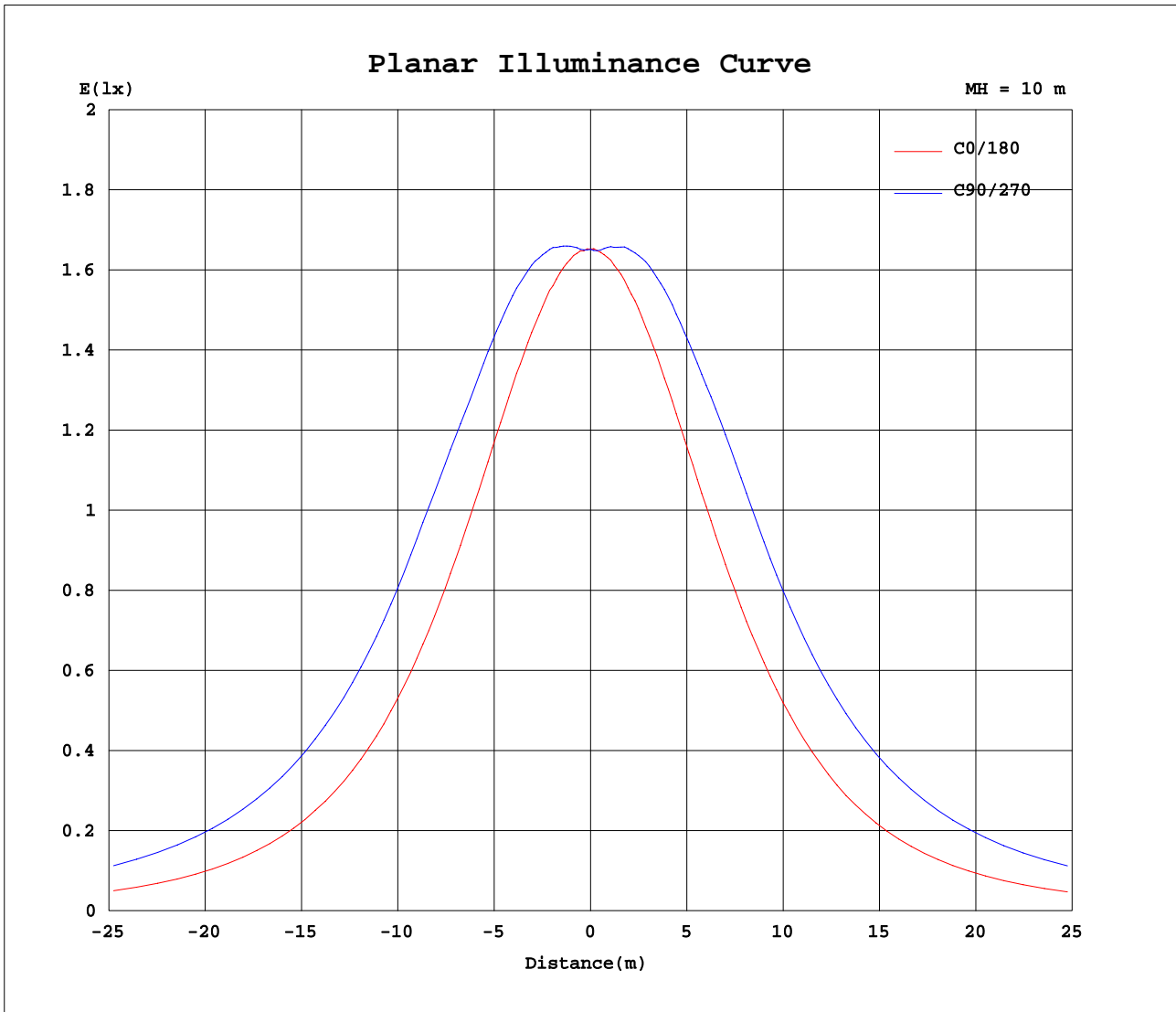
AvgL	cd/m2
L_0~180(65)av	2213
L_0~180(75)av	2346
L_0~180(85)av	2702
L_90~270(65)av	4673
L_90~270(75)av	7699
L_90~270(85)av	27270
L_45(65)av	3756
L_45(75)av	5395
L_45(85)av	14911

Standard: GB/T 29293-2012

C Range: 0 - 360DEG
 C Interval: 22.5DEG
 Test Speed: HIGH
 Temperature:24.8DEG
 Operators:East
 Test Date:2020-07-27

γ Range: 0 - 180DEG
 γ Interval: 1.0DEG
 Test System:EVERFINE GO-R5000_V2 SYSTEM V2.0.351
 Humidity:35%
 Test Distance:2.490m [K=1.0000]
 Remarks:

Planar Illuminance Curve



C Range: 0 - 360DEG
 C Interval: 22.5DEG
 Test Speed: HIGH
 Temperature: 24.8DEG
 Operators: East
 Test Date: 2020-07-27

γ Range: 0 - 180DEG
 γ Interval: 1.0DEG
 Test System: EVERFINE GO-R5000_V2 SYSTEM V2.0.351
 Humidity: 35%
 Test Distance: 2.490m [K=1.0000]
 Remarks:

LUMINOUS DISTRIBUTION INTENSITY DATA

Test:U:120.0V I:0.2218A P:26.13W PF:0.9815 Lamp Flux:1993.37x1 lm		
NAME: Wall mounted Luminaires	TYPE:N/A	WEIGHT:N/A
SPEC.:N/A	DIM.: N/A	SERIAL No.:N/A
MFR.: -	SUR.:N/A	Shielding Angle:N/A

Table--1

UNIT: cd

C(DEG) γ (DEG)	0	22.5	45	67.5	90	112.5	135	157.5	180	202.5	225	247.5	270	292.5	315	337.5			
0	165	165	165	165	165	165	165	165	165	165	165	165	165	165	165	165			
5	165	166	167	167	168	167	167	165	165	165	166	167	167	167	166	165			
10	165	167	170	172	173	172	170	166	165	166	169	172	173	172	170	166			
15	165	168	174	179	181	179	174	167	164	167	174	179	181	179	174	168			
20	164	170	180	187	189	186	179	169	164	169	178	186	189	186	179	170			
25	164	171	185	194	197	193	183	170	162	170	183	193	197	193	184	171			
30	162	173	189	201	206	201	187	171	160	171	187	200	206	201	188	172			
35	160	173	192	209	215	207	191	171	157	170	190	209	216	209	192	172			
40	156	171	195	217	224	215	193	169	153	169	193	216	223	216	195	171			
45	150	169	197	221	228	219	195	166	147	165	196	218	226	219	198	168			
50	142	164	198	222	229	219	195	160	139	160	195	218	226	218	197	163			
55	133	157	194	219	228	216	190	153	128	153	190	215	225	216	192	156			
60	120	147	187	215	224	211	182	143	115	144	182	210	221	211	184	147			
65	105	137	178	208	218	204	173	132	100	132	172	203	216	204	175	135			
70	88.3	122	167	202	213	197	161	118	83.0	116	161	198	213	199	163	120			
75	69.2	106	157	202	219	198	151	101	64.1	100	152	199	219	199	153	103			
80	48.4	88.3	151	216	242	212	146	84.3	44.0	83.2	145	210	239	211	147	86.1			
85	27.7	70.7	148	234	268	231	143	67.1	24.0	65.5	139	220	254	220	140	68.0			
90	9.46	52.7	136	226	260	222	131	50.7	8.70	50.2	126	207	240	206	124	50.3			
95	23.3	65.2	148	239	273	234	143	64.7	25.2	65.2	137	214	245	212	134	64.1			
100	36.5	80.9	154	230	259	222	146	79.4	35.6	79.3	142	205	230	202	139	79.4			
105	49.4	93.8	156	210	229	203	148	92.4	46.6	92.5	146	192	210	190	144	93.1			
110	64.5	108	160	202	216	196	154	106	61.0	106	153	189	202	187	151	107			
115	78.7	120	167	203	214	198	162	118	76.0	118	162	192	203	190	160	119			
120	90.5	124	174	206	215	201	170	127	88.4	116	170	198	207	196	169	122			
125	100	120	180	209	217	204	176	124	98.1	110	175	202	211	201	175	117			
130	108	116	182	210	218	206	179	120	106	107	176	204	213	203	178	112			
135	114	116	179	208	216	205	178	115	112	111	165	201	210	201	170	114			
140	119	117	164	202	209	199	164	116	116	113	147	193	205	198	157	117			
145	121	117	149	185	198	185	150	115	115	116	129	167	184	175	145	119			
150	118	118	137	163	174	163	137	114	111	123	124	143	161	157	137	123			
155	112	119	132	144	152	144	131	113	104	123	124	134	139	140	135	127			
160	102	117	126	135	137	134	123	104	92.6	102	122	125	132	132	129	130			
165	91.4	112	125	126	127	125	109	87.2	82.8	85.8	102	120	129	130	131	133			
170	82.5	97.3	121	127	126	115	84.8	76.8	76.2	76.7	85.2	93.8	122	135	135	122			
175	102	99.8	112	120	119	79.2	90.2	96.1	101	101	102	99.5	83.1	115	118	110			
180	131	125	117	97.2	28.5	95.7	115	124	126	126	122	115	97.5	15.0	95.2	112			

C Range: 0 - 360DEG
 C Interval: 22.5DEG
 Test Speed: HIGH
 Temperature:24.8DEG
 Operators:East
 Test Date:2020-07-27

γ Range: 0 - 180DEG
 γ Interval: 1.0DEG
 Test System:EVERFINE GO-R5000_V2 SYSTEM V2.0.351
 Humidity:35%
 Test Distance:2.490m [K=1.0000]
 Remarks: