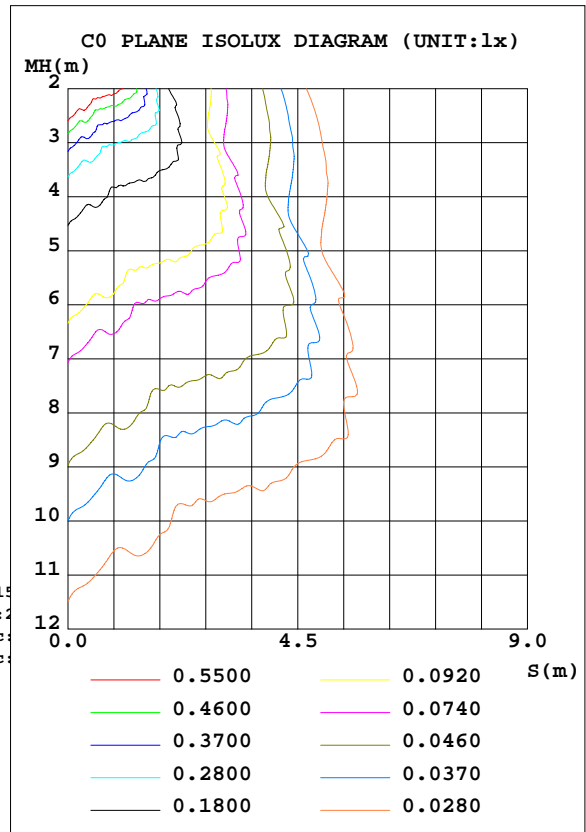
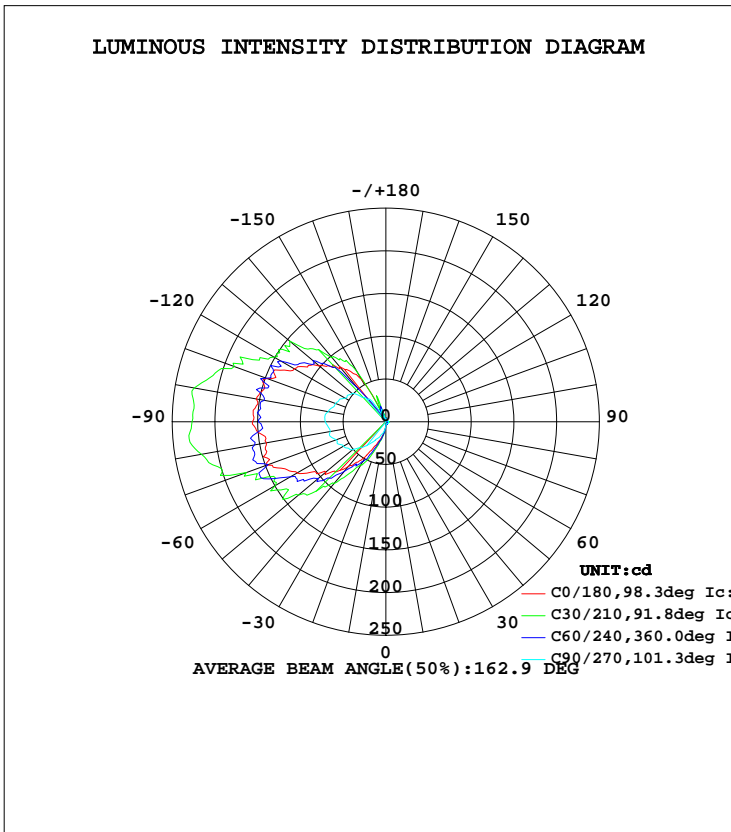


LUMINAIRE PHOTOMETRIC TEST REPORT

Test:U:120.0V I:0.0744A P:8.481W PF:0.9501 Lamp Flux:505.663x1 lm		
NAME:	TYPE:	WEIGHT:
SPEC.:	DIM.:	SERIAL No.:
MFR.: Access Lighting	SUR.:	PROTECTION ANGLE:

DATA OF LAMP		PHOTOMETRIC DATA			
MODEL	LED-VL-20001	Imax(cd)	231.2	S/MH(C0/180)	7.48
NOMINAL POWER(W)	9	LOR(%)	100.0	S/MH(C90/270)	5.31
RATED VOLTAGE(V)	120	TOTAL FLUX(lm)	505.66	η UP, DN(C0-180)	8.1,8.3
NOMINAL FLUX(lm)	505.663	CIE CLASS	DIFFUSE	η UP, DN(C180-360)	41.5,42.0
LAMPS INSIDE	1	η up(%)	49.6	CIBSE SHR NOM	0.00
TEST VOLTAGE(V)		η down(%)	50.4	CIBSE SHR MAX	1.00



C Range: 0 - 360DEG
 C Interval: 15.0DEG
 Test Speed: HIGH
 Temperature:25.3DEG
 Operators:
 Test Date:2020-10-28

γ Range: 0 - 180DEG
 γ Interval: 1.0DEG
 Test System:EVERFINE GO-2000B_V1 SYSTEM V2.0.291
 Humidity:65.0%
 Test Distance:7.500m [K=1.0000]
 Remarks:

ZONAL FLUX DIAGRAM

ZONAL FLUX DIAGRAM:

γ	C0	C45	C90	C135	C180	C225	C270	C315	γ	Φ zone	Φ total	Φ lum,lamp
10	3.074	3.154	2.816	6.675	12.35	15.74	10.28	3.139	0- 10	0.5689	0.5689	0.11,0.11
20	2.977	3.197	2.781	9.372	23.98	32.52	16.44	2.862	10- 20	2.727	3.296	0.65,0.65
30	3.289	2.819	2.722	11.98	45.26	60.06	25.01	2.966	20- 30	7.330	10.63	2.1,2.1
40	2.728	2.045	2.888	13.59	68.41	94.98	36.95	3.077	30- 40	14.63	25.26	5,5
50	1.887	2.118	3.177	16.85	91.83	125.2	50.78	3.016	40- 50	25.12	50.38	9.96,9.96
60	1.833	2.234	3.335	20.24	119.9	152.4	57.31	3.012	50- 60	37.06	87.44	17.3,17.3
70	1.833	2.388	3.743	22.70	148.5	158.7	61.96	3.081	60- 70	47.01	134.4	26.6,26.6
80	1.841	2.685	3.720	23.02	142.0	199.9	66.28	2.688	70- 80	57.11	191.6	37.9,37.9
90	1.841	2.957	3.355	21.93	156.3	214.9	70.92	2.627	80- 90	63.05	254.6	50.4,50.4
100	1.802	2.518	3.139	21.77	154.1	207.9	68.79	2.531	90-100	63.19	317.8	62.8,62.8
110	1.691	2.214	3.139	21.75	148.3	186.0	62.78	2.595	100-110	58.00	375.8	74.3,74.3
120	1.591	2.026	1.679	20.05	124.3	135.5	55.24	1.934	110-120	47.44	423.2	83.7,83.7
130	1.548	1.860	1.567	17.18	101.6	131.6	51.73	2.573	120-130	37.32	460.6	91.1,91.1
140	1.607	1.756	1.425	12.38	84.57	93.44	36.01	2.530	130-140	26.00	486.6	96.2,96.2
150	1.429	1.652	1.325	3.536	58.14	12.25	12.20	2.842	140-150	13.66	500.2	98.9,98.9
160	1.483	1.641	1.616	3.050	8.129	5.645	15.36	1.405	150-160	4.034	504.2	99.7,99.7
170	1.521	1.637	2.733	3.351	4.262	4.163	3.112	0.9899	160-170	1.158	505.4	99.9,99.9
180	4.726	4.294	3.478	3.243	4.733	4.256	3.501	3.239	170-180	0.2563	505.7	100,100
DEG	LUMINOUS INTENSITY:cd									UNIT:lm		

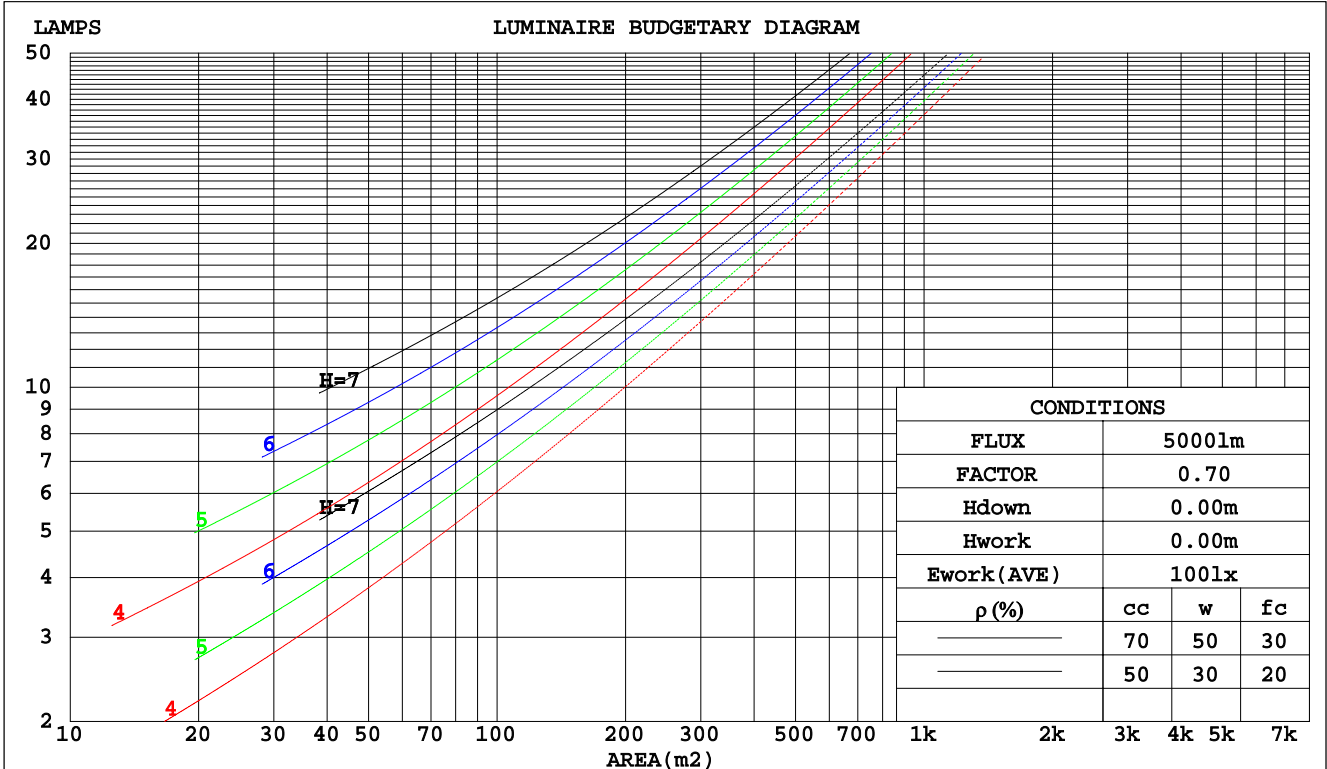
C Range: 0 - 360DEG
C Interval: 15.0DEG
Test Speed: HIGH
Temperature:25.3DEG
Operators:
Test Date:2020-10-28

γ Range: 0 - 180DEG
 γ Interval: 1.0DEG
Test System:EVERFINE GO-2000B_V1 SYSTEM V2.0.291
Humidity:65.0%
Test Distance:7.500m [K=1.0000]
Remarks:

CU AND LUMINAIRE BUDGETARY ESTIMATE DIAGRAM

Test:U:120.0V I:0.0744A P:8.481W PF:0.9501 Lamp Flux:505.663x1 lm		
NAME:	TYPE:	WEIGHT:
SPEC.:	DIM.:	SERIAL No.:
MFR.: Access Lighting	SUR.:	PROTECTION ANGLE:

pcc	80%			70%			50%			30%			10%			0
pw	50%	30%	10%	50%	30%	10%	50%	30%	10%	50%	30%	10%	50%	30%	10%	0
pfc	20%			20%			20%			20%			20%			0
RCR	RCR:Room Cavity Ratio						Coefficients of Utilization(CU)									
0.0	1.07	1.07	1.07	.99	.99	.99	.84	.84	.84	.69	.69	.69	.56	.56	.56	.50
1.0	.84	.78	.72	.77	.72	.67	.64	.59	.55	.51	.48	.45	.40	.37	.35	.29
2.0	.70	.62	.54	.64	.56	.50	.52	.46	.41	.41	.37	.33	.31	.28	.25	.20
3.0	.60	.50	.42	.54	.46	.39	.44	.37	.32	.35	.29	.25	.26	.22	.19	.14
4.0	.52	.42	.34	.47	.38	.31	.38	.31	.25	.30	.24	.20	.22	.18	.14	.10
5.0	.45	.35	.28	.41	.32	.26	.33	.26	.21	.26	.21	.16	.19	.15	.12	.08
6.0	.40	.30	.24	.36	.28	.21	.30	.23	.17	.23	.18	.13	.17	.13	.09	.06
7.0	.36	.26	.20	.32	.24	.18	.26	.20	.15	.21	.15	.11	.15	.11	.08	.05
8.0	.32	.23	.17	.29	.21	.16	.24	.17	.13	.19	.13	.10	.14	.10	.07	.04
9.0	.29	.21	.15	.26	.19	.14	.22	.15	.11	.17	.12	.08	.13	.09	.06	.03
10.0	.26	.18	.13	.24	.17	.12	.20	.14	.10	.16	.11	.07	.12	.08	.05	.03



C Range: 0 - 360DEG
 C Interval: 15.0DEG
 Test Speed: HIGH
 Temperature: 25.3DEG
 Operators:
 Test Date: 2020-10-28

γ Range: 0 - 180DEG
 γ Interval: 1.0DEG
 Test System: EVERFINE GO-2000B_V1 SYSTEM V2.0.291
 Humidity: 65.0%
 Test Distance: 7.500m [K=1.0000]
 Remarks:

WEC AND CCEC

Test:U:120.0V I:0.0744A P:8.481W PF:0.9501 Lamp Flux:505.663x1 lm		
NAME:	TYPE:	WEIGHT:
SPEC.:	DIM.:	SERIAL No.:
MFR.: Access Lighting	SUR.:	PROTECTION ANGLE:

ρcc	80%			70%			50%			30%			10%			0
ρw	50%	30%	10%	50%	30%	10%	50%	30%	10%	50%	30%	10%	50%	30%	10%	0
ρfc	20%			20%			20%			20%			20%			0
RCR	RCR:Room Cavity Ratio						Wall Exitance Coefficients(WEC)									
0.0																
1.0	.454	.258	.082	.432	.246	.078	.390	.224	.071	.351	.203	.065	.316	.183	.059	
2.0	.370	.203	.062	.350	.193	.059	.311	.173	.054	.276	.155	.048	.243	.137	.043	
3.0	.318	.169	.051	.299	.160	.048	.264	.143	.044	.232	.127	.039	.201	.111	.035	
4.0	.280	.146	.043	.263	.138	.041	.231	.122	.037	.201	.108	.033	.173	.094	.029	
5.0	.251	.128	.037	.235	.121	.035	.206	.107	.032	.178	.094	.028	.152	.081	.024	
6.0	.227	.114	.033	.213	.108	.031	.186	.095	.028	.160	.083	.024	.136	.072	.021	
7.0	.208	.103	.029	.195	.097	.028	.169	.086	.025	.145	.075	.022	.123	.064	.019	
8.0	.191	.094	.026	.179	.088	.025	.156	.078	.022	.133	.068	.019	.113	.058	.017	
9.0	.177	.086	.024	.166	.081	.023	.144	.071	.020	.123	.062	.018	.104	.053	.015	
10.0	.165	.079	.022	.155	.075	.021	.134	.066	.018	.115	.057	.016	.096	.049	.014	

ρcc	80%			70%			50%			30%			10%			0
ρw	50%	30%	10%	50%	30%	10%	50%	30%	10%	50%	30%	10%	50%	30%	10%	0
ρfc	20%			20%			20%			20%			20%			0
RCR	RCR:Room Cavity Ratio						Ceiling Cavity Exitance Coefficients(CCEC)									
0.0	.569	.569	.569	.486	.486	.486	.332	.332	.332	.191	.191	.191	.061	.061	.061	
1.0	.572	.536	.504	.489	.460	.434	.335	.317	.300	.193	.183	.175	.062	.059	.056	
2.0	.567	.515	.472	.485	.444	.408	.333	.307	.285	.192	.179	.167	.062	.058	.054	
3.0	.560	.501	.454	.480	.432	.393	.329	.300	.276	.190	.175	.163	.061	.057	.053	
4.0	.552	.489	.441	.474	.423	.383	.326	.295	.270	.189	.173	.160	.061	.056	.053	
5.0	.545	.481	.433	.468	.416	.377	.322	.290	.266	.187	.171	.158	.060	.056	.052	
6.0	.537	.473	.427	.462	.410	.372	.319	.287	.263	.185	.169	.157	.060	.055	.052	
7.0	.530	.467	.423	.456	.405	.369	.315	.284	.261	.183	.167	.156	.059	.055	.051	
8.0	.523	.462	.420	.450	.401	.366	.312	.281	.260	.181	.166	.155	.059	.054	.051	
9.0	.517	.458	.417	.445	.397	.364	.309	.279	.259	.180	.165	.154	.058	.054	.051	
10.0	.511	.454	.415	.441	.394	.363	.306	.277	.258	.178	.164	.154	.058	.054	.051	

C Range: 0 - 360DEG
 C Interval: 15.0DEG
 Test Speed: HIGH
 Temperature:25.3DEG
 Operators:
 Test Date:2020-10-28

γ Range: 0 - 180DEG
 γ Interval: 1.0DEG
 Test System:EVERFINE GO-2000B_V1 SYSTEM V2.0.291
 Humidity:65.0%
 Test Distance:7.500m [K=1.0000]
 Remarks:

UGR(Unified Glare Rating) Table

Test:U:120.0V I:0.0744A P:8.481W PF:0.9501 Lamp Flux:505.663x1 lm										
NAME:					TYPE:			WEIGHT:		
SPEC.:					DIM.:			SERIAL No.:		
MFR.: Access Lighting					SUR.:			PROTECTION ANGLE:		
ceiling/cavity	0.7	0.7	0.5	0.5	0.3	0.7	0.7	0.5	0.5	0.3
walls	0.5	0.3	0.5	0.3	0.3	0.5	0.3	0.5	0.3	0.3
working plane	0.2	0.2	0.2	0.2	0.2	0.2	0.2	0.2	0.2	0.2
Room dimensions	Viewed crosswise					Viewed endwise				
x = 2H y = 2H	-12.4	-11.3	-11.5	-10.3	-9.2	-11.2	-10.1	-10.3	-9.2	-8.0
3H	-9.2	-8.2	-8.3	-7.2	-6.0	-7.5	-6.5	-6.6	-5.6	-4.4
4H	-7.4	-6.4	-6.5	-5.5	-4.3	-5.4	-4.4	-4.5	-3.4	-2.2
6H	-5.4	-4.5	-4.5	-3.6	-2.3	-2.9	-1.9	-2.0	-1.0	0.2
8H	-4.4	-3.5	-3.4	-2.5	-1.3	-1.5	-0.6	-0.5	0.4	1.6
12H	-3.2	-2.3	-2.2	-1.3	-0.1	0.1	1.0	1.1	2.0	3.2
4H 2H	-11.2	-10.2	-10.3	-9.3	-8.0	-10.4	-9.4	-9.5	-8.5	-7.3
3H	-7.8	-6.9	-6.8	-5.9	-4.7	-6.8	-5.9	-5.9	-5.0	-3.7
4H	-5.7	-4.9	-4.8	-3.9	-2.7	-4.6	-3.8	-3.7	-2.9	-1.6
6H	-3.5	-2.8	-2.5	-1.8	-0.5	-2.2	-1.4	-1.2	-0.4	0.8
8H	-2.4	-1.7	-1.4	-0.7	0.6	-0.7	-0.0	0.3	1.0	2.3
12H	-1.2	-0.5	-0.2	0.5	1.8	1.1	1.7	2.1	2.7	4.0
8H 4H	-4.7	-4.0	-3.7	-3.0	-1.7	-4.0	-3.3	-3.0	-2.3	-1.0
6H	-1.7	-1.2	-0.7	-0.1	1.2	-1.4	-0.8	-0.4	0.2	1.5
8H	-0.3	0.3	0.7	1.3	2.6	0.1	0.7	1.1	1.7	3.0
12H	1.1	1.6	2.1	2.6	4.0	1.9	2.4	3.0	3.4	4.8
12H 4H	-4.5	-3.8	-3.5	-2.8	-1.5	-3.6	-3.0	-2.6	-2.0	-0.7
6H	-1.3	-0.8	-0.3	0.2	1.6	-1.0	-0.4	0.0	0.6	1.9
8H	0.4	0.9	1.5	1.9	3.3	0.6	1.1	1.6	2.1	3.4
Variations with the observer position at spacings:										
S = 1.0H	+ 0.1 / - 0.1					+ 0.1 / - 0.1				
1.5H	+ 0.3 / - 0.3					+ 0.4 / - 0.3				
2.0H	+ 0.3 / - 0.4					+ 0.6 / - 0.5				

CIE Pub.117 Corrected 505.7 lm Total Lamp Luminous Flux. (8log(F/F0) = -2.4)

C Range: 0 - 360DEG
 C Interval: 15.0DEG
 Test Speed: HIGH
 Temperature:25.3DEG
 Operators:
 Test Date:2020-10-28

γ Range: 0 - 180DEG
 γ Interval: 1.0DEG
 Test System:EVERFINE GO-2000B_V1 SYSTEM V2.0.291
 Humidity:65.0%
 Test Distance:7.500m [K=1.0000]
 Remarks:

UTILIZATION FACTORS TABLE

Test:U:120.0V I:0.0744A P:8.481W PF:0.9501 Lamp Flux:505.663x1 lm		
NAME:	TYPE:	WEIGHT:
SPEC.:	DIM.:	SERIAL No.:
MFR.: Access Lighting	SUR.:	PROTECTION ANGLE:

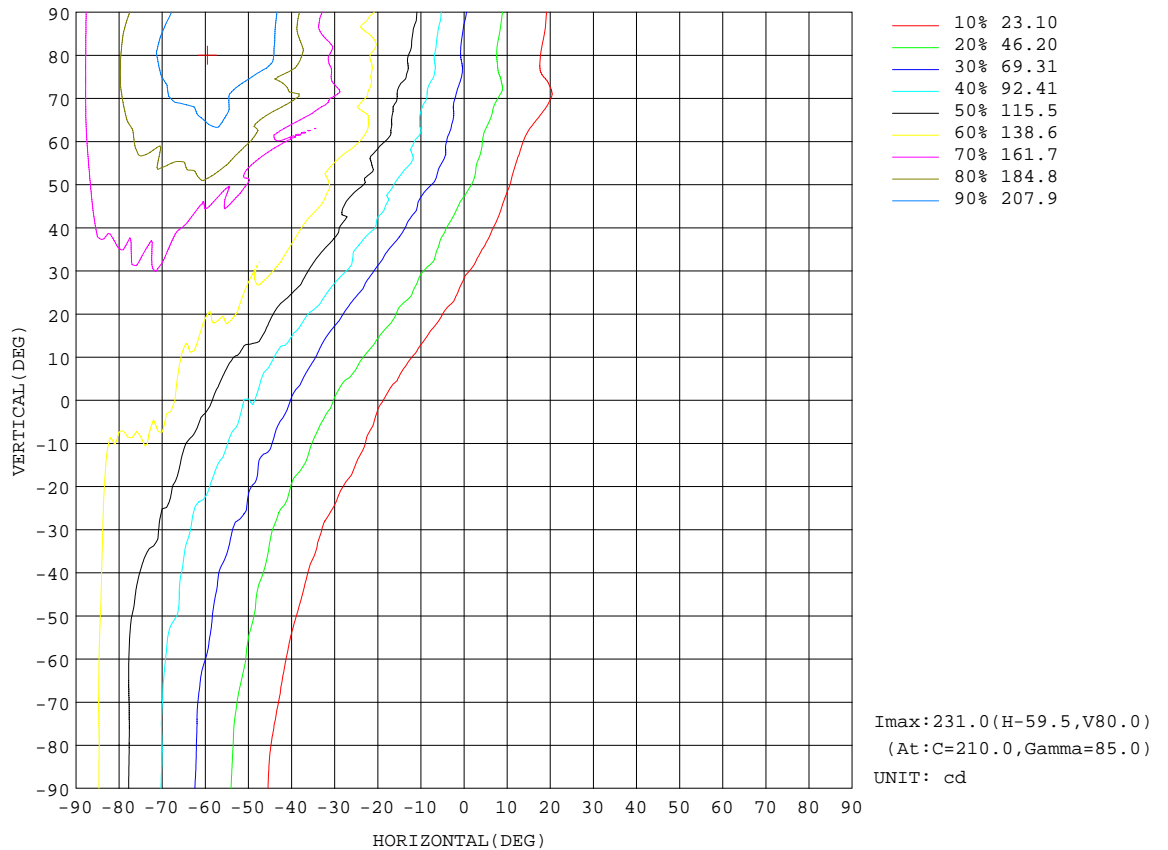
REFLECTANCE										
Ceiling	0.8	0.8	0.8	0.7	0.7	0.7	0.5	0.5	0.5	0
Walls	0.7	0.5	0.3	0.7	0.5	0.3	0.7	0.5	0.3	0
Working plane	0.2	0.2	0.2	0.2	0.2	0.2	0.2	0.2	0.2	0
ROOM INDEX	UTILIZATION FACTORS(PERCENT) $k(RI) \times RCR = 5$									
k = 0.60	33	20	12	31	19	12	28	17	11	3
0.80	41	26	18	39	25	17	34	22	15	6
1.00	48	33	23	45	31	22	39	29	20	8
1.25	55	40	29	51	37	28	44	32	24	11
1.50	60	45	35	56	42	33	48	37	29	13
2.00	68	54	44	63	50	41	53	43	35	17
2.50	74	60	50	68	56	47	57	48	40	20
3.00	78	66	56	72	61	52	60	52	45	23
4.00	84	73	64	77	67	60	65	57	51	27
5.00	87	78	70	80	72	65	67	61	55	30
ROOM INDEX	UF(total)									Direct
According to DIN EN 13032-2 2004			Suspended				SHRNOM = 1.25			

C Range: 0 - 360DEG
 C Interval: 15.0DEG
 Test Speed: HIGH
 Temperature:25.3DEG
 Operators:
 Test Date:2020-10-28

γ Range: 0 - 180DEG
 γ Interval: 1.0DEG
 Test System:EVERFINE GO-2000B_V1 SYSTEM V2.0.291
 Humidity:65.0%
 Test Distance:7.500m [K=1.0000]
 Remarks:

ISOCANDELA DIAGRAM

Test:U:120.0V I:0.0744A P:8.481W PF:0.9501 Lamp Flux:505.663x1 lm		
NAME:	TYPE:	WEIGHT:
SPEC.:	DIM.:	SERIAL No.:
MFR.: Access Lighting	SUR.:	PROTECTION ANGLE:

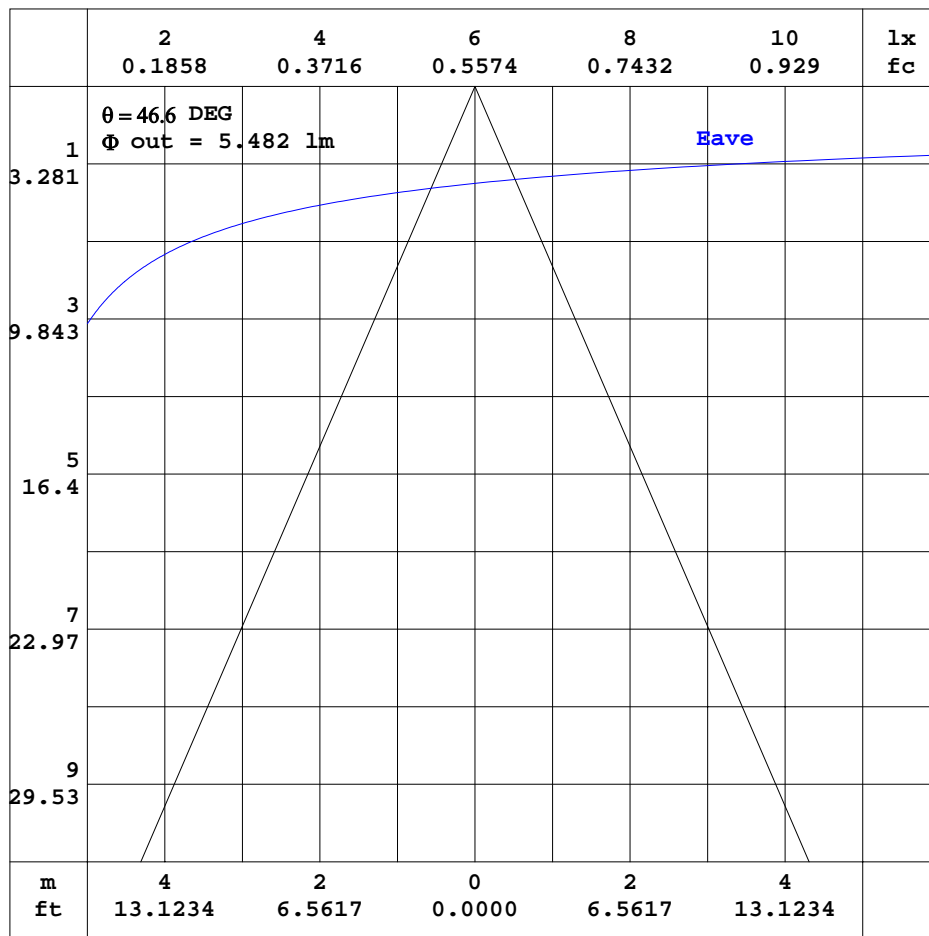


C Range: 0 - 360DEG
 C Interval: 15.0DEG
 Test Speed: HIGH
 Temperature: 25.3DEG
 Operators:
 Test Date: 2020-10-28

γ Range: 0 - 180DEG
 γ Interval: 1.0DEG
 Test System: EVERFINE GO-2000B_V1 SYSTEM V2.0.291
 Humidity: 65.0%
 Test Distance: 7.500m [K=1.0000]
 Remarks:

AAI CURVES

Test:U:120.0V I:0.0744A P:8.481W PF:0.9501 Lamp Flux:505.663x1 lm		
NAME:	TYPE:	WEIGHT:
SPEC.:	DIM.:	SERIAL No.:
MFR.: Access Lighting	SUR.:	PROTECTION ANGLE:



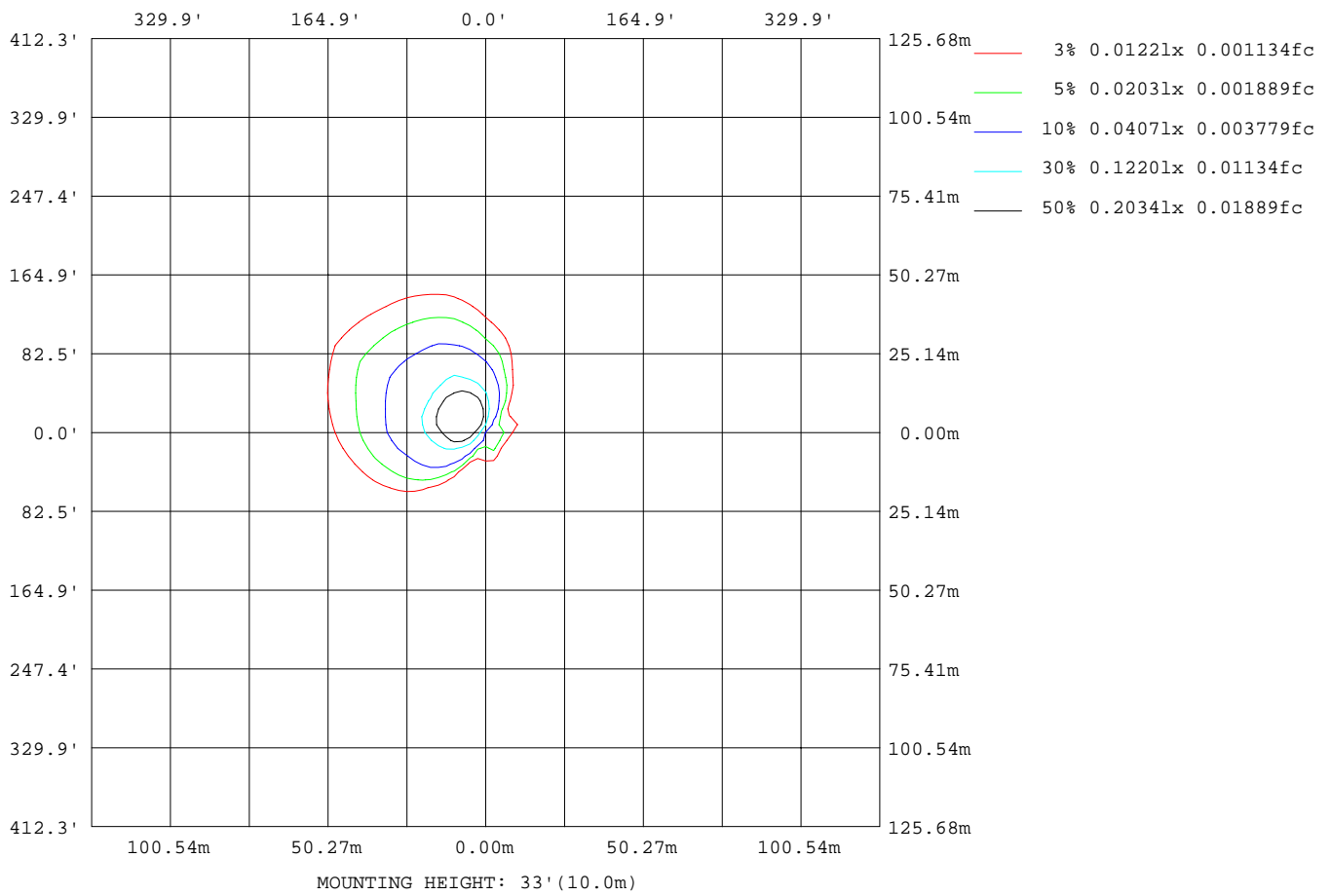
Note: The Curves indicate the illuminated area and the average illumination when the luminaire is at different distance.

C Range: 0 - 360DEG
 C Interval: 15.0DEG
 Test Speed: HIGH
 Temperature: 25.3DEG
 Operators:
 Test Date: 2020-10-28

γ Range: 0 - 180DEG
 γ Interval: 1.0DEG
 Test System: EVERFINE GO-2000B_V1 SYSTEM V2.0.291
 Humidity: 65.0%
 Test Distance: 7.500m [K=1.0000]
 Remarks:

ISOLUX DIAGRAM

Test:U:120.0V I:0.0744A P:8.481W PF:0.9501 Lamp Flux:505.663x1 lm		
NAME:	TYPE:	WEIGHT:
SPEC.:	DIM.:	SERIAL No.:
MFR.: Access Lighting	SUR.:	PROTECTION ANGLE:



C Range: 0 - 360DEG
 C Interval: 15.0DEG
 Test Speed: HIGH
 Temperature: 25.3DEG
 Operators:
 Test Date: 2020-10-28

γ Range: 0 - 180DEG
 γ Interval: 1.0DEG
 Test System: EVERFINE GO-2000B_V1 SYSTEM V2.0.291
 Humidity: 65.0%
 Test Distance: 7.500m [K=1.0000]
 Remarks:

LED Avg.L Report

Test:U:120.0V I:0.0744A P:8.481W PF:0.9501 Lamp Flux:505.663x1 lm		
NAME:	TYPE:	WEIGHT:
SPEC.:	DIM.:	SERIAL No.:
MFR.: Access Lighting	SUR.:	PROTECTION ANGLE:

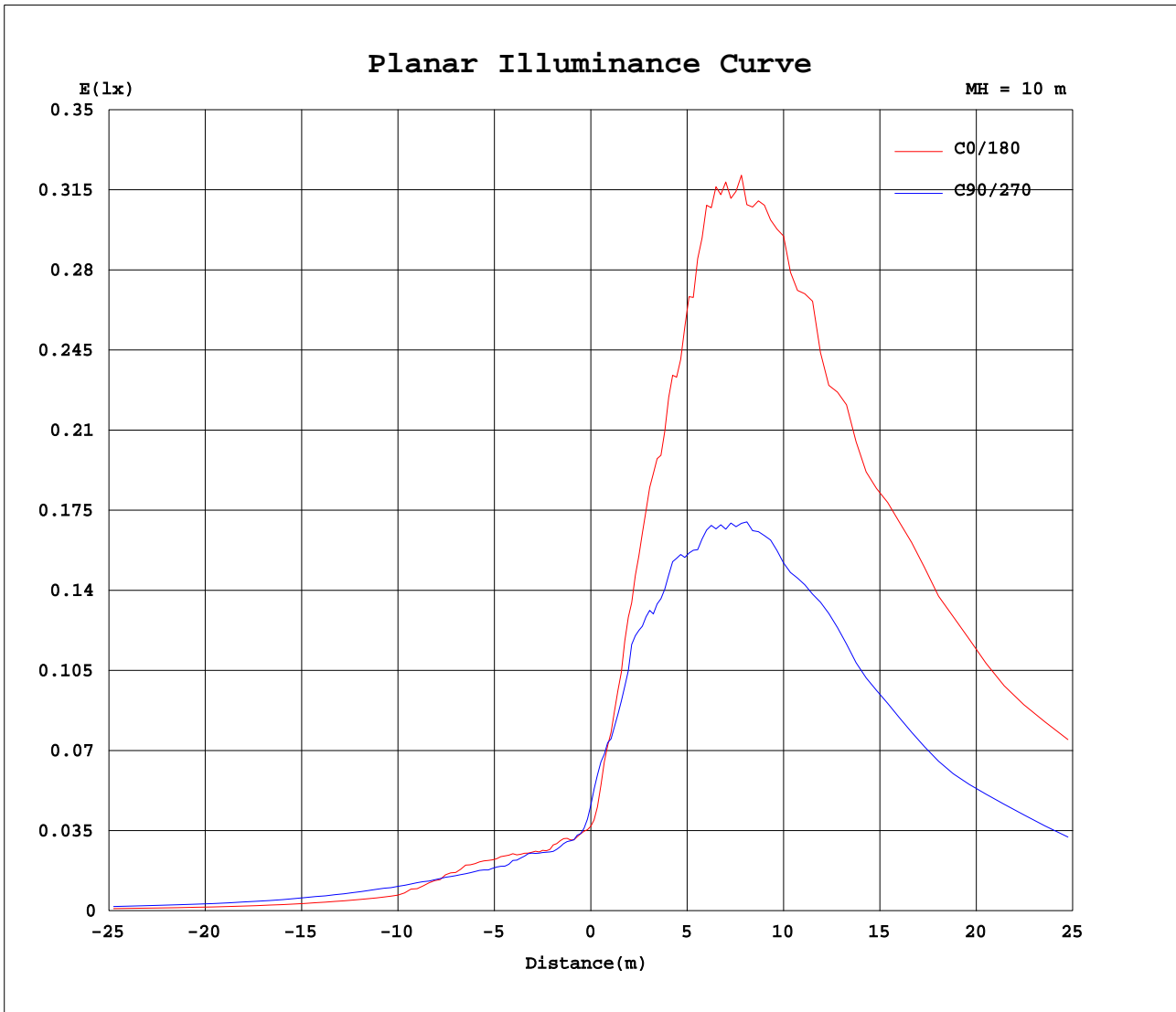
AvgL	cd/m2
L_0~180(65)av	1563
L_0~180(75)av	2844
L_0~180(85)av	8660
L_90~270(65)av	772
L_90~270(75)av	1370
L_90~270(85)av	4111
L_45(65)av	1041
L_45(75)av	2206
L_45(85)av	6859

Standard: GB/T 29293-2012

C Range: 0 - 360DEG
 C Interval: 15.0DEG
 Test Speed: HIGH
 Temperature:25.3DEG
 Operators:
 Test Date:2020-10-28

γ Range: 0 - 180DEG
 γ Interval: 1.0DEG
 Test System:EVERFINE GO-2000B_V1 SYSTEM V2.0.291
 Humidity:65.0%
 Test Distance:7.500m [K=1.0000]
 Remarks:

Planar Illuminance Curve



C Range: 0 - 360DEG
 C Interval: 15.0DEG
 Test Speed: HIGH
 Temperature: 25.3DEG
 Operators:
 Test Date: 2020-10-28

γ Range: 0 - 180DEG
 γ Interval: 1.0DEG
 Test System: EVERFINE GO-2000B_V1 SYSTEM V2.0.291
 Humidity: 65.0%
 Test Distance: 7.500m [K=1.0000]
 Remarks:

LUMINOUS DISTRIBUTION INTENSITY DATA

Test:U:120.0V I:0.0744A P:8.481W PF:0.9501 Lamp Flux:505.663x1 lm		
NAME:	TYPE:	WEIGHT:
SPEC.:	DIM.:	SERIAL No.:
MFR.: Access Lighting	SUR.:	PROTECTION ANGLE:

Table--1

UNIT: cd

C(DEG) γ (DEG)	0	15	30	45	60	75	90	105	120	135	150	165	180	195	210	225	240	255	270
0	3.70	3.86	3.87	4.05	4.14	4.53	4.63	4.80	4.63	4.40	4.25	3.97	3.70	3.86	3.87	4.05	4.14	4.53	4.63
5	3.14	3.15	3.14	3.12	3.13	3.17	3.14	3.44	4.28	5.65	6.72	7.38	7.30	8.08	8.37	8.81	8.48	8.08	7.43
10	3.07	3.07	3.10	3.15	3.18	2.94	2.82	3.07	4.15	6.68	9.33	11.6	12.4	14.2	15.2	15.7	14.4	13.3	10.3
15	2.85	3.02	3.03	3.07	2.93	2.91	2.80	2.91	4.04	7.77	12.4	16.2	18.3	21.4	22.5	22.6	20.7	17.2	13.8
20	2.98	3.19	3.17	3.20	3.03	2.74	2.78	2.69	3.81	9.37	15.3	21.4	24.0	30.0	32.4	32.5	29.1	22.8	16.4
25	3.18	3.23	3.18	3.30	3.10	2.88	2.61	2.71	3.60	10.5	19.3	27.2	32.4	42.7	48.5	48.5	41.1	30.6	20.9
30	3.29	2.98	2.76	2.82	3.57	3.05	2.72	2.76	3.26	12.0	23.2	33.1	45.3	56.0	58.2	60.1	54.0	40.4	25.0
35	3.05	2.53	2.06	2.27	2.80	3.35	2.80	2.82	3.10	12.8	25.9	42.2	57.9	66.9	73.2	71.0	60.3	51.5	30.3
40	2.73	1.93	1.98	2.05	2.12	3.39	2.89	2.77	3.12	13.6	29.8	52.5	68.4	83.1	94.7	95.0	75.9	58.4	36.9
45	1.95	1.95	2.00	2.09	2.03	3.10	3.03	2.60	3.11	15.2	33.6	61.0	83.4	97.0	114	106	93.3	68.0	43.0
50	1.89	1.96	2.02	2.12	2.08	2.63	3.18	2.52	3.05	16.8	38.2	68.9	91.8	123	134	125	103	77.3	50.8
55	1.86	1.98	2.07	2.17	2.10	2.06	3.31	2.59	2.96	18.5	45.4	80.0	102	137	139	148	118	89.8	54.0
60	1.83	2.03	2.13	2.23	2.14	2.06	3.33	2.65	2.89	20.2	49.6	81.8	120	146	149	152	129	95.8	57.3
65	1.83	2.10	2.21	2.30	2.20	2.11	3.52	2.60	2.87	21.3	55.1	83.9	130	149	153	149	158	102	61.7
70	1.83	2.16	2.35	2.39	2.25	2.17	3.74	2.57	2.93	22.7	57.6	93.4	148	150	174	159	147	111	62.0
75	1.83	2.25	2.64	2.53	2.30	2.21	3.70	2.53	3.04	23.4	59.9	102	145	172	203	200	160	119	67.2
80	1.84	2.33	3.59	2.68	2.33	2.23	3.72	2.48	3.08	23.0	60.5	101	142	179	219	200	156	122	66.3
85	1.84	2.32	3.85	2.89	2.38	2.23	3.70	2.48	3.07	22.2	62.5	104	149	199	231	211	152	128	68.0
90	1.84	2.28	4.16	2.96	2.38	2.23	3.36	2.49	3.03	21.9	62.2	106	156	190	227	215	149	132	70.9
95	1.84	2.20	3.54	2.69	2.38	2.23	3.18	2.43	3.07	22.0	60.8	108	156	199	225	213	149	128	71.7
100	1.80	2.11	2.58	2.52	2.35	2.20	3.14	2.38	3.15	21.8	59.5	103	154	185	228	208	145	124	68.8
105	1.74	2.01	2.26	2.33	2.25	2.09	3.13	2.38	3.36	21.9	62.0	104	148	183	209	180	153	117	64.8
110	1.69	1.94	2.14	2.21	2.20	2.05	3.14	2.51	3.43	21.8	59.0	97.1	148	168	189	186	149	113	62.8
115	1.65	1.85	2.05	2.13	2.10	2.08	3.28	2.53	3.54	20.9	56.0	91.2	144	151	172	161	146	103	60.4
120	1.59	1.76	1.96	2.03	2.00	1.91	1.68	2.47	3.62	20.1	53.4	85.6	124	154	152	136	143	98.4	55.2
125	1.62	1.71	1.91	1.94	1.93	3.01	1.56	2.56	3.60	18.4	45.7	81.9	112	150	148	138	120	90.7	54.4
130	1.55	1.67	1.85	1.86	1.86	3.48	1.57	2.51	3.53	17.2	39.0	70.7	102	128	147	132	111	81.4	51.7
135	1.64	1.63	1.78	1.79	2.09	2.18	1.47	2.45	3.47	16.5	36.6	64.8	91.5	115	121	113	92.1	70.8	42.5
140	1.61	1.81	1.73	1.76	1.72	1.54	1.43	2.46	3.50	12.4	31.9	54.3	84.6	94.3	97.8	93.4	52.4	58.4	36.0
145	1.43	1.59	1.71	2.21	2.28	1.47	1.36	2.50	3.54	6.14	27.5	45.9	72.2	85.0	87.3	75.5	18.9	40.5	31.7
150	1.43	2.79	1.69	1.65	1.62	1.41	1.32	2.51	3.34	3.54	15.7	33.4	58.1	66.3	68.9	12.3	5.86	9.56	12.2
155	1.74	1.88	1.68	1.64	1.58	1.41	1.31	2.57	3.35	3.37	7.97	14.0	15.1	28.3	11.8	28.5	16.2	13.4	10.8
160	1.48	1.61	1.68	1.64	1.53	1.40	1.62	2.70	3.25	3.05	11.3	4.42	8.13	19.5	32.5	5.64	19.0	7.63	15.4
165	1.49	1.64	1.68	1.64	1.54	1.37	2.16	2.95	3.25	3.24	2.98	3.38	4.25	4.60	4.57	8.32	3.84	3.97	7.77
170	1.52	1.67	1.68	1.64	1.52	1.39	2.73	3.08	3.37	3.35	3.13	3.01	4.26	4.29	4.23	4.16	3.79	3.19	3.11
175	1.63	1.75	1.71	1.68	1.54	2.21	3.15	3.17	3.18	3.17	3.30	3.21	3.76	3.82	3.82	3.69	3.45	3.27	3.20
180	4.73	4.59	4.53	4.29	3.99	3.79	3.48	3.34	3.21	3.24	3.36	3.17	4.73	4.50	4.54	4.26	4.01	3.76	3.50

C Range: 0 - 360DEG
 C Interval: 15.0DEG
 Test Speed: HIGH
 Temperature:25.3DEG
 Operators:
 Test Date:2020-10-28

γ Range: 0 - 180DEG
 γ Interval: 1.0DEG
 Test System:EVERFINE GO-2000B_V1 SYSTEM V2.0.291
 Humidity:65.0%
 Test Distance:7.500m [K=1.0000]
 Remarks:

LUMINOUS DISTRIBUTION INTENSITY DATA

Test:U:120.0V I:0.0744A P:8.481W PF:0.9501 Lamp Flux:505.663x1 lm		
NAME:	TYPE:	WEIGHT:
SPEC.:	DIM.:	SERIAL No.:
MFR.: Access Lighting	SUR.:	PROTECTION ANGLE:

Table--2

UNIT: cd

C(DEG) γ (DEG)	285	300	315	330	345														
0	4.80	4.63	4.40	4.25	3.97														
5	6.49	4.84	3.38	3.08	3.20														
10	7.52	5.05	3.14	2.88	2.93														
15	9.16	5.31	2.97	2.87	2.86														
20	11.6	5.45	2.86	2.89	2.70														
25	13.1	5.64	2.92	2.58	3.00														
30	13.7	5.87	2.97	2.71	3.12														
35	15.1	5.99	3.02	2.89	3.36														
40	16.6	6.07	3.08	3.07	3.58														
45	18.6	6.29	3.01	3.21	3.76														
50	20.3	7.04	3.02	3.30	3.83														
55	21.9	8.15	3.05	3.59	3.69														
60	23.6	8.85	3.01	3.86	3.20														
65	26.3	8.20	3.14	3.91	2.29														
70	33.2	7.20	3.08	3.70	2.14														
75	31.1	7.03	2.74	3.47	2.12														
80	27.1	6.94	2.69	3.39	2.12														
85	28.3	6.92	2.63	3.32	2.12														
90	29.3	6.90	2.63	3.25	2.12														
95	29.2	6.92	2.58	3.12	2.12														
100	29.3	7.07	2.53	2.98	2.12														
105	28.6	7.02	2.52	2.97	2.41														
110	27.9	6.98	2.60	3.01	2.52														
115	6.57	5.72	2.58	2.99	2.74														
120	3.47	6.14	1.93	2.92	3.01														
125	11.3	5.44	1.26	2.16	3.55														
130	20.8	3.33	2.57	1.46	1.66														
135	20.2	3.20	2.54	2.53	1.58														
140	18.0	3.28	2.53	2.45	1.51														
145	15.6	3.47	2.61	2.34	1.72														
150	6.30	3.28	2.84	1.99	2.20														
155	7.35	4.21	3.26	1.36	2.32														
160	9.74	3.28	1.40	1.43	1.32														
165	3.81	1.52	1.07	1.14	1.29														
170	3.07	1.14	0.99	1.06	1.21														
175	2.74	1.31	1.07	1.15	1.19														
180	3.32	3.25	3.24	3.38	3.16														

C Range: 0 - 360DEG
 C Interval: 15.0DEG
 Test Speed: HIGH
 Temperature:25.3DEG
 Operators:
 Test Date:2020-10-28

γ Range: 0 - 180DEG
 γ Interval: 1.0DEG
 Test System:EVERFINE GO-2000B_V1 SYSTEM V2.0.291
 Humidity:65.0%
 Test Distance:7.500m [K=1.0000]
 Remarks: